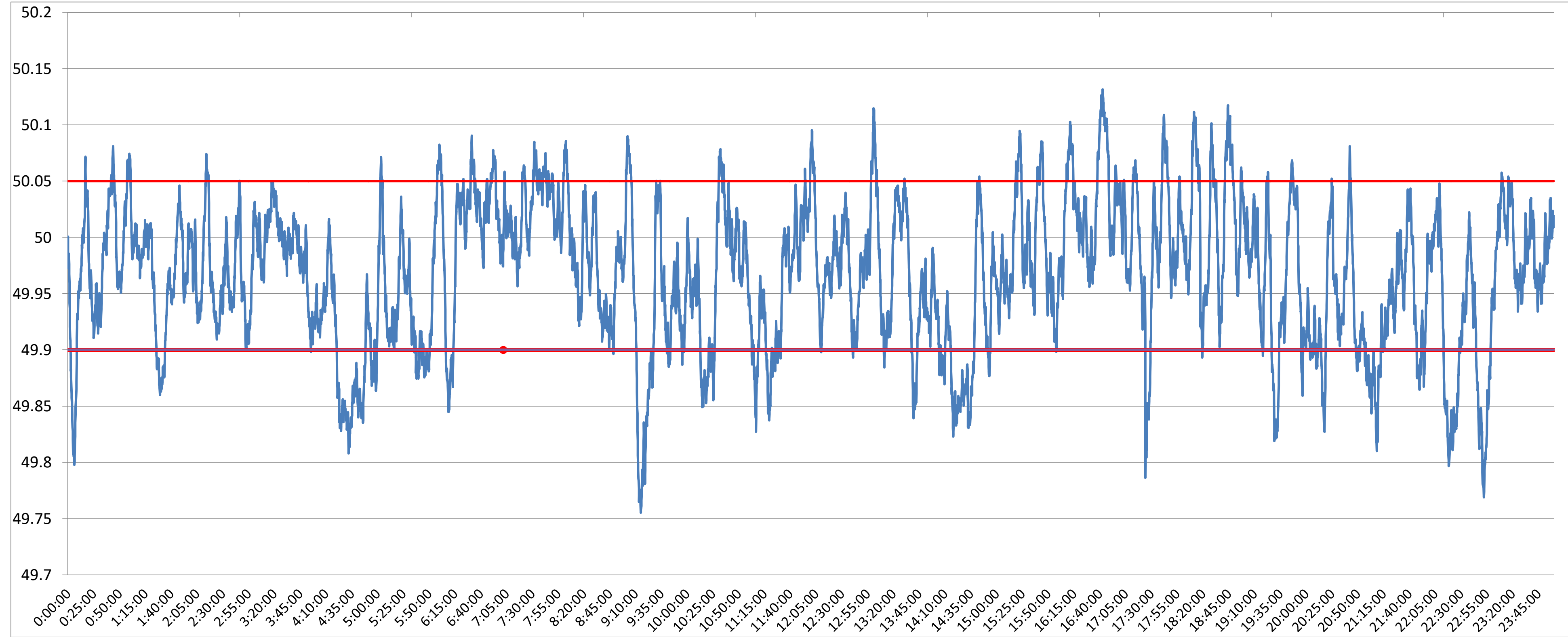




POWER SYSTEM OPERATION CORPORATION LIMITED
NATIONAL LOAD DESPATCH CENTRE NEW DELHI

RENGALI:Frequency

National Grid Frequency Profile for 23-May-17



<49.2	<49.7	<49.90	<49.97	49.7-49.8	49.8-49.9	49.9-50.0	50.0-50.1	50.1-50.2	49.90-50.05	49.7-50.2	49.97-50.03	50.05-50.1	>50	>50.03	>50.05	>50.2
0	0.00	16.04	49.47	0.67	15.37	50.52	32.63	0.81	74.90	100.00	33.04	8.30	33.34	17.49	9.06	0.00

Average Frequency		49.97	Frequency Variation Index :		0.053	Standard Deviation :		0.065
Instantaneous Frequency			15 minute average Frequency			No. of excursion above 50.03 Hz		111
Max	50.13	16:42:40	Max	50.053	7:45:00	No. of excursion below 49.97 Hz		135
Min	49.76	9:15:10	Min	49.842	23:00:00	No. of excursion above 50.00 Hz		159
Average time freq remains below 49.97 per excursion		0:05:17	Average time frequency remains above 50.03 per excursion		0:02:16	No. of excursion below 50.00 Hz		158