

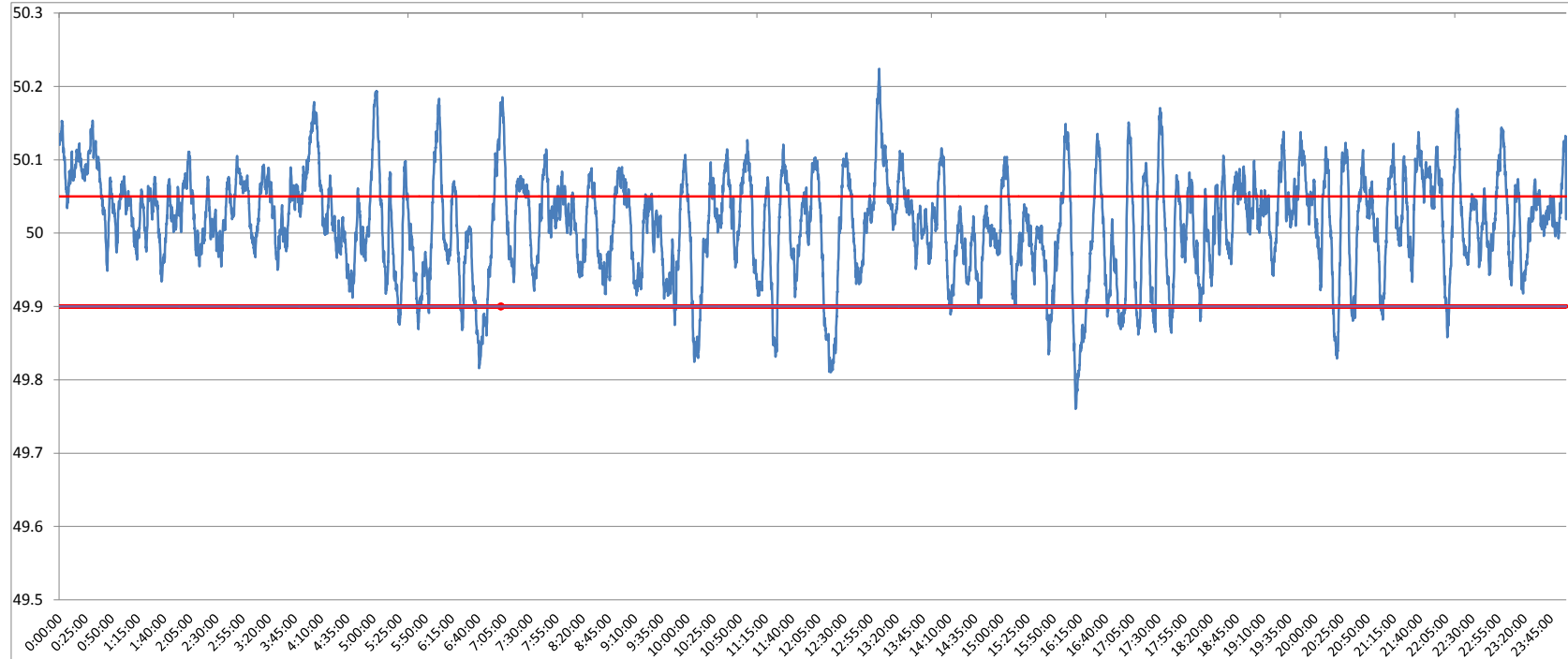


**POWER SYSTEM OPERATION CORPORATION LIMITED**  
NATIONAL LOAD DESPATCH CENTRE NEW DELHI

DURGAPUR:Frequency

National Grid Frequency Profile for

23-Nov-15



<49.2	<49.7	<49.90	<49.97	49.7-49.8	49.8-49.9	49.9-50.0	50.0-50.1	50.1-50.2	49.90-50.05	49.7-50.2	49.97-50.03	50.05-50.1	>50	>50.03	>50.05	>50.2
0	0.00	6.78	24.87	0.17	6.61	31.99	52.84	8.31	61.26	99.92	31.37	23.68	61.09	43.76	31.96	0.08

<b>Average Frequency</b>		<b>50.01</b>	<b>Frequency Variation Index :</b>		<b>0.050</b>	<b>Standard Deviation :</b>		<b>0.069</b>	
<b>Instantaneous Frequency</b>			<b>15 minute average Frequency</b>			<b>No. of excursion above 50.03 Hz</b>		<b>156</b>	
<b>Max</b>	<b>50.22</b>	<b>13:03:30</b>	<b>Max</b>	<b>50.117</b>	<b>13:15:00</b>	<b>No. of excursion below 49.97 Hz</b>		<b>110</b>	
<b>Min</b>	<b>49.76</b>	<b>16:11:10</b>	<b>Min</b>	<b>49.910</b>	<b>10:15:00</b>	<b>No. of excursion above 50.00 Hz</b>		<b>135</b>	
<b>Average time freq remains below 49.97 per excursion</b>			<b>0:03:15</b>	<b>Average time frequency remains above 50.03 per excursion</b>		<b>0:04:02</b>	<b>No. of excursion below 50.00 Hz</b>		<b>133</b>