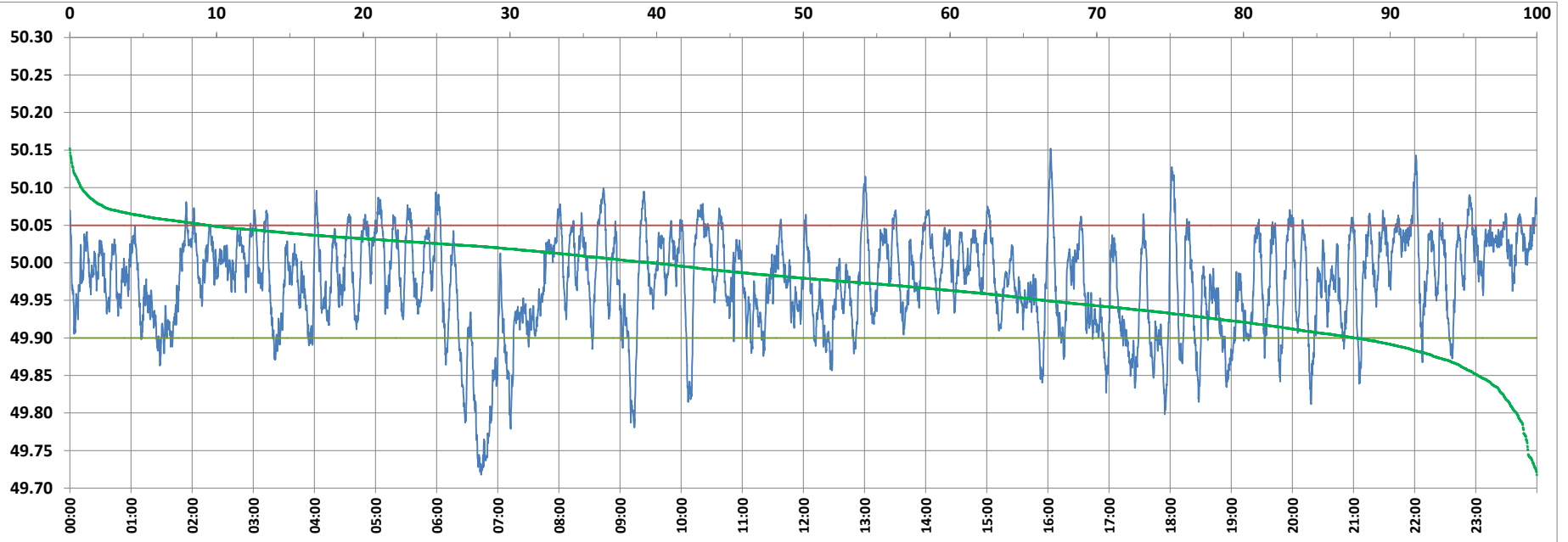


POWER SYSTEM OPERATION CORPORATION LIMITED

NATIONAL LOAD DESPATCH CENTRE, NEW DELHI



Frequency profile for 24-Feb-2022 (Thursday)



<49.7	<49.90	<49.97	49.7-49.8	49.8-49.9	49.9-50.0	50.0-50.1	50.1-50.2	49.90-50.05	49.7-50.2	49.97-50.03	50.05-50.1	>50	>50.03	>50.05	>50.2	<49.95	49.95-50.05	49.90-49.95
0.00	12.42	43.77	1.38	11.04	47.91	38.89	0.79	78.23	100.00	34.57	8.56	39.66	21.66	9.35	0.00	33.60	57.05	21.18

Average Frequency : 49.974

Frequency Variation Index : 0.0490

Standard Deviation : 0.0652

Mileage: 47.6

FDI: 21.8

Instantaneous Frequency		
Max	50.152	16:02:40
Min	49.718	6:43:40

15 minute Average Frequency		
Max	50.050	10:30:00
Min	49.795	7:00:00

No. of excursions	
above 50.03 Hz	161
below 49.97 Hz	144
above 50.00 Hz	131
below 50.00 Hz	129

Average time freq per excursion remains	
below 49.97	0:04:23
above 50.03	0:01:56

No. of hours freq outside 49.9-50.05 Hz	
	5:13:30

Source : AGRA 10 Sec. (8640 samples)