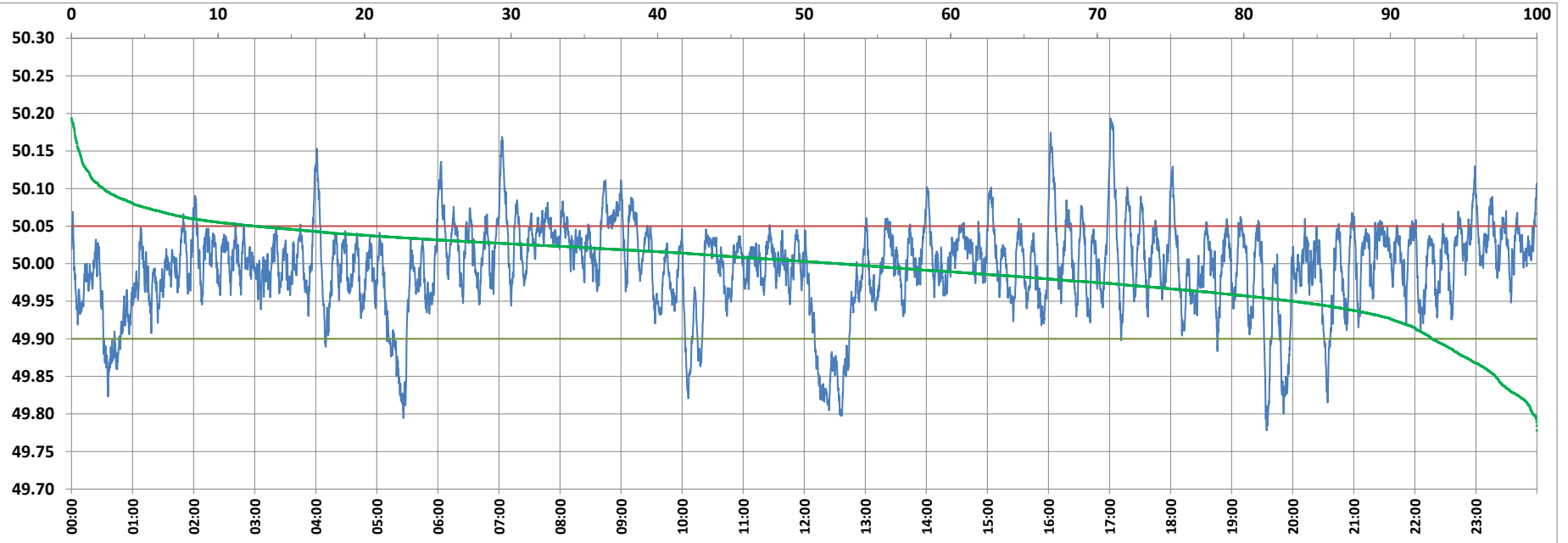


POWER SYSTEM OPERATION CORPORATION LIMITED

NATIONAL LOAD DESPATCH CENTRE, NEW DELHI



Frequency profile for 26-Jan-2022 (Wednesday)



<49.7	<49.90	<49.97	49.7-49.8	49.8-49.9	49.9-50.0	50.0-50.1	50.1-50.2	49.90-50.05	49.7-50.2	49.97-50.03	50.05-50.1	>50	>50.03	>50.05	>50.2	<49.95	49.95-50.05	49.90-49.95
0.00	7.15	26.93	0.24	6.91	40.37	50.29	2.19	80.29	100.00	46.47	10.37	52.47	26.60	12.56	0.00	16.57	70.87	9.42

Average Frequency : 49.996

Frequency Variation Index : 0.0338

Standard Deviation : 0.0581

Mileage: 47.9

FDI: 19.7

Instantaneous Frequency		
Max	50.194	17:00:50
Min	49.778	19:34:20

15 minute Average Frequency		
Max	50.068	9:00:00
Min	49.838	12:30:00

No. of excursions	
above 50.03 Hz	207
below 49.97 Hz	148
above 50.00 Hz	197
below 50.00 Hz	195

Average time freq per excursion remains	
below 49.97	0:02:37
above 50.03	0:01:51

No. of hours freq outside 49.9-50.05 Hz	
	4:43:50

Source : AGRA 10 Sec. (8640 samples)