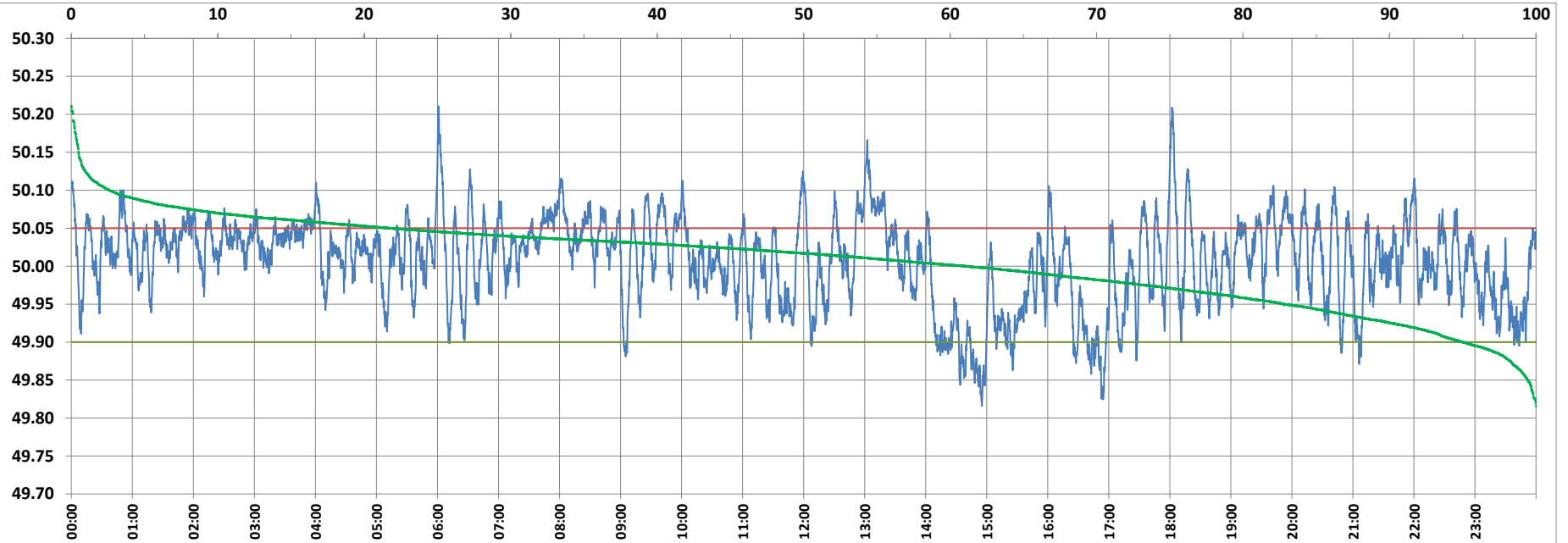


POWER SYSTEM OPERATION CORPORATION LIMITED

NATIONAL LOAD DESPATCH CENTRE, NEW DELHI



Frequency profile for 26-Feb-2022 (Saturday)



<49.7	<49.90	<49.97	49.7-49.8	49.8-49.9	49.9-50.0	50.0-50.1	50.1-50.2	49.90-50.05	49.7-50.2	49.97-50.03	50.05-50.1	>50	>50.03	>50.05	>50.2	<49.95	49.95-50.05	49.90-49.95
0.00	5.00	24.59	0.00	5.00	33.98	58.43	2.48	73.26	99.88	36.09	19.14	61.02	39.32	21.74	0.12	17.25	61.02	12.25

Average Frequency : 50.007

Frequency Variation Index : 0.0329

Standard Deviation : 0.0570

Mileage: 46.1

FDI: 26.7

Instantaneous Frequency		
Max	50.211	6:00:50
Min	49.816	14:55:10

15 minute Average Frequency		
Max	50.099	13:15:00
Min	49.859	15:00:00

No. of excursions	
above 50.03 Hz	206
below 49.97 Hz	102
above 50.00 Hz	170
below 50.00 Hz	169

Average time freq per excursion remains	
below 49.97	0:03:28
above 50.03	0:02:45

No. of hours freq outside 49.9-50.05 Hz	6:25:00
---	---------

Source : AGRA 10 Sec. (8640 samples)