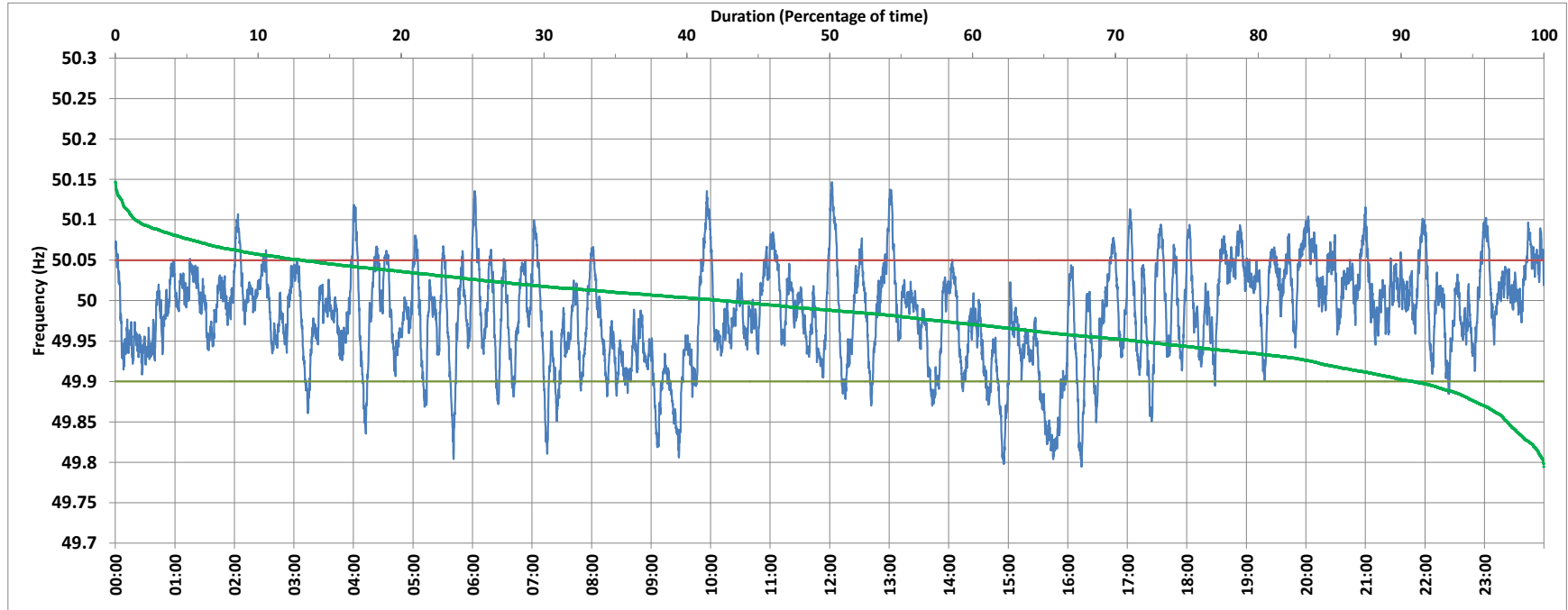


POWER SYSTEM OPERATION CORPORATION LIMITED
NATIONAL LOAD DESPATCH CENTRE NEW DELHI



NTPC-VINDHYACHAL:Frequency

National Grid Frequency Profile for 26-Dec-2017



<49.7	<49.90	<49.97	49.7-49.8	49.8-49.9	49.9-50.0	50.0-50.1	50.1-50.2	49.90-50.05	49.7-50.2	49.97-50.03	50.05-50.1	>50	>50.03	>50.05	>50.2
0.00	9.13	39.64	0.06	9.07	48.30	41.16	1.41	77.78	100.00	37.22	11.74	42.49	23.14	13.09	0.00

Average Frequency :		49.983	Frequency Variation Index :		0.040	Standard Deviation :		0.061
Instantaneous Frequency			15 minute Average Frequency			No. of excursions above 50.03 Hz		118
Max	50.147	12:02:10	Max	50.057	20:15:00	No. of excursions below 49.97 Hz		125
Min	49.794	16:13:40	Min	49.857	15:45:00	No. of excursions above 50.00 Hz		164
Average time freq remains below 49.97 per excursion		0:04:34	Average time frequency remains above 50.03 per excursion		0:02:49	No. of excursions below 50.00 Hz		162