

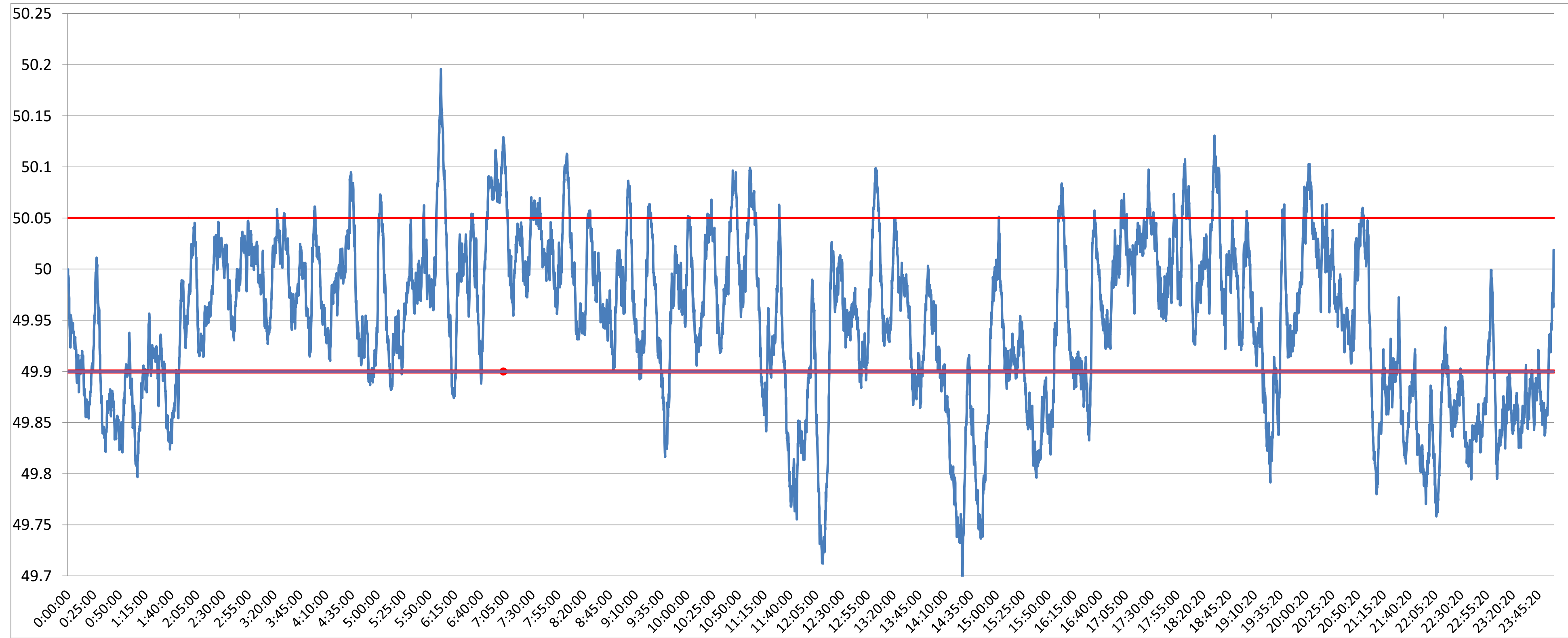


**POWER SYSTEM OPERATION CORPORATION LIMITED**  
NATIONAL LOAD DESPATCH CENTRE NEW DELHI

SLPR4:Frequency

National Grid Frequency Profile for

27-Apr-17



<49.2	<49.7	<49.90	<49.97	49.7-49.8	49.8-49.9	49.9-50.0	50.0-50.1	50.1-50.2	49.90-50.05	49.7-50.2	49.97-50.03	50.05-50.1	>50	>50.03	>50.05	>50.2
0	0.01	27.45	56.82	3.44	24.00	43.60	27.96	0.98	64.10	99.99	27.94	7.49	28.90	15.24	8.45	0.00

<b>Average Frequency</b>		<b>49.95</b>	<b>Frequency Variation Index :</b>		<b>0.089</b>	<b>Standard Deviation :</b>		<b>0.079</b>
<b>Instantaneous Frequency</b>			<b>15 minute average Frequency</b>			<b>No. of excursion above 50.03 Hz</b>		<b>95</b>
<b>Max</b>	<b>50.2</b>	<b>6:01:20</b>	<b>Max</b>	<b>50.078</b>	<b>7:00:00</b>	<b>No. of excursion below 49.97 Hz</b>		<b>108</b>
<b>Min</b>	<b>49.70</b>	<b>14:27:00</b>	<b>Min</b>	<b>49.766</b>	<b>14:30:00</b>	<b>No. of excursion above 50.00 Hz</b>		<b>127</b>
<b>Average time freq remains below 49.97 per excursion</b>		<b>0:07:35</b>	<b>Average time frequency remains above 50.03 per excursion</b>		<b>0:02:19</b>	<b>No. of excursion below 50.00 Hz</b>		<b>127</b>