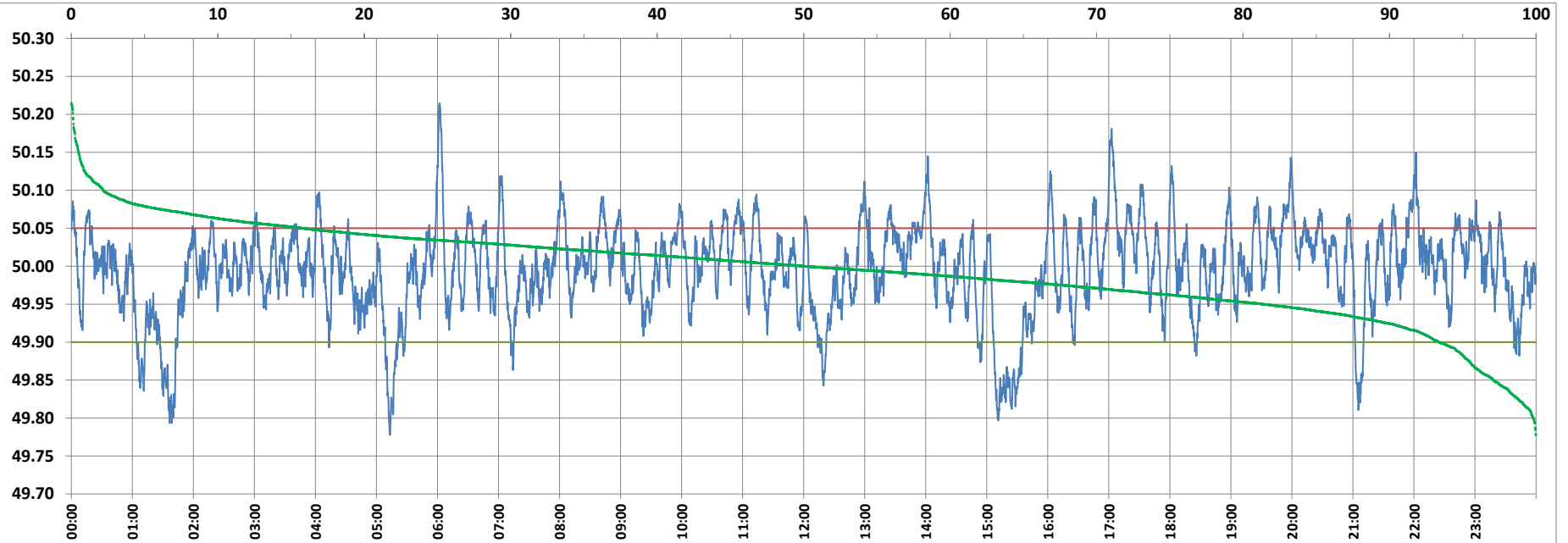


POWER SYSTEM OPERATION CORPORATION LIMITED

NATIONAL LOAD DESPATCH CENTRE, NEW DELHI



Frequency profile for 28-Jan-2022 (Friday)



<49.7	<49.90	<49.97	49.7-49.8	49.8-49.9	49.9-50.0	50.0-50.1	50.1-50.2	49.90-50.05	49.7-50.2	49.97-50.03	50.05-50.1	>50	>50.03	>50.05	>50.2	<49.95	49.95-50.05	49.90-49.95
0.00	6.62	29.41	0.19	6.44	43.37	47.82	2.07	77.64	99.88	42.22	13.55	50.01	28.37	15.74	0.12	18.69	65.57	12.07

Average Frequency : 49.995

Frequency Variation Index : 0.0356

Standard Deviation : 0.0595

Mileage: 47.2

FDI: 22.4

Instantaneous Frequency

Max	50.215	6:02:00
Min	49.778	5:13:10

15 minute Average Frequency

Max	50.079	17:15:00
Min	49.840	15:30:00

No. of excursions

above 50.03 Hz	167
below 49.97 Hz	141
above 50.00 Hz	192
below 50.00 Hz	191

Average time freq per excursion remains

below 49.97	0:03:00
above 50.03	0:02:27

No. of hours freq outside 49.9-50.05 Hz

5:22:00

Source : AGRA 10 Sec. (8640 samples)