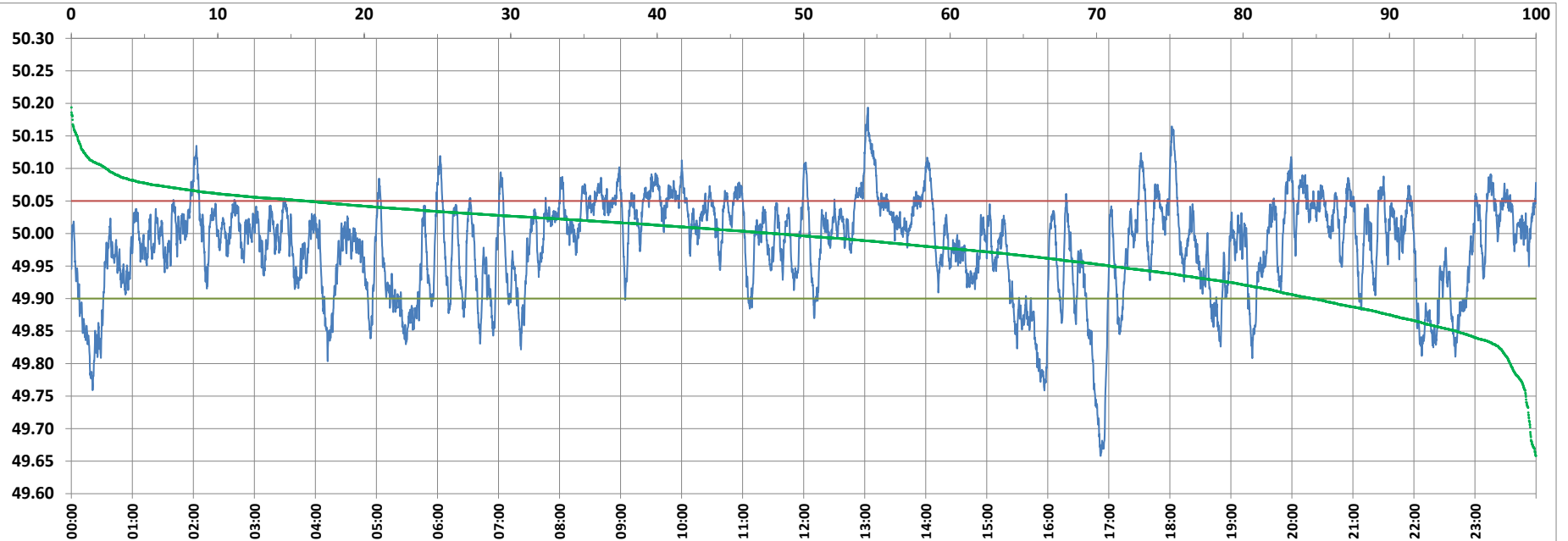


POWER SYSTEM OPERATION CORPORATION LIMITED

NATIONAL LOAD DESPATCH CENTRE, NEW DELHI



Frequency profile for 29-Jan-2022 (Saturday)



<49.7	<49.90	<49.97	49.7-49.8	49.8-49.9	49.9-50.0	50.0-50.1	50.1-50.2	49.90-50.05	49.7-50.2	49.97-50.03	50.05-50.1	>50	>50.03	>50.05	>50.2	<49.95	49.95-50.05	49.90-49.95
0.39	15.29	36.72	1.37	13.53	36.81	45.54	2.36	68.77	99.61	35.51	13.58	47.91	27.77	15.94	0.00	29.07	54.99	13.78

Average Frequency : 49.982

Frequency Variation Index : 0.0589

Standard Deviation : 0.0745

Mileage: 47.1

FDI: 31.2

Instantaneous Frequency

Max	50.194	13:03:10
Min	49.658	16:51:50

15 minute Average Frequency

Max	50.118	13:15:00
Min	49.736	17:00:00

No. of excursions

above 50.03 Hz	148
below 49.97 Hz	118
above 50.00 Hz	148
below 50.00 Hz	148

Average time freq per excursion remains

below 49.97	0:04:29
above 50.03	0:02:42

No. of hours freq outside 49.9-50.05 Hz

7:29:40

Source : AGRA 10 Sec. (8640 samples)