

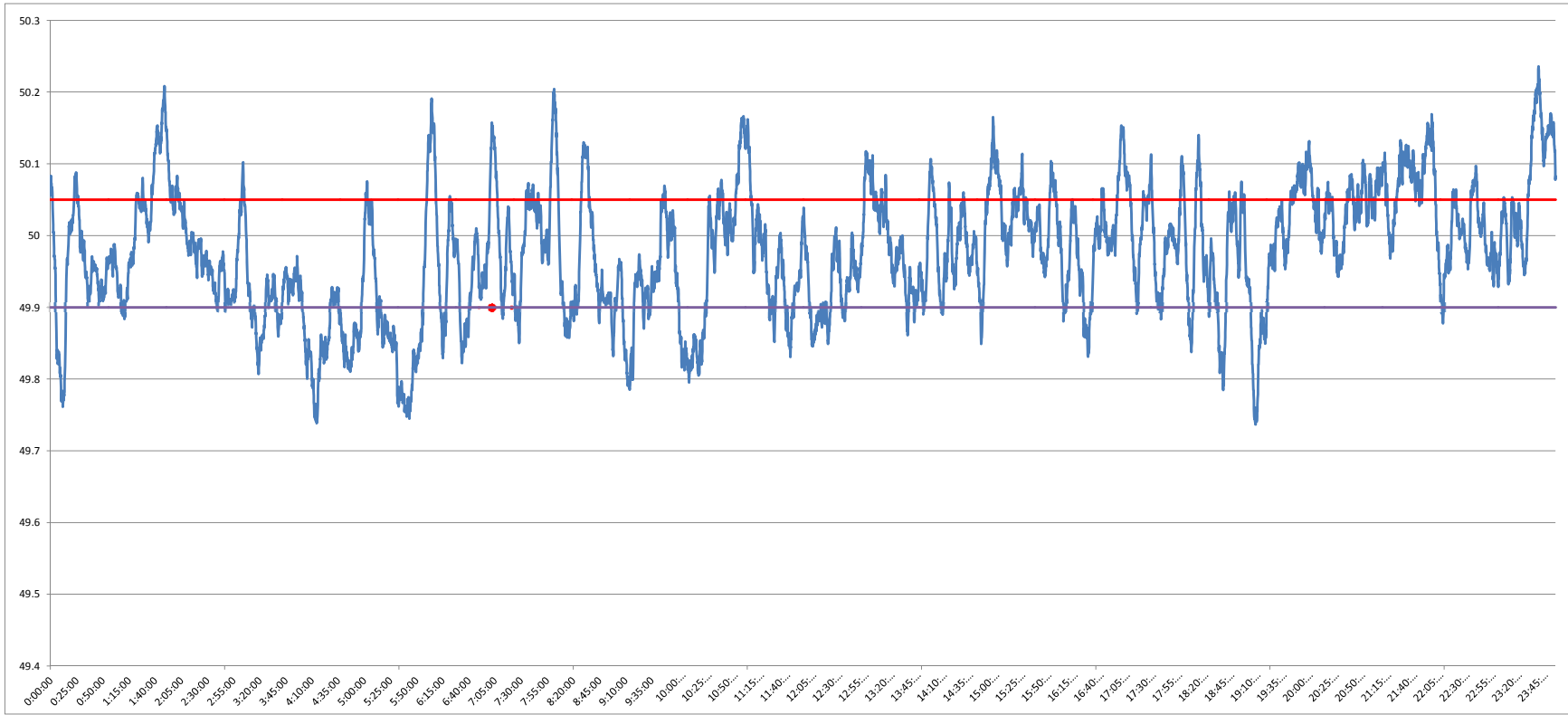


**POWER SYSTEM OPERATION CORPORATION LIMITED**  
NATIONAL LOAD DESPATCH CENTRE NEW DELHI

NTPC-VINDHYACHAL:Frequency

National Grid Frequency Profile for

30-Aug-14



<49.2	<49.7	49.7-49.8	49.8-49.9	49.9-50.0	50.0-50.1	50.1-50.2	>50.2	<49.90	49.90-50.05	>50.05	50.05-50.1	49.7-50.2	49.97-50.03
0	0.00	2.33	17.47	40.07	32.25	7.63	0.27	19.79	59.53	20.68	12.81	99.73	23.60

<b>Average Frequency</b>	<b>49.98</b>	<b>Frequency Variation Index :</b>	<b>0.084</b>	<b>Standard Deviation :</b>	<b>0.088</b>
--------------------------	--------------	------------------------------------	--------------	-----------------------------	--------------

Instantaneous Frequency			15 minute average Frequency		
MAX	50.24	23:43:30	Max	50.140	0:00:00
Min	49.74	19:12:50	Min	49.777	5:45:00

