

# पावर सिस्टम ऑपरेशन कॉर्पोरेशन लिमिटेड

(पावरग्रिड की पूर्ण स्वामित्व प्राप्त सहायक कंपनी)

## POWER SYSTEM OPERATION CORPORATION LIMITED

(A wholly owned subsidiary of POWERGRID)



पंजीकृत एवं केन्द्रीय कार्यालय: बी-9, प्रथम तल, कुतुब इंस्टीट्यूशनल एरिया, कटवारिया सराय, नई दिल्ली-110 016  
Registered & Corporate Office : B - 9, 1st Floor, Qutub Institutional Area, Katwaria Sarai, New Delhi - 110 016  
Website : www.posoco.in, www.nldc.in, Tel: 011-26536832, 26524522, Fax: 011-26524525, 26536901

संदर्भ संख्या:-POSOCO/NLDC/GM/

दिनांक: 23.05.2014

सेवा में,

वितरण सूची के अनुसार

विषय:- निष्पादन रिपोर्ट - अप्रैल 2014

महोदय,

आई०ई०जी०सी०-2010 के प्रावधान के अनुसार, - अप्रैल 2014 माह की अखिल  
भारतीय प्रणाली की निष्पादन रिपोर्ट

धन्यवाद

भवदीय

एस. आर. नरसिंहन

(एस. आर. नरसिंहन)

अपर महाप्रबंधक

(रा०भा०प्रे०के०)

संलग्नक: मासिक प्रणाली रिपोर्ट

## वितरण सूची

### Distribution List

1. सचिव, के.वि.नि.आ. तीसरा एवं चौथा तल, चंद्रलोक भवन, 36, जनपथ, नई दिल्ली - 110001  
Secretary, CERC, 3<sup>rd</sup> & 4<sup>th</sup> Floor, Chanderlok Building, 36, Janpath, New Delhi-110001
2. मुख्य अभियंता, (जी एम), के. वि. प्रा., सेवा भवन, आर. के. पुरम, नई दिल्ली - 110066  
Chief Engineer (GM), CEA, Sewa Bhavan, R.K.Puram, New Delhi-110066
3. सदस्य सचिव, ऊ. क्षे. वि. स., 18/ ए, शहीद जीत सिंह सनसनवाल मार्ग, नई दिल्ली - 110016  
Member Secretary, NRPC, 18/A, SJSS Marg, Katwaria Sarai, New Delhi-110016
4. सदस्य सचिव, प. क्षे. वि. स., एफ-3, एम आई डी सी क्षेत्र, अंधेरी, मुंबई - 400093  
Member Secretary, WRPC, F-3, MIDC Area, Andheri (East), Mumbai-400093
5. सदस्य सचिव, द. क्षे. वि. स., 29, रेस कोर्स क्रॉस रोड, बंगलुरु - 560009  
Member Secretary, SRPC, 29, Race Course Cross Road, Bangalore-560009
6. सदस्य सचिव, पू. क्षे. वि. स., 14, गोल्फ क्लब रोड, कोलकाता - 700033  
Member Secretary, ERPC, 14, Golf Club Road, Kolkata-700033
7. सदस्य सचिव, ऊ. पू. क्षे. वि. स., मेघालय राज्य आवसीय वित्त सहकारी समिति लिमिटेड भवन, नॉग्रिम हिल्स, शिलॉंग - 793003  
Member Secretary, NERPC, Meghalaya State Housing Finance Cooperative Society Ltd.  
Building, Nongrim Hills, Shillong -793003
8. महाप्रबंधक, पू. क्षे. भा. प्रे. के., 14, गोल्फ क्लब रोड, कोलकाता - 700033  
General Manager, ERLDC, 14, Golf Club Road, Kolkata-700033
9. महाप्रबंधक, प. क्षे. भा. प्रे. के., एफ-3, एम आई डी सी क्षेत्र, अंधेरी, मुंबई - 400093  
General Manager, WRLDC, F-3, MIDC Area, Andheri (East), Mumbai-400093
10. महाप्रबंधक, ऊ. क्षे. भा. प्रे. के., 18/ ए, शहीद जीत सिंह सनसनवाल मार्ग, नई दिल्ली - 110016  
General Manager, NRLDC, 18/A, SJSS Marg, Katwaria Sarai, New Delhi-110016
11. कार्यपालक निदेशक, द. क्षे. भा. प्रे. के., 29, रेस कोर्स क्रॉस रोड, बंगलुरु - 560009  
Executive Director, SRLDC, 29, Race Course Cross Road, Bangalore-560009
12. महाप्रबंधक, ऊ. पू. क्षे. भा. प्रे. के., डोंगतिह, लोअर नॉग्रह, लापलंग, शिलॉंग - 793006  
General Manager, NERLDC, Dongtiah, Lower Nongrah, Laplang, Shillong-793006



# POWER SYSTEM OPERATION CORPORATION LIMITED

(A wholly owned subsidiary of POWERGRID)

पावर सिस्टम ऑपरेशन कारपोरेशन लिमिटेड

NATIONAL LOAD DESPATCH CENTRE –राष्ट्रीय भार प्रेषण केन्द्र

मासिक ऑपरेशन रिपोर्ट

Monthly  
Operation Report



अप्रैल 2014

पावर सिस्टम ऑपरेशन कॉर्पोरेशन लिमिटेड  
राष्ट्रीय भार प्रेषण केंद्र, नई दिल्ली

POWER SYSTEM OPERATION CORPORATION LTD  
NATIONAL LOAD DESPATCH CENTRE, NEW DELHI



माह अप्रैल 2014 के लिए प्रचालन निष्पादन रिपोर्ट  
OPERATIONAL PERFORMANCE REPORT FOR THE  
MONTH OF APRIL 2014

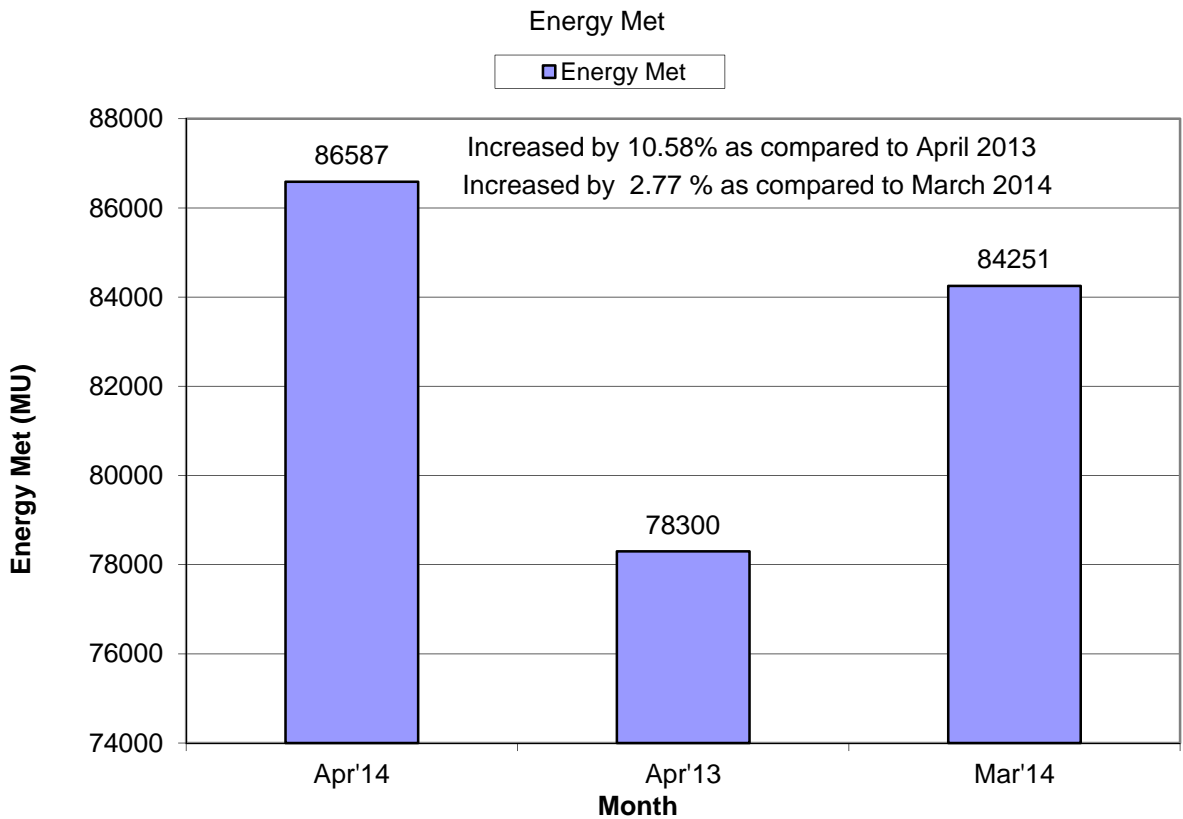
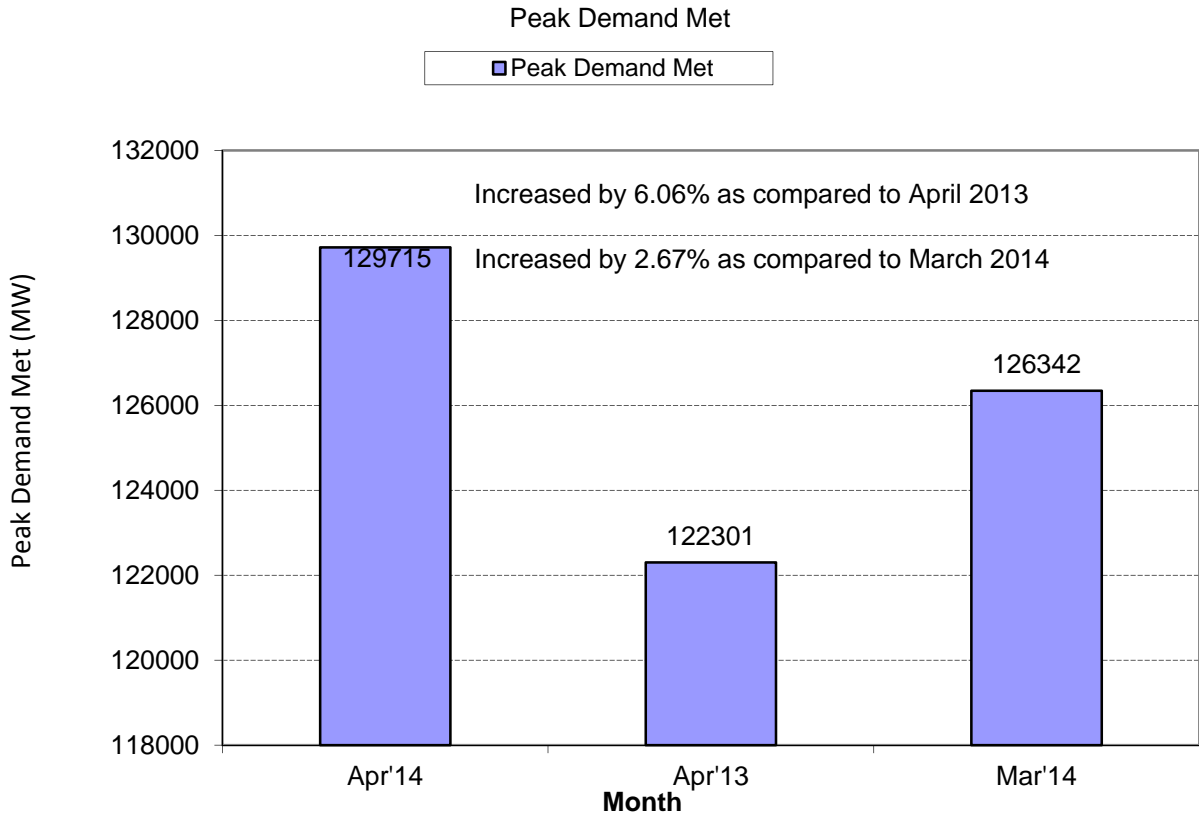
## पृष्ठसूची CONTENTS

1. माह अप्रैल 2014 की सारांश रिपोर्ट SUMMARY OF REPORT FOR THE MONTH OF APR' 2014	1-4
2. क्षेत्रवार स्थापित विद्युत क्षमता REGION WISE INSTALLED CAPACITY	5
3. राष्ट्रीय स्तर पर संध्यकालीन शिखर मांगपूर्ति PEAK DEMAND MET AT NATIONAL LEVEL	6-8
4. राष्ट्रीय स्तर पर विद्युत ऊर्जा खपत ENERGY CONSUMPTION AT NATIONAL LEVEL	9-10
5. फ्रिक्वेंसी रूपरेखा FREQUENCY PROFILE	11-13
6. राष्ट्रीय स्तर पर जल विद्युत ऊर्जा उत्पादन HYDRO GENERATION AT NATIONAL LEVEL	14-15
7. राष्ट्रीय स्तर पर पन विद्युत ऊर्जा उत्पादन WIND GENERATION AT NATIONAL LEVEL	16
8. ऊर्जा आपूर्ति की वास्तविक स्थिति ACTUAL POWER SUPPLY POSITION	17
9. शिखर मांग आवश्यकता एवं आपूर्ति की पिछले वर्ष के मार्च माह से तुलना ENERGY REQUIREMENT & MET COMPARISON WITH APR'2013	18
10. ऊर्जा आवश्यकता एवं आपूर्ति की पिछले वर्ष के मार्च माह से तुलना PEAK DEMAND REQUIREMENT & MET COMPARISON WITH APR'2013	19
11. क्षेत्रीय स्तर पर शिड्यूल एवं ड्रावल SCHEDULE & DRAWAL AT REGIONAL LEVEL	20
12. अंतर क्षेत्रीय विनिमय INTER-REGIONAL EXCHANGES	21-26
13. अंतर राष्ट्रीय विद्युत विनिमय INTER-NATIONAL EXCHANGES	27
14. एसटीओए (द्विपक्षीय एवं सामूहिक) एवं यू आई का ब्यौरा BILATERAL & COLLECTIVE SHORT-TERM OPEN ACCESS & UI DETAILS	28
15. पावर मार्केट की सूचना POWER MARKET INFORMATION	29-30

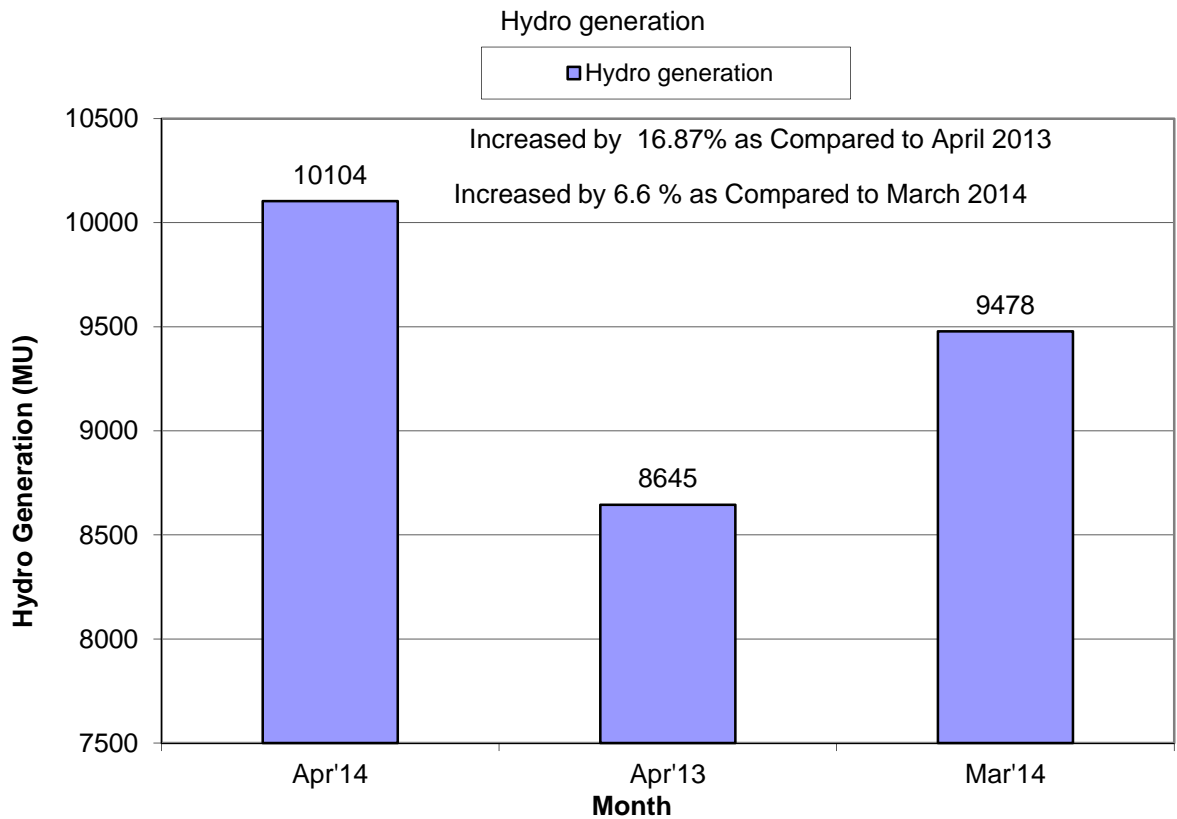
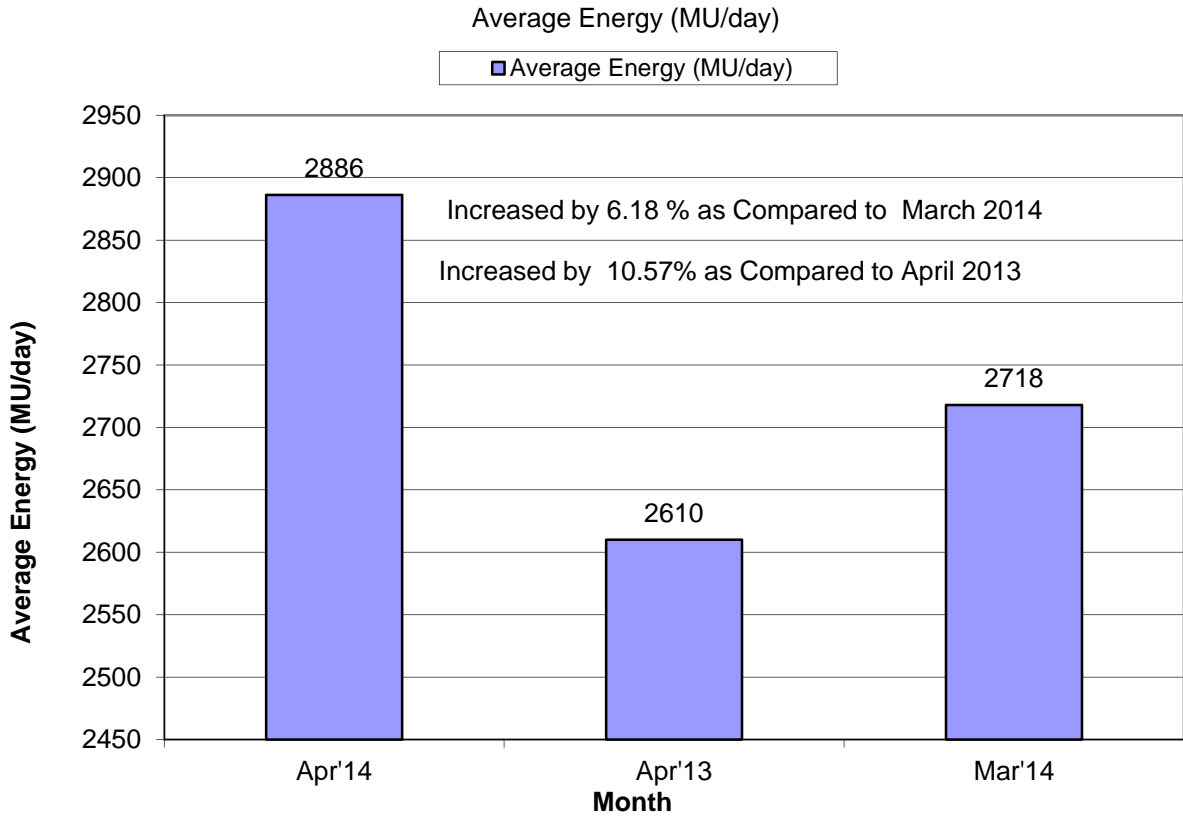
16. अक्षय ऊर्जा प्रमाण - पत्र प्रक्रिया RENEWABLE ENERGY CERTIFICATE MECHANISM	31-33
17. मुख्य घटनाये एवं डिसटर्बेनसेज IMPORTANT EVENTS/DISTURBANCES	34-36
18. नये कमीशंड पारेषण तत्व NEW ELEMENTS COMMISSIONED	37
19. विभव रूपरेखा VOLTAGE PROFILE	38



# 1. SUMMARY OF REPORT FOR THE MONTH OF APRIL 2014

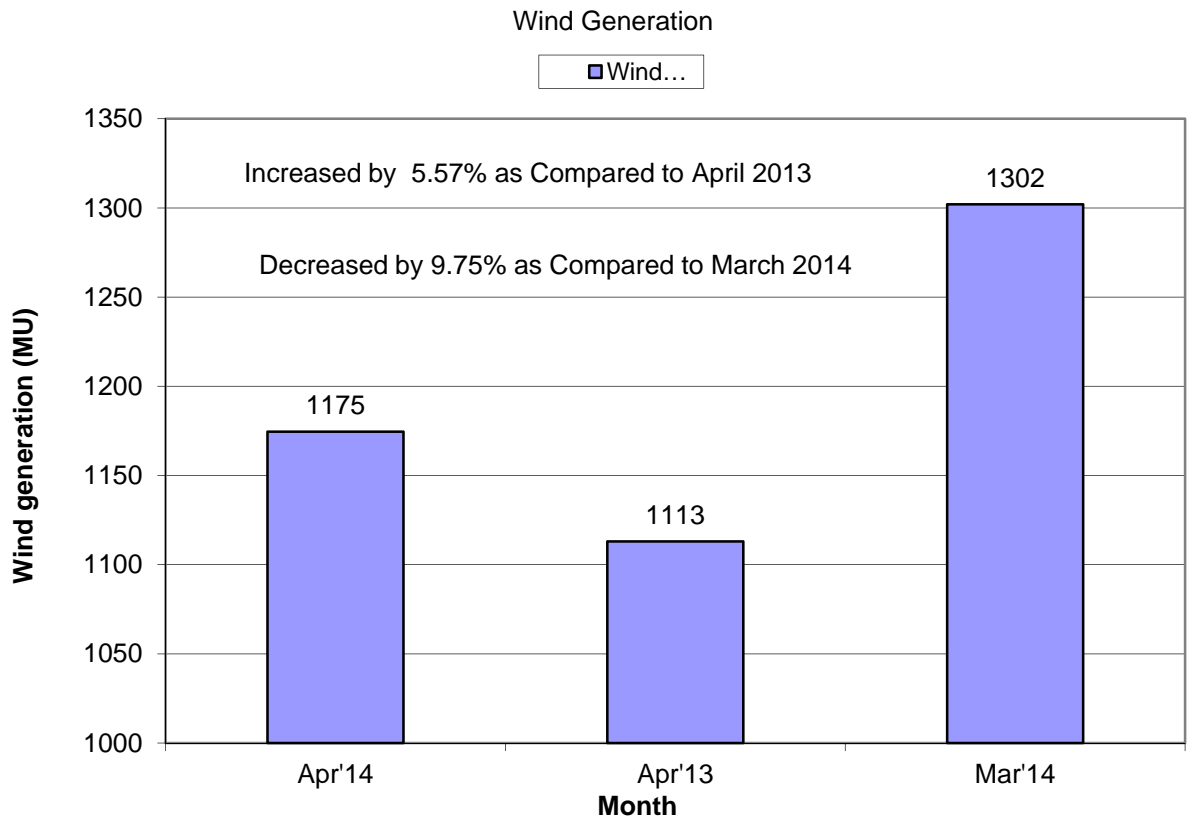
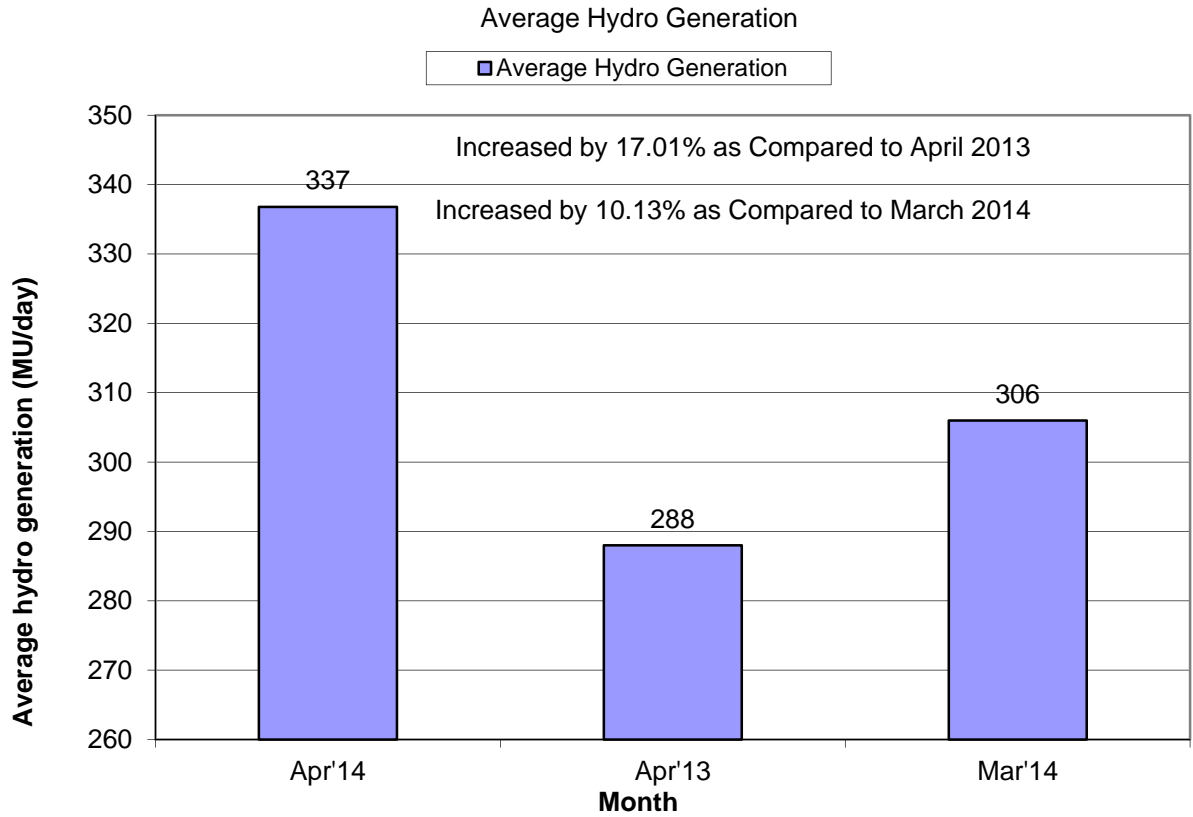


# 1. SUMMARY OF REPORT FOR THE MONTH OF APRIL 2014

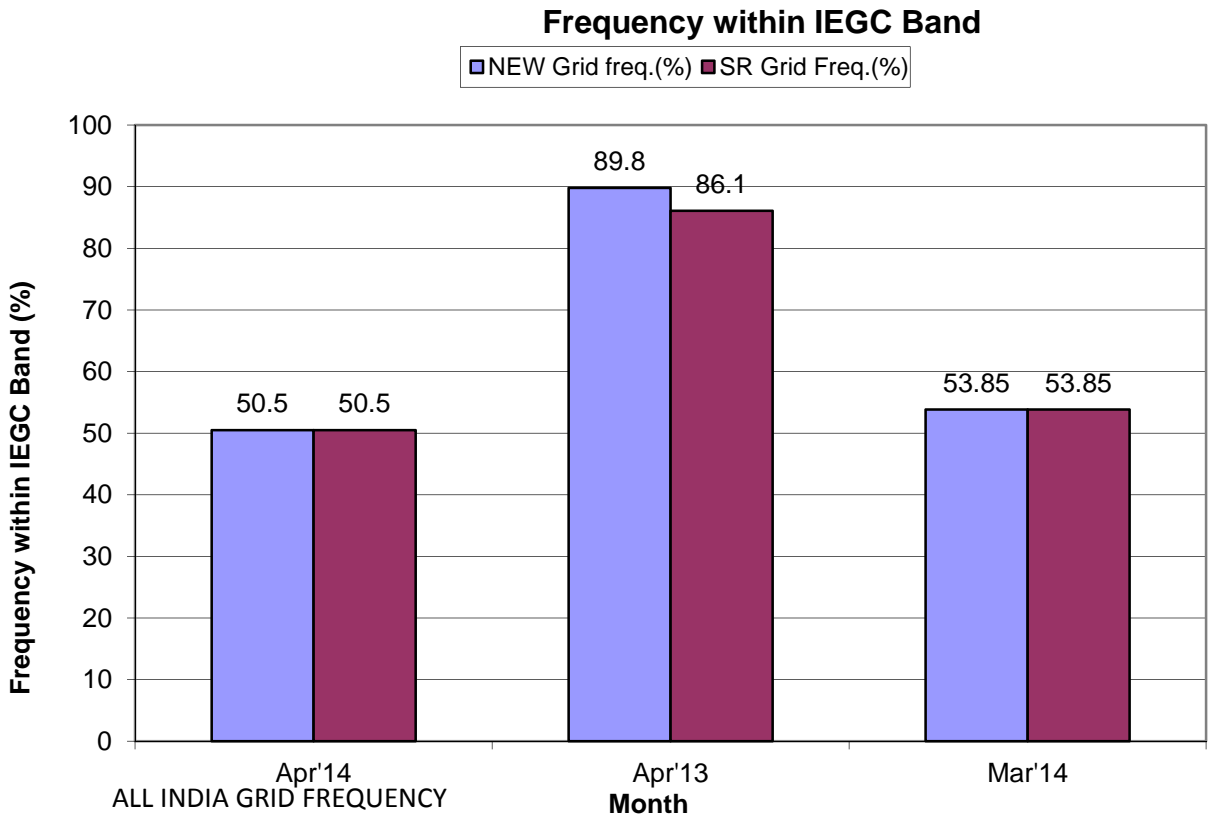
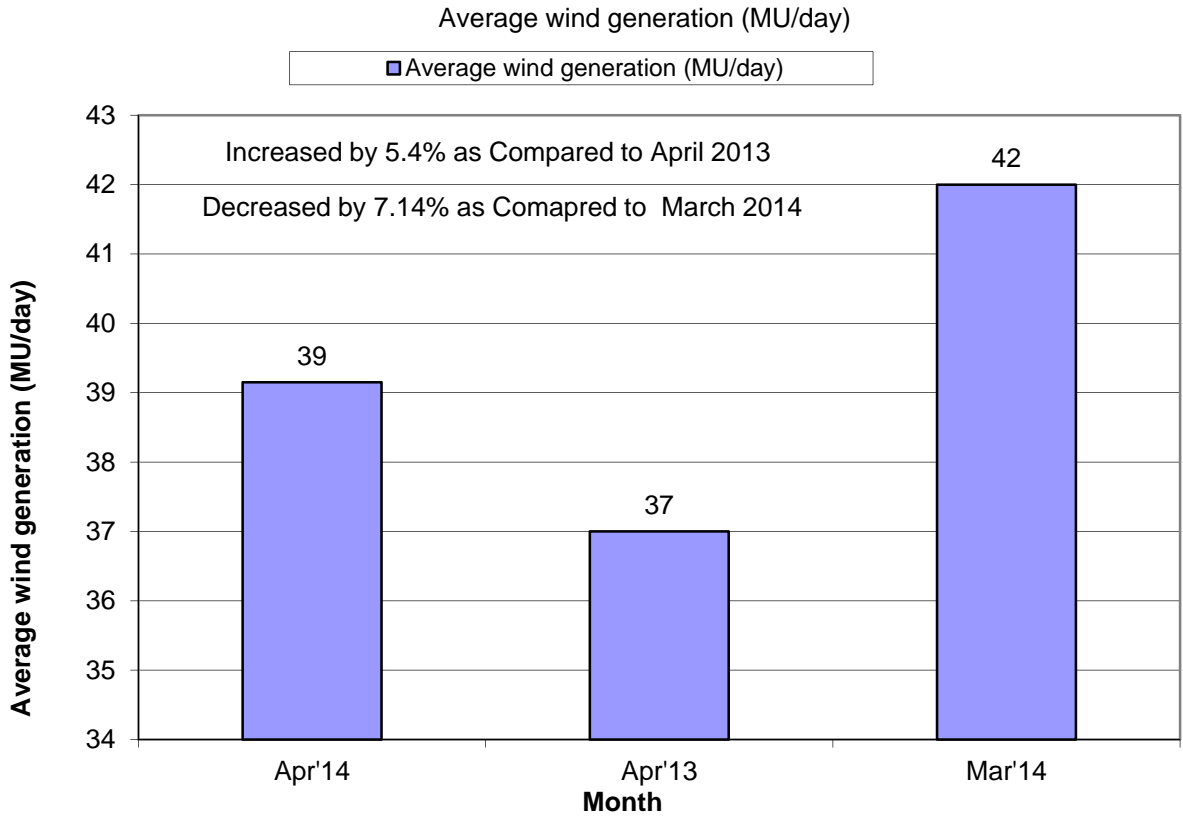




# 1. SUMMARY OF REPORT FOR THE MONTH OF APRIL 2014



# 1. SUMMARY OF REPORT FOR THE MONTH OF APRIL 2014



## 2. ALL INDIA REGIONWISE INSTALLED CAPACITY

As on 30.04.2014  
(All figures are in MW)

SL. NO.	REGION	THERMAL				NUCLEAR	HYDRO	R.E.S. @ (MNRE)	TOTAL
		COAL	GAS	DSL	TOTAL				
1	NORTHERN	35284	5281	13	40578	1620	16331	5936	64464
2	WESTERN	58155	10139	17	68311	1840	7448	11271	88870
3	SOUTHERN	26583	4963	939	32485	1320	11398	13785	58987
4	EASTERN	25328	190	17	25535	0	4113	433	30081
5	NORTH EASTERN	60	1208	143	1411	0	1242	257	2910
6	ISLANDS	0	0	70	70	0	0	11	81
<b>All India</b>		<b>145408</b>	<b>21782</b>	<b>1200</b>	<b>168390</b>	<b>4780</b>	<b>40531</b>	<b>31692</b>	<b>245394</b>

Remarks: Data taken from CEA website

**3. राष्ट्रीय स्तर पर संध्याकालीन शिखर विधुत मांग पूर्ति  
PEAK DEMAND MET AT NATIONAL LEVEL**

माह:- अप्रैल 2014

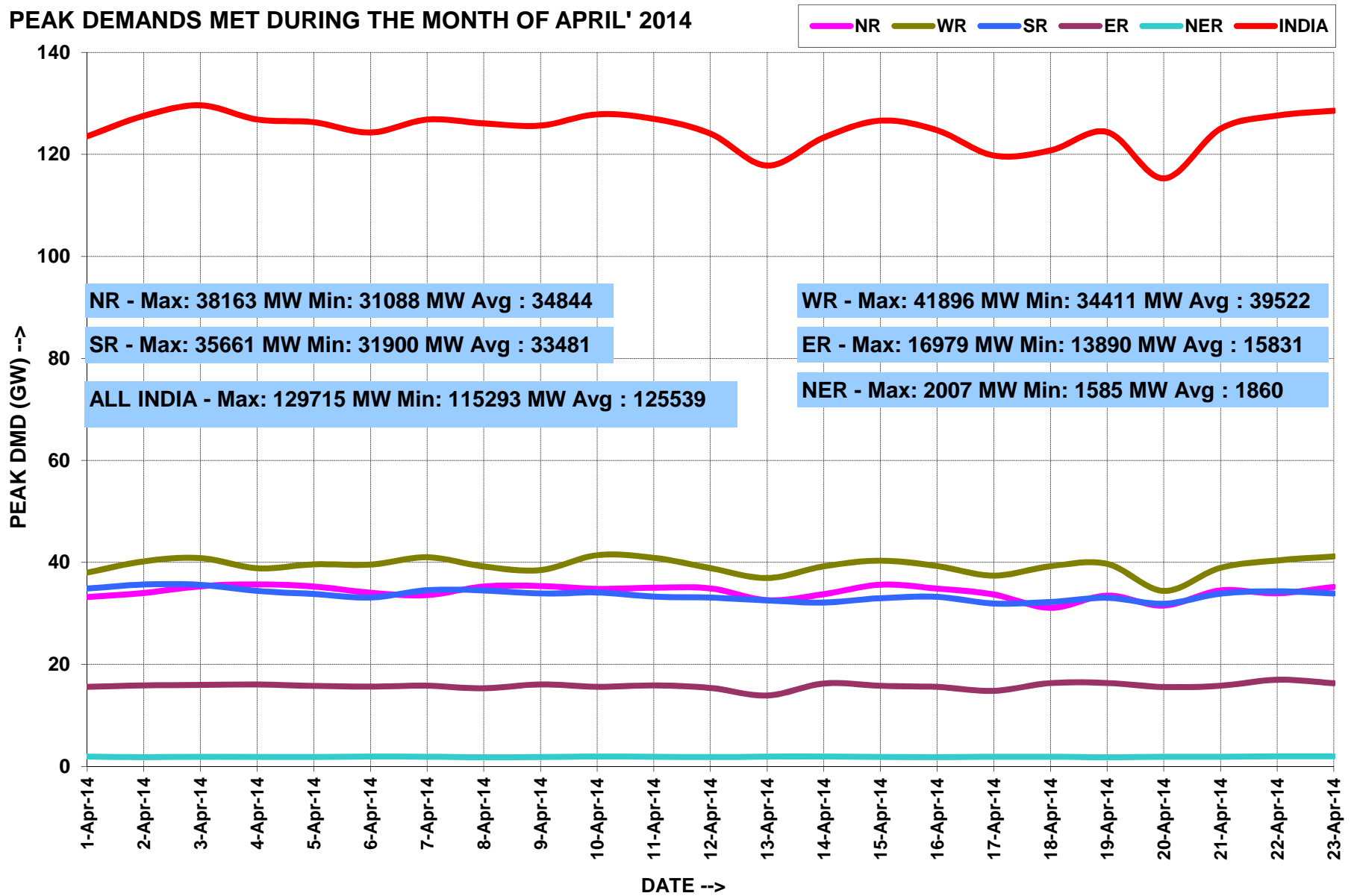
MONTH:- April 2014

सभी आंकड़े मेगावाट मे All figures in MW

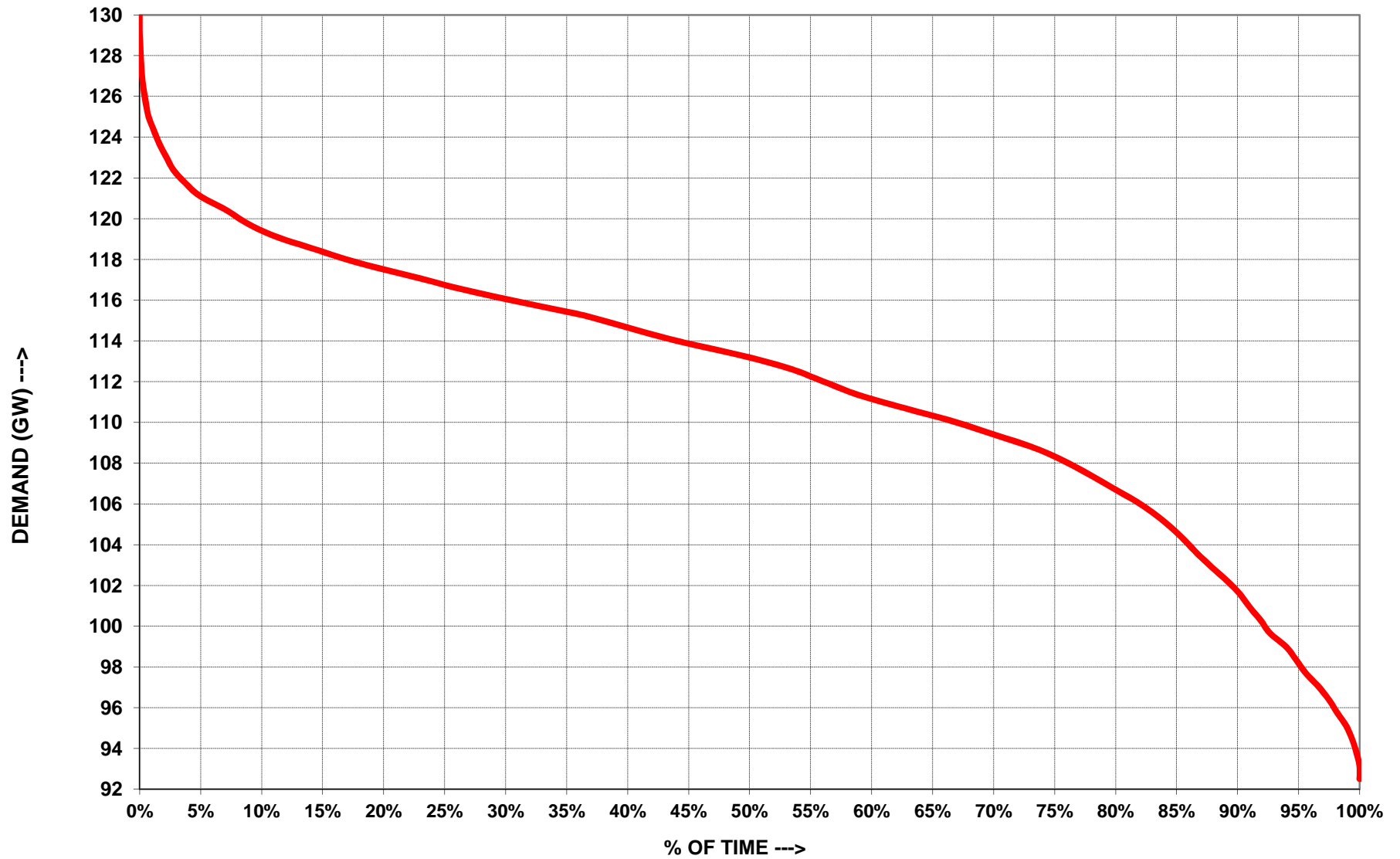
दिनांक Date	उत्तरी क्षे. NR	पश्चिमी क्षे. WR	दक्षिणी क्षे. SR	पूर्वी क्षे. ER	पूर्वोत्तर क्षे. NER	कुल TOTAL
01-Apr-14	33202	37992	34872	15585	1908	123559
02-Apr-14	33998	40210	35661	15893	1808	127570
03-Apr-14	35315	40848	35608	15968	1896	129635
04-Apr-14	35701	38855	34404	16050	1842	126852
05-Apr-14	35275	39616	33789	15778	1859	126317
06-Apr-14	34052	39566	33112	15644	1920	124294
07-Apr-14	33590	41004	34552	15811	1885	126842
08-Apr-14	35277	39206	34516	15307	1780	126086
09-Apr-14	35370	38484	33891	16083	1825	125653
10-Apr-14	34815	41419	34107	15602	1932	127875
11-Apr-14	35042	40904	33289	15861	1883	126979
12-Apr-14	34906	38876	33097	15381	1821	124081
13-Apr-14	32582	36929	32535	13890	1879	117815
14-Apr-14	33773	39229	32134	16249	1932	123317
15-Apr-14	35631	40341	32987	15802	1873	126634
16-Apr-14	34864	39274	33228	15579	1792	124737
17-Apr-14	33709	37400	31951	14825	1898	119783
18-Apr-14	31088	39238	32245	16333	1882	120786
19-Apr-14	33491	39717	33049	16353	1797	124407
20-Apr-14	31541	34411	31900	15562	1879	115293
21-Apr-14	34506	38938	33870	15819	1901	125034
22-Apr-14	33947	40382	34344	16979	1967	127619
23-Apr-14	35193	41174	33908	16315	1991	128581
24-Apr-14	35950	38442	32399	16567	2007	125365
25-Apr-14	36446	39750	34327	16314	1781	128618
26-Apr-14	36045	41896	33252	16603	1751	129547
27-Apr-14	36216	40139	32087	14563	1821	124826
28-Apr-14	37490	40765	33808	15538	1818	129419
29-Apr-14	38149	40981	33153	15847	1585	129715
30-Apr-14	38163	39663	32365	16840	1891	128922
उच्चतम MAXIMUM	38163	41896	35661	16979	2007	129715
निम्नतम MINIMUM	31088	34411	31900	13890	1585	115293
औसत AVERAGE	34844	39522	33481	15831	1860	125539
अब तक का उच्चतम All Time Max.	42255	41896	36126	16979	2013	129715
दिनांक Date	14.09.13	26.04.14	24.03.14	22.04.14	11.10.13	29.04.14

नोट : सभी आंकड़े 1900 बजे की मांगपूर्ति पर आधारित है। Note: The above figures corresponds to value at 1900 Hrs

### PEAK DEMANDS MET DURING THE MONTH OF APRIL' 2014



# ALL INDIA LOAD DURATION CURVE FOR APRIL' 2014



#### 4. राष्ट्रीय स्तर पर विद्युत ऊर्जा आपूर्ति ENERGY MET AT NATIONAL LEVEL

माह:- अप्रैल 2014

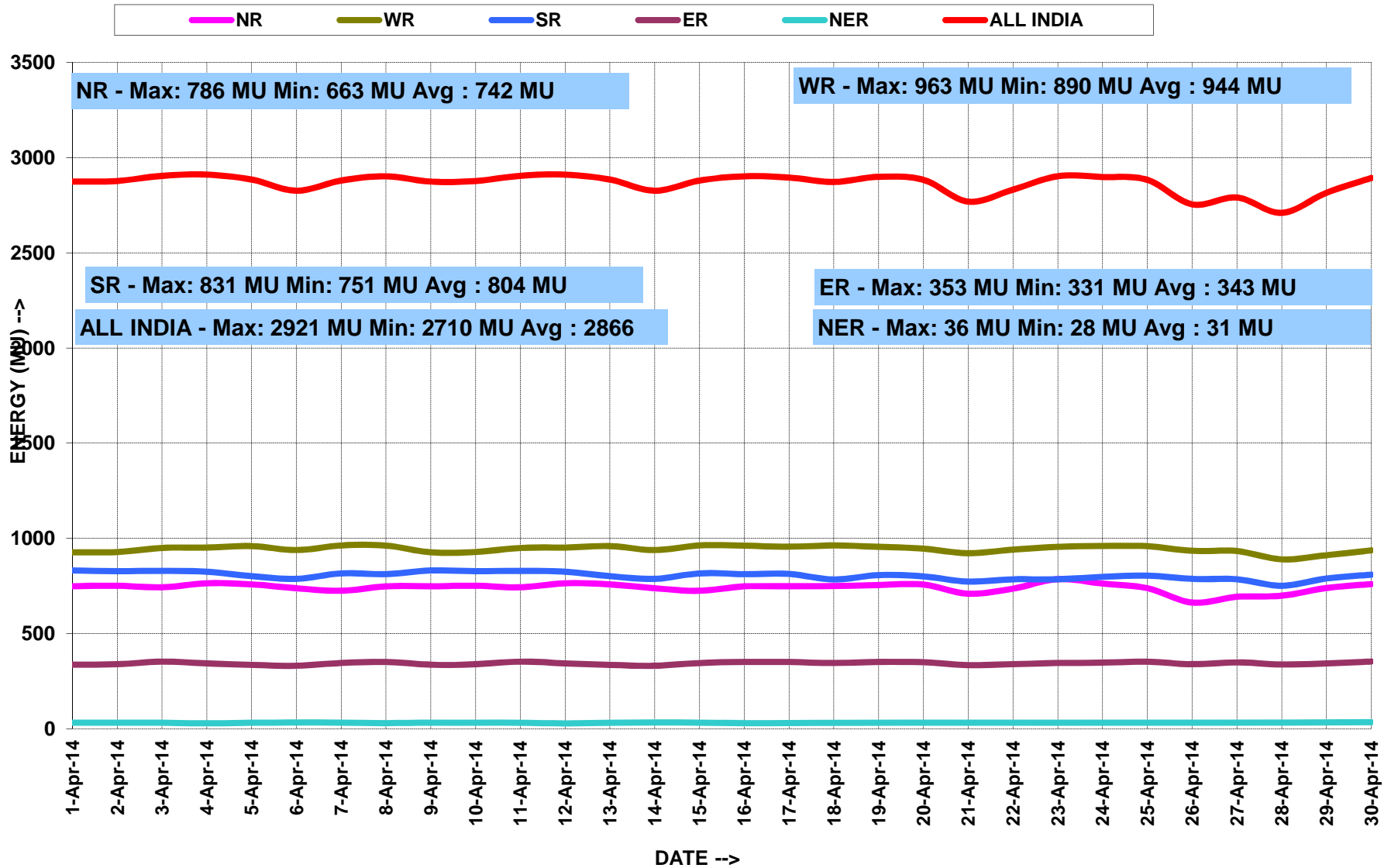
MONTH:- April 2014

सभी आंकड़े मिलियन यूनिट में All figures in MU

दिनांक Date	उत्तरी क्षे. NR	पश्चिमी क्षे. WR	दक्षिणी क्षे. SR	पूर्वी क्षे. ER	पूर्वोत्तर क्षे. NER	कुल TOTAL
01-Apr-14	748	927	831	336	32	2874
02-Apr-14	751	928	828	339	31	2877
03-Apr-14	743	950	829	352	31	2905
04-Apr-14	764	951	825	343	28	2911
05-Apr-14	758	960	801	335	31	2885
06-Apr-14	738	938	787	331	33	2826
07-Apr-14	724	963	816	345	32	2880
08-Apr-14	748	962	812	351	29	2902
09-Apr-14	748	956	813	350	29	2896
10-Apr-14	749	963	784	345	32	2872
11-Apr-14	755	956	807	351	32	2900
12-Apr-14	757	946	800	349	31	2884
13-Apr-14	709	922	773	334	32	2769
14-Apr-14	736	941	785	339	32	2832
15-Apr-14	786	956	785	345	31	2903
16-Apr-14	762	960	798	347	31	2898
17-Apr-14	738	959	804	351	31	2884
18-Apr-14	663	934	787	339	32	2755
19-Apr-14	693	933	785	348	31	2791
20-Apr-14	699	890	751	338	33	2710
21-Apr-14	739	911	789	343	33	2816
22-Apr-14	760	937	809	353	35	2893
23-Apr-14	770	954	809	353	36	2921
24-Apr-14	789	956	782	357	34	2918
25-Apr-14	801	976	804	361	33	2975
26-Apr-14	809	981	800	367	31	2989
27-Apr-14	805	966	764	351	33	2919
28-Apr-14	827	994	788	348	29	2985
29-Apr-14	848	1001	794	351	31	3024
30-Apr-14	858	965	783	357	31	2994
कुल TOTAL	22773	28535	23923	10408	948	86587
उच्चतम MAXIMUM	858	1001	831	367	36	3024
निम्नतम MINIMUM	663	890	751	331	28	2710
औसत AVERAGE	759	951	797	347	32	2886
अब तक का उच्चतम All Time Max.	969	1001	845	367	38	3024
दिनांक Date	12.09.13	29.04.14	26.03.14	26.04.14	22.09.13	29.04.14



# ENERGY MET DURING THE MONTH OF APRIL' 2014



**5.वर्ष 2014-15 के लिए आवृत्ति रूपरेखा FREQUENCY PROFILE FOR YEAR 2014-15**

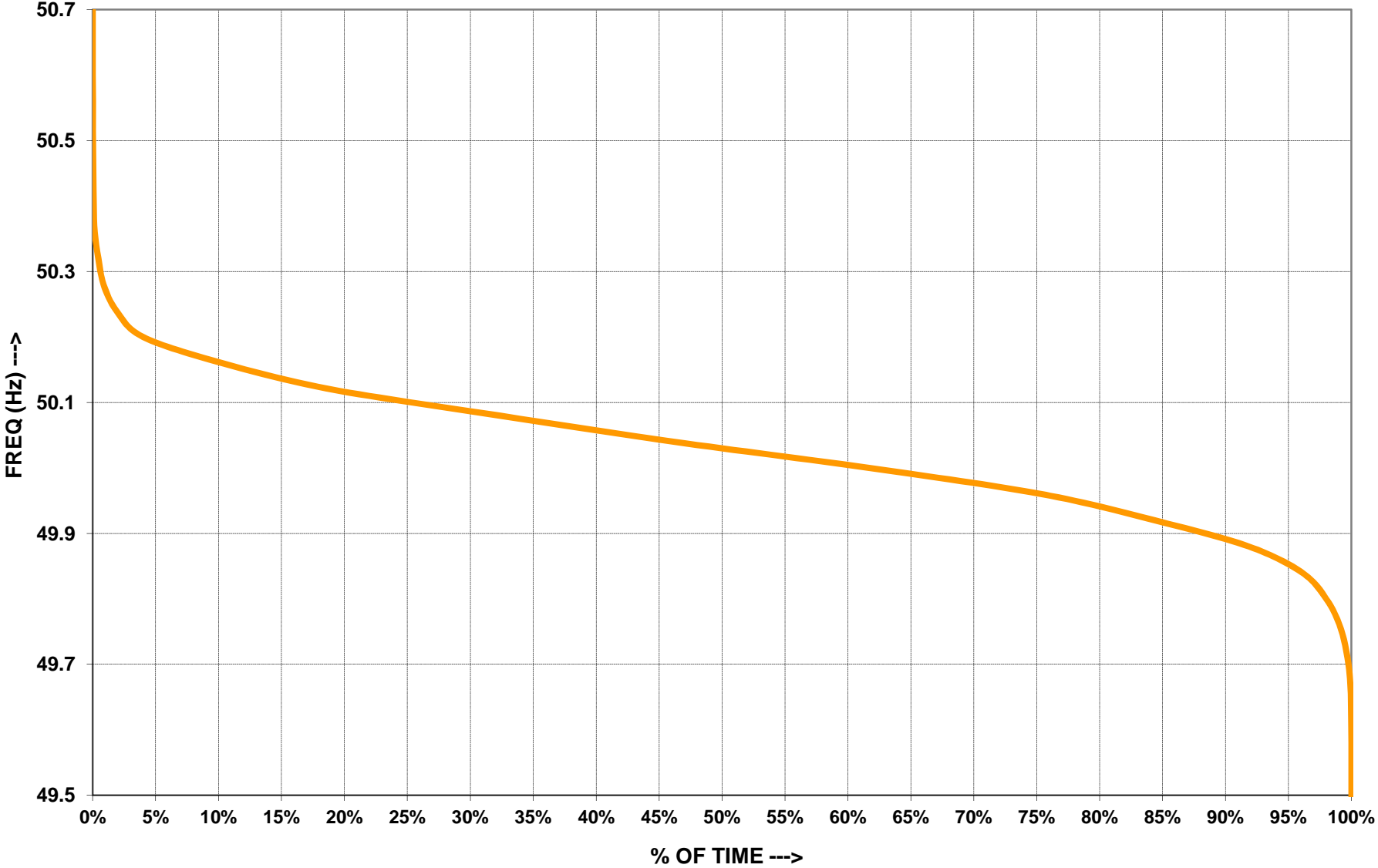
**राष्ट्रीय ग्रिड NATIONAL GRID**

फ़िक्वेंसी रूपरेखा (Hz)		<49.7	49.0-49.9	<49.9	49.9-50.05	>50.05		उच्चतम फ़िक्वेंसी	निम्नतम फ़िक्वेंसी	औसत फ़िक्वेंसी
% समय	Apr-14	1.84	34.20	36.04	50.5	13.46		50.53	49.49	49.94

## 5.1 अप्रैल 2014 के लिए आवृत्ति रूपरेखा FREQUENCY PROFILE FOR APR' 2014

राष्ट्रीय ग्रिड NATIONAL GRID									
फ़िक्वेंसी रूपरेखा (Hz)		<49.0	49.0-49.9	<49.9	49.9-50.05	>50.05	उच्चतम फ़िक्वेंसी	निम्नतम फ़िक्वेंसी	औसत फ़िक्वेंसी
% समय	01-Apr-14	0.00	44.72	44.72	46.11	9.17	50.21	49.65	49.92
	02-Apr-14	0.00	40.42	40.42	52.50	7.08	50.18	49.60	49.92
	03-Apr-14	0.00	28.05	28.05	60.00	11.95	50.23	49.65	49.95
	04-Apr-14	0.00	36.46	36.46	55.56	7.99	50.23	49.66	49.93
	05-Apr-14	0.00	54.17	54.17	40.49	5.35	50.17	49.58	49.89
	06-Apr-14	0.00	31.74	31.74	56.04	12.23	50.25	49.70	49.94
	07-Apr-14	0.00	34.03	34.03	52.84	13.13	50.25	49.63	49.93
	08-Apr-14	0.00	18.75	18.75	58.20	23.06	50.36	49.73	49.98
	09-Apr-14	0.00	10.34	10.34	62.57	27.09	50.32	49.74	50.00
	10-Apr-14	0.00	16.18	16.18	58.54	25.27	50.28	49.75	49.99
	11-Apr-14	0.00	29.87	29.87	54.24	15.90	50.19	49.67	49.95
	12-Apr-14	0.00	67.22	67.22	27.57	5.21	50.15	49.55	49.85
	13-Apr-14	0.00	20.83	20.83	61.04	18.12	50.32	49.64	49.97
	14-Apr-14	0.00	25.70	25.70	57.98	16.32	50.31	49.67	49.96
	15-Apr-14	0.00	35.22	35.22	54.38	10.42	50.17	49.60	49.93
	16-Apr-14	0.00	47.09	47.09	43.48	9.44	50.16	49.58	49.90
	17-Apr-14	0.00	24.93	24.93	54.03	21.04	50.25	49.66	49.96
	18-Apr-14	0.00	24.93	24.93	54.65	20.42	50.31	49.66	49.96
	19-Apr-14	0.00	12.92	12.92	58.40	28.68	50.22	49.70	50.00
	20-Apr-14	0.00	9.93	9.93	60.07	30.00	50.53	49.76	50.02
	21-Apr-14	0.00	41.81	41.81	49.93	8.26	50.17	49.64	49.92
	22-Apr-14	0.00	30.56	30.56	55.83	13.61	50.21	49.69	49.95
	23-Apr-14	0.00	47.71	47.71	44.93	7.36	50.22	49.55	49.90
	24-Apr-14	0.00	56.52	56.52	38.96	4.51	50.20	49.59	49.89
	25-Apr-14	0.00	50.35	50.35	43.96	5.69	50.17	49.61	49.90
	26-Apr-14	0.00	60.28	60.28	36.81	2.92	50.15	49.49	49.86
	27-Apr-14	0.00	45.07	45.07	40.49	14.44	50.24	49.69	49.96
	28-Apr-14	0.00	38.89	38.89	50.49	10.62	50.29	49.56	49.92
	29-Apr-14	0.00	57.22	57.22	35.55	7.22	50.20	49.49	49.89
	30-Apr-14	0.00	39.44	39.44	49.24	11.32	50.20	49.55	49.92

# ALL INDIA GRID FREQUENCY DURATION CURVE FOR APRIL' 2014



**6.राष्ट्रीय स्तर पर जल विद्युत उत्पादन  
HYDRO GENERATION AT NATIONAL LEVEL**

माह:- अप्रैल 2014

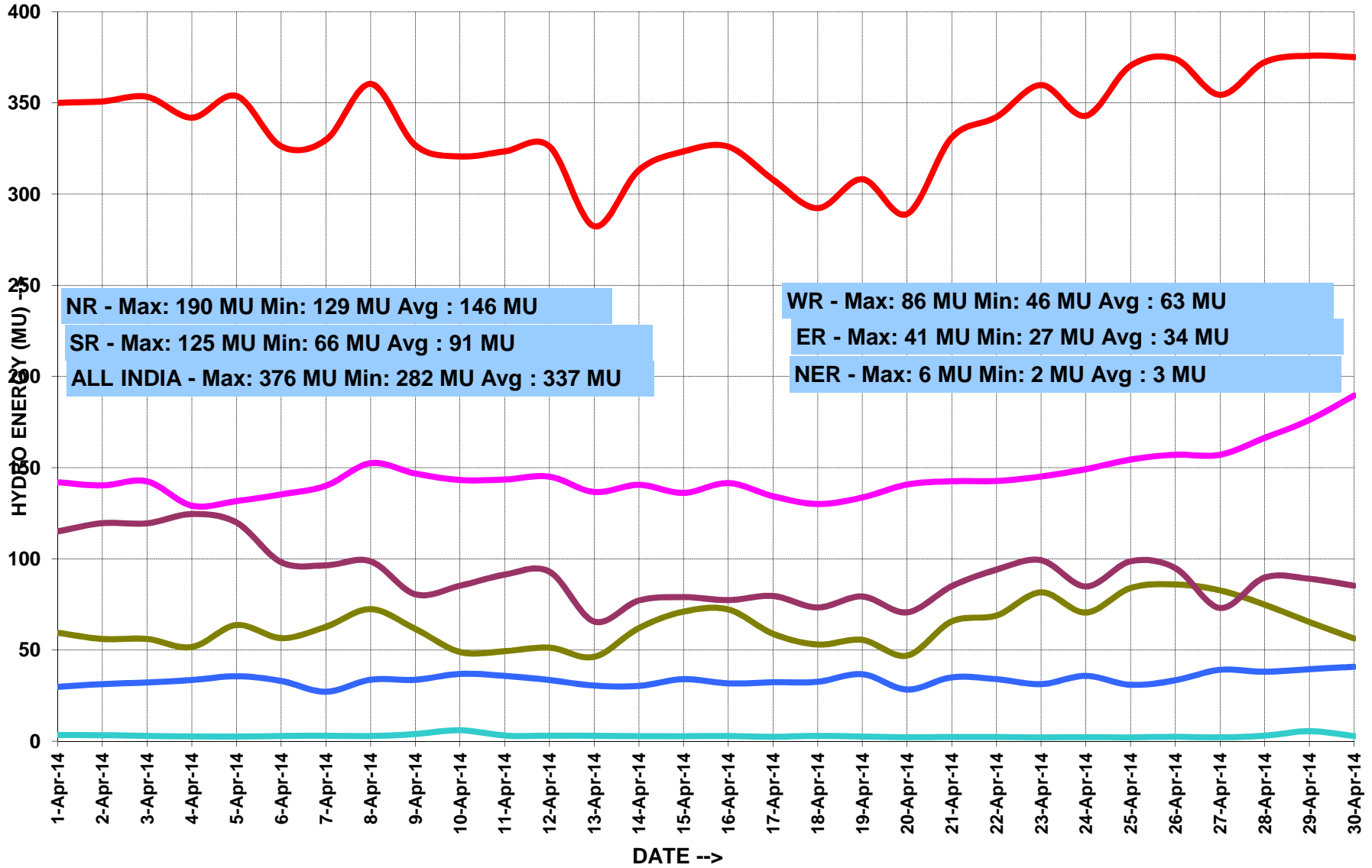
MONTH:- April 2014

सभी आंकड़े मिलियन यूनिट में All figures in MU

दिनांक Date	ऊत्तरी क्षे. NR	पश्चिमी क्षे. WR	दक्षिणी क्षे. SR	पूर्वी क्षे. ER	पूर्वोत्तर क्षे. NER	कुल TOTAL
01-Apr-14	142	59	115	30	4	350
02-Apr-14	140	56	120	31	3	351
03-Apr-14	143	56	120	32	3	353
04-Apr-14	129	52	125	34	3	342
05-Apr-14	132	64	120	36	3	354
06-Apr-14	135	57	98	33	3	326
07-Apr-14	140	63	97	27	3	330
08-Apr-14	153	73	99	34	3	360
09-Apr-14	147	62	81	34	4	327
10-Apr-14	143	49	85	37	6	321
11-Apr-14	144	49	91	36	3	323
12-Apr-14	145	51	93	34	3	326
13-Apr-14	137	46	66	31	3	282
14-Apr-14	141	62	77	30	3	313
15-Apr-14	136	71	79	34	3	323
16-Apr-14	142	72	77	32	3	326
17-Apr-14	134	59	80	32	3	308
18-Apr-14	130	53	73	33	3	292
19-Apr-14	134	56	79	37	3	308
20-Apr-14	141	47	71	28	2	289
21-Apr-14	143	66	85	35	2	331
22-Apr-14	143	69	94	34	2	342
23-Apr-14	145	82	99	31	2	360
24-Apr-14	149	71	85	36	2	343
25-Apr-14	155	84	99	31	2	370
26-Apr-14	157	86	95	33	3	374
27-Apr-14	157	83	73	39	2	354
28-Apr-14	166	75	90	38	3	372
29-Apr-14	176	65	89	40	6	376
30-Apr-14	190	56	85	41	3	375
<b>कुल TOTAL</b>	<b>4367</b>	<b>1894</b>	<b>2740</b>	<b>1013</b>	<b>90</b>	<b>10104</b>
<b>उच्चतम MAXIMUM</b>	<b>190</b>	<b>86</b>	<b>125</b>	<b>41</b>	<b>6</b>	<b>376</b>
<b>निम्नतम MINIMUM</b>	<b>129</b>	<b>46</b>	<b>66</b>	<b>27</b>	<b>2</b>	<b>282</b>
<b>औसत AVERAGE</b>	<b>146</b>	<b>63</b>	<b>91</b>	<b>34</b>	<b>3</b>	<b>337</b>
<b>अब तक का उच्चतम All Time Max.</b>	<b>319</b>	<b>142</b>	<b>202</b>	<b>91</b>	<b>27</b>	<b>712</b>
<b>दिनांक Date</b>	<b>22.08.13</b>	<b>29.09.11</b>	<b>08.08.13</b>	<b>07.09.13</b>	<b>14.09.10</b>	<b>27.08.13</b>

# HYDRO ENERGY DURING THE MONTH OF APRIL' 2014

NR WR SR ER NER INDIA



**7. राष्ट्रीय स्तर पर पवन ऊर्जा उत्पादन**  
**WIND GENERATION AT NATIONAL LEVEL**  
**माह:- अप्रैल 2014**      **MONTH:- April 2014**

सभी आंकड़े मिलियन यूनिट में All figures in MU

दिनांक Date	ऊत्तरी क्षे. NR	पश्चिमी क्षे. WR	दक्षिणी क्षे. SR	पूर्वी क्षे. ER	पूर्वोत्तर क्षे. NER	कुल TOTAL
01-Apr-14	6.5	28.8	19.5	...	...	54.8
02-Apr-14	8.7	22.4	15.0	...	...	46.1
03-Apr-14	2.5	13.1	12.4	...	...	28.0
04-Apr-14	5.9	13.2	8.9	...	...	28.0
05-Apr-14	5.9	17.5	8.4	...	...	31.8
06-Apr-14	16.9	19.9	11.0	...	...	47.8
07-Apr-14	5.3	22.2	13.6	...	...	41.1
08-Apr-14	2.9	19.7	25.3	...	...	47.9
09-Apr-14	2.5	19.3	38.2	...	...	60.0
10-Apr-14	6.0	16.1	17.0	...	...	39.1
11-Apr-14	3.2	26.5	26.9	...	...	56.6
12-Apr-14	13.4	27.8	17.4	...	...	58.6
13-Apr-14	13.3	24.8	12.0	...	...	50.1
14-Apr-14	7.4	12.5	13.4	...	...	33.3
15-Apr-14	6.7	12.0	9.4	...	...	28.1
16-Apr-14	4.1	16.1	17.1	...	...	37.3
17-Apr-14	5.4	25.1	28.4	...	...	58.9
18-Apr-14	2.0	17.8	22.7	...	...	42.5
19-Apr-14	3.0	10.3	9.1	...	...	22.4
20-Apr-14	3.3	10.7	11.5	...	...	25.5
21-Apr-14	2.6	8.3	8.6	...	...	19.5
22-Apr-14	2.8	21.0	11.0	...	...	34.8
23-Apr-14	1.9	18.3	8.8	...	...	29.0
24-Apr-14	2.9	23.6	14.8	...	...	41.3
25-Apr-14	4.1	20.1	15.9	...	...	40.1
26-Apr-14	2.3	20.3	15.3	...	...	37.9
27-Apr-14	1.0	18.6	12.7	...	...	32.3
28-Apr-14	1.1	21.1	9.1	...	...	31.3
29-Apr-14	2.6	18.1	10.5	...	...	31.2
30-Apr-14	6.9	21.5	10.7	...	...	39.1
<b>कुल TOTAL</b>	<b>153</b>	<b>567</b>	<b>455</b>	<b>...</b>	<b>...</b>	<b>1175</b>
<b>उच्चतम MAXIMUM</b>	<b>17</b>	<b>29</b>	<b>38</b>	<b>...</b>	<b>...</b>	<b>60</b>
<b>निम्नतम MINIMUM</b>	<b>1</b>	<b>8</b>	<b>8</b>	<b>...</b>	<b>...</b>	<b>19</b>
<b>औसत AVERAGE</b>	<b>5</b>	<b>19</b>	<b>15</b>	<b>...</b>	<b>...</b>	<b>39</b>
<b>अब तक का उच्चतम All Time Max.</b>	<b>34.9</b>	<b>83.5</b>	<b>114.8</b>	<b>...</b>	<b>...</b>	<b>223.8</b>
<b>दिनांक Date</b>	<b>12.06.12</b>	<b>03.08.12</b>	<b>14.06.13</b>	<b>...</b>	<b>...</b>	<b>03.08.12</b>



**8. ACTUAL POWER SUPPLY POSITION - APRIL 2014**

REGION	STATE	Requirement/Availability in MU/DAY			Requirement/Availability in MU				Peak Demand/Peak Met in MW			
		Requirement	Energy met	Surplus(+)/ Deficit(-)	Requirement	Energy met	Surplus(+)/ Deficit(-)	% Shortage	Requirement	Peak Demand	Surplus(+)/ Deficit(-)	% Shortage
NR	Chandigarh	4	4	0	110	110	0	0.0	259	259	0	0.0
	Delhi	71	71	0	2117	2116	-1	-0.1	4418	4418	0	0.0
	Haryana	99	98	0	2957	2942	-15	-0.5	6173	6173	0	0.0
	H.P.	24	24	0	706	706	0	0.0	1295	1295	0	0.0
	J&K	46	37	-9	1378	1103	-275	-20.0	2422	1938	-484	-20.0
	Punjab	98	98	0	2945	2940	-5	-0.2	6126	6126	0	0.0
	Rajasthan	158	157	-1	4738	4721	-17	-0.4	7977	7951	-26	-0.3
	U.P.	278	246	-31	8327	7387	-940	-11.3	13435	11875	-1560	-11.6
	Uttarakhand	32	31	-1	957	939	-18	-1.9	1649	1649	0	0.0
	NFF/Railway	2	2	0	63	63	0	0.0	98	98	0	0.0
<b>TOTAL</b>	<b>810</b>	<b>768</b>	<b>-42</b>	<b>24298</b>	<b>23025</b>	<b>-1273</b>	<b>-5.2</b>	<b>40877</b>	<b>38555</b>	<b>-2322</b>	<b>-5.7</b>	
WR	Gujarat	278	277	0	8327	8317	-9	-0.1	13793	13740	-53	-0.4
	Madhya Pradesh	155	155	0	4643	4642	-2	0.0	7275	7271	-4	-0.1
	Chhattisgarh	78	78	0	2349	2335	-14	-0.6	3638	3486	-152	-4.2
	Maharashtra	417	407	-11	12523	12206	-317	-2.5	20581	19386	-1195	-5.8
	Goa	9	9	0	261	260	-1	-0.5	489	489	0	0.0
	D&D	6	6	0	181	181	0	0.0	290	290	0	0.0
	DNH	15	15	0	447	446	-1	-0.2	685	685	0	0.0
	ESIL	10	10	0	297	296	-1	-0.2	621	621	0	0.0
<b>TOTAL</b>	<b>963</b>	<b>951</b>	<b>-11</b>	<b>28877</b>	<b>28534</b>	<b>-343</b>	<b>-1.2</b>	<b>44773</b>	<b>43968</b>	<b>-805</b>	<b>-1.8</b>	
SR	AP-TRANSCO	302	265	-37	9045	7941	-1104	-12.2	13367	12446	-921	-6.9
	KPTCL	200	188	-12	5993	5633	-360	-6.0	9932	9503	-429	-4.3
	KSEB	64	64	-1	1933	1915	-18	-0.9	3665	3512	-153	-4.2
	TNEB	296	274	-22	8881	8218	-663	-7.5	12766	12747	-19	-0.1
	PONDICHERRY	7	7	0	210	210	0	0.0	347	348	1	0.3
	<b>TOTAL</b>	<b>869</b>	<b>797</b>	<b>-72</b>	<b>26062</b>	<b>23915</b>	<b>-2147</b>	<b>-8.2</b>	<b>39207</b>	<b>36605</b>	<b>-2602</b>	<b>-6.6</b>
ER	Bihar	43	46	3	1303	1392	89	6.8	2700	2537	-163	-6.0
	JSEB	23	20	-3	700	614	-86	-12.3	1130	1000	-130	-11.5
	DVC	52	57	5	1550	1714	164	10.6	2585	2618	33	1.3
	Odisha	72	77	6	2146	2317	171	8.0	3700	3925	225	6.1
	West Bengal	145	157	12	4360	4713	353	8.1	7540	7836	296	3.9
<b>TOTAL</b>	<b>335</b>	<b>358</b>	<b>23</b>	<b>10059</b>	<b>10750</b>	<b>691</b>	<b>6.9</b>	<b>17222</b>	<b>17207</b>	<b>-15</b>	<b>-0.1</b>	
NER	Arunachal Pradesh	2	1	0	47	44	-3	-5.8	105	104	-1	-0.7
	Assam	21	20	-1	630	586	-44	-7.0	1343	1230	-113	-8.4
	Manipur	2	2	0	49	46	-3	-6.7	115	112	-3	-2.3
	MeSEB	4	4	-1	132	113	-19	-14.6	280	272	-8	-2.9
	Mizoram	1	1	0	33	31	-2	-4.8	77	76	-1	-0.9
	Nagaland	2	2	0	48	46	-3	-5.3	105	102	-3	-2.9
	Tripura	3	3	0	85	82	-3	-3.6	246	247	1	0.3
<b>TOTAL</b>	<b>34</b>	<b>32</b>	<b>-3</b>	<b>1025</b>	<b>948</b>	<b>-77</b>	<b>-7.5</b>	<b>2270</b>	<b>2142</b>	<b>-128</b>	<b>-5.6</b>	
<b>ALL INDIA</b>		<b>3011</b>	<b>2886</b>	<b>-105</b>	<b>90321</b>	<b>86587</b>	<b>-3148</b>	<b>-4.1</b>	<b>144349</b>	<b>129715</b>	<b>-14634</b>	<b>-10.1</b>

### 9. ENERGY COMPARISON OF APRIL 2014 Vs APRIL 2013

REGION	STATE	Energy Requirement (MU)					Energy Met (MU)				
		Apr-13	Apr-14	Difference	% Change	Average MU/day for Apr-14	Apr-13	Apr-14	Difference	% Change	Average for MU/day Apr-14
NR	Chandigarh	120	110	-10	-8	3.7	120	110	-10	-8	3.7
	Delhi	2184	2117	-67	-3	70.6	2183	2116	-67	-3	70.5
	Haryana	2891	2957	66	2	98.6	2869	2942	73	3	98.1
	H.P.	703	706	3	0	23.5	699	706	7	1	23.5
	J&K	1200	1378	178	15	45.9	916	1103	187	20	36.8
	Punjab	3059	2945	-114	-4	98.2	3032	2940	-92	-3	98.0
	Rajasthan	4280	4738	458	11	157.9	4254	4721	467	11	157.4
	U.P.	7744	8327	583	8	277.6	6340	7387	1047	17	246.2
	Uttarakhand	936	957	21	2	31.9	917	939	22	2	31.3
	NFF/Railway	65	63	-2	-3	2.1	65	63	-2	-3	2.1
	<b>TOTAL</b>	<b>23182</b>	<b>24298</b>	<b>1116</b>	<b>5</b>	<b>809.9</b>	<b>21394</b>	<b>23025</b>	<b>1631</b>	<b>8</b>	<b>767.5</b>
WR	Gujarat	7784	8327	543	7	277.6	7776	8317	541	7	277.2
	Madhya Pradesh	4089	4643	554	14	154.8	4083	4642	559	14	154.7
	Chhattisgarh	2133	2349	216	10	78.3	2101	2335	234	11	77.8
	Maharashtra	11248	12523	1275	11	417.4	10933	12206	1273	12	406.9
	Goa	239	261	22	9	8.7	238	260	22	9	8.7
	D&D	185	181	-4	-2	6.0	184	181	-3	-2	6.0
	DNH	421	447	26	6	14.9	419	446	27	6	14.9
	ESIL		297			9.9		296			9.9
	<b>TOTAL</b>	<b>26097</b>	<b>28877</b>	<b>2780</b>	<b>11</b>	<b>962.6</b>	<b>25734</b>	<b>28534</b>	<b>2800</b>	<b>11</b>	<b>951.1</b>
SR	AP-TRANSCO	8857	9045	188	2	301.5	7335	7941	606	8	264.7
	KPTCL	6168	5993	-175	-3	199.8	4923	5633	710	14	187.8
	KSEB	1925	1933	8	0	64.4	1772	1915	143	8	63.8
	TNEB	8435	8881	446	5	296.0	7006	8218	1212	17	273.9
	PONDY	195	210	15	8	7.0	194	210	16	8	7.0
		<b>TOTAL</b>	<b>25580</b>	<b>26062</b>	<b>482</b>	<b>2</b>	<b>868.7</b>	<b>21231</b>	<b>23915</b>	<b>2684</b>	<b>13</b>
ER	Bihar	1265	1303	38	3	43.4	981	1392	411	42	46.4
	JSEB	700	700	0	0	23.3	569	614	45	8	20.5
	DVC	1545	1550	5	0	51.7	1703	1714	11	1	57.1
	Odisha	2140	2146	6	0	71.5	2042	2317	275	13	77.2
	West Bengal	4121	4360	239	6	145.3	4109	4713	604	15	157.1
	<b>TOTAL</b>	<b>9771</b>	<b>10059</b>	<b>288</b>	<b>3</b>	<b>335.3</b>	<b>9404</b>	<b>10750</b>	<b>1346</b>	<b>14</b>	<b>358.3</b>
NER	Arunachal Pradesh	36	47	11	31	1.6	33	44	11	34	1.5
	Assam	535	630	95	18	21.0	483	586	103	21	19.5
	Manipur	36	49	13	37	1.6	34	46	12	35	1.5
	MeSEB	128	132	4	3	4.4	117	113	-4	-3	3.8
	Mizoram	35	33	-2	-7	1.1	34	31	-3	-9	1.0
	Nagaland	33	48	15	46	1.6	31	46	15	47	1.5
	Tripura	98	85	-13	-13	2.8	90	82	-8	-9	2.7
	<b>TOTAL</b>	<b>902</b>	<b>1025</b>	<b>123</b>	<b>14</b>	<b>34.2</b>	<b>823</b>	<b>948</b>	<b>125</b>	<b>15</b>	<b>31.6</b>
<b>ALL INDIA</b>		<b>85532</b>	<b>90321</b>	<b>4789</b>	<b>6</b>	<b>3010.7</b>	<b>78586</b>	<b>86587</b>	<b>8587</b>	<b>11</b>	<b>2886.2</b>

### 10. DEMAND COMPARISON OF APRIL 2014 Vs APRIL 2013

REGION	STATE	Peak Requirement (MW)				Peak Met (MW)			
		Apr-13	Apr-14	Difference	% Change	Apr-13	Apr-14	Difference	% Change
NR	Chandigarh	226	259	33	14.6	226	259	33	14.6
	Delhi	4190	4418	228	5.4	4190	4418	228	5.4
	Haryana	5879	6173	294	5.0	5834	6173	339	5.8
	H.P.	1269	1295	26	2.0	1269	1295	26	2.0
	J&K	2185	2422	237	10.8	1639	1938	299	18.2
	Punjab	5208	6126	918	17.6	5208	6126	918	17.6
	Rajasthan	7512	7977	465	6.2	7479	7951	472	6.3
	U.P.	12083	13435	1352	11.2	10638	11875	1237	11.6
	Uttarakhand	1673	1649	-24	-1.4	1673	1649	-24	-1.4
	NFF/Railway	100	98	-2	-2.0	100	98	-2	-2.0
	<b>TOTAL</b>	<b>37674</b>	<b>40877</b>	<b>3203</b>	<b>8.5</b>	<b>35764</b>	<b>38555</b>	<b>2791</b>	<b>7.8</b>
WR	Gujarat	12063	13793	1730	14.3	12042	13740	1698	14.1
	Madhya Pradesh	7579	7275	-304	-4.0	7543	7271	-272	-3.6
	Chhattisgarh	3505	3638	133	3.8	3459	3486	27	0.8
	Maharashtra	17921	20581	2660	14.8	17210	19386	2176	12.6
	Goa	476	489	13	2.7	414	489	75	18.1
	D&D	279	290	11	3.9	276	290	14	5.1
	DNH	612	685	73	11.9	609	685	76	12.5
	ESIL		621				621		
	<b>TOTAL</b>	<b>39540</b>	<b>44773</b>	<b>5233</b>	<b>13.2</b>	<b>39009</b>	<b>43968</b>	<b>4959</b>	<b>12.7</b>
SR	AP-TRANSCO	13707	13367	-340	-2.5	11410	12446	1036	9.1
	KPTCL	9614	9932	318	3.3	8103	9503	1400	17.3
	KSEB	3397	3665	268	7.9	3065	3512	447	14.6
	TNEB	12249	12766	517	4.2	11641	12747	1106	9.5
	PONDY	325	347	22	6.8	321	348	27	8.4
		<b>TOTAL</b>	<b>37560</b>	<b>39207</b>	<b>1647</b>	<b>4.4</b>	<b>33377</b>	<b>36605</b>	<b>3228</b>
ER	Bihar	2700	2700	0	0.0	1762	2537	775	44.0
	JSEB	1130	1130	0	0.0	1061	1000	-61	-5.7
	DVC	2575	2585	10	0.4	3530	2618	-912	-25.8
	Odisha	3640	3700	60	1.6	3747	3925	178	4.8
	West Bengal	7332	7540	208	2.8	7657	7836	179	2.3
		<b>TOTAL</b>	<b>16949</b>	<b>17222</b>	<b>273</b>	<b>1.6</b>	<b>16002</b>	<b>17207</b>	<b>1205</b>
NER	Arunachal Pradesh	97	105	8	8.0	95	104	9	9.5
	Assam	1159	1343	184	15.9	1012	1230	218	21.5
	Manipur	99	115	16	15.8	98	112	14	14.3
	MeSEB	290	280	-10	-3.6	273	272	-1	-0.5
	Mizoram	65	77	12	18.0	64	76	12	18.8
	Nagaland	82	105	23	27.9	80	102	22	27.2
	Tripura	210	246	36	17.3	206	247	41	19.9
		<b>TOTAL</b>	<b>2002</b>	<b>2270</b>	<b>268</b>	<b>13.4</b>	<b>1828</b>	<b>2142</b>	<b>314</b>
<b>ALL INDIA</b>		<b>133725</b>	<b>144349</b>	<b>10624</b>	<b>7.9</b>	<b>117723</b>	<b>129715</b>	<b>11992</b>	<b>10</b>

**11. SCHEDULE AND DRAWAL OF CONSTITUENTS - APRIL 2014**

REGION	STATE	SCHEDULE (MU)	ACTUAL DRAWAL (MU)	Over drawal(+)/ Under Drawal(-) (MU)	% OD/UD	SCHEDULE (MU/DAY)	ACTUAL DRAWAL (MU/DAY)	Over drawal(+)/ Under Drawal(-) (MU/DAY)
NR	Chandigarh	107	118	11.7	11.0	3.6	3.9	0.4
	Delhi	1688	1655	-32.6	-1.9	56.3	55.2	-1.1
	Haryana	1855	1888	32.8	1.8	61.8	62.9	1.1
	H.P.	348	360	11.4	3.3	11.6	12.0	0.4
	J&K	631	684	53.1	8.4	21.0	22.8	1.8
	Punjab	1546	1558	11.9	0.8	51.5	51.9	0.4
	Rajasthan	1362	1351	-10.6	-0.8	45.4	45.0	-0.4
	U.P.	3263	3202	-61.5	-1.9	108.8	106.7	-2.1
	Uttarakhand	635	657	22.0	3.5	21.2	21.9	0.7
	NFF/Railway	47	66	19.5	41.9	1.6	2.2	0.7
WR	Gujarat	1593	1553	-39.8	-2.5	53.1	51.8	-1.3
	Madhya Pradesh	2258	2206	-51.7	-2.3	75.3	73.5	-1.7
	Maharashtra	3824	3924	99.8	2.6	127.5	130.8	3.3
	Chhattisgarh	657	655	-2.1	-0.3	21.9	21.8	-0.1
	Goa	231	244	13.0	5.6	7.7	8.1	0.4
	D&D	180	181	1.6	0.9	6.0	6.0	0.1
	D&NH	441	446	5.2	1.2	14.7	14.9	0.2
	ESIL	307	296	-10.3	-3.4	10.2	9.9	-0.3
SR	APTRANSCO	2737	2852	114.9	4.2	91.2	95.1	3.8
	KPTCL	959	978	18.6	1.9	32.0	32.6	0.6
	KSEB	839	881	42.1	5.0	28.0	29.4	1.4
	TNEB	2887	2932	44.6	1.5	96.2	97.7	1.5
	PONDICHERRY	212	210	-2.3	-1.1	7.1	7.0	-0.1
	Goa(SR)	64	66	1.4	2.2	2.1	2.2	0.0
ER	Bihar	1289	1310	21.1	1.6	43.0	43.7	0.7
	JSEB	316	324	8.4	2.7	10.5	10.8	0.3
	DVC	-421	-420	1.3	-0.3	-14.0	-14.0	0.0
	GRIDCO	614	600	-14.3	-2.3	20.5	20.0	-0.5
	WBSEB	1453	1485	31.6	2.2	48.4	49.5	1.1
	Sikkim	39	31	-8.6	-21.9	1.3	1.0	-0.3
NER	Arunachal Pradesh	32	49	17.6	55.1	1.1	1.6	0.6
	Assam	370	399	29.2	7.9	12.3	13.3	1.0
	Manipur	40	43	2.2	5.5	1.3	1.4	0.1
	MeSEB	85	93	7.8	9.2	2.8	3.1	0.3
	Mizoram	28	32	4.6	16.5	0.9	1.1	0.2
	Nagaland	43	51	7.3	16.8	1.4	1.7	0.2
	Tripura	28	36	8.6	31.2	0.9	1.2	0.3

## 12. INTER REGIONAL EXCHANGES 2014-15

	April'14	Fin. Year 2014-15 Till April 2014
Name of Line		
<b>Import of NR from WR (WR-NR)</b>		
WR - NR 765 kV Gwalior - Agra D/C	1131.41	1131.41
WR - NR HVDC Vindhyachal	226.93	226.93
WR - NR 400 kV Zerda Kankroli	0.00	0.00
WR - NR 400 kV Zerda Bhinmal	0.00	0.00
WR - NR 220 kV Badod - Kota/ Modak	0.00	0.00
WR - NR 220 kV Auraiya - Malanpur/Mehgaon	0.00	0.00
WR - NR HVDC Mundra - Mohindergarh	1435.93	1435.93
<b>Total WR - NR</b>	<b>2794.27</b>	<b>2794.27</b>
<b>Import of NR from ER (ER-NR)</b>	0.00	0.00
ER - NR 765 kV Sasaram - Fatehpur	15.63	15.63
ER - WR 765 kV Gaya - Fatehpur	0.00	0.00
ER - WR 400 kV Pusauli - Balia	1.80	1.80
ER-NR 400 kV Patna - Balia 2xD/C	199.41	199.41
ER - NR 400 kV Muzaffarpur - Gorakhpur D/C	60.87	60.87
ER - NR 400 kV Biharshariff - Balia D/C	73.20	73.20
ER - NR HVDC Sasaram ( Bypass)	214.12	214.12
ER - NR 220 kV Pusauli - Sahupuri	112.59	112.59
ER - NR 132 kV Sahupuri - Karamnasa	0.00	0.00
ER - NR 132 kV Rihand - Son Nagar	0.00	0.00
<b>Total NR - WR</b>	<b>677.62</b>	<b>677.62</b>
<b>Export of NR to WR (NR-WR)</b>	0.00	0.00
NR - WR 765 kV Gwalior - Agra D/C	0.00	0.00
NR - WR HVDC Vindhyachal	7.75	7.75
NR - WR 400 kV Zerda Kankroli	180.30	180.30
NR - WR 400 kV Zerda Bhinmal	133.65	133.65
NR - WR 220 kV Badod - Kota/ Modak	88.03	88.03
NR - WR 220 kV Auraiya - Malanpur/Mehgaon	26.51	26.51
NR - WR HVDC Mundra - Mohindergarh	0.00	0.00
<b>Total NR - WR</b>	<b>436.24</b>	<b>436.24</b>
<b>Export of NR to ER (NR-ER)</b>	0.00	0.00
NR - ER 765 kV Sasaram - Fatehpur	39.73	39.73
NR - ER 765 kV Gaya - Fatehpur	50.11	50.11
NR - ER 400 kV Pusauli - Balia	66.02	66.02
NR - ER 400 kV Patna - Balia 2xD/C	0.00	0.00
NR - ER 400 kV Muzaffarpur - Gorakhpur D/C	5.12	5.12
NR - ER 400 kV Biharshariff - Balia D/C	2.38	2.38
NR - ER HVDC Sasaram ( Bypass)	25.06	25.06
NR - ER 220 kV Pusauli - Sahupuri	0.00	0.00
NR - ER 132 kV Sahupuri - Karamnasa	0.00	0.00
NR - ER 132 kV Rihand - Son Nagar	12.54	12.54
<b>Total NR - ER</b>	<b>200.97</b>	<b>200.97</b>

## 12. INTER REGIONAL EXCHANGES 2014-15

	April'14	Fin. Year 2014-15 Till April 2014
Name of Line		
<b>Export of WR to ER (WR-ER)</b>	0.00	0.00
WR - ER 765 kV Ranchi - Dharamjaygarh	4.29	4.29
WR - ER 400 kV Sipat - Ranchi D/C	5.57	5.57
WR - ER 400 kV Raigarh - Sterlite D/C	0.00	0.00
WR - ER 400 kV Raigarh - Jharsuguda D/C	2.20	2.20
WR - ER 220 kV Korba - Budhipadar D/C	0.19	0.19
WR - ER 220 kV Raigarh - Budhipadar	0.00	0.00
<b>Total WR - ER</b>	<b>7.95</b>	<b>7.95</b>
<b>Import of WR from ER (ER - WR)</b>	0.00	0.00
ER - WR 765 kV Ranchi - Dharamjaygarh	0.00	0.00
ER - WR 400 kV Sipat - Ranchi D/C	2.42	2.42
ER - WR 400 kV Raigarh - Sterlite D/C	115.86	115.86
ER - WR 400 kV Raigarh - Jharsuguda D/C	0.00	0.00
ER - WR 220 kV Korba - Budhipadar D/C	4.66	4.66
ER - WR 220 kV Raigarh - Budhipadar	70.98	70.98
<b>Total ER - WR</b>	<b>193.92</b>	<b>193.92</b>
<b>Export of ER to NER</b>	0.00	0.00
ER - NER 400 kV Binaguri - Bongaigaon D/C	231.89	231.89
ER - NER 220 kV Birpara - Salakati D/C	41.64	41.64
<b>Total ER - NER</b>	<b>273.52</b>	<b>273.52</b>
<b>Import of ER from NER (NER - ER)</b>	0.00	0.00
NER - ER 400 kV Binaguri - Bongaigaon D/C	0.00	0.00
NER - ER 220 kV Birpara - Salakati D/C	0.00	0.00
<b>Total NER - ER</b>	<b>0.00</b>	<b>0.00</b>
<b>Export of ER to SR (ER - SR)</b>	0.00	0.00
ER - SR HVDC Gazuwaka	534.56	534.56
ER - SR HVDC Talchar - Kolar	1419.85	1419.85
ER - SR 220 kV Balimela - Upper Sileru*	0.38	0.38
<b>Total ER - SR</b>	<b>1954.41</b>	<b>1954.41</b>
<b>Import of ER from SR (SR - ER)</b>	0.00	0.00
SR - ER HVDC Gazuwaka	0.00	0.00
SR - ER HVDC Talchar - Kolar	0.00	0.00
<b>Total SR - ER</b>	<b>0.00</b>	<b>0.00</b>
<b>Export of WR to SR (WR-SR)</b>	0.00	0.00
WR - SR HVDC Bhadravati	691.96	691.96
WR - SR 765 kV Sholapur - Raichur	78.84	78.84
<b>Total WR - SR</b>	<b>770.80</b>	<b>770.80</b>
<b>Import of WR from SR (SR - WR)</b>	0.00	0.00
SR - WR HVDC Bhadravati	0.00	0.00
SR - WR 765 kV Raichur - Sholapur	35.99	35.99
<b>Total SR - WR</b>	<b>35.99</b>	<b>35.99</b>
<b>TOTAL ALL INDIA</b>	<b>7346</b>	<b>7346</b>

\* from 21.04.14 to 30.04.14

Date	12.1 Import of NR from WR & ER during April 2014																		
	Import of NR from WR (WR-NR)								Import of NR from ER (ER-NR)										
	WR - NR 765 kV Gwalior - Agra D/C	WR - NR HVDC V'chal	WR - NR 400 kV Zerda- Kankroli	WR - NR 400 kV Zerda- Bhinmal	WR - NR 220 kV Badod - Kota / Modak	WR - NR 220 kV Auraiya - Malanpur / Mehgaon	WR - NR HVDC Mundra - M'garh	Total WR - NR	ER - NR 765 kV Sasaram - Fatehpur	ER - WR 765 kV Gaya - Fatehpur	ER - WR 400 kV Pusauli - Balua	ER-NR 400 kV Patna - Balua 2xD/C	ER - NR 400 kV Muzaffarpur - G'pur D/C	ER - NR 400 kV B'shariff - Balua D/C	ER - NR HVDC Sasaram (Byepass)	ER - NR 220 kV Pusauli - Sahupuri	ER - NR 132 kV Sahupuri - K'nasa	ER - NR 132 kV Rihand - Son Nagar	Total NR -WR
1-Apr-14	34.20	4.18	0.00	0.00	0.00	0.00	47.79	86.16	0.00	0.00	0.00	4.47	1.77	1.89	8.01	3.77	0.00	0.00	19.91
2-Apr-14	37.34	3.70	0.00	0.00	0.00	0.00	45.76	87.80	0.00	0.00	0.00	3.69	0.84	1.64	9.69	4.10	0.00	0.00	19.97
3-Apr-14	36.31	4.17	0.00	0.00	0.00	0.00	48.33	87.81	0.00	0.00	0.00	5.31	1.08	1.36	9.69	3.96	0.00	0.00	21.41
4-Apr-14	38.97	5.30	0.00	0.00	0.00	0.00	48.34	92.61	0.00	0.00	0.00	4.44	1.93	2.19	9.76	3.96	0.00	0.00	22.28
5-Apr-14	37.19	7.90	0.00	0.00	0.00	0.00	48.33	93.42	0.00	0.00	0.00	5.18	1.53	3.55	9.72	4.53	0.00	0.00	24.50
6-Apr-14	35.30	9.90	0.00	0.00	0.00	0.00	48.34	93.53	0.00	0.00	0.00	2.20	1.19	4.15	9.68	4.52	0.00	0.00	21.74
7-Apr-14	34.46	8.33	0.00	0.00	0.00	0.00	48.24	91.03	0.00	0.00	0.00	2.61	0.00	0.71	9.72	4.80	0.00	0.00	17.84
8-Apr-14	38.17	9.20	0.00	0.00	0.00	0.00	47.42	94.79	0.00	0.00	0.00	1.08	0.00	0.00	6.02	4.49	0.00	0.00	11.59
9-Apr-14	43.29	8.93	0.00	0.00	0.00	0.00	48.34	100.56	0.00	0.00	0.00	4.68	0.00	0.00	9.68	3.65	0.00	0.00	18.01
10-Apr-14	35.16	6.02	0.00	0.00	0.00	0.00	48.34	89.52	0.00	0.00	0.00	4.06	0.00	0.00	9.68	3.68	0.00	0.00	17.42
11-Apr-14	39.41	9.69	0.00	0.00	0.00	0.00	48.34	97.44	0.00	0.00	0.00	4.03	0.00	0.55	8.28	3.75	0.00	0.00	16.61
12-Apr-14	40.60	10.96	0.00	0.00	0.00	0.00	48.34	99.89	0.00	0.00	0.00	8.99	1.34	5.48	7.21	3.88	0.00	0.00	26.90
13-Apr-14	36.44	6.60	0.00	0.00	0.00	0.00	48.33	91.37	0.00	0.00	0.00	7.18	2.51	3.97	7.29	4.26	0.00	0.00	25.22
14-Apr-14	38.69	8.13	0.00	0.00	0.00	0.00	48.34	95.16	0.00	0.00	0.00	7.22	1.98	3.62	4.00	3.66	0.00	0.00	20.47
15-Apr-14	42.01	12.03	0.00	0.00	0.00	0.00	48.34	102.38	2.23	0.00	0.08	9.84	4.74	5.92	1.19	3.97	0.00	0.00	27.97
16-Apr-14	39.10	9.17	0.00	0.00	0.00	0.00	46.76	95.03	4.70	0.00	1.13	11.08	6.29	6.62	0.00	4.02	0.00	0.00	33.84
17-Apr-14	40.45	7.91	0.00	0.00	0.00	0.00	48.34	96.70	3.42	0.00	0.59	10.72	5.01	5.21	0.00	4.06	0.00	0.00	29.02
18-Apr-14	33.39	7.49	0.00	0.00	0.00	0.00	46.15	87.03	1.43	0.00	0.00	7.46	2.29	3.81	0.21	3.81	0.00	0.00	19.01
19-Apr-14	30.08	8.99	0.00	0.00	0.00	0.00	46.50	85.57	1.14	0.00	0.00	8.39	1.19	1.51	2.44	4.05	0.00	0.00	18.72
20-Apr-14	37.97	9.03	0.00	0.00	0.00	0.00	48.32	95.32	0.95	0.00	0.00	6.29	2.25	2.07	3.28	4.59	0.00	0.00	19.42
21-Apr-14	37.97	9.03	0.00	0.00	0.00	0.00	48.32	95.32	0.95	0.00	0.00	6.29	2.25	2.07	3.28	4.59	0.00	0.00	19.42
22-Apr-14	36.31	7.56	0.00	0.00	0.00	0.00	46.27	90.14	0.00	0.00	0.00	7.35	2.84	2.40	8.36	3.64	0.00	0.00	24.58
23-Apr-14	33.76	2.86	0.00	0.00	0.00	0.00	48.33	84.95	0.08	0.00	0.00	6.95	2.34	2.02	9.71	3.59	0.00	0.00	24.69
24-Apr-14	39.23	8.62	0.00	0.00	0.00	0.00	48.33	96.18	0.16	0.00	0.00	8.47	2.44	1.69	9.64	3.74	0.00	0.00	26.14
25-Apr-14	37.02	7.61	0.00	0.00	0.00	0.00	48.33	92.97	0.00	0.00	0.00	9.30	1.59	0.63	9.56	0.00	0.00	0.00	21.08
26-Apr-14	36.97	5.18	0.00	0.00	0.00	0.00	46.01	88.16	0.00	0.00	0.00	9.96	1.94	0.85	9.37	0.00	0.00	0.00	22.12
27-Apr-14	36.62	5.15	0.00	0.00	0.00	0.00	48.33	90.10	0.00	0.00	0.00	10.79	3.38	1.57	9.64	3.86	0.00	0.00	29.24
28-Apr-14	41.29	7.01	0.00	0.00	0.00	0.00	48.33	96.63	0.00	0.00	0.00	8.09	3.14	2.07	9.73	3.77	0.00	0.00	26.80
29-Apr-14	41.37	9.44	0.00	0.00	0.00	0.00	48.35	99.16	0.58	0.00	0.00	7.84	3.00	3.46	9.64	3.76	0.00	0.00	28.28
30-Apr-14	42.37	6.85	0.00	0.00	0.00	0.00	48.34	97.56	0.00	0.00	0.00	5.45	2.00	2.20	9.65	4.14	0.00	0.00	23.44
Total April'14	1131.41	226.93	0.00	0.00	0.00	0.00	1435.93	2794.27	15.63	0.00	1.80	199.41	60.87	73.20	214.12	112.59	0.00	0.00	677.62



Date	12.2 Export of NR to WR & ER during April 2014																		
	Export of NR to WR (NR- WR)								Export of NR to ER (NR- ER)										
	WR - NR 765 kV Gwalior - Agra D/C	WR - NR HVDC V'chal	WR - NR 400 kV Zerda- Kankroli	WR - NR 400 kV Zerda- Bhinmal	WR - NR 220 kV Badod - Kota / Modak	WR - NR 220 kV Auraiya - Malanpur / Mehgaon	WR - NR HVDC Mundra - M'garh	Total WR - NR	ER - NR 765 kV Sasaram - Fatehpur	ER - WR 765 kV Gaya - Fatehpur	ER - WR 400 kV Pusauli - Balua	ER-NR 400 kV Patna - Balua 2xD/C	ER - NR 400 kV Muzaffarpur - G'pur D/C	ER - NR 400 kV B'shariff - Balua D/C	ER - NR HVDC Sasaram (Byepass)	ER - NR 220 kV Pusauli - Sahupuri	ER - NR 132 kV Sahupuri - K'nasa	ER - NR 132 kV Rihand - Son Nagar	Total NR -WR
1-Apr-14	0.00	0.00	5.51	3.83	2.90	1.35	0.00	13.59	1.92	2.36	2.02	0.00	0.00	0.00	0.00	0.00	0.60	6.89	
2-Apr-14	0.00	0.20	5.61	4.14	2.86	1.05	0.00	13.86	2.10	2.43	2.53	0.00	0.00	0.00	0.00	0.00	0.60	7.66	
3-Apr-14	0.00	0.51	5.29	3.69	2.43	1.35	0.00	13.27	1.47	2.00	3.40	0.00	0.00	0.00	0.00	0.00	0.60	7.47	
4-Apr-14	0.00	0.00	5.84	4.26	3.35	1.77	0.00	15.22	0.87	1.41	3.17	0.00	0.00	0.00	0.00	0.00	0.60	6.05	
5-Apr-14	0.00	0.00	6.35	4.97	3.35	1.37	0.00	16.04	2.00	1.78	2.01	0.00	0.00	0.00	0.00	0.00	0.56	6.36	
6-Apr-14	0.00	0.00	7.31	6.42	2.80	1.18	0.00	17.71	2.48	2.27	2.44	0.00	0.00	0.00	0.00	0.00	0.56	7.75	
7-Apr-14	0.00	1.38	6.50	5.05	2.50	1.10	0.00	16.53	3.76	3.32	2.62	0.00	0.12	0.00	0.00	0.00	0.56	10.38	
8-Apr-14	0.00	0.00	5.82	4.22	3.76	0.82	0.00	14.61	3.27	3.17	2.41	0.00	0.54	0.24	0.00	0.00	0.56	10.20	
9-Apr-14	0.00	0.00	5.98	4.36	4.07	0.65	0.00	15.05	4.49	2.83	2.87	0.00	2.43	1.35	0.00	0.00	0.00	13.97	
10-Apr-14	0.00	1.37	6.57	5.14	3.45	1.07	0.00	17.61	3.17	3.35	3.04	0.00	1.67	0.79	0.00	0.00	0.00	12.02	
11-Apr-14	0.00	0.00	5.03	3.94	1.83	0.89	0.00	11.70	2.73	2.85	2.89	0.00	0.35	0.00	0.00	0.00	0.00	8.82	
12-Apr-14	0.00	0.00	5.27	4.59	1.86	0.69	0.00	12.41	1.86	2.51	1.22	0.00	0.00	0.00	0.00	0.00	0.00	5.59	
13-Apr-14	0.00	2.23	6.66	5.49	2.71	0.81	0.00	17.89	3.15	3.35	1.51	0.00	0.00	0.00	0.00	0.00	0.00	8.01	
14-Apr-14	0.00	0.72	6.25	4.80	2.71	0.58	0.00	15.05	1.22	2.30	1.56	0.00	0.00	0.00	0.00	0.00	0.64	5.72	
15-Apr-14	0.00	0.00	5.66	4.11	1.25	0.51	0.00	11.53	0.00	0.81	0.00	0.00	0.00	0.00	0.00	0.00	0.64	1.45	
16-Apr-14	0.00	0.00	5.67	3.92	2.50	0.57	0.00	12.66	0.00	0.05	0.00	0.00	0.00	0.00	11.98	0.00	0.64	12.67	
17-Apr-14	0.00	0.15	6.51	4.53	3.06	0.22	0.00	14.47	0.00	0.65	0.00	0.00	0.00	0.00	9.27	0.00	0.64	10.56	
18-Apr-14	0.00	0.15	5.91	2.95	3.11	0.72	0.00	12.84	0.00	1.37	0.56	0.00	0.00	0.00	3.81	0.00	0.64	6.37	
19-Apr-14	0.00	0.00	6.67	4.82	4.37	0.72	0.00	16.58	0.00	0.63	2.61	0.00	0.00	0.00	0.00	0.00	0.64	3.88	
20-Apr-14	0.00	0.00	6.84	5.32	4.17	0.51	0.00	16.83	0.00	1.20	2.11	0.00	0.00	0.00	0.00	0.00	0.64	3.95	
21-Apr-14	0.00	0.00	6.84	5.32	4.17	0.51	0.00	16.83	0.00	1.20	2.11	0.00	0.00	0.00	0.00	0.00	0.64	3.95	
22-Apr-14	0.00	0.00	7.69	5.89	5.38	0.79	0.00	19.74	0.42	1.07	2.73	0.00	0.00	0.00	0.00	0.00	0.64	4.86	
23-Apr-14	0.00	0.00	7.18	5.58	3.50	0.90	0.00	17.16	0.42	0.77	2.90	0.00	0.00	0.00	0.00	0.00	0.64	4.73	
24-Apr-14	0.00	0.00	5.03	3.62	3.59	0.60	0.00	12.84	0.00	0.72	2.97	0.00	0.00	0.00	0.00	0.00	0.00	3.69	
25-Apr-14	0.00	0.00	6.27	4.60	3.00	0.91	0.00	14.78	1.08	1.27	3.18	0.00	0.00	0.00	0.00	0.00	0.00	5.53	
26-Apr-14	0.00	0.23	6.67	5.06	1.48	1.54	0.00	14.97	1.36	0.77	3.23	0.00	0.00	0.00	0.00	0.00	0.00	5.36	
27-Apr-14	0.00	0.57	5.66	4.02	2.08	0.96	0.00	13.29	0.15	0.88	3.78	0.00	0.00	0.00	0.00	0.00	0.64	5.45	
28-Apr-14	0.00	0.00	5.28	3.75	1.74	0.61	0.00	11.38	0.95	1.27	2.30	0.00	0.00	0.00	0.00	0.00	0.00	4.52	
29-Apr-14	0.00	0.00	4.92	3.07	2.15	0.57	0.00	10.71	0.00	0.14	1.85	0.00	0.00	0.00	0.00	0.00	0.00	1.99	
30-Apr-14	0.00	0.25	3.51	2.21	1.93	1.21	0.00	9.10	0.88	1.38	2.01	0.00	0.00	0.00	0.00	0.00	0.85	5.12	
Total April'14	0.00	7.75	180.30	133.65	88.03	26.51	0.00	436.24	39.73	50.11	66.02	0.00	5.12	2.38	25.06	0.00	0.00	12.54	200.97

12.3 Import - Export of ER with WR & NER during April 2014																				
Date	Export of WR to ER (WR-ER)							Import of WR from ER (ER - WR)							Export of ER to NER (ER - NER)			Import of ER from NER (NER - ER)		
	WR - ER 765 kV Dharamjaygarh - Ranchi D/C	WR - ER 400 kV Sipat - Ranchi D/C	WR - ER 400 kV Raigarh - Sterlite D/C	WR - ER 400 kV Raigarh - Jharsuguda D/C	WR - ER 220 kV Korba - Budhipadar D/C	WR - ER 220 kV Raigarh - Budhipadar	Total WR - ER	WR - ER 765 kV Dharamjaygarh - Ranchi D/C	ER - WR 400 kV Sipat - Ranchi D/C	ER - WR 400 kV Raigarh - Sterlite D/C	ER - WR 400 kV Raigarh - Jharsuguda D/C	ER - WR 220 kV Korba - Budhipadar D/C	ER - WR 220 kV Raigarh - Budhipadar	Total ER - WR	ER - NER 400 kV Binaguri - Bongaigaon D/C	ER - NER 220 kV Birpara - Salakati D/C	Total ER - NER	NER - ER 400 kV Binaguri - Bongaigaon D/C	NER - ER 220 kV Birpara - Salakati D/C	Total NER - ER
1-Apr-14	0.00	8.04	0.00	6.94	0.24	0.00	15.21	0.00	0.00	1.49	0.00	0.11	2.71	4.31	6.58	1.18	7.76	0.00	0.00	0.00
2-Apr-14	1.69	7.30	0.00	7.32	0.70	0.00	17.01	0.00	0.00	1.68	0.00	0.00	2.47	4.15	7.37	1.36	8.73	0.00	0.00	0.00
3-Apr-14	7.83	7.18	0.00	7.32	0.19	0.00	22.52	0.00	0.00	2.35	0.00	0.21	2.84	5.41	8.55	1.74	10.29	0.00	0.00	0.00
4-Apr-14	8.07	6.60	0.00	6.89	0.00	0.00	21.56	0.00	0.00	4.70	0.00	0.13	2.57	7.40	6.96	1.10	8.06	0.00	0.00	0.00
5-Apr-14	0.00	0.00	7.54	7.44	0.00	8.03	23.00	0.00	2.42	0.00	0.00	2.18	0.00	4.60	7.54	1.13	8.67	0.00	0.00	0.00
6-Apr-14	5.47	8.50	0.00	7.60	0.40	0.00	21.97	0.00	0.00	1.50	0.00	0.00	2.43	3.93	7.68	1.55	9.23	0.00	0.00	0.00
7-Apr-14	9.18	7.72	0.00	7.10	0.23	0.00	24.23	0.00	0.00	2.36	0.00	0.00	2.81	5.17	8.68	1.60	10.28	0.00	0.00	0.00
8-Apr-14	4.72	9.23	0.00	7.05	0.60	0.00	21.59	0.00	0.00	2.62	0.00	0.00	2.43	5.05	6.01	1.38	7.39	0.00	0.00	0.00
9-Apr-14	0.00	11.50	0.00	7.78	1.05	0.00	20.34	0.00	0.00	0.82	0.00	0.00	2.24	3.06	6.91	1.37	8.28	0.00	0.00	0.00
10-Apr-14	0.00	12.06	0.00	8.36	1.05	0.00	21.46	0.00	0.00	0.56	0.00	0.00	2.28	2.84	6.08	1.21	7.29	0.00	0.00	0.00
11-Apr-14	0.41	11.84	0.00	7.51	1.80	0.00	21.57	0.00	0.00	0.93	0.00	0.00	2.50	3.43	7.56	1.47	9.03	0.00	0.00	0.00
12-Apr-14	9.74	3.48	0.00	5.47	0.86	0.00	19.54	0.00	0.00	2.29	0.00	0.00	2.73	5.02	7.96	1.46	9.42	0.00	0.00	0.00
13-Apr-14	0.00	0.00	2.29	0.00	0.00	2.73	5.02	0.00	0.00	0.35	0.00	0.00	2.44	2.79	7.03	1.38	8.41	7.96	1.46	9.42
14-Apr-14	11.76	0.69	0.00	7.38	0.70	0.00	20.53	0.00	0.00	0.30	0.00	0.00	2.22	2.52	5.11	1.04	6.14	0.00	0.00	0.00
15-Apr-14	3.06	9.63	0.00	6.19	0.57	0.00	19.44	0.00	0.00	4.03	0.00	0.00	1.74	5.77	6.67	0.00	6.67	0.00	0.00	0.00
16-Apr-14	0.70	10.03	0.00	5.08	1.03	0.00	16.84	0.00	0.00	6.25	0.00	0.00	2.45	8.70	7.35	1.21	8.56	0.00	1.10	1.10
17-Apr-14	2.39	7.40	0.00	3.28	0.14	0.00	13.21	0.00	0.00	5.22	0.00	0.10	2.43	7.75	7.78	1.39	9.17	0.00	0.00	0.00
18-Apr-14	2.77	8.77	0.00	4.81	0.38	0.00	16.72	0.00	0.00	3.52	0.00	0.16	2.76	6.44	7.69	1.26	8.94	0.00	0.00	0.00
19-Apr-14	0.00	0.00	5.22	0.00	0.10	2.43	7.75	0.00	0.00	6.22	0.00	0.03	2.01	8.26	9.61	1.78	11.39	7.78	1.39	9.17
20-Apr-14	5.38	6.69	0.00	4.47	0.20	0.00	16.74	0.00	0.00	5.76	0.00	0.06	2.20	8.02	9.05	1.76	10.81	0.00	0.00	0.00
21-Apr-14	5.15	5.37	0.00	2.84	0.67	0.00	14.03	0.00	0.00	5.63	0.00	0.00	2.43	8.06	8.81	1.78	10.59	0.00	0.00	0.00
22-Apr-14	5.53	5.75	0.00	3.55	0.57	0.00	15.40	0.00	0.00	4.55	0.00	0.00	2.64	7.19	10.18	2.02	12.20	0.00	0.00	0.00
23-Apr-14	5.87	6.10	0.00	3.92	0.30	0.00	16.18	0.00	0.00	6.43	0.00	0.47	3.02	9.92	10.61	2.37	12.98	0.00	0.00	0.00
24-Apr-14	6.68	8.47	0.00	4.48	0.11	0.00	19.74	0.00	0.00	5.70	0.00	0.61	2.97	9.28	9.28	1.95	11.23	0.00	0.00	0.00
25-Apr-14	4.39	4.12	0.00	2.36	0.00	0.00	10.87	0.00	0.00	5.17	0.00	0.38	2.94	8.49	8.65	1.72	10.37	0.00	0.00	0.00
26-Apr-14	1.82	6.11	0.00	2.54	0.00	0.00	10.47	0.00	0.00	8.38	0.00	0.16	2.35	10.89	9.28	1.80	11.08	0.00	0.00	0.00
27-Apr-14	2.02	6.47	0.00	2.31	0.05	0.00	10.85	0.00	0.00	6.68	0.00	0.06	2.03	8.77	7.95	1.97	9.91	0.00	0.00	0.00
28-Apr-14	4.92	5.96	0.00	2.63	0.38	0.00	13.88	0.00	0.00	5.93	0.00	0.00	2.17	8.10	4.86	0.47	5.33	0.00	0.00	0.00
29-Apr-14	3.88	3.91	0.00	1.77	0.44	0.00	10.00	0.00	0.00	7.22	0.00	0.00	2.09	9.31	7.06	0.60	7.66	0.00	0.00	0.00
30-Apr-14	5.50	6.03	0.00	2.43	0.14	0.00	14.09	0.00	0.00	7.22	0.00	0.00	2.09	9.31	7.06	0.60	7.66	0.00	0.00	0.00
Total April'14	118.90	194.94	15.05	146.80	12.90	13.18	501.77	0.00	2.42	115.86	0.00	4.66	70.98	193.92	231.89	41.64	273.52	15.74	3.95	19.69

Date	12.4 Import of SR with ER & WR during April 2014											
	Export of ER to SR (ER - SR)			Import of ER from SR (SR - ER)			Export of WR to SR (WR-SR)			Import of WR from SR (SR - WR)		
	ER - SR HVDC Gazuwaka	ER - SR HVDC Talchar - Kolar	Total ER - SR	SR - ER HVDC Gazuwaka	SR - ER HVDC Talchar - Kolar	Total SR - ER	WR - SR HVDC Bhadrawati	WR - SR 765 kV Sholapur - Raichur	Total WR - SR	SR - WR HVDC Bhadrawati	SR - WR 765 kV Raichur - Sholapur	Total SR - WR
1-Apr-14	18.63	44.77	63.39	0.00	0.00	0.00	23.56	2.00	25.56	0.00	1.20	1.20
2-Apr-14	18.63	45.34	63.98	0.00	0.00	0.00	23.42	1.85	25.28	0.00	0.86	0.86
3-Apr-14	18.63	47.80	66.43	0.00	0.00	0.00	22.81	1.54	24.35	0.00	1.78	1.78
4-Apr-14	18.64	47.37	66.01	0.00	0.00	0.00	23.09	2.89	25.99	0.00	0.84	0.84
5-Apr-14	18.64	46.31	64.95	0.00	0.00	0.00	23.18	2.92	26.10	0.00	0.63	0.63
6-Apr-14	18.62	46.83	65.45	0.00	0.00	0.00	22.15	2.56	24.71	0.00	1.00	1.00
7-Apr-14	18.59	46.90	65.50	0.00	0.00	0.00	23.52	3.73	27.25	0.00	0.32	0.32
8-Apr-14	18.59	47.91	66.50	0.00	0.00	0.00	23.69	2.88	26.57	0.00	0.50	0.50
9-Apr-14	18.10	44.43	62.53	0.00	0.00	0.00	23.60	3.93	27.53	0.00	0.44	0.44
10-Apr-14	18.66	44.26	62.93	0.00	0.00	0.00	23.69	3.13	26.82	0.00	0.71	0.71
11-Apr-14	18.64	42.40	61.04	0.00	0.00	0.00	23.66	3.04	26.70	0.00	0.82	0.82
12-Apr-14	18.65	40.01	58.66	0.00	0.00	0.00	23.64	3.09	26.73	0.00	0.36	0.36
13-Apr-14	13.99	45.20	59.19	0.00	0.00	0.00	23.53	3.76	27.28	0.00	0.37	0.37
14-Apr-14	17.26	57.80	75.06	0.00	0.00	0.00	23.57	3.54	27.11	0.00	0.74	0.74
15-Apr-14	16.10	57.78	73.88	0.00	0.00	0.00	23.56	2.99	26.55	0.00	0.65	0.65
16-Apr-14	17.78	60.81	78.59	0.00	0.00	0.00	23.51	2.73	26.25	0.00	1.11	1.11
17-Apr-14	15.94	56.93	72.87	0.00	0.00	0.00	23.06	2.10	25.15	0.00	1.25	1.25
18-Apr-14	12.82	57.51	70.33	0.00	0.00	0.00	21.94	2.98	24.92	0.00	0.65	0.65
19-Apr-14	16.31	60.21	76.52	0.00	0.00	0.00	22.53	2.89	25.42	0.00	0.69	0.69
20-Apr-14	18.67	62.64	81.31	0.00	0.00	0.00	22.15	1.70	23.85	0.00	1.20	1.20
21-Apr-14	18.10	44.87	62.97	0.00	0.00	0.00	21.44	2.35	23.79	0.00	1.78	1.78
22-Apr-14	16.86	47.09	63.94	0.00	0.00	0.00	23.37	1.89	25.26	0.00	1.60	1.60
23-Apr-14	18.06	43.03	61.09	0.00	0.00	0.00	23.43	2.25	25.68	0.00	0.92	0.92
24-Apr-14	18.76	38.68	57.43	0.00	0.00	0.00	23.47	1.51	24.98	0.00	1.27	1.27
25-Apr-14	18.41	43.51	61.92	0.00	0.00	0.00	22.54	1.05	23.58	0.00	2.10	2.10
26-Apr-14	18.09	41.24	59.33	0.00	0.00	0.00	20.14	0.98	21.12	0.00	3.00	3.00
27-Apr-14	18.57	39.91	58.48	0.00	0.00	0.00	23.63	1.00	24.63	0.00	3.39	3.39
28-Apr-14	18.74	40.42	59.16	0.00	0.00	0.00	23.11	4.01	27.12	0.00	1.71	1.71
29-Apr-14	18.69	39.54	58.23	0.00	0.00	0.00	23.38	3.24	26.63	0.00	2.48	2.48
30-Apr-14	18.41	38.35	56.76	0.00	0.00	0.00	23.57	4.34	27.91	0.00	1.62	1.62
<b>Total April'14</b>	<b>534.56</b>	<b>1419.85</b>	<b>1954.41</b>	<b>0.00</b>	<b>0.00</b>	<b>0.00</b>	<b>691.96</b>	<b>78.84</b>	<b>770.80</b>	<b>0.00</b>	<b>35.99</b>	<b>35.99</b>

**13. भूटान ,नेपाल एवं बांग्लादेश के साथ अंतरराष्ट्रीय विद्युत विनिमय  
INTERNATIONAL EXCHANGE WITH BHUTAN, NEPAL AND BANGLADESH**

**अप्रैल 2014 APRIL 2014**

अंतरराष्ट्रीय विद्युत विनिमय [भारत से दूसरे देश को आयात (+) / निर्यात (-)]  
Transnational Exchange (Import=(+ve) /Export =(-ve))

माह MONTH	भूटान BHUTAN	नेपाल NEPAL	बांग्लादेश BANGLADESH
	Energy Exchange (In MU)	Energy Exchange (In MU)	Energy Exchange (In MU)
अप्रैल 2014 APR'14	78.02	-79.85	-276.56
कुल Total	78.02	-79.85	-276.56

**14. एसटीओए (द्विपक्षीय एवं सामूहिक) एवं डी एस एम बिलिंग का ब्योरा – माह अप्रैल 2014  
STOA (BILATERAL AND COLLECTIVE) & DSM BILLING DETAILS- APR' 2014**

**द्विपक्षीय एसटीओए BILATERAL SHORT TERM OPEN ACCESS**

क्षे.भा.प्रे.के. का नाम Name of RLDC	अप्रैल 2014 Apr'14		Apr'14- Apr'14	
	लेन – देनों की संख्या No. of Transactions	अनुमोदित ऊर्जा (मि.यु.) Energy Approved(MU)	लेन – देनों की संख्या No. of Transactions	अनुमोदित ऊर्जा (मि.यु.) Energy Approved (MU)
ऊ.क्षे. NR	237	900	237	900
प.क्षे. WR	171	567	171	567
द.क्षे. SR	205	1159	205	1159
पू.क्षे. ER	142	1059	142	1059
पूर्वात्तर क्षे. NER	28	80	28	80
कुल TOTAL	783	3765	783	3765

**एसटीओए SHORT TERM OPEN ACCESS**

माह MONTH	सामूहिक एसटीओए STOA		द्विपक्षीय एसटीओए Bilateral STOA	
	क्रेताओं / विक्रेताओं की सं. NO. of Buyers/Sellers	अनुमोदित ऊर्जा (मि.यु.) Approved Energy (MU)	क्रेताओं / विक्रेताओं की सं. NO. of Buyers/Sellers	अनुमोदित ऊर्जा (मि.यु.) Approved Energy (MU)
अप्रैल 2014 APR'14	2015	2143	783	3765
कुल TOTAL	2015	2143	783	3765

मासिक यु.आई. बिलिंग का ब्योरा 2014-15  
MONTHLY UI BILLING DETAILS 2014-15

अनंतिम आकड़े  
provisional data subject to change

करोड़ रु. में (RS. IN CRORES)

क्षेत्र REGION	उत्तरी क्षेत्र NORTH	पश्चिमी क्षेत्र WEST	पूर्वी क्षेत्र EAST	दक्षिणी क्षेत्र SOUTH	पूर्वात्तर क्षेत्र NORTH EAST	अखिल भारतीय स्तर ALL INDIA
31 Mar- 27 Apr 2014	228	184	145	38	30	624

**15. पावर मार्केट की सूचना ( स्रोत : आई.ई.एक्स. एवं पी.एक्स.आई.एल.)**  
**POWER MARKET INFORMATION ( Source IEX & PXIL)**  
**पावर एक्सचेंज के माध्यम से विनिमय – माह अप्रैल 2014**  
**EXCHANGES THROUGH POWER EXCHANGES -APR'2014**

क्र. स. S. No.	क्षेत्रीय ईकाई Regional Entity	क्षेत्र Region	पावर एक्सचेंज के माध्यम से ( मि.यु. मे) Through Power Exchange in MU	
			विक्रय Sale	क्रय Purchase
1	पंजाब Punjab	उत्तरी क्षेत्र NR	11.36	96.65
2	हरियाणा Haryana		211.82	189.01
3	राजस्थान Rajasthan		116.27	193.23
4	दिल्ली Delhi		129.99	18.08
5	उत्तर प्रदेश Uttar Pradesh		0.00	74.58
6	उत्तराखंड Uttarakhand		0.69	62.46
7	हिमाचल प्रदेश Himachal Pradesh		122.47	5.27
8	जम्मू और कश्मीर J & K		9.91	4.75
9	केंद्र शासित चंडीगढ़ UT Chandigarh		0.00	0.00
10	ए डी हाइड्रो AD Hydro		18.50	0.00
11	करचम वांगतू KW		80.87	0.00
12	श्री सीमेंट Shree Cement		60.60	0.00
13	नाथपा झाकरी Nathpa Jhakri		6.87	0.00
14	बैरासूल Baira Siul HEP(BS0)		0.00	0.00
15	चमेरा -1 Chamera-I HEP(CM1)		0.00	0.00
16	चमेरा -2 Chamera-II HEP(CM2)		0.00	0.00
17	धौलीगंगा Dhauliganga HEP(DG0)		0.00	0.00
18	धौलीगंगा Dulahasti HEP(DU0)		0.00	0.00
19	सलाल Salal HEP(SL0)		0.00	0.00
20	सेवा -2 Sewa-II NHPC(SW2)		0.00	0.00
21	टनकपुर Tanakpur HEP(TP0)		0.00	0.00
22	उरी Uri HEP(UR0)		0.00	0.00
23	लांको बुधिल LANCO Budhil		18.98	0.00
24	चमेरा-3 chamera 3		0.00	0.00
25	अदानी एचवीडीसी ADANI HVDC(NORGU0)		0.00	0.00
26	मलाना MALANA	0.95	0.00	
27	उरी-II Uri-II HEP(UR2)	0.00	0.00	
28	मध्य प्रदेश MP	पश्चिमी क्षेत्र WR	180.17	39.83
29	महाराष्ट्र Maharashtra		7.32	162.48
30	गुजरात Gujarat		289.28	320.92
31	छत्तीसगढ़ Chattisgarh		50.01	14.98
32	गोवा Goa		0.00	1.42
33	दमन और दीव Daman and Diu		0.00	30.38
34	दादरा और नगर हवेली Dadra & Nagar Haveli		0.00	0.00
35	जिंदल JD		14.01	0.00
36	लांको अमरकंटक LANCO AMK		0.00	0.00
37	आर्यन कोल ACB India Limited		43.02	0.00
38	जिंदल स्टील एंड पावर Jindal Steel and Power Ltd		61.26	0.00
39	बालको -2 Balco-II		4.62	0.00
40	स्टरलाइट Sterlite(w3rse0)		105.76	0.00
41	एमको EMCO		4.90	0.00
42	वन्दना विद्युत VANDANA VIDYUT		4.11	0.00
43	एस्सार पावर ESSAR POWER		0.00	0.00
44	एस्सार स्टील ESSAR STEEL		0.00	218.72
45	के एस के महानदी KSK Mahanadi		0.00	0.00
46	जिंदल स्टेज -II Jindal Stg-II		115.40	0.00

15. पावर मार्केट की सूचना ( स्रोत : आई.ई.एक्स. एवं पी.एक्स.आई.एल.)  
**POWER MARKET INFORMATION ( Source IEX & PXIL)**  
 पावर एक्सचेंज के माध्यम से विनिमय – माह अप्रैल 2014  
**EXCHANGES THROUGH POWER EXCHANGES -APR'2014**

क्र. स. S. No.	क्षेत्रीय ईकाई Regional Entity	क्षेत्र Region	पावर एक्सचेंज के माध्यम से (मि.यु. मे) Through Power Exchange in MU	
			विक्रय Sale	क्रय Purchase
47	आंध्र प्रदेश Andhra Pradesh	दक्षिणी क्षेत्र SR	25.57	190.55
48	कर्नाटक Karnataka		4.03	1.75
49	केरल Kerala		0.00	0.00
50	तमिलनाडु Tamilnadu		0.00	0.00
51	पॉण्डिचेरी Pondicherry		0.00	0.00
52	गोवा Goa		0.00	0.00
53	लांको कोंडापल्ली LANCO_KONDPLY		0.00	0.00
54	सिमापुरी SIMHAPURI		11.25	0.00
55	मीनाक्षी MINAXI		0.19	0.00
56	पश्चिम बंगाल West Bengal		पूर्वी क्षेत्र ER	1.45
57	उड़ीशा Odisha	79.01		2.74
58	बिहार Bihar	0.00		266.50
59	झारखंड Jharkhand	0.00		0.00
60	सिक्किम Sikkim	19.33		0.00
61	दामोदर घाटी परियोजना DVC	41.40		0.00
62	स्टरलाइट STERLITE	0.00		0.00
63	मैथन पावर लिमिटेड Maithon Power Ltd	25.18		0.00
64	आधुनिक पावर लिमिटेड Adhunik Power Ltd	0.00		0.00
65	चुजाचेन Chuzachen HEP	15.63		0.00
66	रंगित Rangit HEP	0.00		0.00
67	जीएमआर कमलंगा GMR Kamalanga	0.00		0.00
68	तीस्ता Teesta HEP	176.66		0.00
69	अरुणाचल प्रदेश Arunachal Pradesh	0.00		2.51
70	असम Assam	0.88		57.95
71	मणिपुर Manipur	0.00		0.00
72	मेघालय Meghalaya	2.69		23.55
73	मिज़ोरम Mizoram	0.73		0.00
74	नागालैंड Nagaland	0.00	1.05	
75	त्रिपुरा Tripura	24	0.00	
76	अगरतला जीटीपीपी Agartala GTPP_AG0	5	0.00	
77	कोपिली KOPILI_KP1	0	0.00	
78	असम जीबीपीपी Assam GBPP_KT0	16	0.00	
79	लोकटक LOKTAK	1	0.00	
80	रंगानदी Ranganadi	4	0.00	
81	दोयांग Doyang	0	0.00	
82	पलाताना Palatana	19	0.00	
कुल Total			2143	2143

## **16. RENEWABLE ENERGY CERTIFICATE MECHANISM**

**MONTH:-APRIL 2014**

### **RE Source & Unit wise break up (April,14)**

<b>Sr.No</b>	<b>Source Wise</b>	<b>Accreditation</b>		<b>Registration</b>	
		<b>Capacity (MW)</b>	<b>Unit</b>	<b>Capacity (MW)</b>	<b>Unit</b>
1	Wind	23.7	4	6.9	2
2	Urban or Municipal Waste	0	0	0	0
3	Solar Thermal	0	0	0	0
4	Solar PV	19.26	14	42.14	21
5	Small Hydro	10.48	2	52.5	5
6	Others	0	0	0	0
7	Geothermal	0	0	0	0
8	Biomass	0	0	0	0
9	Bio-fuel cogeneration	16.63	3	0	0
	<b>Total</b>	<b>70.07</b>	<b>23</b>	<b>101.54</b>	<b>28</b>

### **RECs Issued (April,14)**

<b>Sr.No.</b>	<b>Non Solar</b>	<b>Solar</b>	<b>Total</b>
1	1070344	43733	1114077

### **Redemption of REC (April,14)**

<b>Sr.No.</b>	<b>Non Solar</b>	<b>Solar</b>	<b>Total</b>
1	79354	989	80343



## **16. RENEWABLE ENERGY CERTIFICATE MECHANISM**

**MONTH:-APRIL 2014**

### **RE Source & Unit wise break up (Apr,14-Apr,14)**

<b>Sr.No</b>	<b>Source Wise</b>	<b>Accreditation</b>		<b>Registration</b>	
		<b>Capacity (MW)</b>	<b>Unit</b>	<b>Capacity (MW)</b>	<b>Unit</b>
1	Wind	23.7	4	6.9	2
2	Urban or Municipal Waste	0	0	0	0
3	Solar Thermal	0	0	0	0
4	Solar PV	19.26	14	42.14	21
5	Small Hydro	10.48	2	52.5	5
6	Others	0	0	0	0
7	Geothermal	0	0	0	0
8	Biomass	0	0	0	0
9	Bio-fuel cogeneration	16.63	3	0	0
	<b>Total</b>	<b>70.07</b>	<b>23</b>	<b>101.54</b>	<b>28</b>

### **RECs Issued (Apr,14-Apr,14)**

<b>Sr.No.</b>	<b>Non Solar</b>	<b>Solar</b>	<b>Total</b>
1	1070344	43733	1114077

### **Redemption of REC (Apr,14-Apr,14)**

<b>Sr.No.</b>	<b>Non Solar</b>	<b>Solar</b>	<b>Total</b>
1	79354	989	80343

## **16. RENEWABLE ENERGY CERTIFICATE MECHANISM**

**MONTH:-APRIL 2014**

### **RE Source & Unit wise break up Since Inception to Apr,14**

Sr.No	Source Wise	Accreditation		Registration	
		Capacity (MW)	Unit	Capacity (MW)	Unit
1	Wind	2365.43	615	2145.08	567
2	Urban or Municipal Waste	16	2	8	1
3	Solar Thermal	3	1	0	0
4	Solar PV	472.28	216	411.02	185
5	Small Hydro	310.99	35	255.51	28
6	Others	1.67	1	1.67	1
7	Geothermal	0	0	0	0
8	Biomass	693.36	74	641.46	67
9	Bio-fuel cogeneration	853.3	89	738.07	81
	<b>Total</b>	<b>4716.02</b>	<b>1033</b>	<b>4200.8</b>	<b>930</b>

### **RECs Issued since Inception to Apr,14**

Sr.No.	Non Solar	Solar	Total
1	12859496	264764	13124260

### **Redemption of REC since Inception to Apr,14**

Sr.No.	Non Solar	Solar	Total
1	6352867	81682	6434549

### **REC Closing balance as on 30.04.2014**

Sr.No.	Non Solar	Solar	Total
1	6506629	183082	6689711

**17.माह अप्रैल 2014 की मुख्य घटनाये / डिस्टर्बेन्सेज Important Events / Disturbances April 2014**

A	B		C	D	E	F	G	H		I
S.NO.	Outage		Region	Name of tripping elements	Owner / Agency	Event	Generation/Load Loss	Revival		Category as per CEA Grid Standards
	Date	Time						Date	Time	
1	03.04.14	1610 hrs	SR	1). 400kV Gooty-Raichur D/C 2). 400kV Gooty-Nellore PS D/C 3). 400kV Gooty-Kurnool (AP)Line 4). 400kV Gooty-Kurnool (PG) Line 5). 400/220kV ICT-1 &2 at Gooty S/S	PG/AP	In 400 kV Gooty-Raichur-I line B-Phase CT blasted. This caused a Bus fault and Bus-bar protection of both bus-I & II operated at Gooty S/S due to which given element in Coulum D got tripped.	----	03.04.14	1644 hrs	GI-II
2	07.04.14	0211 hrs	ER	1). 220kV Dhubri-New Dhubri D/C 2). 220kV Dhubri-Meramundali D/C 3). 220kV Baripada-Balasore D/C 4). 132kV Dhubri-Talcher D/C 5). 100MVA 220/132kV ICT-I & II at Dhubri	OPTCL	Due to snnaping of B-Phase Jumper of 220kV Dhubri-Meramundali-I, given element in coulum D got tripped	Load Loss=480MW	07.04.14	0342 hrs	GD-I
3	08.04.14	2204 hrs	NER	1). 400kV Silchar-Byrnihat S/C 2). 400kV Silchar-Pallatana D/C 3). 132kV Badarpur-Khlieriat S/C 4). 132kV Jiribam-Halflong S/C 5). 132kV Jiribam Loktak –II Ckt 6). 132kV Jiribam-Aizwal S/C 7). 132kV Loktak-Imphal S/C 8). 132kV Loktak-Ningthoukhong S/C 9). Pallatana Generation(GTG-I and STG-I) 10). Loktak Generation 11). RC Nagar Generation	NETCL/OTPC	Due to heavy rain alongwith thunderstorm and lightning in NER and also Y ph to earth fault in 400 KV Silchar-Byrnihat line, element given in coulum D got tripped.	Load Loss=335MW Gen Loss=517MW	08.04.14	2301 hrs	GD-III
4	09.04.14	0541 hrs	NR	1). 220kV Harduaganj-Hathras Line 2). 220kV Harduaganj-Mainpuri Line 3). 220kV Harduaganj-Atrauli Line 4). 220kV Harduaganj-Khurja-D/C 5). 220kV Harduaganj-Etah line 6). Unit#8,9 at Harduagnaj TPS	UPPTCL	Due to failure of R-Phase jumper of C-Isolator of 220kV Harduaganj-Hathras line at Harduaganj TPS, resulting in tripping of all the 220 KV lines and Generators at Harduaganj.	Load Loss=407MW Gen Loss=450MW	09.04.14	0820 hrs	GD-I
5	09.04.14	2140 hrs	NR	1). 220kV Panipat TPS-Panipat I,II,III &IV 2). 220kV Panipat-Narela-I,II &III 3). 220kV Panipat-Dhulkote-D/C 4). 220kV Panipat- Krukshetra line	HVPNL/BBMB	Due to Faliure of Y-Phase CT of Bus Coupler at Panitpat (BBMB) S/S, Bus Bar Protection operated and given element in Coulum D got tripped.	Load Loss=220MW	09.04.14	2256 hrs	GD-I
6	09.04.14	1220 hrs	WR	1). 220kV Mapusa-Tivim D/C 2). 220kV Mapusa-Ponda D/C 3). 400/220kV ICT- at Mapusa	GED/PG	Due to Bus bar protection operation at Mapusa S/S ,given element in Coulum D got tripped	Load Loss=180MW	09.04.14	1250 hrs	GD-I

**17.माह अप्रैल 2014 की मुख्य घटनाये / डिस्टर्बेन्सेज Important Events / Disturbances April 2014**

A	B		C	D	E	F	G	H		I
S.NO.	Outage		Region	Name of tripping elements	Owner / Agency	Event	Generation/Load Loss	Revival		Category as per CEA Grid Standards
	Date	Time						Date	Time	
7	13.04.14	1304 hrs	ER	1). 220/132kV ICT-I,II at Bokaro S/S 2). 220kV Bokaro -Rangarh D/C 3). 220kV Bokaro-j'pur(DVC) 4). Bokaro B Generation	DVC	Due to sharp voltage Collapse at BTPS end (there is no any relay indication of fault) , elements given in coulum D got tripped	Load Loss=342MW Gen Loss=170MW	13.04.14	1402 hrs	GD-I
8	14.04.14	0902 hrs	NR	1). 400kV Sarnath-Anpara D/c 2). 400kV Sarnath-Pusauli line 3). 400kV Sarnath-Allahabad Line 4). 400kV Sarnath- Azamgarh line 5). 400kV Anpara-Mau line 6). 220 KV Sarnath-Gazipur 7). 220 KV Sarnath-Sahupuri 8). 220 KV Sarnath-Gajokhar 9). 400/220kV 315MVA ICT-I,II at Sarnath	PG/UPPTCL	Due to B-Phase to Earth fault in 400kV Sarnath-Azamgarh line, while online relay testing work was being carried out at Sarnath (UP)substation elements given in coulum D got tripped.	Load Loss=300MW	14.04.14	1026 hrs	GD-I
9	16.04.14	0640 hrs	NR	1). 220kV Nabha-Balwan ckt 2). 220kV Nabha -Faggan Majra -I &II 3). 220kV Patiala(PG)-Rajpura(PSEB) line 4). 220kV Nabha-Dhuri line 5). NPL Unit#1 (Hand tripped) (700MW)	PSEB/L&T	Due to failure of B-phase CT and breaker limb at Nabha S/S, given lines in coulum D got tripped.	Gen Loss=700MW	16.04.14	1750 hrs	GD-I
10	17.04.14	2326 hrs	NR	1). 400kV Jodhpur-Kankroli-I line 2). 400kV Jodhpur-Rajwest D/C 3). 400kV Barmer-Rajwest -I line 4). 400kV Merta-Jodhpur-I line 5). 400kV Akal-Jodhpur line 6). 400kV Akal-Barmer-I line 7). Rajwest(IPP) LTPS Unit#3,4,5,6,7 &8 (135MW each)	PG/RRVNL	Bus Bar protection operated at 400kV Jodhpur S/S due to damage of post insulator of 400kV main Bus-B in 400kV Merta-I Bay.	Gen Loss=600MW	18.04.14	0355 hrs	GD-I
11	22.04.14	1109 hrs	ER	1).220kV Chandil-Ranchi D/C 2). 220kV Chandil -Santaldih S/C 3). 220kV Chandil-Ramchandrapur S/C	JSEB	Due to LBB operation at 220kV Chandil S/S, all lines got tripped.	Load Loss=290MW	22.04.14	1204 hrs	GD-I
12	23.04.14	1757 hrs	ER	1).220kV Bidhannagar-Santaldih 2). 220kV Bidhannagar-Waria-D/C 3). 220kV Bidhannagar-DPL D/C 4). 220kV Bidhannagar-Bakreshwar-I 5). 400/220kV,160MVA ICT-I,II&III at Bidhannagar 6).Unit#7 at DPL	WBSEB	Due to Bus fault at 220kV Bidhannagar S/S, elements given in coulum D got tripped.	Load Loss=298MW Gen Loss=170MW	23.04.14	1855 hrs	GD-I
13	25.04.14	1144 hrs	ER	1). 220kV Therubali-Bhanjnagar D/C 2). 220kV Therubali-Indravati Q/C 3). 220kV Therubali-Narendrapur D/C 4). 220kV Therubali-Jaynagar D/C 5). 220kV Therubali-U.Kolab S/C 6). 220/132kV 100MVA ICT-I,II &III at Therubali	OPTCL	R-Phase to ground fault occurred at 220kV Therubali-Narendrapur-I but main CB at Therubali end failed to open, due to which Earth fault protection at Theubali end operated and elements given in Coulum D got tripped.	Load Loss=130MW	25.04.14	1230 hrs	GD-I
14	27.04.14	0604 hrs	ER	1).132kV Purnea-Forbisgunj S/C 2).132kV Purnea(PG)-Purnea(BSEB) T/C	BSEB	Due to R-ph to ground fault at 132kV Purnea-Forbisgunj S/C, elements given in Coulum E got tripped.	Load Loss=80MW	27.04.14	0655 hrs	GD-I
15	27.04.14	1020 hrs	ER	1). 220kV Tenughat-Patratu S/C 2). UNIT# I&II(2x210MW) at Tenughat	TVNL/JSEB	Due to B-phase to earth fault in 220kV Tenughat S/S, elements given in coulum D got tripped. While 220kV Tenughat-Biharsharif was already out.	Gen Loss=225MW	27.04.14	1233hrs	GD-I

**17.माह अप्रैल 2014 की मुख्य घटनाये / डिस्टर्बेन्सेज Important Events / Disturbances April 2014**

A	B		C	D	E	F	G	H		I
S.NO.	Outage		Region	Name of tripping elements	Owner / Agency	Event	Generation/Load Loss	Revival		Category as per CEA Grid Standards
	Date	Time						Date	Time	
16	27.04.14	1202 hrs	ER	1). 220kV Tenughat-Biharsharif S/C 2).220kV Biharsharif-Patna S/C 3). 220kV Biharsharif-Bodhgaya D/C 4).220kV Biharsharif-Tenughat S/C 5).220kV Biharsharif-Fatua S/C 6). 400/220kV ICT-I,II &III at Biharsharif	JSEB/BSEB	While Charging 220kV Tenughat-Biharsharif S/C all ICTs at Biharsharif tripped, resulting in tripping of all 220kV network at Biharsharif.	Load Loss=350MW	27.04.14	1233 hrs	GD-I
17	27.04.14	1540 hrs	ER	1). 132kV Biharsharif-Hatia S/C 2). 220/132kV,150MVA ICT-I&II at Biharsharif	BSEB	Due to Jumper snapping of 132kV Biharsharif-Hatia line, element given in coulum D got tripped.	Load Loss=150MW	27.04.14	1609 hrs	GD-I
18	27.04.14	1756 hrs	WR	1). 220kV Indore(MP)-Dewas S/C 2). 220kV Indore(MP)-Indore D/C 3). 220kV Indore(MP)-Indore STG-2 D/C 4). 220kV Indore(MP)-Indore-SZ D/C 5). 220kV Indore(MP)-Burwah D/C 6). 220kV Indore(MP)-Pithampur S/C 7). 220kV Indore(MP)-Badnagar S/C 8). 400/220 kV ICT-III &IV at Indore(MP)	MPPTCL	Due to failure of Y-Phase CT of 220kV Indore(MP)-Indore line, element given in coulum D got tripped.	Load Loss=500MW	27.04.14	1827 hrs	GD-I
19	28.04.14	0007 hrs	NER	1)400kV Silchar-Pallatana D/C 2)400kV Silchar-Byrnihat S/C 3)132kV Khondong-Haflong S/C 4)132kV Badarpur-Khliehriat 5)132kV PK Bari-Ambassa 6)132kV Dimapur Imphal 7)132kV Jiribam-Loktak 8)132kV Jiribam-Haflong line 9)Pallatana Generation	NER/OTPC	Multiple tripping occurred in NER which started with the tripping of 400 kV Palatana-Silchar-I(it appears from PMU plot that Fault was in B-Phase). Due to the Palatana Generation tripping, SPS-I operated causing load relief. Further tripping of few lines caused separation of Tripura from rest of grid and Tripura(islanded) survived with RC Nagar generation.	Load Loss=139MW Generation Loss=320 MW	28.04.14	0106 hrs	GD-II
20	29.04.14	1133 hrs	NR	1)400kV Chabra-Hindaun 2) 400kV Chabra-Bhilwara 3)400kV Chabra-Kawai(Adani) 4) 400kV Hindaun-Heerapura 5) 220kV Chabra-Kawai 6) 220kV Chabra-Jhalawar 7)Chabra TPS Unit #1&2 8)Kawai(ADANI) TPS Unit #1	PG/Adani/RVU PNL	Due to tripping of 400 kV Heerapura-Hindaun on distance protection , multiple tripping occurred in Kawai, Chabra and adjoining sub stations.	Load Loss=180MW Generation Loss=1100 MW	29.04.14	1211 hrs	GD-I
21	30.04.14	1201 hrs	NR	1)400kV Chabra-Hindaun 2) 400kV Chabra-Bhilwara 3) 400kV Chabra-Kawai(Adani) 4) 400kV Hindaun-Heerapura 5) 220kV Chabra-Kawai 6)220kV Chabra-Jhalawar 7)Chabra TPS Unit #1&2 8)Kawai(ADANI) TPS Unit #1 9)Kalisindh TPS Unit-1	PG/Adani/RVU PNL	400kV Heerapura-Hindaun ckt tripped on R-phase to ground fault.400kV Chabra-Hindaun ckt tripped on R-phase to ground fault.Kawai reported that its machine observed some oscillation and 400kV Chabra-Kawai line tripped from Chabra end on over voltage protection.Tripping also occurred in 220kV section of Chabra, Kawai, Jhalawar	Load Loss=200MW Generation Loss=1139 MW	30.04.14	1616 hrs	GD-I

\*DVC= Damodar valley Corporation

\*UPPTCL=Uttar Pradesh Power transmission corporation Ltd.

\*RRVNL= Rajasthan Rajya Vidyut prasaran nigam Ltd.

\*PSEB=Punjab state elctricity Board

\*L&T=Larsen and tubro

\*NPL=Nabha power Ltd.

\*TVNL=Tenughat Vidyut nigam Ltd.

\*JSEB=Jharkhand State electricity Board

**18. NEW ELEMENTS COMMISSIONED in APRIL-2014**

**COMMISSIONING OF NEW GENERATING UNITS**

REGION	SL. NO.	CONSTITUENT	UNIT NAME	UNIT NO	CAPACITY (MW)	DATE	TIME
WR	1	IPP (Dhariwal Infrastructure Ltd.)	DHARIWAL	II	300	21.04.14	-

**COMMISSIONING OF NEW TRANSMISSION LINES**

REGION	SL. NO.	CONSTITUENT	LINE NAME	CKT NO	KV	DATE	TIME
WR	1	MSETCL	AKOLA(1)-AKOLA(2)	I	400	18.04.14	1517
	2	PGCIL	LILO OF BHADRAWATI-PARLI-II at DHARIWAL	II	400	21.04.14	0151
	3		AURANGABAD(PG)-AURANGABAD(MSETCL)	I	400	27.04.14	2300
	4		AURANGABAD(PG)-AURANGABAD(MSETCL)	II	400	28.04.14	0152
	5		AKOLA(MSETCL)-AURANGABAD(PG)	I	400	28.04.14	0135
SR	1		PGCIL	NELLORE-THIRUVALAM	1	400	14.04.14
	2	NELLORE-THIRUVALAM		2	400	14.04.14	-
	3	TANTRANSCO	LILO OF ARASUR - INGUR LINE at KARAMADAI	-	230	19.04.14	-

\*Charged on 400 kV level

**COMMISSIONING OF NEW ICTS**

REGION	SL. NO.	CONSTITUENT	STATION NAME	KV RATIO	CAPACITY (MVA)	DATE	TIME
SR	1	APTRANSCO	SATTENAPALLI	400/220	315	23.04.14	1821

**COMMISSIONING OF BUS REACTORS**

REGION	SL.NO.	CONSTITUENT	STATION NAME	KV	CAPACITY (MVAR)	DATE	TIME
WR	1	PGCIL	DHARAMJAI GARH	765	330	16.04.14	1930
	2		AURANGABAD	400	125	28.04.14	2052

**COMMISSIONING OF LINE REACTORS**

REGION	SL. NO.	CONSTITUENT	STATION NAME	LINE NAME	KV	CAPACITY (MVAR)	DATE	TIME
WR	1	PGCIL	SEONI	SEONI-WARDHA-I	765	240 (3x80)	30.04.14	2107
	2		DHARAMJAYGARH	DHARMJAYGARH-NEW RANCHI-I	765	*330(3x110)	16.04.14	-
SR	1		NELLORE	NELLORE-THIRUVALAM-I	400	63	14.04.14	-
	2		THIRUVALAM	NELLORE-THIRUVALAM-I	400	63	14.04.14	-
	3	THIRUVALAM-NELLORE-I		400	63	14.04.14	-	
	4		THIRUVALAM-NELLORE-I	400	63	14.04.14	-	

**COMMISSIONING OF NEW SUBSTATIONS**

REGION	SL. NO.	CONSTITUENT	STATION NAME	KV RATIO	CAPACITY (MVA)	DATE	TIME
SR	1	PGCIL	KARAMADAI - 1	230/110	110	19.04.14	-

**19.विद्युत विभव रूपरेखा माह –अप्रैल 2014**  
**VOLTAGE PROFILE - APRIL 2014**

क्र.स. Sl. No.	क्षेत्र REGION	उपकेंद्र SUBSTATION	VOLTAGE < V(lower)* (V=122,380,728 kV)	V(lower) < VOLTAGE < V(upper)*	VOLTAGE > V(upper)* (V=145, 420, 800 kV)	उच्चतम (कि.वो.) Maximum (kV)	निम्नतम (कि.वो.) Minimum (kV)	औसत (कि.वो.) Average (kV)
1	पूर्वी क्षेत्र ER	फरक्का FARAKKA	0%	100%	0%	420	405	413
2		कहलगांव KAHALGAON	0%	71%	29%	425	409	418
3		तालचर TALCHER	0%	100%	0%	407	394	399
4		पुर्णिया PURNEA	0%	100%	0%	422	394	410
5		मुजफ्फरपुर MUZAFFARPUR	0%	98%	2%	425	392	410
6		जमशेदपुर JAMSHEDPUR	0%	84%	16%	424	408	417
7		रेंगाली RENGALI	0%	100%	0%	407	391	397
8		जेयपुर JEYPORE	0%	100%	0%	422	366	408
1	उत्तरी क्षेत्र NR	नल्लागढ़ NALLAGARH	0%	80%	20%	432	400	414
2		भिवाड़ी BHIWADI	0%	60%	40%	437	404	419
3		बल्लभगढ़ BALLABGARH	0%	54%	46%	438	404	420
4		इलाहाबाद ALLAHABAD	0%	96%	4%	427	396	411
5		हिसार HISSAR	0%	100%	0%	423	391	408
6		बवाना BAWANA	0%	69%	30%	432	402	415
7		कानपुर KANPUR	0%	99%	1%	423	396	410
8		बस्सी BASSI	0%	46%	54%	435	403	420
9		लखनऊ LUCKNOW 765 kV	0%	100%	0%	787	720	754
10		मोगा MOGA	0%	99%	1%	423	392	408
11		रतनगढ़ RATANGARH	0%	97%	3%	426	402	413
1	पश्चिमी क्षेत्र WR	आसोज ASOJ	0%	100%	0%	420	397	409
2		इटारसी ITARSI	0%	99%	1%	426	395	410
3		जैतपुर JETPUR	0%	100%	0%	419	395	408
4		कासोर KASOR	0%	100%	0%	420	402	412
5		कोल्हापुर KOLHAPUR	0%	100%	0%	418	418	418
6		बीना BINA	0%	100%	0%	421	395	408
7		ग्वालियर GWALIOR	0%	100%	0%	399	399	399
8		रायपुर RAIPUR	0%	82%	18%	426	408	418
9		जबलपुर JABALPUR	0%	100%	0%	420	390	405
10		धुले DHULE	0%	100%	0%	408	408	408
1	दक्षिणी क्षेत्र SR	श्रीपेरुपुडूर SRIPERUMPUDUR	0%	100%	0%	413	390	403
2		नेवेली NEVELI	0%	67%	33%	429	400	418
3		सेलम SALEM	0%	100%	0%	414	384	401
4		बंगलूरु BANGALORE	6%	94%	0%	410	371	392
5		होसूर HOSUR	0%	100%	0%	409	377	396
6		रामागुंडम RAMAGUNDAM	0%	100%	0%	418	400	407
7		विजयवाड़ा VIJAYAWADA	0%	100%	0%	429	400	420
8		तिरुवनंतपुरम TIRIVANDRUM	0%	100%	0%	424	395	413
9		हैदराबाद HYDERABAD	0%	100%	0%	425	397	410
1	पूर्वोत्तर क्षेत्र NER	मिसा MISA	0%	99%	0%	436	388	401
2		बलिपारा BALIPARA	0%	100%	0%	414	382	399
3		बोंगाईगांव BONGAIGAON	0%	100%	0%	410	378	396
4		हाफ्लोंग HAFLONG 132 kV	0%	100%	0%	153	125	131
5		आइज़ोल AIZWAL 132 kV	2%	98%	0%	138	102	128
6		कुमारघाट KUMARGHAT 132 kV	0%	100%	0%	139	126	131
7		इम्फाल IMPHAL 132 kV	81%	19%	0%	133	100	117
8		खलेरियट Khlieriat PG 132 kV	0%	100%	0%	139	124	131

\*Percentage is calculated w.r.t. Time of one month.



**POWER SYSTEM OPERATION CORPORATION LIMITED**

पाँवर सिस्टम ऑपरेशन कारपोरेशन लिमिटेड

NATIONAL LOAD DESPATCH CENTRE - राष्ट्रीय भार प्रेषण केन्द्र

POWERGRID, B-9, Qutab Institutional Area,  
Katwaria Sarai, New Delhi-110016.