

# पावर सिस्टम ऑपरेशन कॉरपोरेशन लिमिटेड

(पावरग्रिड की पूर्ण स्वामित्व प्राप्त सहायक कंपनी)

## POWER SYSTEM OPERATION CORPORATION LIMITED

(A wholly owned subsidiary of POWERGRID)



पंजीकृत एवं केन्द्रीय कार्यालय: बी-9, प्रथम तल, कुतुब इंस्टीट्यूशनल एरिया, कटवारिया सराय, नई दिल्ली-110 016  
Registered & Corporate Office : B - 9, 1st Floor, Qutub Institutional Area, Katwaria Sarai, New Delhi - 110 016  
Website : www.posoco.in, www.nldc.in, Tel: 011-26536832, 26524522, Fax: 011-26524525, 26536901

संदर्भ संख्या:-POSOCO/NLDC/GM/

दिनांक: 24.06.2014

सेवा में,

वितरण सूची के अनुसार

विषय:- निष्पादन रिपोर्ट - मई 2014

महोदय,

आई०ई०जी०सी०-2010 के प्रावधान के अनुसार, - मई 2014 माह की अखिल भारतीय प्रणाली की निष्पादन रिपोर्ट

धन्यवाद

भवदीय

एस. आर. नरसिंहन

(एस. आर. नरसिंहन)

अपर महाप्रबंधक

(रा०भा०प्रे०के०)

संलग्नक: मासिक प्रणाली रिपोर्ट

## वितरण सूची

### Distribution List

1. सचिव, के.वि.नि.आ. तीसरा एवं चौथा तल, चंद्रलोक भवन, 36, जनपथ, नई दिल्ली - 110001  
Secretary, CERC, 3<sup>rd</sup> & 4<sup>th</sup> Floor, Chanderlok Building, 36, Janpath, New Delhi-110001
2. मुख्य अभियंता, (जी एम), के. वि. प्रा., सेवा भवन, आर. के. पुरम, नई दिल्ली - 110066  
Chief Engineer (GM), CEA, Sewa Bhavan, R.K.Puram, New Delhi-110066
3. सदस्य सचिव, ऊ. क्षे. वि. स., 18/ ए, शहीद जीत सिंह सनसनवाल मार्ग, नई दिल्ली - 110016  
Member Secretary, NRPC, 18/A, SJSS Marg, Katwaria Sarai, New Delhi-110016
4. सदस्य सचिव, प. क्षे. वि. स., एफ-3, एम आई डी सी क्षेत्र, अंधेरी, मुंबई - 400093  
Member Secretary, WRPC, F-3, MIDC Area, Andheri (East), Mumbai-400093
5. सदस्य सचिव, द. क्षे. वि. स., 29, रेस कोर्स क्रॉस रोड, बंगलुरु - 560009  
Member Secretary, SRPC, 29, Race Course Cross Road, Bangalore-560009
6. सदस्य सचिव, पू. क्षे. वि. स., 14, गोल्फ क्लब रोड, कोलकाता - 700033  
Member Secretary, ERPC, 14, Golf Club Road, Kolkata-700033
7. सदस्य सचिव, ऊ. पू. क्षे. वि. स., मेघालय राज्य आवसीय वित्त सहकारी समिति लिमिटेड भवन, नॉग्रिम हिल्स, शिलोंग - 793003  
Member Secretary, NERPC, Meghalaya State Housing Finance Cooperative Society Ltd.  
Building, Nongrim Hills, Shillong -793003
8. महाप्रबंधक, पू. क्षे. भा. प्रे. के., 14, गोल्फ क्लब रोड, कोलकाता - 700033  
General Manager, ERLDC, 14, Golf Club Road, Kolkata-700033
9. महाप्रबंधक, प. क्षे. भा. प्रे. के., एफ-3, एम आई डी सी क्षेत्र, अंधेरी, मुंबई - 400093  
General Manager, WRLDC, F-3, MIDC Area, Andheri (East), Mumbai-400093
10. महाप्रबंधक, ऊ. क्षे. भा. प्रे. के., 18/ ए, शहीद जीत सिंह सनसनवाल मार्ग, नई दिल्ली - 110016  
General Manager, NRLDC, 18/A, SJSS Marg, Katwaria Sarai, New Delhi-110016
11. कार्यपालक निदेशक, द. क्षे. भा. प्रे. के., 29, रेस कोर्स क्रॉस रोड, बंगलुरु - 560009  
Executive Director, SRLDC, 29, Race Course Cross Road, Bangalore-560009
12. महाप्रबंधक, ऊ. पू. क्षे. भा. प्रे. के., डोंगतिह, लोअर नॉग्रह, लापलंग, शिलोंग - 793006  
General Manager, NERLDC, Dongtiah, Lower Nongrah, Laplang, Shillong-793006



# POWER SYSTEM OPERATION CORPORATION LIMITED

(A wholly owned subsidiary of POWERGRID)

पावर सिस्टम ऑपरेशन कारपोरेशन लिमिटेड

NATIONAL LOAD DESPATCH CENTRE –राष्ट्रीय भार प्रेषण केन्द्र

मासिक ऑपरेशन रिपोर्ट

Monthly  
Operation Report



मई 2014

पावर सिस्टम ऑपरेशन कॉर्पोरेशन लिमिटेड  
राष्ट्रीय भार प्रेषण केंद्र, नई दिल्ली

POWER SYSTEM OPERATION CORPORATION LTD  
NATIONAL LOAD DESPATCH CENTRE, NEW DELHI



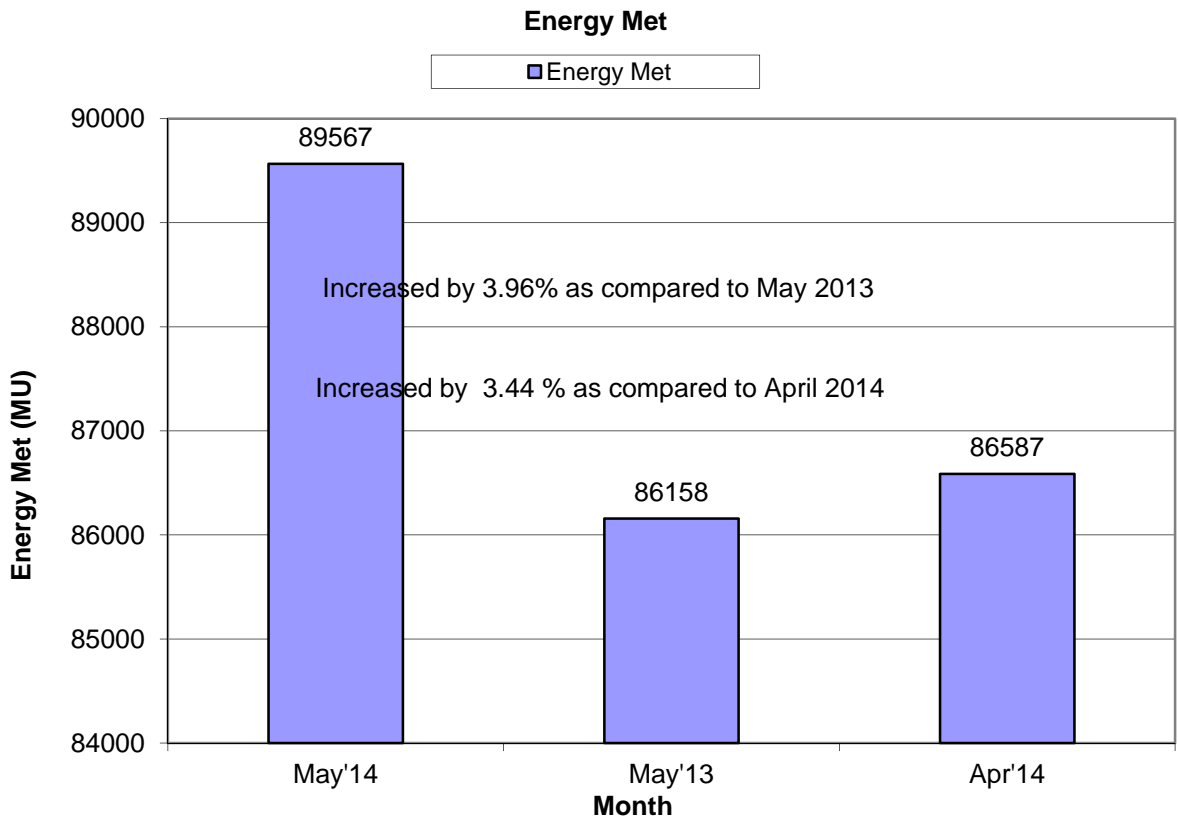
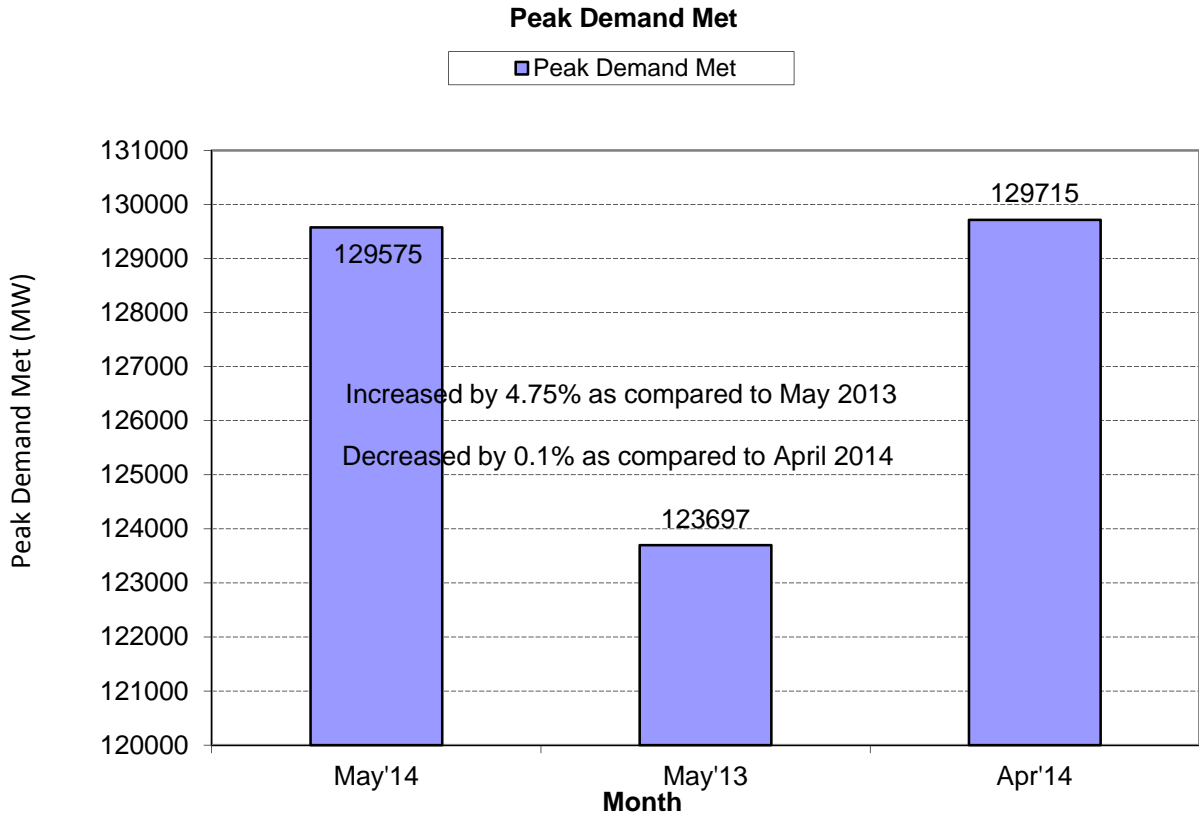
माह मई 2014 के लिए प्रचालन निष्पादन रिपोर्ट  
OPERATIONAL PERFORMANCE REPORT FOR THE  
MONTH OF MAY 2014

## पृष्ठसूची CONTENTS

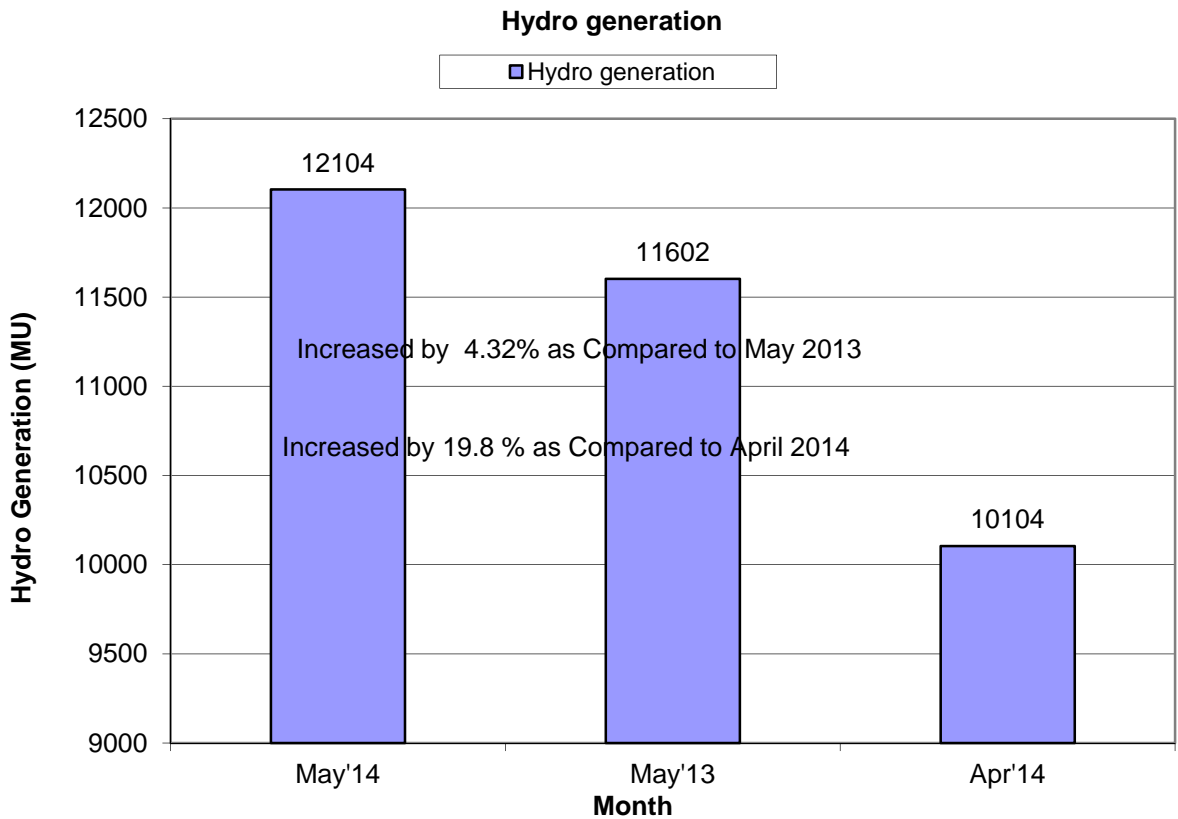
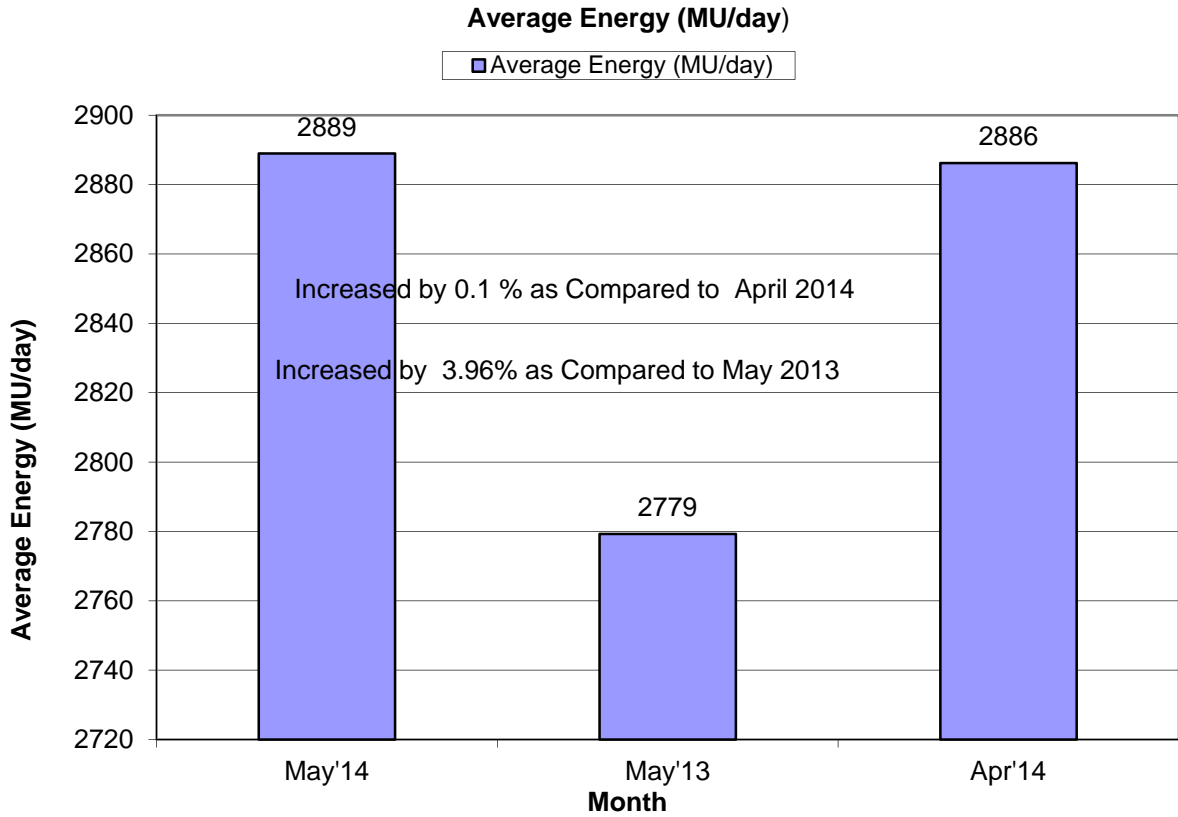
1. माह मई 2014 की सारांश रिपोर्ट SUMMARY OF REPORT FOR THE MONTH OF MAY' 2014	1-4
2. क्षेत्रवार स्थापित विद्युत क्षमता REGION WISE INSTALLED CAPACITY	5
3. राष्ट्रीय स्तर पर संध्यकालीन शिखर मांगपूर्ति PEAK DEMAND MET AT NATIONAL LEVEL	6-8
4. राष्ट्रीय स्तर पर विद्युत ऊर्जा खपत ENERGY CONSUMPTION AT NATIONAL LEVEL	9-10
5. फ्रिक्वेंसी रूपरेखा FREQUENCY PROFILE	11-14
6. राष्ट्रीय स्तर पर जल विद्युत ऊर्जा उत्पादन HYDRO GENERATION AT NATIONAL LEVEL	15-16
7. राष्ट्रीय स्तर पर पन विद्युत ऊर्जा उत्पादन WIND GENERATION AT NATIONAL LEVEL	17
8. ऊर्जा आपूर्ति की वास्तविक स्थिति ACTUAL POWER SUPPLY POSITION	18
9. शिखर मांग आवश्यकता एवं आपूर्ति की पिछले वर्ष के मई माह से तुलना ENERGY REQUIREMENT & MET COMPARISON WITH MAY'2013	19
10. ऊर्जा आवश्यकता एवं आपूर्ति की पिछले वर्ष के मई माह से तुलना PEAK DEMAND REQUIREMENT & MET COMPARISON WITH MAY'2013	20
11. क्षेत्रीय स्तर पर शिड्यूल एवं ड्रावल SCHEDULE & DRAWAL AT REGIONAL LEVEL	21
12. अंतर क्षेत्रीय विनिमय INTER-REGIONAL EXCHANGES	22-27
13. अंतर राष्ट्रीय विद्युत विनिमय INTER-NATIONAL EXCHANGES	28
14. एसटीओए (द्विपक्षीय एवं सामूहिक) एवं यू आई का ब्यौरा BILATERAL & COLLECTIVE SHORT-TERM OPEN ACCESS & UI DETAILS	29
15. पावर मार्केट की सूचना POWER MARKET INFORMATION	30-31

16. अक्षय ऊर्जा प्रमाण - पत्र प्रक्रिया RENEWABLE ENERGY CERTIFICATE MECHANISM	32-34
17. मुख्य घटनाये एवं डिसटर्बेनसेज IMPORTANT EVENTS/DISTURBANCES	35-37
18. नये कमीशंड पारेषण तत्व NEW ELEMENTS COMMISSIONED	38
19. विभव रूपरेखा VOLTAGE PROFILE	39

# 1. SUMMARY OF REPORT FOR THE MONTH OF MAY 2014

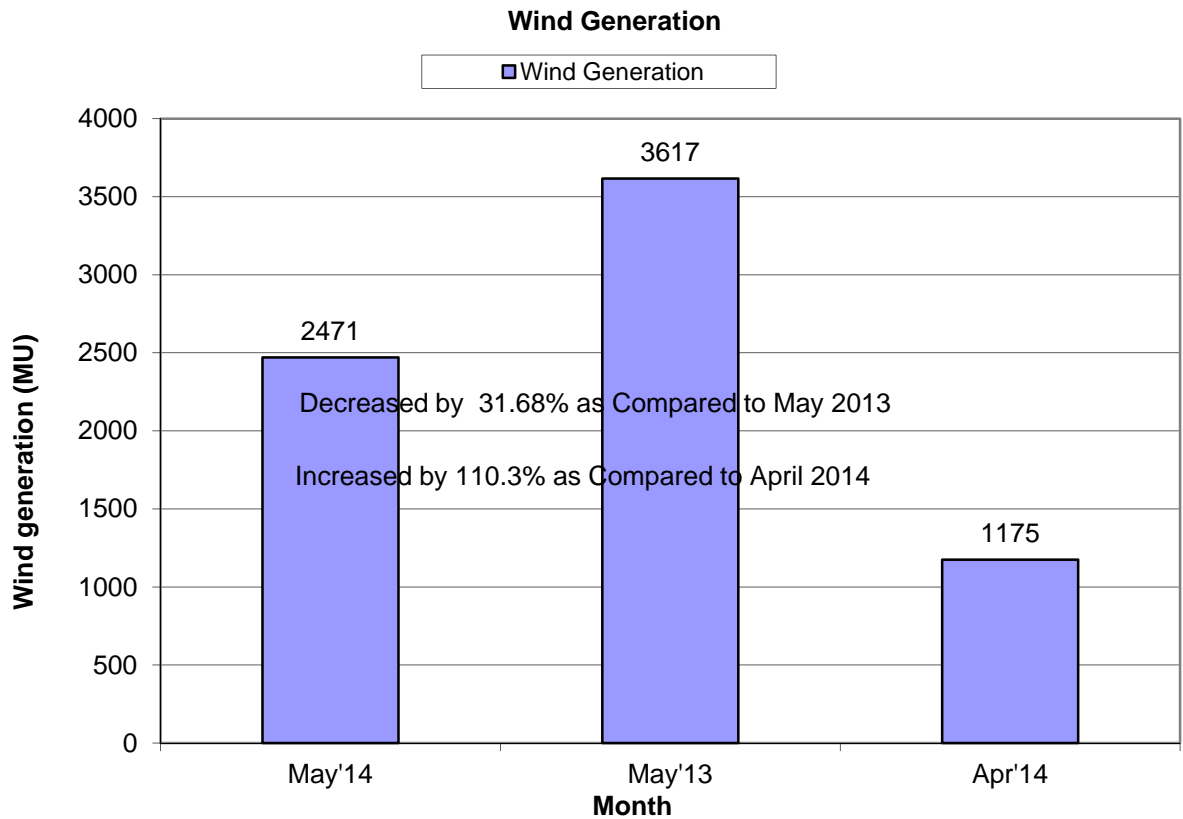
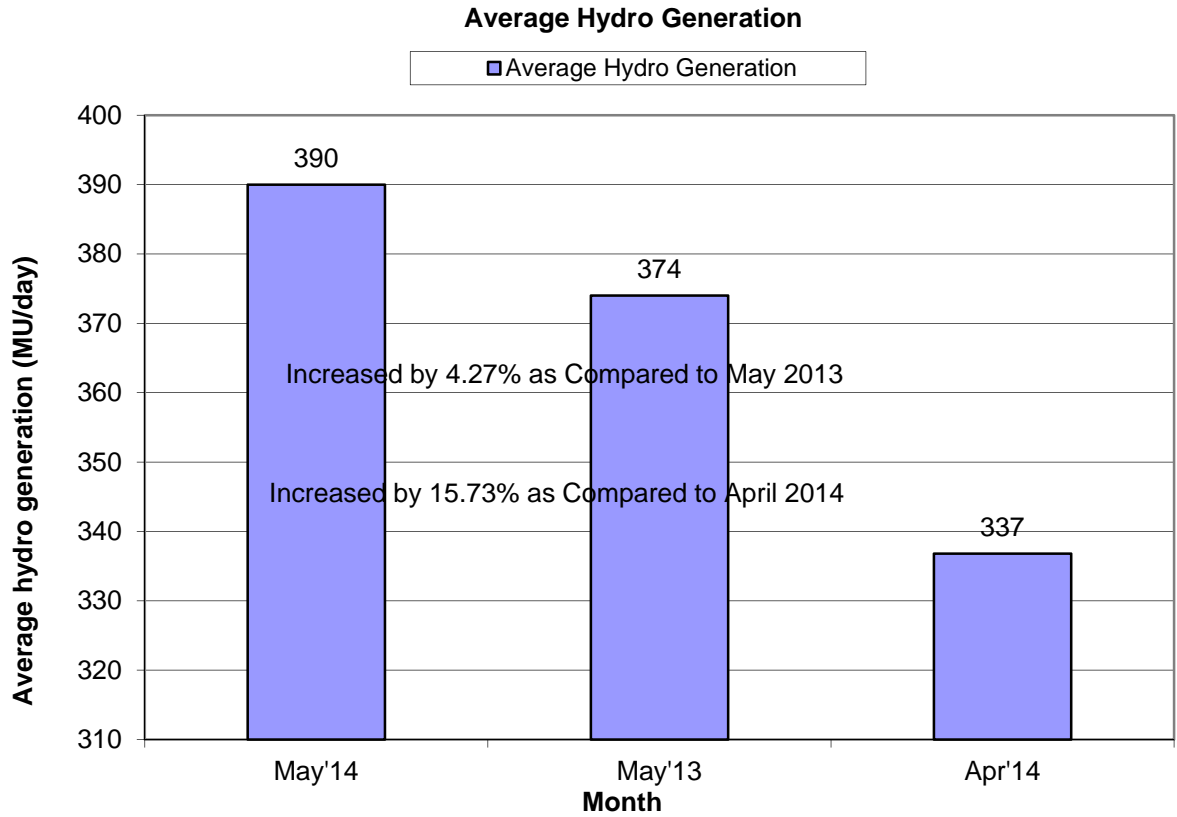


# 1. SUMMARY OF REPORT FOR THE MONTH OF MAY 2014

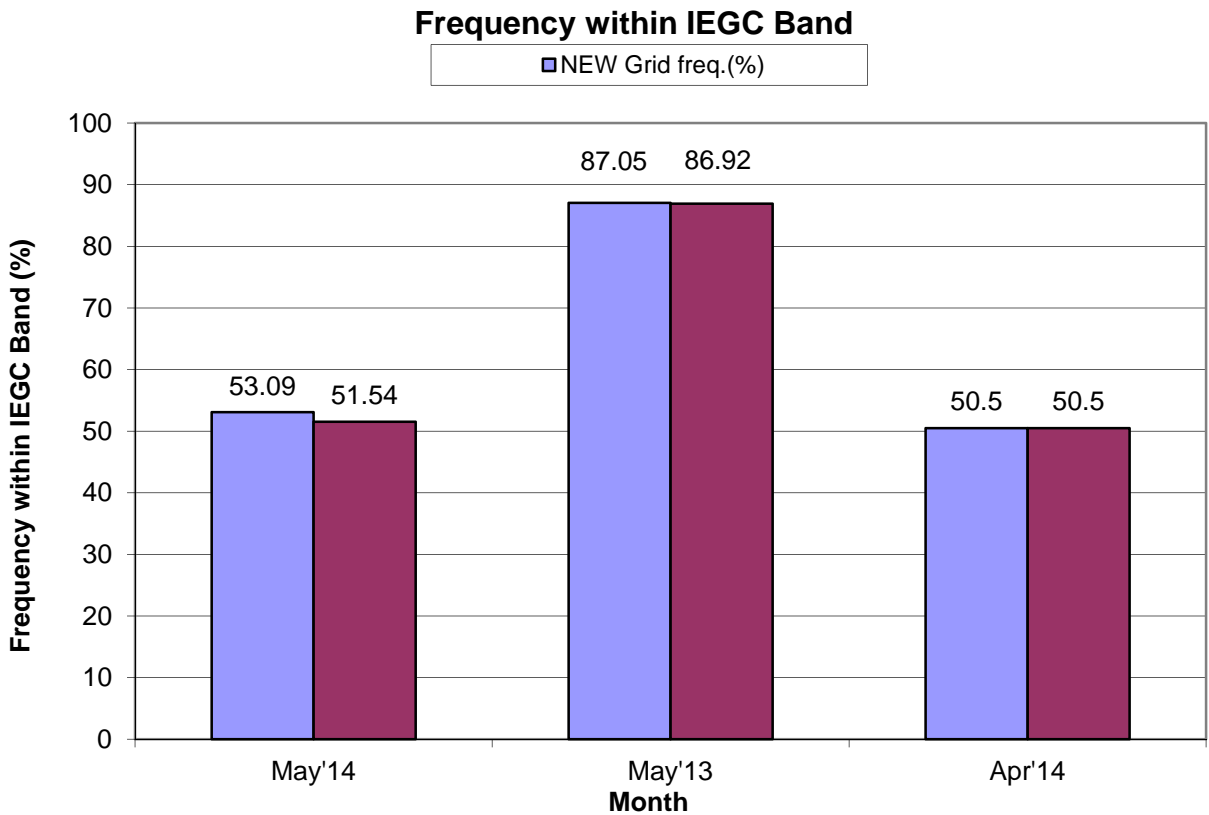
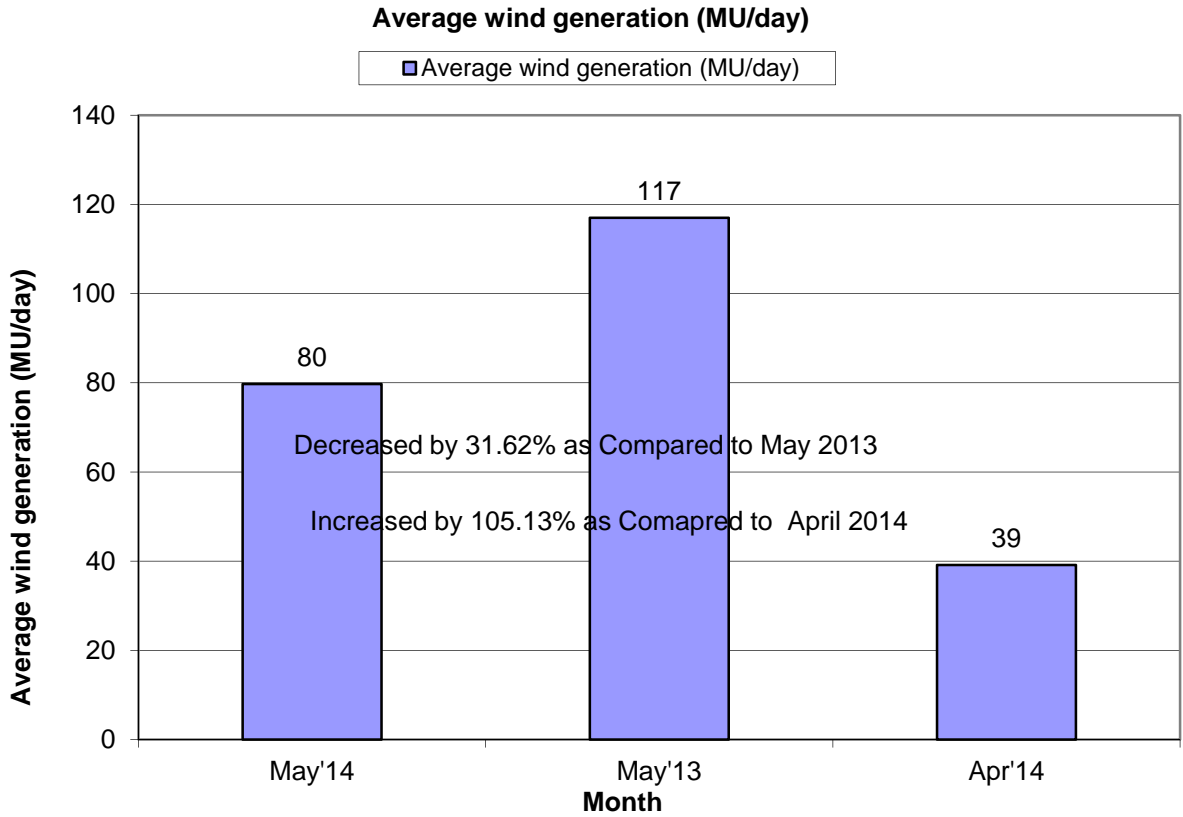




# 1. SUMMARY OF REPORT FOR THE MONTH OF MAY 2014



# 1. SUMMARY OF REPORT FOR THE MONTH OF MAY 2014



## 2. ALL INDIA REGIONWISE INSTALLED CAPACITY

As on 31.05.2014  
(All figures are in MW)

SL. NO.	REGION	THERMAL				NUCLEAR	HYDRO	R.E.S. @ (MNRE)	TOTAL
		COAL	GAS	DSL	TOTAL				
1	NORTHERN	35884	5331	13	41228	1620	16461	5936	65244
2	WESTERN	59115	10915	17	70047	1840	7448	11271	90606
3	SOUTHERN	26583	4963	939	32485	1320	11398	13785	58987
4	EASTERN	25928	190	17	26135	0	4113	433	30681
5	NORTH EASTERN	60	1208	143	1411	0	1242	257	2910
6	ISLANDS	0	0	70	70	0	0	11	81
<b>All India</b>		<b>147568</b>	<b>22608</b>	<b>1200</b>	<b>171376</b>	<b>4780</b>	<b>40661</b>	<b>31692</b>	<b>248510</b>

Remarks: Data taken from CEA website

**3. राष्ट्रीय स्तर पर संध्याकालीन शिखर विद्युत मांग पूर्ति  
PEAK DEMAND MET AT NATIONAL LEVEL**

माह:- मई 2014

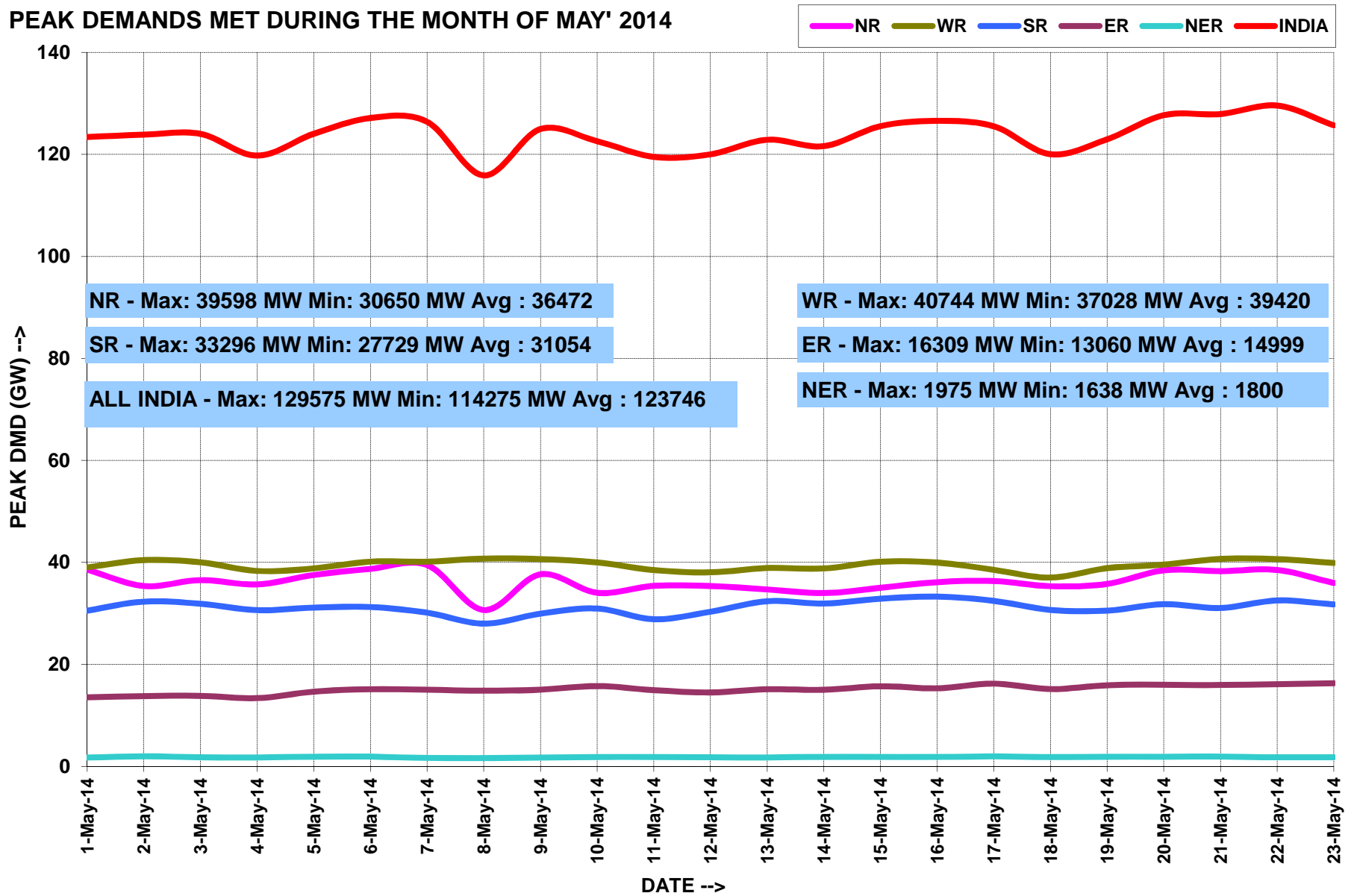
MONTH:- May 2014

सभी आंकड़े मेगावाट में All figures in MW

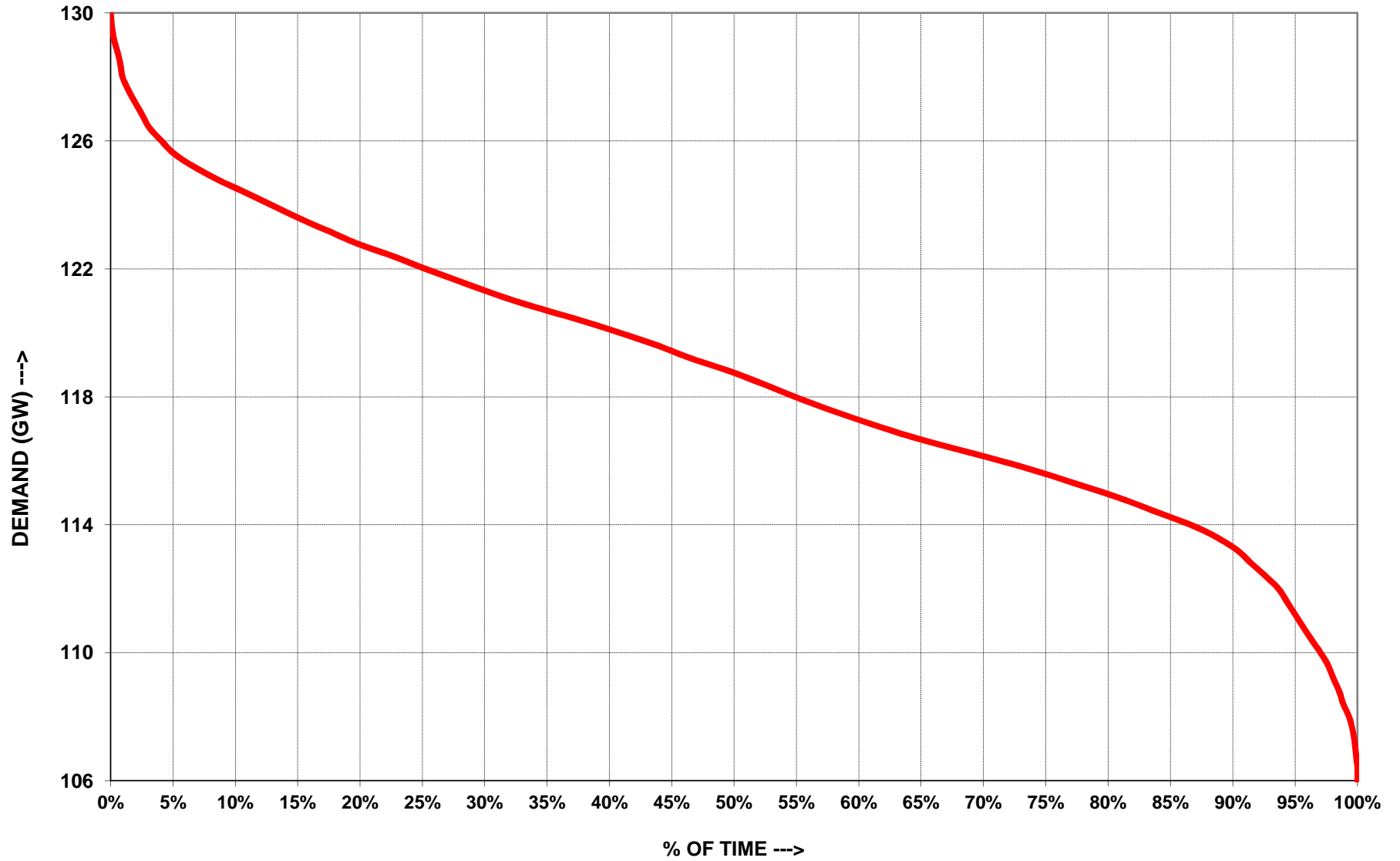
दिनांक Date	उत्तरी क्षे. NR	पश्चिमी क्षे. WR	दक्षिणी क्षे. SR	पूर्वी क्षे. ER	पूर्वोत्तर क्षे. NER	कुल TOTAL
01-May-14	38592	39027	30543	13516	1731	123409
02-May-14	35370	40442	32315	13780	1975	123882
03-May-14	36530	40016	31884	13827	1777	124033
04-May-14	35685	38319	30632	13378	1760	119774
05-May-14	37534	38840	31126	14660	1885	124045
06-May-14	38717	40153	31242	15123	1906	127141
07-May-14	39461	40146	30134	15016	1638	126395
08-May-14	30650	40744	27993	14839	1659	115885
09-May-14	37662	40648	29948	15032	1700	124990
10-May-14	34050	39991	30952	15746	1839	122578
11-May-14	35395	38494	28858	14945	1826	119518
12-May-14	35367	38050	30326	14495	1786	120024
13-May-14	34698	38904	32385	15130	1762	122879
14-May-14	33977	38807	31935	15015	1891	121625
15-May-14	35014	40124	32880	15711	1816	125545
16-May-14	36126	39967	33296	15302	1891	126583
17-May-14	36346	38540	32452	16232	1952	125522
18-May-14	35335	37028	30683	15166	1832	120044
19-May-14	35777	38875	30536	15926	1858	122972
20-May-14	38442	39554	31803	15992	1899	127690
21-May-14	38284	40684	31063	15961	1930	127922
22-May-14	38508	40663	32529	16095	1780	129575
23-May-14	35959	39877	31760	16309	1799	125704
24-May-14	36790	39132	31792	15904	1658	125277
25-May-14	33589	37288	27729	14031	1638	114275
26-May-14	38626	39706	28790	13923	1772	122817
27-May-14	38130	39678	30875	14249	1785	124717
28-May-14	39415	39300	30357	13060	1680	123812
29-May-14	39598	39782	31297	16163	1777	128617
30-May-14	32602	40017	32650	16190	1790	123249
31-May-14	38417	39224	31912	14268	1820	125641
उच्चतम MAXIMUM	39598	40744	33296	16309	1975	129575
निम्नतम MINIMUM	30650	37028	27729	13060	1638	114275
औसत AVERAGE	36472	39420	31054	14999	1800	123746
अब तक का उच्चतम All Time Max.	42255	41896	36126	16979	2013	129715
दिनांक Date	14.09.13	26.04.14	24.03.14	22.04.14	11.10.13	29.04.14

नोट : सभी आंकड़े 1900 बजे की मांगपूर्ति पर आधारित है । Note: The above figures corresponds to value at 1900 Hrs

# PEAK DEMANDS MET DURING THE MONTH OF MAY' 2014



# ALL INDIA LOAD DURATION CURVE FOR MAY' 2014



## 4. राष्ट्रीय स्तर पर विद्युत ऊर्जा आपूर्ति ENERGY MET AT NATIONAL LEVEL

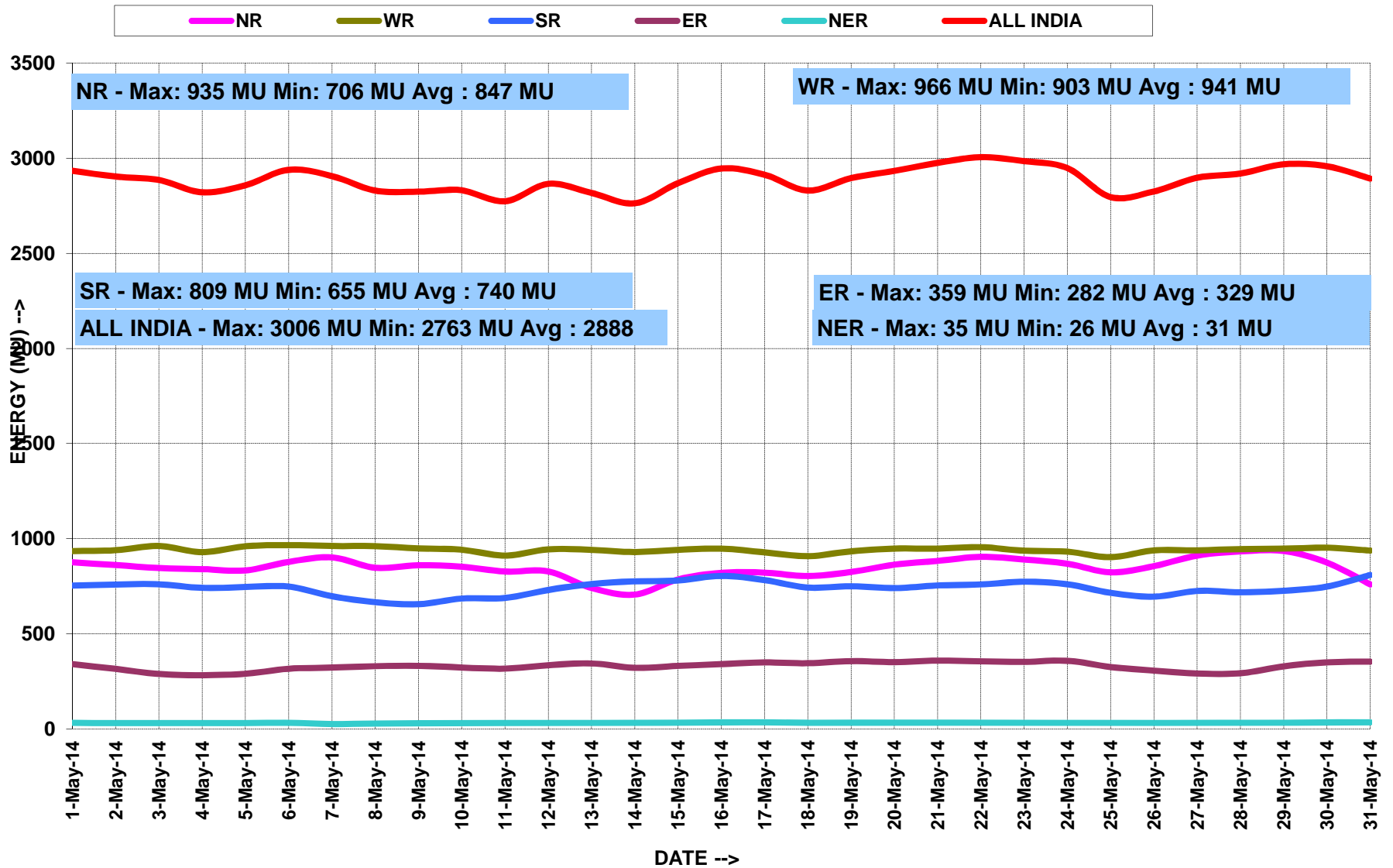
माह:- मई 2014

MONTH:- May 2014

सभी आंकड़े मिलियन यूनिट में All figures in MU

दिनांक Date	उत्तरी क्षे. NR	पश्चिमी क्षे. WR	दक्षिणी क्षे. SR	पूर्वी क्षे. ER	पूर्वोत्तर क्षे. NER	कुल TOTAL
01-May-14	875	934	753	340	31	2934
02-May-14	861	939	759	315	30	2904
03-May-14	846	961	760	288	30	2886
04-May-14	840	929	741	282	30	2821
05-May-14	833	960	746	290	30	2859
06-May-14	878	966	748	316	31	2940
07-May-14	901	961	697	322	26	2907
08-May-14	847	960	666	330	27	2830
09-May-14	860	949	655	331	29	2825
10-May-14	852	942	685	322	31	2832
11-May-14	827	911	688	317	31	2774
12-May-14	828	944	730	334	30	2866
13-May-14	740	941	761	344	31	2818
14-May-14	706	930	775	321	32	2763
15-May-14	786	941	780	331	32	2869
16-May-14	820	948	804	340	34	2946
17-May-14	821	928	782	349	34	2914
18-May-14	803	908	743	345	31	2830
19-May-14	825	933	750	356	32	2896
20-May-14	863	948	740	351	32	2934
21-May-14	883	948	754	359	33	2976
22-May-14	904	955	759	355	32	3006
23-May-14	891	936	774	352	32	2985
24-May-14	868	932	760	358	31	2948
25-May-14	823	903	715	325	30	2796
26-May-14	856	938	695	306	31	2826
27-May-14	911	939	725	291	32	2898
28-May-14	933	945	718	292	32	2920
29-May-14	935	947	726	329	32	2969
30-May-14	874	952	748	350	34	2958
31-May-14	886	950	754	315	34	2939
<b>कुल TOTAL</b>	<b>26376</b>	<b>29179</b>	<b>22891</b>	<b>10154</b>	<b>967</b>	<b>89567</b>
<b>उच्चतम MAXIMUM</b>	<b>935</b>	<b>966</b>	<b>804</b>	<b>359</b>	<b>34</b>	<b>3006</b>
<b>निम्नतम MINIMUM</b>	<b>706</b>	<b>903</b>	<b>655</b>	<b>282</b>	<b>26</b>	<b>2763</b>
<b>औसत AVERAGE</b>	<b>851</b>	<b>941</b>	<b>738</b>	<b>328</b>	<b>31</b>	<b>2889</b>
<b>अब तक का उच्चतम All Time Max.</b>	<b>969</b>	<b>1001</b>	<b>845</b>	<b>367</b>	<b>38</b>	<b>3024</b>
<b>दिनांक Date</b>	<b>12.09.13</b>	<b>29.04.14</b>	<b>26.03.14</b>	<b>26.04.14</b>	<b>22.09.13</b>	<b>29.04.14</b>

# ENERGY MET DURING THE MONTH OF MAY' 2014





**5.वर्ष 2014-15 के लिए आवृत्ति रूपरेखा FREQUENCY PROFILE FOR YEAR 2014-15**

**राष्ट्रीय ग्रिड NATIONAL GRID**

फ़िक्वेंसी रूपरेखा (Hz)		<49.7	49.0-49.9	<49.9	49.9-50.05	>50.05		उच्चतम फ़िक्वेंसी	निम्नतम फ़िक्वेंसी	औसत फ़िक्वेंसी
% समय	Apr-14	1.84	34.20	36.04	50.5	13.46		50.53	49.49	49.94
<b>न्यु ग्रिड NEW GRID</b>										
	May-14	0.93	22.39	22.39	53.09	24.52		50.56	49.41	49.98
<b>द. क्षे. ग्रिड SR GRID*</b>										
	May-14	1.46	26.88	26.88	51.54	21.58		50.56	49.41	49.97

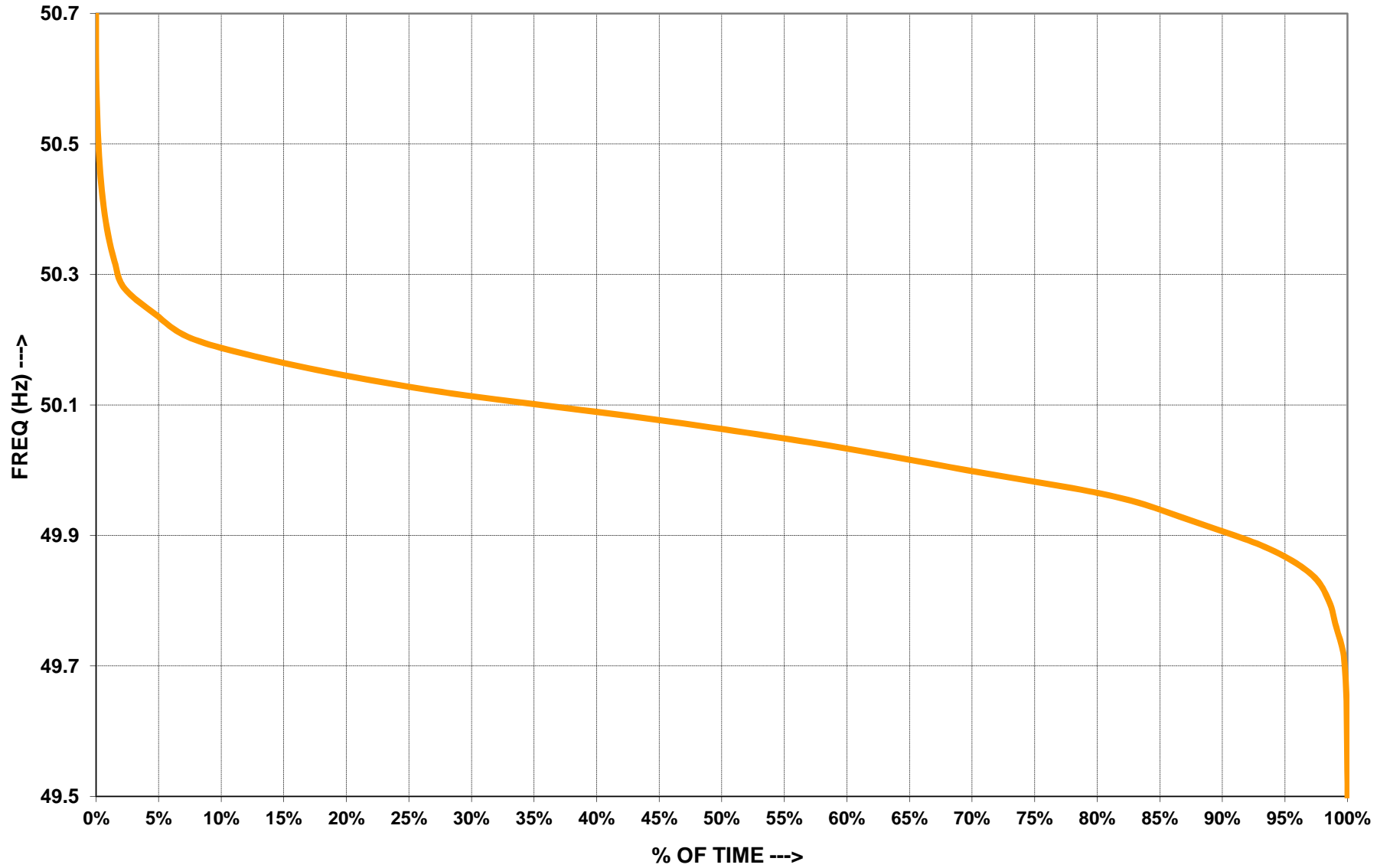
\* Desynchronisation of NEW & SR Grid on following day occurred:- (i) On 29.05.14 from 17:01 hrs to 17:35 hrs due to tripping of 765 kV Sholapur - Raichur , (ii) On 30.05.14 from 10:36 hrs to 14:37 hrs due to shut down of 765 kV Sholapur - Raichur

**5.1 अप्रैल 2014 के लिए आवृत्ति रूपरेखा FREQUENCY PROFILE FOR APR' 2014**

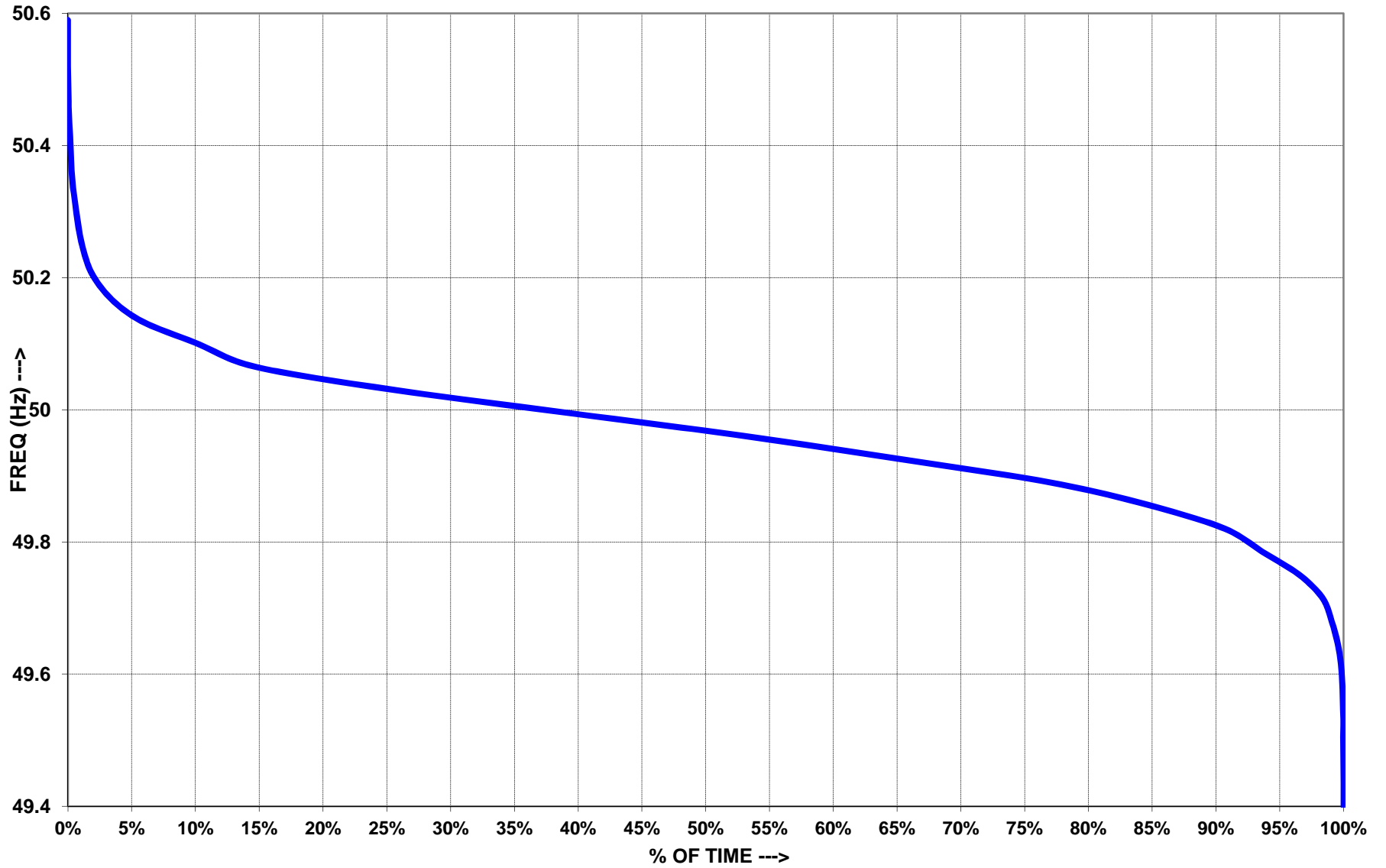
राष्ट्रीय गिड NATIONAL GRID									
फ्रिक्वेंसी रूपरेखा (Hz)	<49.0	49.0-49.9	>49.9	49.9-50.05	>50.05	उच्चतम फ्रिक्वेंसी	निम्नतम फ्रिक्वेंसी	औसत फ्रिक्वेंसी	
% समय	01-May-14	0.00	13.30	13.30	53.87	32.80	50.48	49.72	50.02
	02-May-14	0.00	7.50	7.50	51.49	41.01	50.48	49.72	50.04
	03-May-14	0.00	8.09	8.09	39.46	52.44	50.37	49.73	50.05
	04-May-14	0.00	11.09	11.09	50.68	38.23	50.46	49.69	50.03
	05-May-14	0.00	8.40	8.40	46.88	44.72	50.29	49.76	50.03
	06-May-14	0.00	6.92	6.92	68.03	25.05	50.32	49.76	50.00
	07-May-14	0.00	6.97	6.97	61.49	31.54	50.37	49.76	50.01
	08-May-14	0.00	17.70	17.70	49.10	33.20	50.50	49.73	50.02
	09-May-14	0.00	10.84	10.84	53.68	35.47	50.24	49.67	50.01
	10-May-14	0.00	16.10	16.10	66.70	17.20	50.25	49.74	49.98
	11-May-14	0.00	11.85	11.85	61.57	26.57	50.35	49.65	50.00
	12-May-14	0.00	21.06	21.06	69.85	9.09	50.28	49.72	49.96
	13-May-14	0.00	22.71	22.71	42.43	34.86	50.55	49.63	50.01
	14-May-14	0.00	18.70	18.70	53.50	27.80	50.33	49.68	50.00
	15-May-14	0.00	37.60	37.60	53.90	8.50	50.25	49.63	49.93
	16-May-14	0.00	53.11	53.11	40.81	6.08	50.28	49.51	49.89
	17-May-14	0.00	46.02	46.02	35.86	18.13	50.31	49.48	49.91
	18-May-14	0.00	57.40	57.40	32.42	10.19	50.31	49.48	49.88
	19-May-14	0.00	21.06	21.06	69.85	9.09	50.28	49.72	49.96
	20-May-14	0.00	44.06	44.06	49.24	6.70	50.28	49.41	49.91
	21-May-14	0.00	28.10	28.10	60.80	11.10	50.24	49.65	49.94
	22-May-14	0.00	26.34	26.34	57.07	16.59	50.30	49.66	49.96
	23-May-14	0.00	27.11	27.11	54.46	18.44	50.31	49.65	49.96
	24-May-14	0.00	40.22	40.22	49.27	10.51	50.25	49.65	49.93
	25-May-14	0.00	10.70	10.70	60.60	28.70	50.33	49.64	50.01
	26-May-14	0.00	28.30	28.30	47.90	23.80	50.20	49.54	49.96
	27-May-14	0.00	10.13	10.13	66.63	23.24	50.39	49.71	50.00
	28-May-14	0.00	23.68	23.68	42.85	33.47	50.32	49.64	49.99
	29-May-14	0.00	24.45	24.45	55.94	19.61	50.31	49.60	49.96
	30-May-14	0.00	17.81	17.81	50.42	31.77	50.59	49.63	49.99
	31-May-14	0.00	16.84	16.84	48.92	34.24	50.36	49.65	50.00
<b>द. क्षे. गिड SR GRID*</b>									
% समय	29-May-14	0.00	28.70	28.70	54.20	17.10	50.31	46.60	49.96
	30-May-14	0.00	27.36	27.36	46.46	26.18	50.56	49.61	49.97

\* For remaining days SR Grid remained in synchronisation with National Grid

# ALL INDIA GRID FREQUENCY DURATION CURVE FOR MAY' 2014



# SOUTHERN GRID FREQUENCY DURATION CURVE FOR MAY' 2014



**6.राष्ट्रीय स्तर पर जल विद्युत उत्पादन  
HYDRO GENERATION AT NATIONAL LEVEL**

**माह:- मई 2014**

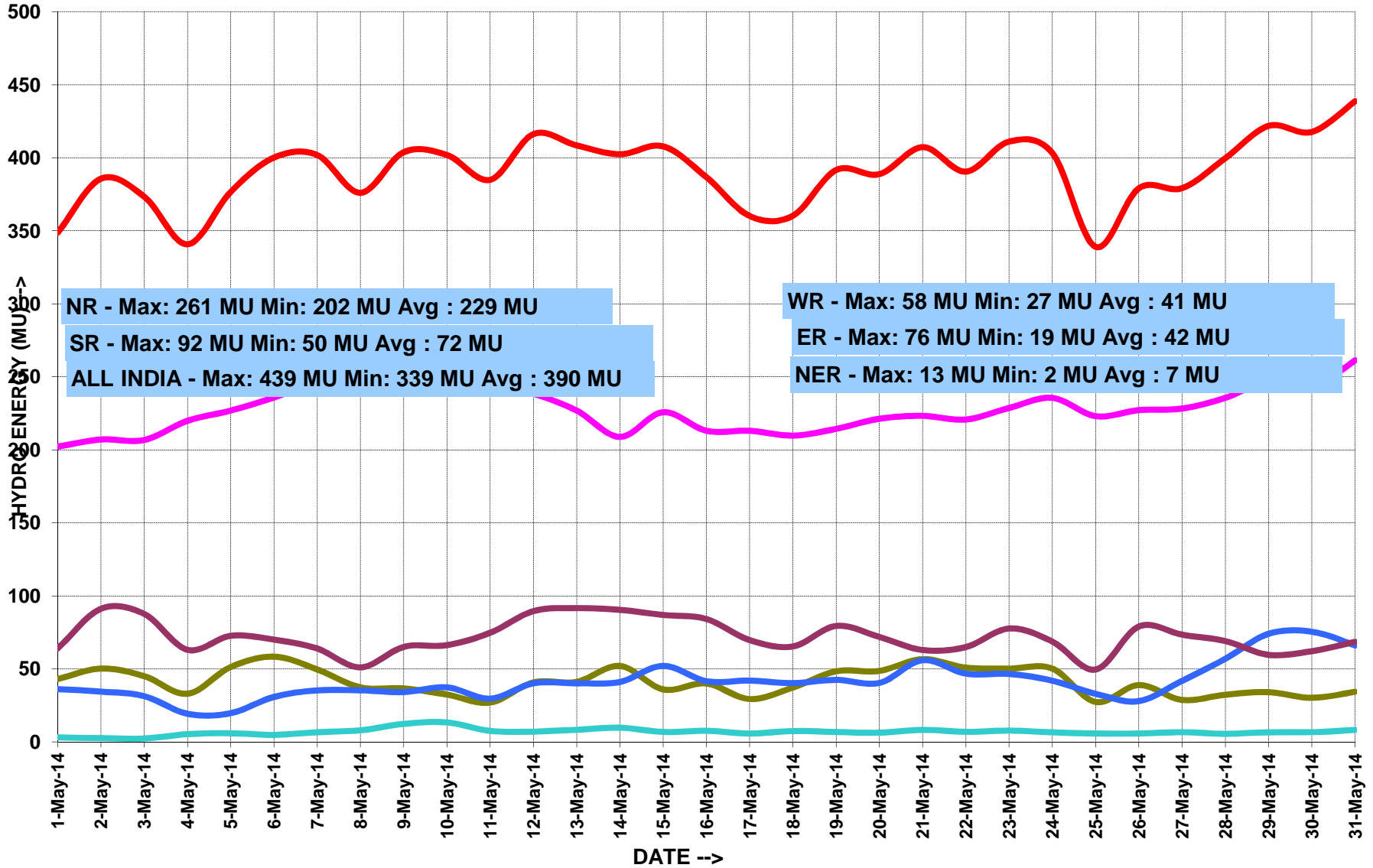
**MONTH:- May 2014**

सभी आंकड़े मिलियन यूनिट में All figures in MU

दिनांक Date	ऊत्तरी क्षे. NR	पश्चिमी क्षे. WR	दक्षिणी क्षे. SR	पूर्वी क्षे. ER	पूर्वोत्तर क्षे. NER	कुल TOTAL
01-May-14	202	43	64	36	3	349
02-May-14	207	50	91	35	3	386
03-May-14	207	45	88	31	2	373
04-May-14	220	33	63	19	5	341
05-May-14	227	51	73	20	6	377
06-May-14	236	58	70	31	5	400
07-May-14	246	50	64	35	7	402
08-May-14	244	37	51	35	8	376
09-May-14	255	37	65	34	12	404
10-May-14	252	33	66	37	13	402
11-May-14	246	27	75	30	8	385
12-May-14	239	41	90	40	7	416
13-May-14	227	41	92	40	8	408
14-May-14	209	52	91	41	10	402
15-May-14	226	36	87	52	7	408
16-May-14	213	40	84	42	8	387
17-May-14	213	29	70	42	6	360
18-May-14	210	37	65	40	8	360
19-May-14	214	48	80	43	7	392
20-May-14	221	49	72	40	6	389
21-May-14	223	57	63	56	8	407
22-May-14	221	51	65	47	7	391
23-May-14	229	50	78	47	8	411
24-May-14	236	50	69	42	7	403
25-May-14	223	27	50	33	6	339
26-May-14	227	39	79	28	6	379
27-May-14	228	29	74	42	7	379
28-May-14	236	32	69	57	6	400
29-May-14	247	34	60	74	7	422
30-May-14	243	30	62	76	7	418
31-May-14	261	34	69	66	8	439
<b>कुल TOTAL</b>	<b>7088</b>	<b>1273</b>	<b>2236</b>	<b>1292</b>	<b>214</b>	<b>12104</b>
<b>उच्चतम MAXIMUM</b>	<b>261</b>	<b>58</b>	<b>92</b>	<b>76</b>	<b>13</b>	<b>439</b>
<b>निम्नतम MINIMUM</b>	<b>202</b>	<b>27</b>	<b>50</b>	<b>19</b>	<b>2</b>	<b>339</b>
<b>औसत AVERAGE</b>	<b>229</b>	<b>41</b>	<b>72</b>	<b>42</b>	<b>7</b>	<b>390</b>
<b>अब तक का उच्चतम All Time Max.</b>	<b>319</b>	<b>142</b>	<b>202</b>	<b>91</b>	<b>27</b>	<b>712</b>
<b>दिनांक Date</b>	<b>22.08.13</b>	<b>29.09.11</b>	<b>08.08.13</b>	<b>07.09.13</b>	<b>14.09.10</b>	<b>27.08.13</b>

# HYDRO ENERGY DURING THE MONTH OF MAY' 2014

NR WR SR ER NER INDIA



**7. राष्ट्रीय स्तर पर पवन ऊर्जा उत्पादन  
WIND GENERATION AT NATIONAL LEVEL**

**माह:- मई 2014**

**MONTH:- May 2014**

सभी आंकड़े मिलियन यूनिट में All figures in MU

दिनांक Date	ऊत्तरी क्षे. NR	पश्चिमी क्षे. WR	दक्षिणी क्षे. SR	पूर्वी क्षे. ER	पूर्वोत्तर क्षे. NER	कुल TOTAL
01-May-14	5.6	27.9	13.0	...	...	46.5
02-May-14	6.6	33.5	10.6	...	...	50.7
03-May-14	5.7	31.8	8.4	...	...	45.9
04-May-14	2.8	23.2	4.0	...	...	30.0
05-May-14	3.1	18.4	12.0	...	...	33.5
06-May-14	2.1	14.4	11.9	...	...	28.4
07-May-14	3.0	21.4	8.5	...	...	32.9
08-May-14	7.3	23.5	13.8	...	...	44.6
09-May-14	3.6	35.5	23.1	...	...	62.2
10-May-14	7.6	53.6	41.5	...	...	102.7
11-May-14	9.2	47.2	24.2	...	...	80.6
12-May-14	13.2	51.1	22.7	...	...	87.0
13-May-14	12.5	53.5	32.1	...	...	98.1
14-May-14	5.9	33.2	49.3	...	...	88.4
15-May-14	5.0	31.9	58.2	...	...	95.1
16-May-14	5.2	31.4	67.8	...	...	104.4
17-May-14	6.2	21.9	59.9	...	...	88.0
18-May-14	3.8	18.4	24.5	...	...	46.7
19-May-14	4.0	22.4	31.2	...	...	57.6
20-May-14	2.0	28.3	44.3	...	...	74.6
21-May-14	1.9	32.8	56.2	...	...	90.9
22-May-14	10.9	44.4	66.0	...	...	121.3
23-May-14	11.4	43.9	64.2	...	...	119.5
24-May-14	7.0	41.5	65.4	...	...	113.9
25-May-14	6.2	34.4	64.0	...	...	104.6
26-May-14	4.3	24.0	55.1	...	...	83.4
27-May-14	5.8	23.8	39.7	...	...	69.3
28-May-14	10.9	28.8	24.2	...	...	63.9
29-May-14	19.3	44.0	51.0	...	...	114.3
30-May-14	19.3	57.9	67.6	...	...	144.8
31-May-14	19.3	52.7	75.8	...	...	147.8
<b>कुल TOTAL</b>	<b>231</b>	<b>1051</b>	<b>1190</b>	<b>...</b>	<b>...</b>	<b>2471</b>
<b>उच्चतम MAXIMUM</b>	<b>19</b>	<b>58</b>	<b>76</b>	<b>...</b>	<b>...</b>	<b>148</b>
<b>निम्नतम MINIMUM</b>	<b>2</b>	<b>14</b>	<b>4</b>	<b>...</b>	<b>...</b>	<b>28</b>
<b>औसत AVERAGE</b>	<b>7</b>	<b>34</b>	<b>38</b>	<b>...</b>	<b>...</b>	<b>80</b>
<b>अब तक का उच्चतम All Time Max.</b>	<b>34.9</b>	<b>83.5</b>	<b>114.8</b>	<b>...</b>	<b>...</b>	<b>223.8</b>
<b>दिनांक Date</b>	<b>12.06.12</b>	<b>03.08.12</b>	<b>14.06.13</b>	<b>...</b>	<b>...</b>	<b>03.08.12</b>

**8. ACTUAL POWER SUPPLY POSITION - MAY 2014**

REGION	STATE	Requirement/Availability in MU/DAY			Requirement/Availability in MU				Peak Demand/Peak Met in MW			
		Requirement	Energy met	Surplus(+)/ Deficit(-)	Requirement	Energy met	Surplus(+)/ Deficit(-)	% Shortage	Requirement	Peak Demand	Surplus(+)/ Deficit(-)	% Shortage
NR	Chandigarh	5	5	0	152	152	0	0.0	300	300	0	0.0
	Delhi	90	90	0	2795	2794	-1	0.0	5358	5338	-20	-0.4
	Haryana	120	119	-1	3706	3686	-20	-0.5	6173	6749	576	9.3
	H.P.	24	24	0	745	744	-2	-0.2	1173	1173	0	0.0
	J&K	43	35	-9	1342	1074	-268	-20.0	2384	1907	-477	-20.0
	Punjab	119	119	-1	3703	3679	-24	-0.6	6910	6910	0	0.0
	Rajasthan	171	170	0	5286	5277	-10	-0.2	8860	8727	-133	-1.5
	U.P.	296	260	-36	9177	8069	-1107	-12.1	15506	11821	-3685	-23.8
	Uttarakhand	33	33	0	1026	1011	-15	-1.5	1791	1716	-75	-4.2
	NFF/Railway	2	2	0	68	68	0	0.0	100	100	0	0.0
<b>TOTAL</b>	<b>903</b>	<b>857</b>	<b>-47</b>	<b>28000</b>	<b>26554</b>	<b>-1446</b>	<b>-5.2</b>	<b>44147</b>	<b>41007</b>	<b>-3140</b>	<b>-7.1</b>	
WR	Gujarat	281	281	0	8721	8714	-7	-0.1	13466	13471	5	0.0
	Madhya Pradesh	154	153	-1	4763	4740	-23	-0.5	7215	7159	-56	-0.8
	Chhattisgarh	70	69	0	2165	2150	-14	-0.7	3340	3336	-4	-0.1
	Maharashtra	413	403	-10	12798	12497	-291	-2.3	20137	19326	-811	-4.0
	Goa	9	9	0	275	273	-1	-0.6	438	438	0	0.0
	D&D	6	6	0	179	179	0	0.0	288	288	0	0.0
	DNH	15	15	0	474	473	-1	-0.3	687	687	0	0.0
	ESIL	10	10	0	315	314	-1	-0.3	606	606	0	0.0
<b>TOTAL</b>	<b>958</b>	<b>946</b>	<b>-11</b>	<b>29690</b>	<b>29340</b>	<b>-338</b>	<b>-1.2</b>	<b>43523</b>	<b>42956</b>	<b>-567</b>	<b>-1.3</b>	
SR	AP-TRANSCO	261	241	-20	8089	7472	-597	-7.6	11500	11329	-171	-1.5
	KPTCL	175	163	-12	5438	5055	-371	-7.0	9313	8499	-814	-8.7
	KSEB	63	62	-1	1952	1911	-40	-2.1	3557	3399	-158	-4.4
	TNEB	275	265	-10	8518	8208	-300	-3.6	13186	12991	-195	-1.5
	PONDICHERRY	7	7	0	205	204	-1	-0.5	348	348	0	0.0
<b>TOTAL</b>	<b>779</b>	<b>737</b>	<b>-42</b>	<b>24163</b>	<b>22851</b>	<b>-1270</b>	<b>-5.4</b>	<b>37213</b>	<b>35342</b>	<b>-1871</b>	<b>-5.0</b>	
ER	Bihar	45	44	0	1387	1373	-14	-1.0	2700	2476	-224	-8.3
	JSEB	23	20	-3	705	615	-87	-12.8	1100	1011	-89	-8.1
	DVC	52	57	5	1615	1771	151	9.7	2605	2647	42	1.6
	Odisha	73	76	3	2254	2362	105	4.8	3700	3850	150	4.1
	West Bengal	138	144	7	4269	4473	197	4.8	7340	7766	426	5.8
<b>TOTAL</b>	<b>330</b>	<b>342</b>	<b>12</b>	<b>10230</b>	<b>10594</b>	<b>352</b>	<b>3.6</b>	<b>17018</b>	<b>17437</b>	<b>419</b>	<b>2.5</b>	
NER	Arunachal Pradesh	2	1	0	48	46	-3	-5.4	115	111	-3	-3.0
	Assam	21	19	-2	655	593	-60	-9.5	1332	1212	-120	-9.0
	Manipur	2	1	0	48	46	-3	-6.0	110	109	0	-0.4
	MeSEB	4	4	-1	134	115	-18	-14.1	299	296	-3	-0.9
	Mizoram	1	1	0	34	32	-2	-6.7	75	73	-2	-2.5
	Nagaland	2	1	0	48	46	-2	-4.8	105	104	-1	-0.9
	Tripura	3	3	0	99	92	-7	-7.0	236	233	-3	-1.2
<b>TOTAL</b>	<b>34</b>	<b>31</b>	<b>-3</b>	<b>1067</b>	<b>968</b>	<b>-95</b>	<b>-9.2</b>	<b>2270</b>	<b>2138</b>	<b>-132</b>	<b>-5.8</b>	
<b>ALL INDIA</b>		<b>3005</b>	<b>2889</b>	<b>-92</b>	<b>93150</b>	<b>89567</b>	<b>-2751</b>	<b>-3.8</b>	<b>144171</b>	<b>129575</b>	<b>-14596</b>	<b>-10.1</b>



### 9. ENERGY COMPARISON OF MAY 2014 Vs MAY 2013

REGION	STATE	Energy Requirement (MU)					Energy Met (MU)				
		May-13	May-14	Difference	% Change	Average MU/day for May-14	May-13	May-14	Difference	% Change	Average for MU/day May-14
NR	Chandigarh	164	152	-12	-7	4.9	164	152	-12	-7	4.9
	Delhi	2943	2795	-149	-5	90.2	2942	2794	-149	-5	90.1
	Haryana	3966	3706	-260	-7	119.5	3956	3686	-269	-7	118.9
	H.P.	739	745	7	1	24.0	733	744	11	1	24.0
	J&K	1300	1342	42	3	43.3	967	1074	107	11	34.6
	Punjab	4293	3703	-590	-14	119.5	4274	3679	-595	-14	118.7
	Rajasthan	4963	5286	324	7	170.5	4956	5277	321	6	170.2
	U.P.	8799	9177	378	4	296.0	7660	8069	410	5	260.3
	Uttarakhand	1089	1026	-63	-6	33.1	1048	1011	-37	-4	32.6
	NFF/Railway	70	68	-2	-2	2.2	70	68	-2	-2	2.2
	<b>TOTAL</b>	<b>28324</b>	<b>28000</b>	<b>-325</b>	<b>-1</b>	<b>903.2</b>	<b>26769</b>	<b>26554</b>	<b>-215</b>	<b>-1</b>	<b>856.6</b>
WR	Gujarat	8201	8721	519	6	281.3	8189	8714	525	6	281.1
	Madhya Pradesh	4378	4763	386	9	153.7	4377	4740	363	8	152.9
	Chhattisgarh	2157	2165	8	0	69.8	2142	2150	9	0	69.4
	Maharashtra	11644	12798	1154	10	412.8	11417	12497	1080	9	403.1
	Goa	243	275	32	13	8.9	242	273	31	13	8.8
	D&D	177	179	1	1	5.8	177	179	2	1	5.8
	DNH	426	474	49	12	15.3	425	473	48	11	15.3
	ESIL		315			10.2		314			10.1
	<b>TOTAL</b>	<b>27226</b>	<b>29690</b>	<b>2464</b>	<b>9</b>	<b>957.7</b>	<b>26971</b>	<b>29340</b>	<b>2370</b>	<b>9</b>	<b>946.5</b>
SR	AP-TRANSCO	8800	8089	-711	-8	260.9	7437	7472	35	0	241.0
	KPTCL	5472	5438	-34	-1	175.4	4796	5055	259	5	163.1
	KSEB	1903	1952	49	3	63.0	1770	1911	141	8	61.6
	TNEB	8528	8518	-10	0	274.8	7643	8208	565	7	264.8
	PONDY	201	205	4	2	6.6	199	204	5	3	6.6
		<b>TOTAL</b>	<b>24903</b>	<b>24163</b>	<b>-740</b>	<b>-3</b>	<b>779.5</b>	<b>21845</b>	<b>22851</b>	<b>1006</b>	<b>5</b>
ER	Bihar	1360	1387	27	2	44.7	1170	1373	203	17	44.3
	JSEB	730	705	-25	-3	22.7	634	615	-19	-3	19.8
	DVC	1610	1615	5	0	52.1	1726	1771	45	3	57.1
	Odisha	2260	2254	-6	0	72.7	2111	2362	251	12	76.2
	West Bengal	4409	4269	-140	-3	137.7	4021	4473	452	11	144.3
	<b>TOTAL</b>	<b>10369</b>	<b>10230</b>	<b>-139</b>	<b>-1</b>	<b>330.0</b>	<b>9662</b>	<b>10594</b>	<b>932</b>	<b>10</b>	<b>341.7</b>
NER	Arunachal Pradesh	43	48	6	13	1.6	40	46	6	14	1.5
	Assam	596	655	59	10	21.1	551	593	42	8	19.1
	Manipur	46	48	2	4	1.6	44	46	2	4	1.5
	MeSEB	142	134	-8	-6	4.3	120	115	-5	-4	3.7
	Mizoram	33	34	1	3	1.1	31	32	1	3	1.0
	Nagaland	47	48	1	3	1.5	44	46	1	3	1.5
	Tripura	87	99	12	14	3.2	81	92	11	14	3.0
	<b>TOTAL</b>	<b>994</b>	<b>1067</b>	<b>73</b>	<b>7</b>	<b>34.4</b>	<b>911</b>	<b>968</b>	<b>57</b>	<b>6</b>	<b>31.2</b>
<b>ALL INDIA</b>		<b>91816</b>	<b>93150</b>	<b>1333</b>	<b>1</b>	<b>3004.8</b>	<b>86158</b>	<b>89567</b>	<b>4149</b>	<b>5</b>	<b>2889.3</b>

**10. DEMAND COMPARISON OF MAY 2014 Vs MAY 2013**

REGION	STATE	Peak Requirement (MW)				Peak Met (MW)			
		May-13	May-14	Difference	% Change	May-13	May-14	Difference	% Change
NR	Chandigarh	327	300	-27	-8.3	327	300	-27	-8.3
	Delhi	5315	5358	43	0.8	5315	5338	23	0.4
	Haryana	6363	6173	-190	-3.0	6363	6749	386	6.1
	H.P.	1222	1173	-49	-4.0	1222	1173	-49	-4.0
	J&K	2250	2384	134	6.0	1678	1907	229	13.6
	Punjab	7777	6910	-867	-11.1	7777	6910	-867	-11.1
	Rajasthan	7755	8860	1105	14.2	7753	8727	974	12.6
	U.P.	12725	15506	2781	21.9	12115	11821	-294	-2.4
	Uttarakhand	1635	1791	156	9.5	1635	1716	81	5.0
	NFF/Railway	104	100	-4	-3.8	104	100	-4	-3.8
TOTAL	42620	44147	1527	3.6	40738	41007	269	0.7	
WR	Gujarat	12153	13466	1313	10.8	12111	13471	1360	11.2
	Madhya Pradesh	7234	7215	-19	-0.3	7260	7159	-101	-1.4
	Chhattisgarh	3355	3340	-15	-0.4	3254	3336	82	2.5
	Maharashtra	17862	20137	2275	12.7	17199	19326	2127	12.4
	Goa	481	438	-43	-8.9	441	438	-3	-0.7
	D&D	273	288	15	5.5	248	288	40	16.1
	DNH	606	687	81	13.4	583	687	104	17.8
	ESIL		606				606		
TOTAL	39597	43523	3926	9.9	38760	42956	4196	10.8	
SR	AP-TRANSCO	12060	11500	-560	-4.6	11369	11329	-40	-0.4
	KPTCL	9455	9313	-142	-1.5	7908	8499	591	7.5
	KSEB	3559	3557	-2	-0.1	3093	3399	306	9.9
	TNEB	12128	13186	1058	8.7	12035	12991	956	7.9
	PONDY	333	348	15	4.5	332	348	16	4.8
	TOTAL	37670	37213	-457	-1.2	32927	35342	2415	7.3
ER	Bihar	2700	2700	0	0.0	1852	2476	624	33.7
	JSEB	1150	1100	-50	-4.3	1021	1011	-10	-1.0
	DVC	2600	2605	5	0.2	3600	2647	-953	-26.5
	Odisha	3700	3700	0	0.0	3653	3850	197	5.4
	West Bengal	7448	7340	-108	-1.5	7333	7766	433	5.9
	TOTAL	17163	17018	-145	-0.8	15826	17437	1611	10.2
NER	Arunachal Pradesh	105	115	10	9.8	100	111	11	11.3
	Assam	1249	1332	83	6.6	1102	1212	110	10.0
	Manipur	122	110	-12	-10.0	113	109	-4	-3.4
	MeSEB	289	299	10	3.3	286	296	10	3.5
	Mizoram	64	75	10	16.1	62	73	11	17.7
	Nagaland	102	105	3	3.2	100	104	4	4.0
	Tripura	216	236	20	9.1	212	233	21	9.9
	TOTAL	2147	2270	124	5.8	1975	2138	163	8.3
<b>ALL INDIA</b>		<b>139197</b>	<b>144171</b>	<b>4975</b>	<b>3.6</b>	<b>123697</b>	<b>129575</b>	<b>5878</b>	<b>5</b>

**11. SCHEDULE AND DRAWAL OF CONSTITUENTS - MAY 2014**

REGION	STATE	SCHEDULE (MU)	ACTUAL DRAWAL (MU)	Over drawal(+)/ Under Drawal(-) (MU)	% OD/UD	SCHEDULE (MU/DAY)	ACTUAL DRAWAL (MU/DAY)	Over drawal(+)/ Under Drawal(-) (MU/DAY)
NR	Chandigarh	145	164	18.6	12.8	4.7	5.3	0.6
	Delhi	2224	2152	-72.1	-3.2	71.7	69.4	-2.3
	Haryana	2583	2621	38.0	1.5	83.3	84.5	1.2
	H.P.	200	213	13.4	6.7	6.5	6.9	0.4
	J&K	546	575	29.1	5.3	17.6	18.5	0.9
	Punjab	2282	2382	99.9	4.4	73.6	76.8	3.2
	Rajasthan	1480	1486	5.9	0.4	47.8	47.9	0.2
	U.P.	3758	3658	-99.7	-2.7	121.2	118.0	-3.2
	Uttarakhand	620	623	2.6	0.4	20.0	20.1	0.1
	NFF/Railway	50	69	19.5	39.1	1.6	2.2	0.6
WR	Gujarat	1398	1382	-16.1	-1.2	45.1	44.6	-0.5
	Madhya Pradesh	2445	2415	-30.1	-1.2	78.9	77.9	-1.0
	Maharashtra	3794	3882	87.9	2.3	122.4	125.2	2.8
	Chhattisgarh	603	572	-30.8	-5.1	19.5	18.5	-1.0
	Goa	255	259	3.5	1.4	8.2	8.4	0.1
	D&D	179	179	-0.8	-0.5	5.8	5.8	0.0
	D&NH	470	473	3.4	0.7	15.2	15.3	0.1
	ESIL	321	314	-7.2	-2.2	10.4	10.1	-0.2
SR	APTRANSCO	2705	2776	70.9	2.6	87.3	89.5	2.3
	KPTCL	758	798	40.6	5.4	24.4	25.8	1.3
	KSEB	1064	1113	48.3	4.5	34.3	35.9	1.6
	TNEB	2629	2641	12.0	0.5	84.8	85.2	0.4
	PONDICHERRY	209	204	-5.1	-2.5	6.7	6.6	-0.2
	Goa(SR)	54	55	0.8	1.5	1.7	1.8	0.0
ER	Bihar	1296	1281	-15.3	-1.2	41.8	41.3	-0.5
	JSEB	342	325	-17.6	-5.1	11.0	10.5	-0.6
	DVC	-384	-381	2.4	-0.6	-12.4	-12.3	0.1
	GRIDCO	664	671	6.4	1.0	21.4	21.6	0.2
	WBSEB	1050	1141	91.4	8.7	33.9	36.8	2.9
	Sikkim	39	30	-8.3	-21.5	1.2	1.0	-0.3
NER	Arunachal Pradesh	42	51	8.2	19.3	1.4	1.6	0.3
	Assam	356	385	29.2	8.2	11.5	12.4	0.9
	Manipur	40	41	1.1	2.8	1.3	1.3	0.0
	MeSEB	52	57	5.1	9.8	1.7	1.8	0.2
	Mizoram	30	34	4.6	15.5	1.0	1.1	0.1
	Nagaland	43	51	8.1	18.8	1.4	1.6	0.3
	Tripura	26	35	9.3	36.5	0.8	1.1	0.3

## 12. INTER REGIONAL EXCHANGES 2014-15

	April'14	May'14	Fin. Year 2014-15 Till May 2014
Name of Line			
<b>Import of NR from WR (WR-NR)</b>			
WR - NR 765 kV Gwalior - Agra D/C	1131.41	1094.02	2225.43
WR - NR HVDC Vindhyachal	226.93	146.02	372.95
WR - NR 400 kV Zerda Kankroli	0.00	0.00	0.00
WR - NR 400 kV Zerda Bhinmal	0.00	0.00	0.00
WR - NR 220 kV Badod - Kota/ Modak	0.00	0.00	0.00
WR - NR 220 kV Auraiya - Malanpur/Mehgaon	0.00	0.00	0.00
WR - NR HVDC Mundra - Mohindergarh	1435.93	1407.11	2843.04
<b>Total WR - NR</b>	<b>2794.27</b>	<b>2647.15</b>	<b>5441.42</b>
<b>Import of NR from ER (ER-NR)</b>			
ER - NR 765 kV Sasaram - Fatehpur	15.63	29.42	45.05
ER - WR 765 kV Gaya - Fatehpur	0.00	5.45	5.45
ER - WR 400 kV Pusauli - Balia	1.80	0.00	1.80
ER-NR 400 kV Patna - Balia 2xD/C	199.41	188.18	387.58
ER - NR 400 kV Muzaffarpur - Gorakhpur D/C	60.87	153.36	214.23
ER - NR 400 kV Biharshariff - Balia D/C	73.20	134.72	207.92
ER - NR HVDC Sasaram ( Bypass)	214.12	275.04	489.16
ER - NR 220 kV Pusauli - Sahupuri	112.59	109.26	221.84
ER - NR 132 kV Sahupuri - Karamnasa	0.00	0.00	0.00
ER - NR 132 kV Rihand - Son Nagar	0.00	0.00	0.00
<b>Total NR - WR</b>	<b>677.62</b>	<b>895.41</b>	<b>1573.03</b>
<b>Export of NR to WR (NR-WR)</b>			
NR - WR 765 kV Gwalior - Agra D/C	0.00	0.00	0.00
NR - WR HVDC Vindhyachal	7.75	36.56	44.30
NR - WR 400 kV Zerda Kankroli	180.30	135.80	316.10
NR - WR 400 kV Zerda Bhinmal	133.65	98.67	232.32
NR - WR 220 kV Badod - Kota/ Modak	88.03	68.11	156.15
NR - WR 220 kV Auraiya - Malanpur/Mehgaon	26.51	28.54	55.05
NR - WR HVDC Mundra - Mohindergarh	0.00	0.00	0.00
<b>Total NR - WR</b>	<b>436.24</b>	<b>367.68</b>	<b>803.92</b>
<b>Export of NR to ER (NR-ER)</b>			
NR - ER 765 kV Sasaram - Fatehpur	39.73	10.26	49.99
NR - ER 765 kV Gaya - Fatehpur	50.11	22.91	73.02
NR - ER 400 kV Pusauli - Balia	66.02	53.18	119.20
NR - ER 400 kV Patna - Balia 2xD/C	0.00	0.00	0.00
NR - ER 400 kV Muzaffarpur - Gorakhpur D/C	5.12	1.26	6.38
NR - ER 400 kV Biharshariff - Balia D/C	2.38	0.00	2.38
NR - ER HVDC Sasaram ( Bypass)	25.06	0.70	25.77
NR - ER 220 kV Pusauli - Sahupuri	0.00	0.03	0.03
NR - ER 132 kV Sahupuri - Karamnasa	0.00	0.94	0.94
NR - ER 132 kV Rihand - Son Nagar	12.54	7.36	19.90
<b>Total NR - ER</b>	<b>200.97</b>	<b>96.65</b>	<b>297.61</b>

## 12. INTER REGIONAL EXCHANGES 2014-15

	April'14	May'14	Fin. Year 2014-15 Till May 2014
Name of Line			
<b>Export of WR to ER (WR-ER)</b>			
WR - ER 765 kV Ranchi - Dharamjaygarh	4.29	72.09	76.38
WR - ER 400 kV Sipat - Ranchi D/C	5.57	97.73	103.30
WR - ER 400 kV Raigarh - Sterlite D/C	0.00	0.00	0.00
WR - ER 400 kV Raigarh - Jharsuguda D/C	2.20	78.59	80.79
WR - ER 220 kV Korba - Budhipadar D/C	0.19	10.23	10.42
WR - ER 220 kV Raigarh - Budhipadar	0.00	0.49	0.49
<b>Total WR - ER</b>	<b>7.95</b>	<b>259.13</b>	<b>267.09</b>
<b>Import of WR from ER (ER - WR)</b>			
ER - WR 765 kV Ranchi - Dharamjaygarh	0.00	0.73	0.73
ER - WR 400 kV Sipat - Ranchi D/C	2.42	0.00	2.42
ER - WR 400 kV Raigarh - Sterlite D/C	115.86	115.02	230.88
ER - WR 400 kV Raigarh - Jharsuguda D/C	0.00	0.00	0.00
ER - WR 220 kV Korba - Budhipadar D/C	4.66	9.39	14.05
ER - WR 220 kV Raigarh - Budhipadar	70.98	63.40	134.38
<b>Total ER - WR</b>	<b>193.92</b>	<b>188.55</b>	<b>382.47</b>
<b>Export of ER to NER</b>			
ER - NER 400 kV Binaguri - Bongaigaon D/C	231.89	201.50	433.39
ER - NER 220 kV Birpara - Salakati D/C	41.64	59.03	100.67
<b>Total ER - NER</b>	<b>273.52</b>	<b>260.53</b>	<b>534.05</b>
<b>Import of ER from NER (NER - ER)</b>			
NER - ER 400 kV Binaguri - Bongaigaon D/C	0.00	0.00	0.00
NER - ER 220 kV Birpara - Salakati D/C	0.00	0.00	0.00
<b>Total NER - ER</b>	<b>0.00</b>	<b>0.00</b>	<b>0.00</b>
<b>Export of ER to SR (ER - SR)</b>	0.00		0.00
ER - SR HVDC Gazuwaka	534.56	526.50	1061.06
ER - SR HVDC Talchar - Kolar	1419.85	1299.16	2719.01
ER - SR 220 kV Balimela - Upper Sileru*	0.38	0.00	0.38
<b>Total ER - SR</b>	<b>1954.41</b>	<b>1825.70</b>	<b>3780.11</b>
<b>Import of ER from SR (SR - ER)</b>			
SR - ER HVDC Gazuwaka	0.00	0.00	0.00
SR - ER HVDC Talchar - Kolar	0.00	0.00	0.00
<b>Total SR - ER</b>	<b>0.00</b>	<b>0.00</b>	<b>0.00</b>
<b>Export of WR to SR (WR-SR)</b>			
WR - SR HVDC Bhadravati	691.96	692.54	1384.50
WR - SR 765 kV Sholapur - Raichur	78.84	68.83	147.67
<b>Total WR - SR</b>	<b>770.80</b>	<b>761.36</b>	<b>1532.17</b>
<b>Import of WR from SR (SR - WR)</b>			
SR - WR HVDC Bhadravati	0.00	0.00	0.00
SR - WR 765 kV Raichur - Sholapur	35.99	47.17	83.15
<b>Total SR - WR</b>	<b>35.99</b>	<b>47.17</b>	<b>83.15</b>
<b>TOTAL ALL INDIA</b>	<b>7346</b>	<b>7349</b>	<b>14695</b>

Date	12.1 Import of NR from WR & ER during May 2014																		
	Import of NR from WR (WR-NR)								Import of NR from ER (ER-NR)										
	WR - NR 765 kV Gwalior - Agra D/C	WR - NR HVDC V'chal	WR - NR 400 kV Zerda- Kankroli	WR - NR 400 kV Zerda- Bhinmal	WR - NR 220 kV Badod - Kota / Modak	WR - NR 220 kV Auraiya - Malanpur / Mehgaon	WR - NR HVDC Mundra - M'garh	Total WR - NR	ER - NR 765 kV Sasaram - Fatehpur	ER - WR 765 kV Gaya - Fatehpur	ER - WR 400 kV Pusauli - Balua	ER-NR 400 kV Patna - Balua 2xD/C	ER - NR 400 kV Muzaffarpur - G'pur D/C	ER - NR 400 kV B'shariff - Balua D/C	ER - NR HVDC Sasaram (Byepass)	ER - NR 220 kV Pusauli - Sahupuri	ER - NR 132 kV Sahupuri - K'nasa	ER - NR 132 kV Rihand - Son Nagar	Total NR -WR
1-May-14	39.41	1.59	0.00	0.00	0.00	0.00	48.09	89.09	0.00	0.00	0.00	6.96	3.80	4.26	9.66	3.86	0.00	0.00	28.54
2-May-14	36.47	3.60	0.00	0.00	0.00	0.00	48.73	88.80	0.96	0.00	0.00	6.71	5.35	3.46	9.60	4.61	0.00	0.00	30.69
3-May-14	35.84	6.77	0.00	0.00	0.00	0.00	48.33	90.94	1.56	0.45	0.00	7.61	6.76	4.09	9.76	3.78	0.00	0.00	34.00
4-May-14	31.10	1.65	0.00	0.00	0.00	0.00	48.33	81.08	0.46	0.00	0.00	6.56	5.62	3.17	9.63	3.80	0.00	0.00	29.23
5-May-14	32.23	0.52	0.00	0.00	0.00	0.00	48.33	81.08	1.57	0.00	0.00	6.43	5.29	4.25	5.96	3.40	0.00	0.00	26.90
6-May-14	29.66	3.63	0.00	0.00	0.00	0.00	45.07	78.36	2.02	0.25	0.00	6.06	6.13	3.67	5.96	3.66	0.00	0.00	27.74
7-May-14	34.25	3.95	0.00	0.00	0.00	0.00	41.60	79.80	1.13	0.18	0.00	6.10	6.09	3.89	7.28	3.60	0.00	0.00	28.27
8-May-14	29.27	5.94	0.00	0.00	0.00	0.00	44.09	79.29	0.65	0.00	0.00	4.63	4.46	2.77	7.20	3.63	0.00	0.00	23.34
9-May-14	37.88	2.61	0.00	0.00	0.00	0.00	41.16	81.65	2.61	1.01	0.00	6.57	7.23	4.40	7.25	4.12	0.00	0.00	33.19
10-May-14	35.65	9.53	0.00	0.00	0.00	0.00	39.77	84.95	1.93	0.58	0.00	6.84	6.53	4.53	9.65	4.22	0.00	0.00	34.28
11-May-14	32.49	7.57	0.00	0.00	0.00	0.00	38.23	78.29	0.00	0.00	0.00	5.64	5.43	3.56	9.59	4.35	0.00	0.00	28.56
12-May-14	29.15	2.43	0.00	0.00	0.00	0.00	48.32	79.90	0.03	0.00	0.00	5.40	6.19	3.58	9.65	4.51	0.00	0.00	29.36
13-May-14	16.17	0.03	0.00	0.00	0.00	0.00	40.14	56.34	0.00	0.00	0.00	3.08	2.39	1.46	9.62	3.62	0.00	0.00	20.17
14-May-14	25.48	0.78	0.00	0.00	0.00	0.00	35.00	61.26	0.00	0.00	0.00	3.88	4.36	2.19	9.80	3.10	0.00	0.00	23.33
15-May-14	32.46	3.95	0.00	0.00	0.00	0.00	40.92	77.33	1.04	0.00	0.00	4.80	4.59	2.78	9.64	3.02	0.00	0.00	25.87
16-May-14	38.29	5.46	0.00	0.00	0.00	0.00	48.33	92.07	0.00	0.00	0.00	5.49	3.98	3.46	9.63	3.24	0.00	0.00	25.79
17-May-14	37.15	3.86	0.00	0.00	0.00	0.00	48.32	89.33	0.00	0.00	0.00	5.85	2.74	4.03	9.75	3.65	0.00	0.00	26.02
18-May-14	36.74	5.97	0.00	0.00	0.00	0.00	48.32	91.03	0.00	0.00	0.00	5.10	2.26	3.46	9.69	3.48	0.00	0.00	24.00
19-May-14	34.68	7.92	0.00	0.00	0.00	0.00	48.32	90.93	0.00	0.00	0.00	6.81	1.49	4.58	9.67	3.37	0.00	0.00	25.92
20-May-14	36.71	5.56	0.00	0.00	0.00	0.00	48.32	90.59	0.00	0.00	0.00	5.79	0.48	3.39	9.48	3.24	0.00	0.00	22.38
21-May-14	42.22	5.85	0.00	0.00	0.00	0.00	48.32	96.39	0.00	0.00	0.00	8.77	4.95	6.01	9.57	3.49	0.00	0.00	32.79
22-May-14	40.72	6.77	0.00	0.00	0.00	0.00	48.32	95.81	0.00	0.00	0.00	7.81	3.61	5.77	9.54	3.09	0.00	0.00	29.82
23-May-14	37.17	7.55	0.00	0.00	0.00	0.00	48.33	93.06	0.00	0.00	0.00	4.19	2.04	2.27	9.67	4.41	0.00	0.00	22.58
24-May-14	34.03	6.27	0.00	0.00	0.00	0.00	48.33	88.63	0.00	0.00	0.00	4.17	2.05	1.80	9.72	4.23	0.00	0.00	21.97
25-May-14	37.56	6.74	0.00	0.00	0.00	0.00	47.57	91.87	0.18	0.00	0.00	2.15	2.71	2.24	9.69	4.10	0.00	0.00	21.07
26-May-14	39.86	7.93	0.00	0.00	0.00	0.00	48.36	96.15	1.47	0.73	0.00	1.74	5.66	4.82	9.65	4.22	0.00	0.00	28.29
27-May-14	49.36	0.00	0.00	0.00	0.00	0.00	48.30	97.66	4.30	0.00	0.00	9.76	0.00	8.49	0.00	0.00	0.00	0.00	22.55
28-May-14	37.84	8.53	0.00	0.00	0.00	0.00	48.35	94.72	2.35	1.13	0.00	8.54	9.16	8.57	9.63	3.55	0.00	0.00	42.93
29-May-14	37.84	8.53	0.00	0.00	0.00	0.00	48.35	94.72	2.35	1.13	0.00	8.54	9.16	8.57	9.63	3.55	0.00	0.00	42.93
30-May-14	37.41	2.24	0.00	0.00	0.00	0.00	35.61	75.26	0.46	0.00	0.00	8.64	10.89	8.98	9.76	4.36	0.00	0.00	43.08
31-May-14	38.94	2.29	0.00	0.00	0.00	0.00	39.55	80.79	4.36	0.00	0.00	7.58	11.95	6.22	9.72	0.00	0.00	0.00	39.83
Total May'14	1094.02	146.02	0.00	0.00	0.00	0.00	1407.11	2647.15	29.42	5.45	0.00	188.18	153.36	134.72	275.04	109.26	0.00	0.00	895.41

## 12.2 Export of NR to WR & ER during May 2014

Date	Export of NR to WR (NR- WR)																			Export of NR to ER (NR- ER)									
	WR - NR 765 kV Gwalior - Agra D/C	WR - NR HVDC V'chal	WR - NR 400 kV Zerda- Kankroli	WR - NR 400 kV Zerda- Bhinmal	WR - NR 220 kV Badod - Kota / Modak	WR - NR 220 kV Auraiya - Malanpur / Mehgaon	WR - NR HVDC Mundra - M'garh	Total WR - NR	ER - NR 765 kV Sasaram - Fatehpur	ER - WR 765 kV Gaya - Fatehpur	ER - WR 400 kV Pusauli - Balua	ER-NR 400 kV Patna - Balua 2xD/C	ER - NR 400 kV Muzaffarpur - G'pur D/C	ER - NR 400 kV B'shariff - Balua D/C	ER - NR HVDC Sasaram (Byepass)	ER - NR 220 kV Pusauli - Sahupuri	ER - NR 132 kV Sahupuri - K'nasa	ER - NR 132 kV Rihand - Son Nagar	Total NR -WR										
	1-May-14	0.00	1.92	3.39	1.83	2.09	0.62	0.00	9.85	0.03	0.80	1.57	0.00	0.00	0.00	0.00	0.03	0.00	0.85	3.28									
2-May-14	0.00	0.61	4.88	3.32	3.46	0.57	0.00	12.84	0.00	0.07	1.91	0.00	0.00	0.00	0.00	0.00	0.00	0.85	2.83										
3-May-14	0.00	0.00	5.93	4.36	4.11	0.76	0.00	15.16	0.00	0.00	1.86	0.00	0.00	0.00	0.00	0.00	0.00	0.00	1.86										
4-May-14	0.00	1.82	5.80	3.89	4.02	0.89	0.00	16.42	0.00	0.51	1.78	0.00	0.00	0.00	0.00	0.00	0.00	0.00	2.29										
5-May-14	0.00	5.23	6.52	4.76	3.94	0.68	0.00	21.14	0.00	0.68	1.00	0.00	0.00	0.00	0.00	0.00	0.00	0.00	1.68										
6-May-14	0.00	0.63	6.40	4.38	4.04	1.04	0.00	16.49	0.00	0.00	1.79	0.00	0.00	0.00	0.00	0.00	0.00	0.00	1.79										
7-May-14	0.00	2.23	5.95	4.08	3.72	0.77	0.00	16.75	0.00	0.00	1.45	0.00	0.00	0.00	0.00	0.00	0.00	0.00	1.45										
8-May-14	0.00	2.30	6.29	4.51	2.84	0.93	0.00	16.86	0.00	0.35	1.67	0.00	0.00	0.00	0.00	0.00	0.00	0.00	2.02										
9-May-14	0.00	0.22	2.82	0.79	0.70	0.67	0.00	5.20	0.00	0.00	1.49	0.00	0.00	0.00	0.00	0.00	0.00	0.30	1.79										
10-May-14	0.00	0.00	3.79	2.44	1.28	0.86	0.00	8.37	0.00	1.74	1.74	0.00	0.00	0.00	0.00	0.00	0.00	0.31	3.80										
11-May-14	0.00	0.04	3.72	2.54	1.27	0.90	0.00	8.47	0.17	1.22	1.68	0.00	0.00	0.00	0.00	0.00	0.00	0.00	3.07										
12-May-14	0.00	0.00	5.38	4.13	1.58	1.03	0.00	12.12	0.00	0.76	1.80	0.00	0.00	0.00	0.00	0.00	0.00	0.00	2.56										
13-May-14	0.00	5.56	5.24	4.09	1.94	2.17	0.00	18.99	1.88	2.25	2.08	0.00	0.00	0.00	0.00	0.00	0.00	0.00	6.21										
14-May-14	0.00	9.02	4.09	2.60	2.13	1.08	0.00	18.91	0.01	0.67	1.89	0.00	0.00	0.00	0.00	0.00	0.00	0.00	2.57										
15-May-14	0.00	0.66	2.77	2.00	1.46	0.90	0.00	7.78	0.00	0.01	2.09	0.00	0.00	0.00	0.00	0.00	0.00	0.00	2.09										
16-May-14	0.00	0.00	2.89	2.26	1.42	0.75	0.00	7.32	0.50	0.61	1.84	0.00	0.00	0.00	0.00	0.00	0.00	0.65	3.60										
17-May-14	0.00	0.36	4.69	3.59	1.98	1.00	0.00	11.62	0.98	1.73	1.54	0.00	0.00	0.00	0.00	0.00	0.00	0.62	4.87										
18-May-14	0.00	0.00	3.27	2.22	1.40	0.52	0.00	7.42	0.38	0.94	1.74	0.00	0.00	0.00	0.00	0.00	0.00	0.66	3.72										
19-May-14	0.00	0.00	3.72	2.76	1.60	0.64	0.00	8.72	1.37	1.78	1.19	0.00	0.00	0.00	0.00	0.00	0.00	0.00	4.33										
20-May-14	0.00	0.00	3.16	2.00	1.46	1.08	0.00	7.70	1.39	1.62	1.44	0.00	0.00	0.00	0.00	0.00	0.00	0.00	4.45										
21-May-14	0.00	0.00	1.85	1.97	1.24	0.61	0.00	5.67	0.28	0.98	0.95	0.00	0.00	0.00	0.00	0.00	0.00	0.00	2.20										
22-May-14	0.00	0.00	3.91	2.96	0.86	0.58	0.00	8.31	0.27	0.99	0.95	0.00	0.00	0.00	0.00	0.00	0.00	0.00	2.21										
23-May-14	0.00	0.07	5.12	3.84	1.87	0.92	0.00	11.81	2.05	2.38	1.90	0.00	0.00	0.00	0.00	0.00	0.81	7.14											
24-May-14	0.00	0.00	5.97	4.32	2.25	0.89	0.00	13.43	0.96	1.83	2.73	0.00	0.00	0.00	0.00	0.00	0.00	0.86	6.38										
25-May-14	0.00	0.04	5.50	3.87	2.26	0.76	0.00	12.43	0.00	0.85	2.14	0.00	0.00	0.00	0.00	0.00	0.00	0.86	3.85										
26-May-14	0.00	0.00	5.24	3.66	1.68	0.90	0.00	11.48	0.00	0.00	1.42	0.00	0.00	0.00	0.00	0.00	0.00	0.60	2.02										
27-May-14	0.00	0.00	0.00	2.20	2.79	0.80	0.00	5.79	0.00	0.00	6.00	0.00	1.26	0.00	0.70	0.00	0.94	0.00	8.91										
28-May-14	0.00	0.00	5.24	4.32	2.06	1.12	0.00	12.74	0.00	0.00	0.99	0.00	0.00	0.00	0.00	0.00	0.00	0.00	0.99										
29-May-14	0.00	0.00	5.24	4.32	2.06	1.12	0.00	12.74	0.00	0.00	0.99	0.00	0.00	0.00	0.00	0.00	0.00	0.00	0.99										
30-May-14	0.00	4.51	4.23	3.08	2.58	2.58	0.00	16.98	0.00	0.15	0.42	0.00	0.00	0.00	0.00	0.00	0.00	0.00	0.57										
31-May-14	0.00	1.35	2.82	1.58	2.03	0.40	0.00	8.17	0.00	0.00	1.16	0.00	0.00	0.00	0.00	0.00	0.00	0.00	1.16										
<b>Total May'14</b>	<b>0.00</b>	<b>36.56</b>	<b>135.80</b>	<b>98.67</b>	<b>68.11</b>	<b>28.54</b>	<b>0.00</b>	<b>367.68</b>	<b>10.26</b>	<b>22.91</b>	<b>53.18</b>	<b>0.00</b>	<b>1.26</b>	<b>0.00</b>	<b>0.70</b>	<b>0.03</b>	<b>0.94</b>	<b>7.36</b>	<b>96.65</b>										

**12.3 Import - Export of ER with WR & NER during May' 2014**

Date	Export of WR to ER (WR-ER)							Import of WR from ER (ER - WR)							Export of ER to NER (ER - NER)			Import of ER from NER (NER - ER)		
	WR - ER 765 kV Dharamjaygarh - Ranchi D/C	WR - ER 400 kV Sipat - Ranchi D/C	WR - ER 400 kV Raigarh - Sterlite D/C	WR - ER 400 kV Raigarh - Jharsuguda D/C	WR - ER 220 kV Korba - Budhipadar D/C	WR - ER 220 kV Raigarh - Budhipadar	Total WR - ER	WR - ER 765 kV Dharamjaygarh - Ranchi D/C	ER - WR 400 kV Sipat - Ranchi D/C	ER - WR 400 kV Raigarh - Sterlite D/C	ER - WR 400 kV Raigarh - Jharsuguda D/C	ER - WR 220 kV Korba - Budhipadar D/C	ER - WR 220 kV Raigarh - Budhipadar	Total ER - WR	ER - NER 400 kV Binaguri - Bongaigaon D/C	ER - NER 220 kV Birpara - Salakati D/C	Total ER - NER	NER - ER 400 kV Binaguri - Bongaigaon D/C	NER - ER 220 kV Birpara - Salakati D/C	Total NER - ER
1-May-14	3.21	4.67	0.00	2.56	0.00	0.00	10.44	0.00	0.00	4.22	0.00	0.03	2.75	7.00	8.22	1.86	10.08	0.00	0.00	0.00
2-May-14	2.60	2.81	0.00	2.12	0.00	0.00	7.53	0.00	0.00	4.93	0.00	0.35	2.90	8.18	9.80	2.69	12.49	0.00	0.00	0.00
3-May-14	0.79	1.23	0.00	0.28	0.19	0.00	2.49	0.00	0.00	6.74	0.00	0.52	2.77	10.03	7.33	1.94	9.28	0.00	0.00	0.00
4-May-14	0.00	0.79	0.00	0.16	0.01	0.00	0.96	0.73	0.00	6.30	0.00	0.66	2.71	10.41	3.75	0.92	4.67	0.00	0.00	0.00
5-May-14	2.21	1.87	0.00	1.53	0.47	0.00	6.08	0.00	0.00	4.55	0.00	0.24	1.84	6.64	4.32	1.15	5.47	0.00	0.00	0.00
6-May-14	1.47	2.36	0.00	1.05	0.35	0.00	5.23	0.00	0.00	4.93	0.00	0.16	2.07	7.16	5.45	1.42	6.87	0.00	0.00	0.00
7-May-14	2.91	3.48	0.00	1.93	0.63	0.00	8.94	0.00	0.00	3.08	0.00	0.00	2.29	5.37	4.47	1.25	5.71	0.00	0.00	0.00
8-May-14	2.60	3.25	0.00	2.74	0.05	0.00	8.64	0.00	0.00	3.21	0.00	0.00	2.58	5.79	4.76	1.22	5.98	0.00	0.00	0.00
9-May-14	2.17	2.90	0.00	2.90	0.00	0.00	7.97	0.00	0.00	1.94	0.00	0.71	3.46	6.10	0.89	0.63	1.52	0.00	0.00	0.00
10-May-14	1.34	1.95	0.00	1.43	0.83	0.00	5.55	0.00	0.00	2.96	0.00	0.00	1.43	4.39	0.47	0.47	0.94	0.00	0.00	0.00
11-May-14	1.87	3.02	0.00	2.75	0.64	0.03	8.30	0.00	0.00	0.91	0.00	0.11	1.85	2.87	2.50	0.90	3.40	0.00	0.00	0.00
12-May-14	0.46	2.18	0.00	1.71	0.17	0.00	4.51	0.00	0.00	2.58	0.00	0.30	2.55	5.43	1.73	0.77	2.50	0.00	0.00	0.00
13-May-14	2.14	3.14	0.00	3.49	0.54	0.03	9.32	0.00	0.00	0.26	0.00	0.02	1.80	2.08	2.50	0.70	3.20	0.00	0.00	0.00
14-May-14	2.93	2.99	0.00	2.82	3.30	0.44	12.47	0.00	0.00	0.77	0.00	0.00	0.00	0.77	1.36	0.61	1.97	0.00	0.00	0.00
15-May-14	3.34	3.67	0.00	3.44	0.32	0.00	10.76	0.00	0.00	1.92	0.00	0.00	1.63	3.55	3.93	0.79	4.72	0.00	0.00	0.00
16-May-14	3.40	3.33	0.00	2.66	0.49	0.00	9.88	0.00	0.00	2.48	0.00	0.00	1.57	4.05	3.42	0.79	4.21	0.00	0.00	0.00
17-May-14	3.24	4.56	0.00	3.45	0.00	0.00	11.25	0.00	0.00	1.90	0.00	0.14	1.89	3.94	6.82	1.87	8.69	0.00	0.00	0.00
18-May-14	3.83	3.91	0.00	3.33	0.00	0.00	11.07	0.00	0.00	2.03	0.00	0.81	2.18	5.02	9.04	2.12	11.16	0.00	0.00	0.00
19-May-14	5.02	5.50	0.00	5.46	0.12	0.00	16.09	0.00	0.00	0.43	0.00	0.29	1.64	2.36	9.89	2.24	12.13	0.00	0.00	0.00
20-May-14	4.41	6.28	0.00	4.52	0.15	0.00	15.36	0.00	0.00	1.88	0.00	0.26	1.81	3.95	10.58	2.48	13.06	0.00	0.00	0.00
21-May-14	1.42	4.31	0.00	3.19	0.25	0.00	9.17	0.00	0.00	3.05	0.00	0.20	1.80	5.05	8.81	2.79	11.61	0.00	0.00	0.00
22-May-14	3.30	4.07	0.00	3.36	0.41	0.00	11.13	0.00	0.00	3.03	0.00	0.05	1.57	4.65	10.12	2.61	12.72	0.00	0.00	0.00
23-May-14	4.51	5.14	0.00	4.47	0.61	0.00	14.72	0.00	0.00	1.95	0.00	0.00	1.40	3.35	9.18	2.26	11.44	0.00	0.00	0.00
24-May-14	3.10	3.68	0.00	2.82	0.49	0.00	10.09	0.00	0.00	3.55	0.00	0.00	1.20	4.75	10.03	2.42	12.45	0.00	0.00	0.00
25-May-14	2.42	2.93	0.00	2.89	0.15	0.00	8.39	0.00	0.00	4.78	0.00	0.00	1.46	6.24	9.64	2.16	11.80	0.00	0.00	0.00
26-May-14	1.89	2.38	0.00	2.64	0.00	0.00	6.91	0.00	0.00	6.49	0.00	0.50	2.97	9.96	9.85	2.29	12.14	0.00	0.00	0.00
27-May-14	0.92	1.82	0.00	2.08	0.07	0.00	4.89	0.00	0.00	6.81	0.00	0.74	2.37	9.93	9.90	3.22	13.12	0.00	0.00	0.00
28-May-14	1.11	1.71	0.00	0.89	0.01	0.00	3.72	0.00	0.00	7.28	0.00	0.67	2.13	10.08	8.86	4.00	12.86	0.00	0.00	0.00
29-May-14	0.69	2.61	0.00	1.43	0.00	0.00	4.73	0.00	0.00	7.02	0.00	0.96	2.31	10.29	8.27	3.36	11.63	0.00	0.00	0.00
30-May-14	1.40	3.18	0.00	2.43	0.01	0.00	7.01	0.00	0.00	6.15	0.00	0.90	2.26	9.31	6.48	3.34	9.82	0.00	0.00	0.00
31-May-14	1.40	2.03	0.00	2.11	0.00	0.00	5.54	0.00	0.00	6.89	0.00	0.76	2.22	9.86	9.13	3.77	12.91	0.00	0.00	0.00
Total May'14	72.09	97.73	0.00	78.59	10.23	0.49	259.13	0.73	0.00	115.02	0.00	9.39	63.40	188.55	201.50	59.03	260.53	0.00	0.00	0.00



Date	12.4 Import and Export of SR with ER & WR during May 2014											
	Export of ER to SR (ER - SR)			Import of ER from SR (SR - ER)			Export of WR to SR (WR-SR)			Import of WR from SR (SR - WR)		
	ER - SR HVDC Gazuwaka	ER - SR HVDC Talchar - Kolar	Total ER - SR	SR - ER HVDC Gazuwaka	SR - ER HVDC Talchar - Kolar	Total SR - ER	WR - SR HVDC Bhadrawati	WR - SR 765 kV Sholapur - Raichur	Total WR - SR	SR - WR HVDC Bhadrawati	SR - WR 765 kV Raichur - Sholapur	Total SR - WR
1-May-14	17.71	39.99	57.70	0.00	0.00	0.00	23.49	1.85	25.34	0.00	1.42	1.42
2-May-14	18.76	41.88	60.64	0.00	0.00	0.00	23.53	3.85	27.38	0.00	0.49	0.49
3-May-14	18.74	38.86	57.60	0.00	0.00	0.00	17.09	2.36	19.45	0.00	1.22	1.22
4-May-14	18.06	35.61	53.67	0.00	0.00	0.00	23.46	2.50	25.95	0.00	1.28	1.28
5-May-14	17.90	39.08	56.99	0.00	0.00	0.00	22.91	1.28	24.19	0.00	1.74	1.74
6-May-14	18.66	34.93	53.59	0.00	0.00	0.00	19.64	1.41	21.05	0.00	2.75	2.75
7-May-14	18.66	36.69	55.34	0.00	0.00	0.00	20.21	0.75	20.96	0.00	3.19	3.19
8-May-14	18.36	40.08	58.44	0.00	0.00	0.00	16.50	1.76	18.26	0.00	2.25	2.25
9-May-14	17.21	37.85	55.06	0.00	0.00	0.00	19.05	2.28	21.33	0.00	2.36	2.36
10-May-14	18.72	39.25	57.97	0.00	0.00	0.00	21.80	1.98	23.79	0.00	1.70	1.70
11-May-14	18.70	39.10	57.80	0.00	0.00	0.00	19.91	2.97	22.89	0.00	1.18	1.18
12-May-14	18.69	38.01	56.70	0.00	0.00	0.00	23.30	1.98	25.27	0.00	1.80	1.80
13-May-14	18.73	42.85	61.59	0.00	0.00	0.00	23.68	1.99	25.67	0.00	2.47	2.47
14-May-14	18.73	38.85	57.58	0.00	0.00	0.00	22.53	0.84	23.37	0.00	2.97	2.97
15-May-14	18.72	42.94	61.67	0.00	0.00	0.00	22.29	1.39	23.68	0.00	2.43	2.43
16-May-14	18.73	43.87	62.60	0.00	0.00	0.00	22.64	1.01	23.64	0.00	1.72	1.72
17-May-14	18.16	43.93	62.09	0.00	0.00	0.00	21.18	1.74	22.93	0.00	2.04	2.04
18-May-14	18.15	40.73	58.88	0.00	0.00	0.00	22.87	2.27	25.15	0.00	1.60	1.60
19-May-14	18.56	39.26	57.82	0.00	0.00	0.00	23.49	2.82	26.31	0.00	1.07	1.07
20-May-14	17.07	42.44	59.50	0.00	0.00	0.00	23.65	1.73	25.39	0.00	1.52	1.52
21-May-14	13.71	40.31	54.02	0.00	0.00	0.00	23.44	3.74	27.19	0.00	0.51	0.51
22-May-14	16.95	44.68	61.63	0.00	0.00	0.00	23.28	3.44	26.71	0.00	0.70	0.70
23-May-14	16.89	45.58	62.47	0.00	0.00	0.00	23.64	2.19	25.83	0.00	1.03	1.03
24-May-14	18.52	40.91	59.43	0.00	0.00	0.00	23.64	2.41	26.05	0.00	0.93	0.93
25-May-14	17.69	46.26	63.95	0.00	0.00	0.00	23.55	2.55	26.10	0.00	1.27	1.27
26-May-14	18.73	47.42	66.15	0.00	0.00	0.00	23.56	1.70	25.25	0.00	1.39	1.39
27-May-14	17.90	44.76	62.66	0.00	0.00	0.00	23.55	3.18	26.73	0.00	0.83	0.83
28-May-14	11.17	49.17	60.33	0.00	0.00	0.00	23.56	3.90	27.45	0.00	0.58	0.58
29-May-14	8.58	47.15	55.73	0.00	0.00	0.00	23.71	2.56	26.27	0.00	0.86	0.86
30-May-14	8.57	46.47	55.03	0.00	0.00	0.00	23.65	2.11	25.76	0.00	0.82	0.82
31-May-14	10.79	50.25	61.04	0.00	0.00	0.00	23.72	2.30	26.02	0.00	1.01	1.01
Total May'14	526.50	1299.16	1825.66	0.00	0.00	0.00	692.54	68.83	761.36	0.00	47.17	47.17

**13. भूटान ,नेपाल एवं बांग्लादेश के साथ अंतरराष्ट्रीय विद्युत विनिमय  
INTERNATIONAL EXCHANGE WITH BHUTAN, NEPAL AND BANGLADESH**

**अप्रैल 2014 APRIL 2014 -मई 2014 MAY 2014**

अंतरराष्ट्रीय विद्युत विनिमय [भारत से दूसरे देश को आयात (+) / निर्यात (-)]  
Transnational Exchange (Import=(+ve) /Export =(-ve))

माह MONTH	भूटान BHUTAN	नेपाल NEPAL	बांग्लादेश BANGLADESH
	Energy Exchange (In MU)	Energy Exchange (In MU)	Energy Exchange (In MU)
अप्रैल 2014 APR'14	78.02	-79.85	-276.56
मई 2014 MAY'14	271.28	-76.50	-273.69
कुल Total	349.30	-156.35	-550.25

**14. एसटीओए (द्विपक्षीय एवं सामूहिक) एवं डी एस एम बिलिंग का ब्योरा – माह मई 2014  
STOA (BILATERAL AND COLLECTIVE) & DSM BILLING DETAILS- May' 2014**

**द्विपक्षीय एसटीओए BILATERAL SHORT TERM OPEN ACCESS**

क्षे.भा.प्रे.के. का नाम Name of RLDC	मई 2014 May'14		Apr'14- May'14	
	लेन – देनों की संख्या No. of Transactions	अनुमोदित ऊर्जा (मि.यु.) Energy Approved(MU)	लेन – देनों की संख्या No. of Transactions	अनुमोदित ऊर्जा (मि.यु.) Energy Approved (MU)
ऊ.क्षे. NR	351	1443	588	2343
प.क्षे. WR	139	576	310	1143
द.क्षे. SR	249	960	454	2118
पू.क्षे. ER	146	782	288	1841
पूर्वात्तर क्षे. NER	45	111	73	192
कुल TOTAL	930	3872	1713	7637

**एसटीओए SHORT TERM OPEN ACCESS**

माह MONTH	सामूहिक एसटीओए STOA		द्विपक्षीय एसटीओए Bilateral STOA	
	क्रेताओं / विक्रेताओं की सं. NO. of Buyers/Sellers	अनुमोदित ऊर्जा (मि.यु.) Approved Energy (MU)	क्रेताओं / विक्रेताओं की सं. NO. of Buyers/Sellers	अनुमोदित ऊर्जा (मि.यु.) Approved Energy (MU)
अप्रैल 2014 APR'14	2015	2143	783	3765
मई 2014 MAY'14	1962	2383	930	3872
कुल TOTAL	3977	4526	1713	7637

**मासिक यु.आई. बिलिंग का ब्योरा 2014-15  
MONTHLY UI BILLING DETAILS 2014-15**

अनंतिम आकड़े  
provisional data subject to change

करोड़ रु. मे (RS. IN CRORES)

क्षेत्र REGION	उत्तरी क्षेत्र NORTH	पश्चिमी क्षेत्र WEST	पूर्वी क्षेत्र EAST	दक्षिणी क्षेत्र SOUTH	पूर्वात्तर क्षेत्र NORTH EAST	अखिल भारतीय स्तर ALL INDIA
31 Mar- 27 Apr 2014	228	184	145	38	30	624
Up to 01 Jun 2014	490	358	245	80	61	1234

15. पावर मार्केट की सूचना ( स्रोत : आई.ई.एक्स. एवं पी.एक्स.आई.एल.)  
**POWER MARKET INFORMATION ( Source IEX & PXIL)**  
 पावर एक्सचेंज के माध्यम से विनिमय – माह मई 2014  
**EXCHANGES THROUGH POWER EXCHANGES -MAY'2014**

क्र. स. S. No.	क्षेत्रीय ईकाई Regional Entity	क्षेत्र Region	पावर एक्सचेंज के माध्यम से (मि.यु.मे) Through Power Exchange in MU	
			विक्रय Sale	क्रय Purchase
1	पंजाब Punjab	उत्तरी क्षेत्र NR	0.00	177.08
2	हरियाणा Haryana		65.01	111.24
3	राजस्थान Rajasthan		37.05	269.13
4	दिल्ली Delhi		218.97	14.66
5	उत्तर प्रदेश Uttar Pradesh		0.00	238.47
6	उत्तराखण्ड Uttarakhand		4.08	91.76
7	हिमाचल प्रदेश Himachal Pradesh		346.58	2.67
8	जम्मू और कश्मीर J & K		31.95	7.16
9	केंद्र शासित चंडीगढ़ UT Chandigarh		0.00	0.87
10	ए डी हाइड्रो AD Hydro		59.62	0.00
11	करचम वांगतू KW		203.75	0.00
12	श्री सीमेंट Shree Cement		24.18	0.00
13	नाथपा झाकरी Nathpa Jhakri		16.61	0.00
14	बैरासूल Baira Siul HEP(BS0)		0.00	0.00
15	चमेरा -1 Chamera-I HEP(CM1)		0.00	0.00
16	चमेरा -2 Chamera-II HEP(CM2)		0.00	0.00
17	धौलीगंगा Dhauliganga HEP(DG0)		0.00	0.00
18	धौलीगंगा Dulahasti HEP(DU0)		0.00	0.00
19	सलाल Salal HEP(SL0)		0.00	0.00
20	सेवा -2 Sewa-II NHPC(SW2)		0.00	0.00
21	टनकपुर Tanakpur HEP(TP0)		0.00	0.00
22	उरी Uri HEP(UR0)		0.00	0.00
23	लांको बुधिल LANCO Budhil		35.32	0.00
24	चमेरा-3 chamera 3		0.00	0.00
25	अदानी एचवीडीसी ADANI HVDC(NORGU0)		0.00	0.00
26	मलाना MALANA	2.99	0.00	
27	उरी-II Uri-II HEP(UR2)	0.00	0.00	
28	मध्य प्रदेश MP	पश्चिमी क्षेत्र WR	47.03	43.14
29	महाराष्ट्र Maharashtra		14.22	239.04
30	गुजरात Gujarat		220.11	184.40
31	छत्तीसगढ़ Chattisgarh		104.05	1.85
32	गोवा Goa		0.00	0.00
33	दमन और दीव Daman and Diu		0.00	31.18
34	दादरा और नगर हवेली Dadra & Nagar Haveli		0.00	0.00
35	जिंदल JD		119.95	0.00
36	लांको अमरकंटक LANCO AMK		0.00	0.00
37	आर्यन कोल ACB India Limited		38.13	0.00
38	जिंदल स्टील एंड पावर Jindal Steel and Power Ltd		39.73	0.00
39	बालको -2 Balco-II		10.01	0.00
40	स्टरलाइट Sterlite(w3rse0)		211.14	0.00
41	एमको EMCO		8.30	0.00
42	वन्दना विद्युत VANDANA VIDYUT		12.03	0.00
43	एस्सार पावर ESSAR POWER		0.00	0.00
44	एस्सार स्टील ESSAR STEEL		0.00	337.77
45	के एस के महानदी KSK Mahanadi		0.00	0.00
	जिंदल स्टेज -II Jindal Stg-II		29.59	0.00
46	कोरबा (प.) Korba(W) Comp. Ltd.		0.00	0.00

**15. पावर मार्केट की सूचना ( स्रोत : आई.ई.एक्स. एवं पी.एक्स.आई.एल.)**  
**POWER MARKET INFORMATION ( Source IEX & PXIL)**  
**पावर एक्सचेंज के माध्यम से विनिमय - माह मई 2014**  
**EXCHANGES THROUGH POWER EXCHANGES -MAY'2014**

क्र. स. S. No.	क्षेत्रीय ईकाई Regional Entity	क्षेत्र Region	पावर एक्सचेंज के माध्यम से (मि.यु. मे) Through Power Exchange in MU	
			विक्रय Sale	क्रय Purchase
47	आंध्र प्रदेश Andhra Pradesh	दक्षिणी क्षेत्र SR	37.62	292.88
48	कर्नाटक Karnataka		133.15	34.75
49	केरल Kerala		0.85	0.00
50	तमिलनाडु Tamilnadu		0.00	0.84
51	पॉण्डिचेरी Pondicherry		0.00	0.00
52	गोवा Goa		0.00	0.00
53	लांको कोंडापल्ली LANCO_KONDPLY		0.00	0.00
54	सिमापुरी SIMHAPURI		17.75	0.00
55	मीनाक्षी MINAXI		0.81	0.00
56	पश्चिम बंगाल West Bengal		पूर्वी क्षेत्र ER	49.72
57	उड़ीशा Odisha	79.45		3.38
58	बिहार Bihar	0.00		138.68
59	झारखंड Jharkhand	0.00		0.00
60	सिक्किम Sikkim	24.27		0.00
61	दामोदर घाटी परियोजना DVC	28.44		0.00
62	स्टरलाइट STERLITE	0.00		0.00
63	मैथन पावर लिमिटेड Maithon Power Ltd	28.68		0.00
64	आधुनिक पावर लिमिटेड Adhunik Power Ltd	1.24		0.00
65	चुजाचैन Chuzachen HEP	12.49		0.00
66	रंगित Rangit HEP	0.00		0.00
67	जीएमआर कमलंगा GMR Kamalanga	0.00		0.00
68	तीस्ता Teesta HEP	4.26		0.00
69	अरुणाचल प्रदेश Arunachal Pradesh	0.00		3.96
70	असम Assam	13.17		51.72
71	मणिपुर Manipur	0.00		0.15
72	मेघालय Meghalaya	10.98		9.45
73	मिज़ोरम Mizoram	0.33		0.00
74	नागालैंड Nagaland	0.00	0.00	
75	त्रिपुरा Tripura	23	2.32	
76	अगरतला जीटीपीपी Agartala GTPP_AG0	1	0.00	
77	कोपिली KOPILI_KP1	0	0.00	
78	असम जीबीपीपी Assam GBPP_KT0	4	0.00	
79	लोकटक LOKTAK	1	0.00	
80	रंगानदी Ranganadi	1	0.00	
81	दोयांग Doyang	0	0.00	
82	पलाताना Palatana	9	0.00	
कुल Total			2383	2383

## **16. RENEWABLE ENERGY CERTIFICATE MECHANISM**

**MONTH:-MAY 2014**

### **RE Source & Unit wise break up (May,14)**

Sr.No	Source Wise	Accreditation		Registration	
		Capacity (MW)	Unit	Capacity (MW)	Unit
1	Wind	0	0	27.66	9
2	Urban or Municipal Waste	0	0	0	0
3	Solar Thermal	0	0	0	0
4	Solar PV	28.1	15	49.26	21
5	Small Hydro	31.5	2	1.48	1
6	Others	0	0	0	0
7	Geothermal	0	0	0	0
8	Biomass	0	0	22.6	3
9	Bio-fuel cogeneration	0	0	6.98	1
	<b>Total</b>	<b>59.6</b>	<b>17</b>	<b>107.98</b>	<b>35</b>

### **RECs Issued (May,14)**

Sr.No.	Non Solar	Solar	Total
1	482240	32776	515016

### **Redemption of REC (May,14)**

Sr.No.	Non Solar	Solar	Total
1	29255	2120	31375

## **16. RENEWABLE ENERGY CERTIFICATE MECHANISM**

**MONTH:-MAY 2014**

### **RE Source & Unit wise break up (Apr,14-May,14)**

Sr.No	Source Wise	Accreditation		Registration	
		Capacity (MW)	Unit	Capacity (MW)	Unit
1	Wind	23.7	4	34.56	11
2	Urban or Municipal Waste	0	0	0	0
3	Solar Thermal	0	0	0	0
4	Solar PV	47.36	29	91.4	42
5	Small Hydro	41.98	4	53.98	6
6	Others	0	0	0	0
7	Geothermal	0	0	0	0
8	Biomass	0	0	22.6	3
9	Bio-fuel cogeneration	16.63	3	6.98	1
	<b>Total</b>	<b>129.67</b>	<b>40</b>	<b>209.52</b>	<b>63</b>

### **RECs Issued (Apr,14-May,14)**

Sr.No.	Non Solar	Solar	Total
1	1552584	76509	1629093

### **Redemption of REC (Apr,14-May,14)**

Sr.No.	Non Solar	Solar	Total
1	108609	3109	111718

## **16. RENEWABLE ENERGY CERTIFICATE MECHANISM**

**MONTH:-MAY 2014**

### **RE Source & Unit wise break up Since Inception to May,14**

Sr.No	Source Wise	Accreditation		Registration	
		Capacity (MW)	Unit	Capacity (MW)	Unit
1	Wind	2365.43	615	2172.74	576
2	Urban or Municipal Waste	8	1	8	1
3	Solar Thermal	3	1	0	0
4	Solar PV	500.38	231	460.28	206
5	Small Hydro	342.49	37	256.99	29
6	Others	1.67	1	1.67	1
7	Geothermal	0	0	0	0
8	Biomass	693.36	74	664.06	70
9	Bio-fuel cogeneration	853.3	89	745.05	82
	<b>Total</b>	<b>4767.62</b>	<b>1049</b>	<b>4308.78</b>	<b>965</b>

### **RECs Issued since Inception to May,14**

Sr.No.	Non Solar	Solar	Total
1	13341736	297540	13639276

### **Redemption of REC since Inception to May,14**

Sr.No.	Non Solar	Solar	Total
1	6382122	83802	6465924

### **REC Closing balance as on 31.05.2014**

Sr.No.	Non Solar	Solar	Total
1	6959614	213738	7173352



**17.माह मई 2014 की मुख्य घटनाये / डिस्टर्बेन्सेज Important Events / Disturbances May 2014**

A	B		C	D	E	F	G	H		I
S.NO.	Outage		Region	Name of tripping elements	Owner / Agency	Event	Generation/Load Loss	Revival		Category as per CEA Grid Standards
	Date	Time						Date	Time	
1	01.05.14	1755 hrs	ER	1) 132 kV Purnea-Forbisgunj 2)132 kV Purnea(PG)-Purnea(BSEB) T/C 3)132 kV Purnea(BSEB)-Kishanganj	BSEB/PG	Due to R-Phase to Ground fault in 132 kV Purnea-Forbisgunj, 132 kV bus at Purnea(BSEB) became dead.	Load Loss=50 MW	01.05.14	1908 hrs	GD-I
2	03.05.14	1407 hrs	ER	1)220kV Tenughat-Patratu 2)220 kV Patratu-Hatia D/C 3)132 kV patratu-Hatia D/C 4)UNIT # I,II,VI,X(210MW each) at Tenughat	TVNL/JSEB	Due to rain and thunderstorm elements given in column D tripped.	Load Loss= 270MW Generation Loss= 390 MW	03.05.14	1457 hrs	GD-I
3	03.05.14	1738 hrs	NR	1)220 kV Samaypur-Ballabgarh T/C 2)220 kV Faridabad-Samaypur-I 3) BTPS Unit-II & III(100 MW each)	NTPC/HVNL	While Charging 220 kV Samaypur-Ballabgarh-I, wave trap damaged at Samaypur and Y-pahse PT burst at Ballabgarh caused tripping of elements given in column D.	Gen Loss=180 MW	03.05.14	1845 hrs	GD-I
4	04.05.14	1201 hrs	NR	1) 400kV Chabra-Kawai(Adani) 2) 400 kV Bassi-kawai(Adani) 3)Kawai(ADANI) TPS Unit #1 & II(660 MW each)	Adani/PG	Due to DT received at Bassi & Chhabra end, elements given in column D tripped.	Generation Loss=1000 MW (approx figure)	04.05.14	1201 hrs	GD-I
5	05.05.14	0948 hrs	NR	1).220kV Sarna-Kishenpur D/C 2). 220kV Sarna-Udhampur 3). 220kV Dasuya-Sarna D/C 4). 220kV Hiranagar-Sarna	PG	Due to Failure of Y-Phase CT of Bus Coupler at Sarna end,given lines in Column D tripped	Load Loss=200MW	05.05.14	1234 hrs	GD-I
6	06.05.14	0313 hrs	WR	1). 400kV Koradi-Koradi-II 2). 400kV Koradi-Bhilai S/C 3). 400kV Koradi-Khaparkheda-I 4). 400/220kV ICT-I at Koradi	MSETCL	Due to Bus Fault at Koradi S/S, elements given in column D tripped.	Load Loss=Nil Gen Loss=Nil	06.05.14	0704 hrs	GI-II
7	06.05.14	1006 hrs	WR	1). 220kV Urse-Chinchwad 2). 220kV Chinchwad-Chakan 3). 220kV Flagship-Chinchwad 4). 220kV Pirangut-Hinjewadi-II 5). 220kV Parvati-Chinchwad 6). 220kV Jejuri-Parvati 7). 220kV Jejuri-Lonand 8). 220kV Jejuri-Baramati 9). 220kV Kandalgaon-Lonand 10). 220kV Bhosari-II-Telco-Chinchwad	MSETCL	220 kV Chinchwad sub-station in the Pune Ring main has incoming sources from 400 kV Chakkan and 400 kV Lonikhand S/s. The tripping of 220 kV Urse-Chinchwad S/s has resulted in Overloading of other circuits which further tripped on overload. 7 circuits tripped on backup overcurrent protection and 3 circuits on Load trimming scheme operation.	Load Loss=1000MW(Approx)	07.05.14	1046 hrs	GD-I
8	09.05.14	1630 hrs	NER	1). 132kV Imphal-Imphal D/C	NETCL	Due to E/F given line tripped	Load Loss=55MW	09.05.14	1701 hrs	GD-I
9	10.05.14	0254 hrs	NER	1). 400kV Silchar- Byrnihat S/C 2).132kV Khliehira -Badarpur 3).132kV Haflong-Jiribam 4).132kV Dimapur-Imphal 5). 132kV Loktak-Imphal 7). Palatana Generation	NETCL/OTPC	Due to B-Phase to Earth Fault in 400kV Silchar-Byrnihat line, elements given in Coulumn D tripped.	Load Loss=217MW Gen Loss=466MW	10.05.14	0707 hrs	GD-II
10	11.05.14	2019 hrs	ER	1). 400kV Farakka-Behrampore 2). 400kV Farakka-Kahalgaoon II & IV 3).400kV Farakka-Malda-I 4). 400kV Farakka-Sagardighi 5). Unit#1,2(2X200) 4,6(2X500) at Farakka	NTPC/WBSETCL	Due to Bus-I fault at Farakka end , elements given in column D tripped.	Gen Loss=980MW	12.05.14	0106 hrs	GD-I

**17.माह मई 2014 की मुख्य घटनाये / डिस्टर्बेन्सेज Important Events / Disturbances May 2014**

A	B		C	D	E	F	G	H		I
S.NO.	Outage		Region	Name of tripping elements	Owner / Agency	Event	Generation/Load Loss	Revival		Category as per CEA Grid Standards
	Date	Time						Date	Time	
11	12.05.14	1721 hrs	NR	1). 220kV Auraiya-Sikandra D/C 2). 220kV Auraiya-Malanpur 3). 220kV Auraiya-Mahgaon 4). 400/220kV ICT-I & II at auraiya 5). UNIT-GT-3 & ST-2 at Auraiya	PG	Three Phase Fault occurred at 220kV Auraiya-Sikandra-I and at the same time bus bar protection operated at Auraiya, elements given in column D tripped.	Gen Loss=140MW	12.05.14	2012hrs	GD-I
12	12.05.14	1457 hrs	WR	1). 400kV Padge-Nagthone-II 2). 400kV Padge-Bableswar-I 3). 400kV Padge-Kalwa-I 4). 400kV Padge-Khargar 5). 400kV Padge-Tarapur-I 6) Padge-Chandrapur-Pole I,II 7). 400/220kV ICT-I & II at Padge	MSETCL	Due to conductor snapping and falling on Bus-I, Bus fault occurred on Bus-I at Padge S/S and elements given in column D tripped	Load Loss=Nil	12.05.14	1457 hrs	GI-II
13	13/05/14	2147 hrs	ER	1).220kV Budhipadar-IBTPS Q/C 2). 220kV Budhipadar-Vedanta D/C 3). 220kV Budhipadar-Katapali D/C 4). 220kV Budhipadar-Korba D/C 5). 220kV Budhipadar-Raigarh 6). Unit #1&2 at IBTPS 7).Unit#2 at Sterlite	CSEB/Vedanta	Due to Bus fault at 220kV Budhipadar S/S, elements given in column D tripped	Load Loss=500MW Gen Loss=700MW	13.05.14	2347 hrs	GD-I
14	14.05.14	1015 hrs	NER	1).220kV Samaguri-Sarusajai D/C	AEGCL	Given line in Column D tripped on distance protection.(220kV BTPS-Agia was in shutdown)	Load Loss=200MW	14.05.14	1116 hrs	GD-II
15	15.05.14	1540 hrs	WR	1). 400 KV BINA(MP) - BINA(PG) – Q/C 2). 400 KV BINA – BHOPAL - D/C 3). 400 KV BINA - BINA(JP) 4). 400/220kV ICT-I,II & III at Bina 5). 220 KV BINA ( MP ) - BINA ( JP )	MPPTCL/Jeypee	Due to Bus Bar Protection Operation at Bina S/S, all Elements given in column D tripped.	Load Loss -Nil	15.05.14	1758 hrs	GI-II
16	17.05.14	2132 hrs	NR	1). 400kV Dadri-Muradnagar S/C 2).315MVA,400/220kV ICT-I,II&III at Muradnagar	UPPTCL	Due to snapping of Bus Isolator Jumper at Muradnagar S/S,elements given in Column D tripped.	Load Loss =650	17.05.14	0215 hrs	GD-I
17	19.05.14	0041 hrs	SR	1).220kV Chandrayangutta-Dindi-D/C 2).220kV Chandrayangutta-Ghanapur D/C 3).220kV Chandrayangutta-Hial S/C 4).220kV Chandrayangutta-Mimidpalli S/C	AP Transco	Due to CT failure of 220kV Chandrayangutta -Hial Ckt, all elements given in Coulum D tripped	Load Loss=450MW	19.05.14	0130 hrs	GD-I
18	20.05.14	1957 hrs	WR	1). 400kV Tirora-Warora D/C 2). Unit#2,3&4 at Tirora	APL	Due to B-Phase LA Blast of 400kV Tirora-Warora-Elements given in column D tripped.	Load Loss=Nil Gen Loss=1845MW	20.05.14	2007 hrs	GD-I
19	22.05.14	1502 hrs	ER/SR	1). 400kV Jeypore-Gazuwaka D/C 2). Gazuwaka B/B Poles	PG	400kV Jeypore-Gazuwaka tripped on Distance protection led to the blocking of HVDC poles.	Load Loss=Nil	22.05.14	1728 hrs	GI-II
20	25.05.14	1911 hrs	NR	1).400kV Ballabgarh-Mainpuri-D/C 2). 400kV Ballabgarh-Bamnoli D/C	PG/DTL	Y-Ph LA of Ballabgarh-Mainpuri-2 at Balabgarh end blasted and Bus-Bar-1 operated at Ballabgarh end	Load Loss=Nil	25.05.14	2330 hrs	GI-II
21	27.05.14	1426 hrs	WR/SR	1) 765kV Raichur-Sholapur S/C	PG	Due to B-Phase to Earth fault in line, line tripped and leds to separation of NEW and SR Grid.	Load Loss=Nil	27.05.14	1525 hrs	GI-II

**17.माह मई 2014 की मुख्य घटनाये / डिस्टर्बेन्सेज Important Events / Disturbances May 2014**

A	B		C	D	E	F	G	H		I
S.NO.	Outage		Region	Name of tripping elements	Owner / Agency	Event	Generation/Load Loss	Revival		Category as per CEA Grid Standards
	Date	Time						Date	Time	
22	29.05.14	1701 hrs	WR/SR	1) 765kV Raichur-Sholapur S/C	PG	Due to B-Phase to Earth fault in line, line tripped and led to separation of NEW and SR Grid.	Load Loss=Nil	19.05.14	1729 hrs	GI-II
23	30.05.14	1600-1900 hrs	NR	1) 4 no. of 765 kV Lines 2)39 no. of 400 kV Lines 3) 31 no. of 220 kV lines	NR	Indian electricity grid experienced a near miss incident when a heavy thunderstorm in the North West and National Capital Region (NCR) area led to a large number of 765 kV, 400 kV and 220 kV line tripping and a heavy load crash in the Northern region. A grid disturbance was narrowly averted. The system frequency also touched a high of 50.65 Hz .	Load Crash= 8000 MW(approx basis ) (Over a period of 2-3 hours)	30.05.14	by midnight most of the lines were restored except those which were out due to physical damage	GD-I
24	30.05.14	1651 hrs	WR/NR	1) Mundra-Mohindergarh HVDC Bipole 2)APL Mundra Stage-III, Two Units(660 MW each)	APL	The HVDC bipole tripped on SSR protection operation and after the SSR damping controller acted for over two and a half minutes to damp out the oscillations.Two 660 MW units at APL Mundra Stage-III tripped on System Protection Scheme (SPS).	Generation Loss= 1100 MW	30.05.14	1836 hrs	GD-I
25	31.05.14	0502 hrs	ER	1).200kV Tenughat-Patratu 2).220kV Patratu-Hatia D/C 3).Unit#1&2 at TTPS	JSEB	Due to inclement Weather Condition,elements given in column D tripped.	Load Loss=200MW Gen Loss=337MW	31.05.14	0515 hrs	GD-I
26	31.05.14	2355 hrs	ER	1). 220kV Sagardighi-Gokarno-I 2).315MVA 400/220kV ICT at Sagardighi 3).Units(2X300MW) of Sagardighi	WBSETCL	Due to Failure of B-Phase CT at 220kV side at Sagardighi, elements given in coulum D tripped	Gen Loss=390 MW	01.06.14	0015 hrs	GD-I

**18. NEW ELEMENTS COMMISSIONED in MAY-2014**

**COMMISSIONING OF NEW GENERATING UNITS**

REGION	SL. NO.	CONSTITUENT	UNIT NAME	UNIT NO	CAPACITY (MW)	DATE	TIME
WR	1	Sasan UMPP - Reliance Power	Sasan	I	660	27.05.14	0:00

**COMMISSIONING OF NEW TRANSMISSION LINES**

REGION	SL. NO.	CONSTITUENT	LINE NAME	CKT NO	KV	DATE	TIME
NR	1	PSTCL	RAJPURA - MAKHU	S/C	400	20.05.14	19:15
	2		MOGA(PG) - NAKODAR(PSTCL)	S/C	400	23.05.14	17:31
	3	UPPTCL	ANPARA C - ANPARA D	S/C	765	31.05.14	18:06
WR	4	PGCIL	BINA - GWALIOR	III	765	02.05.14	19:38
	5		INDORE - ASOJ	III	400	03.05.14	19:59
	6		DHARAMJAYGARH - DURG	II	765	21.05.14	23:23
	7	Maharashtra	DEEPNAGAR - TAPTITHANDA	I	400	21.05.14	23:09
	8		AURANGABAD - TAPTITHANDA	I	400	21.05.14	23:09

**COMMISSIONING OF NEW ICTS**

REGION	SL. NO.	CONSTITUENT	STATION NAME	KV RATIO	CAPACITY (MVA)	DATE	TIME
NR	1	PSTCL	NAKODAR ICT#1	400/220	315	23.05.14	18:31
	2		NAKODAR ICT#2	400/220	315	23.05.14	18:59
ER	3	PGCIL	Rangpo	400/220	315	21.05.14	14:57
	4		LAKHISARAI ICT#2	400/132	200	30.05.14	17:24

**COMMISSIONING OF BUS REACTORS**

REGION	SL.NO.	CONSTITUENT	STATION NAME	KV	CAPACITY (MVAR)	DATE	TIME
ER	1	PGCIL	NEW RANCHI	765	240	31.05.14	13:40

**COMMISSIONING OF LINE REACTORS**

REGION	SL. NO.	CONSTITUENT	STATION NAME	LINE NAME	KV	CAPACITY (MVAR)	DATE	TIME
WR	1	PGCIL	DURG	DHARAMJAYGARH - DURG - I	765	240	21.05.14	23:23
ER	2		LAKHISARAI	LAKHISARAI - KAHALGAON -	400	50	30.05.14	18:51

**19.विधुत विभव रूपरेखा माह – मई 2014**  
**VOLTAGE PROFILE - MAY 2014**

क्र.स. Sl. No.	क्षेत्र REGION	उपकेंद्र SUBSTATION	VOLTAGE < V(lower)* (V=122,380,728 kV)	V(lower) < VOLTAGE < V(upper)*	VOLTAGE > V(upper)* (V=145, 420, 800 kV)	उच्चतम (कि.वो.) Maximum (kV)	निम्नतम (कि.वो.) Minimum (kV)	औसत (कि.वो.) Average (kV)
1	पूर्वी क्षेत्र ER	फरक्का FARAKKA	0%	93%	7%	425	408	415
2		कहलगांव KAHALGAON	0%	47%	53%	431	411	420
3		तालचर TALCHER	0%	100%	0%	410	391	404
4		पुर्णिया PURNEA	0%	97%	3%	425	400	412
5		मुजफ्फरपुर MUZAFFARPUR	0%	95%	5%	426	388	410
6		जमशेदपुर JAMSHEDPUR	0%	31%	69%	428	411	421
7		रेंगाली RENGALI	0%	100%	0%	406	395	400
8		जेयपुर JEYPORE	0%	97%	3%	430	381	408
2	उत्तरी क्षेत्र NR	नल्लागढ़ NALLAGARH	0%	96%	4%	432	389	409
3		भिवाड़ी BHIWADI	0%	81%	19%	436	399	415
4		बल्लभगढ़ BALLABGARH	0%	89%	11%	436	399	414
5		इलाहाबाद ALLAHABAD	0%	98%	2%	426	397	411
6		हिसार HISSAR	0%	98%	1%	424	389	397
7		बवाना BAWANA	0%	96%	3%	429	394	406
8		कानपुर KANPUR	0%	99%	1%	424	396	409
9		बस्सी BASSI	0%	74%	26%	436	397	416
10		लखनऊ LUCKNOW 765 kV	0%	100%	0%	783	726	755
11		मोगा MOGA	0%	96%	0%	421	393	386
11		रतनगढ़ RATANGARH	0%	97%	3%	427	396	412
1	पश्चिमी क्षेत्र WR	आसोज ASOJ	0%	99%	0%	419	399	406
2		इटारसी ITARSI	0%	93%	7%	426	395	413
3		जेतपुर JETPUR	0%	100%	0%	418	398	408
4		कासोर KASOR	0%	100%	0%	420	403	412
5		कोल्हापुर KOLHAPUR	0%	100%	0%	418	418	418
6		बीना BINA	0%	100%	0%	423	395	410
7		ग्वालियर GWALIOR	0%	100%	0%	416	392	402
8		रायपुर RAIPUR	0%	50%	50%	428	412	420
9		जबलपुर JABALPUR	0%	100%	0%	423	396	408
10		धुले DHULE	0%	100%	0%	408	408	408
1	दक्षिणी क्षेत्र SR	श्रीपेरुपुडूर SRIPERUMPUDUR	0%	98%	2%	418	388	403
2		नेवेली NEVELI	0%	87%	13%	427	395	416
3		सेलम SALEM	0%	100%	0%	416	383	401
4		बंगलूरु BANGALORE	1%	99%	0%	418	373	395
5		होसूर HOSUR	0%	100%	0%	417	376	397
6		रामागुंडम RAMAGUNDAM	0%	100%	0%	425	407	415
7		विजयवाड़ा VIJAYAWADA	0%	100%	0%	434	414	424
8		तिरुवनंतपुरम TIRIVANDRUM	0%	100%	0%	427	393	411
9		हैदराबाद HYDERABAD	0%	100%	0%	434	406	419
1	पूर्वोत्तर क्षेत्र NER	मिसा MISA	0%	100%	0%	420	388	405
2		बलिपारा BALIPARA	0%	100%	0%	420	385	403
3		बोंगाईगांव BONGAIGAON	0%	100%	0%	412	381	398
4		हाफ्लोंग HAFLONG 132 kV	0%	100%	0%	140	123	132
5		आइज़ोल AIZWAL 132 kV	1%	99%	0%	139	123	129
6		कुमारघाट KUMARGHAT 132 kV	0%	100%	0%	137	126	130
7		इम्फाल IMPHAL 132 kV	74%	26%	0%	137	123	128
8		खलेरियट Khlieriat PG 132 kV	0%	100%	0%	139	125	133

\*Percentage is calculated w.r.t. Time of one month.



**POWER SYSTEM OPERATION CORPORATION LIMITED**

पाँवर सिस्टम ऑपरेशन कारपोरेशन लिमिटेड

NATIONAL LOAD DESPATCH CENTRE - राष्ट्रीय भार प्रेषण केन्द्र

POWERGRID, B-9, Qutab Institutional Area,  
Katwaria Sarai, New Delhi-110016.