

पावर सिस्टम ऑपरेशन कॉरपोरेशन लिमिटेड

(पावरग्रिड की पूर्ण स्वामित्व प्राप्त सहायक कंपनी)

POWER SYSTEM OPERATION CORPORATION LIMITED

(A wholly owned subsidiary of POWERGRID)



पंजीकृत एवं केन्द्रीय कार्यालय: बी-9, प्रथम तल, कुतुब इंस्टीट्यूशनल एरिया, कटवारिया सराय, नई दिल्ली-110 016
Registered & Corporate Office : B - 9, 1st Floor, Qutub Institutional Area, Katwaria Sarai, New Delhi - 110 016
Website : www.posoco.in, www.nldc.in, Tel: 011-26536832, 26524522, Fax: 011-26524525, 26536901

संदर्भ संख्या:-POSOCO/NLDC/GM/

दिनांक: 19.11.2013

सेवा में,

वितरण सूची के अनुसार

विषय:- निष्पादन रिपोर्ट - अक्टूबर 2013

महोदय,

आई०ई०जी०सी०-2010 के प्रावधान के अनुसार, - अक्टूबर 2013 माह की अखिल भारतीय प्रणाली की निष्पादन रिपोर्ट

धन्यवाद

भवदीय

एस. आर. नरसिंहन

(एस. आर. नरसिंहन)

उप महाप्रबंधक

(रा०भा०प्रे०के०)

संलग्नक: मासिक प्रणाली रिपोर्ट

वितरण सूची

Distribution List

1. सचिव, के.वि.नि.आ. तीसरा एवं चौथा तल, चंद्रलोक भवन, 36, जनपथ, नई दिल्ली - 110001
Secretary, CERC, 3rd & 4th Floor, Chanderlok Building, 36, Janpath, New Delhi-110001
2. मुख्य अभियंता, (जी एम), के. वि. प्रा., सेवा भवन, आर. के. पुरम, नई दिल्ली - 110066
Chief Engineer (GM), CEA, Sewa Bhavan, R.K.Puram, New Delhi-110066
3. सदस्य सचिव, ऊ. क्षे. वि. स., 18/ ए, शहीद जीत सिंह सनसनवाल मार्ग, नई दिल्ली - 110016
Member Secretary, NRPC, 18/A, SJSS Marg, Katwaria Sarai, New Delhi-110016
4. सदस्य सचिव, प. क्षे. वि. स., एफ-3, एम आई डी सी क्षेत्र, अंधेरी, मुंबई - 400093
Member Secretary, WRPC, F-3, MIDC Area, Andheri (East), Mumbai-400093
5. सदस्य सचिव, द. क्षे. वि. स., 29, रेस कोर्स क्रॉस रोड, बंगलुरु - 560009
Member Secretary, SRPC, 29, Race Course Cross Road, Bangalore-560009
6. सदस्य सचिव, पू. क्षे. वि. स., 14, गोल्फ क्लब रोड, कोलकाता - 700033
Member Secretary, ERPC, 14, Golf Club Road, Kolkata-700033
7. सदस्य सचिव, ऊ. पू. क्षे. वि. स., मेघालय राज्य आवसीय वित्त सहकारी समिति लिमिटेड भवन, नॉग्रिम हिल्स, शिलॉंग - 793003
Member Secretary, NERPC, Meghalaya State Housing Finance Cooperative Society Ltd.
Building, Nongrim Hills, Shillong -793003
8. महाप्रबंधक, पू. क्षे. भा. प्रे. के., 14, गोल्फ क्लब रोड, कोलकाता - 700033
General Manager, ERLDC, 14, Golf Club Road, Kolkata-700033
9. महाप्रबंधक, प. क्षे. भा. प्रे. के., एफ-3, एम आई डी सी क्षेत्र, अंधेरी, मुंबई - 400093
General Manager, WRLDC, F-3, MIDC Area, Andheri (East), Mumbai-400093
10. महाप्रबंधक, ऊ. क्षे. भा. प्रे. के., 18/ ए, शहीद जीत सिंह सनसनवाल मार्ग, नई दिल्ली - 110016
General Manager, NRLDC, 18/A, SJSS Marg, Katwaria Sarai, New Delhi-110016
11. कार्यपालक निदेशक, द. क्षे. भा. प्रे. के., 29, रेस कोर्स क्रॉस रोड, बंगलुरु - 560009
Executive Director, SRLDC, 29, Race Course Cross Road, Bangalore-560009
12. महाप्रबंधक, ऊ. पू. क्षे. भा. प्रे. के., डोंगतिह, लोअर नॉग्रह, लापलंग, शिलॉंग - 793006
General Manager, NERLDC, Dongtiah, Lower Nongrah, Laplang, Shillong-793006



POWER SYSTEM OPERATION CORPORATION LIMITED

(A wholly owned subsidiary of POWERGRID)

पाँवर सिस्टम ऑपरेशन कारपोरेशन लिमिटेड

NATIONAL LOAD DESPATCH CENTRE –राष्ट्रीय भार प्रेषण केन्द्र

मासिक ऑपरेशन रिपोर्ट

Monthly
Operation Report



अक्टूबर 2013

पावर सिस्टम ऑपरेशन कॉर्पोरेशन लिमिटेड
राष्ट्रीय भार प्रेषण केंद्र, नई दिल्ली

POWER SYSTEM OPERATION CORPORATION LTD
NATIONAL LOAD DESPATCH CENTRE, NEW DELHI



माह अक्टूबर 2013 के लिए प्रचालन निष्पादन रिपोर्ट
OPERATIONAL PERFORMANCE REPORT FOR THE
MONTH OF OCTOBER 2013

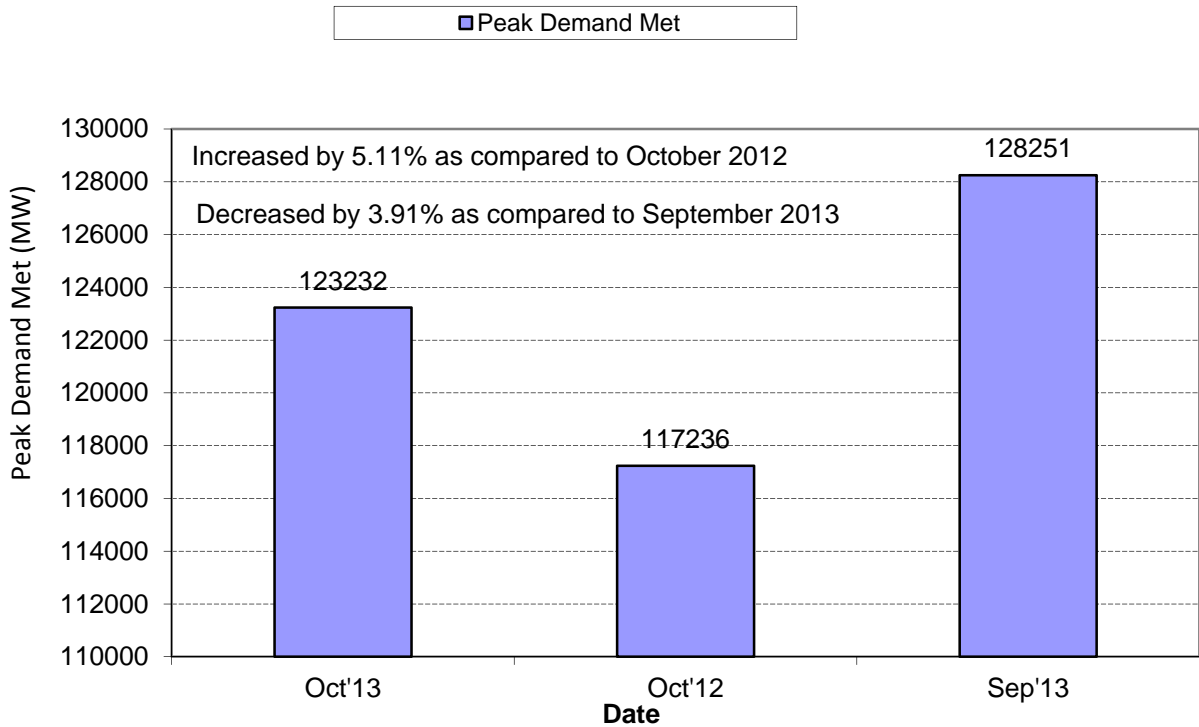
पृष्ठसूची CONTENTS

| | |
|--|-------|
| 1. माह अक्टूबर 2013 की सारांश रिपोर्ट SUMMARY OF REPORT FOR THE MONTH OF OCT' 2013 | 1-4 |
| 2. क्षेत्रवार स्थापित विद्युत क्षमता REGION WISE INSTALLED CAPACITY | 5 |
| 3. राष्ट्रीय स्तर पर संध्यकालीन शिखर मांगपूर्ति PEAK DEMAND MET AT NATIONAL LEVEL | 6-8 |
| 4. राष्ट्रीय स्तर पर विद्युत ऊर्जा खपत ENERGY CONSUMPTION AT NATIONAL LEVEL | 9-10 |
| 5. फ्रिक्वेंसी रूपरेखा FREQUENCY PROFILE | 11-12 |
| 6. राष्ट्रीय स्तर पर जल विद्युत ऊर्जा उत्पादन HYDRO GENERATION AT NATIONAL LEVEL | 13-14 |
| 7. राष्ट्रीय स्तर पर पन विद्युत ऊर्जा उत्पादन WIND GENERATION AT NATIONAL LEVEL | 15 |
| 8. ऊर्जा आपूर्ति की वास्तविक स्थिति ACTUAL POWER SUPPLY POSITION | 16 |
| 9. शिखर मांग आवश्यकता एवं आपूर्ति की पिछले वर्ष के अक्टूबर माह से तुलना ENERGY REQUIREMENT & MET COMPARISON WITH OCTP'2012 | 17 |
| 10. ऊर्जा आवश्यकता एवं आपूर्ति की पिछले वर्ष के अक्टूबर माह से तुलना PEAK DEMAND REQUIREMENT & MET COMPARISON WITH OCT'2012 | 18 |
| 11. क्षेत्रीय स्तर पर शिड्यूल एवं ड्रावल SCHEDULE & DRAWAL AT REGIONAL LEVEL | 19 |
| 12. अंतर क्षेत्रीय विनिमय INTER-REGIONAL EXCHANGES | 20 |
| 13. एसटीओए (द्विपक्षीय एवं सामूहिक) एवं यू आई का ब्यौरा BILATERAL & COLLECTIVE SHORT-TERM OPEN ACCESS & UI DETAILS | 21 |
| 14. पावर मार्केट की सूचना POWER MARKET INFORMATION | 22-23 |
| 15. अक्षय ऊर्जा प्रमाण - पत्र प्रक्रिया RENEWABLE ENERGY CERTIFICATE MECHANISM | 24-26 |

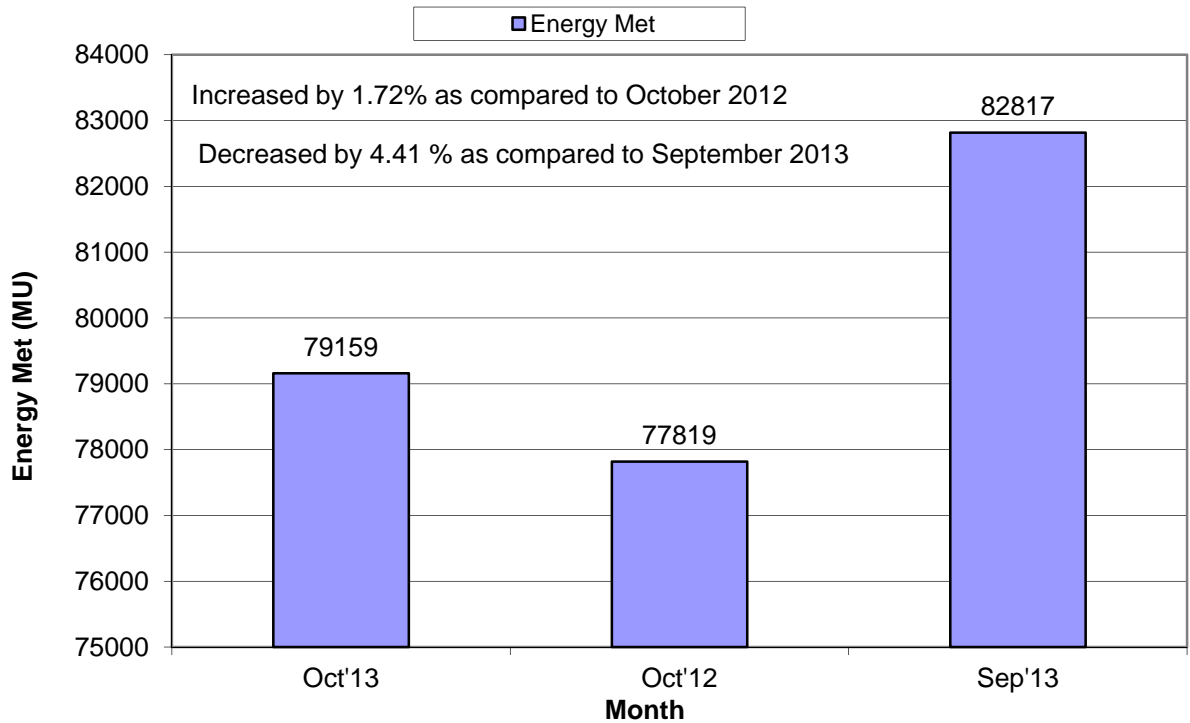
| | |
|---|-------|
| 16. मुख्य घटनाये एवं डिसटरबेनसेज IMPORTANT EVENTS/DISTURBANCES | 27-29 |
| 17. नये कमीशंड पारेषण तत्व NEW ELEMENTS COMMISSIONED | 30 |
| 18. विभव रूपरेखा VOLTAGE PROFILE | 31 |

1. SUMMARY OF REPORT FOR THE MONTH OF OCTOBER 2013

Peak Demand Met

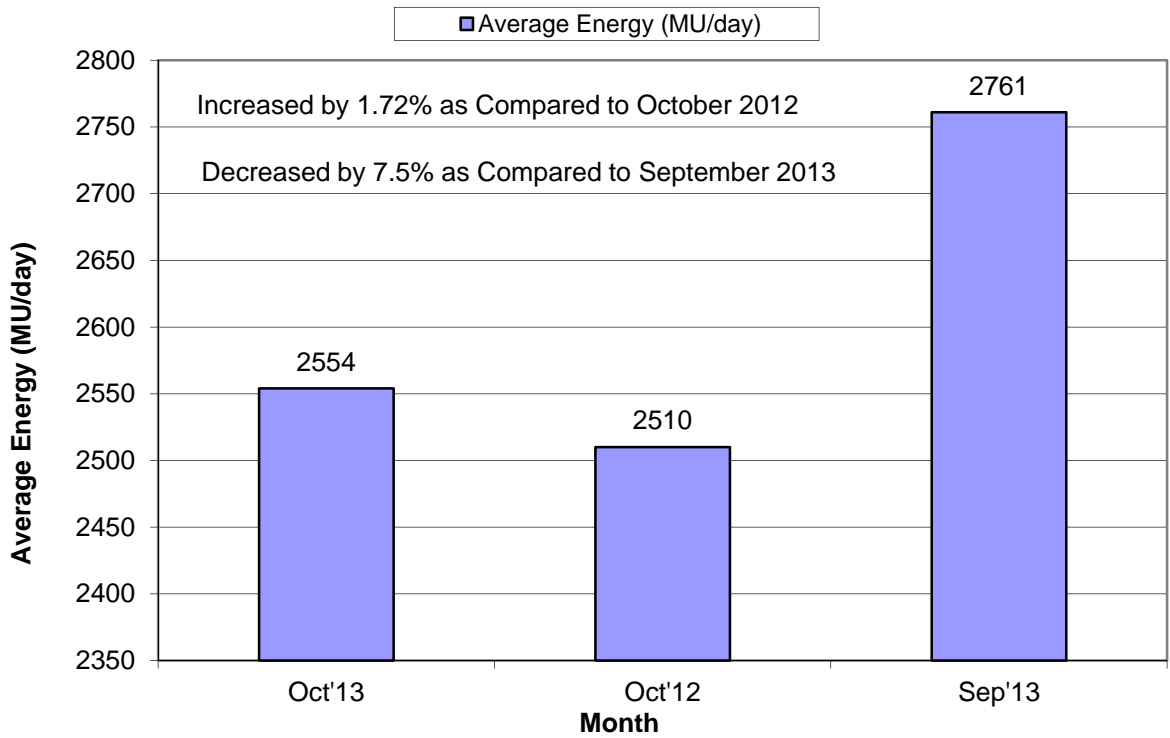


Energy Met

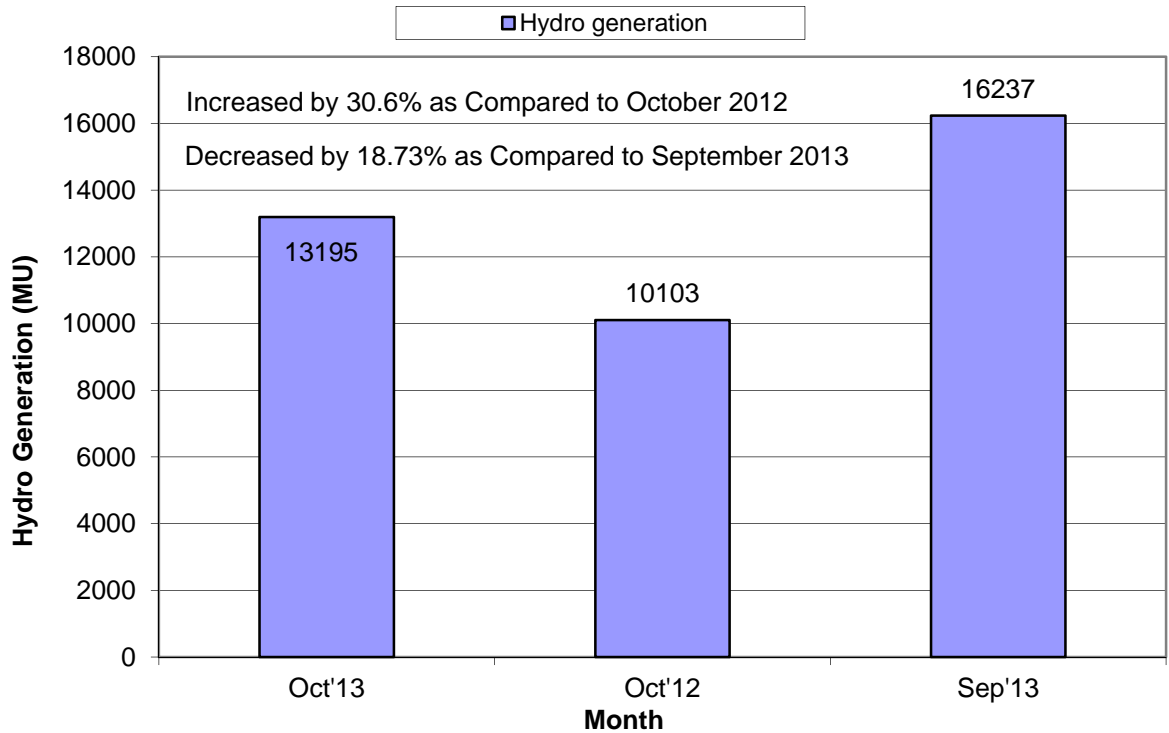


1. SUMMARY OF REPORT FOR THE MONTH OF OCTOBER 2013

Average Energy (MU/day)

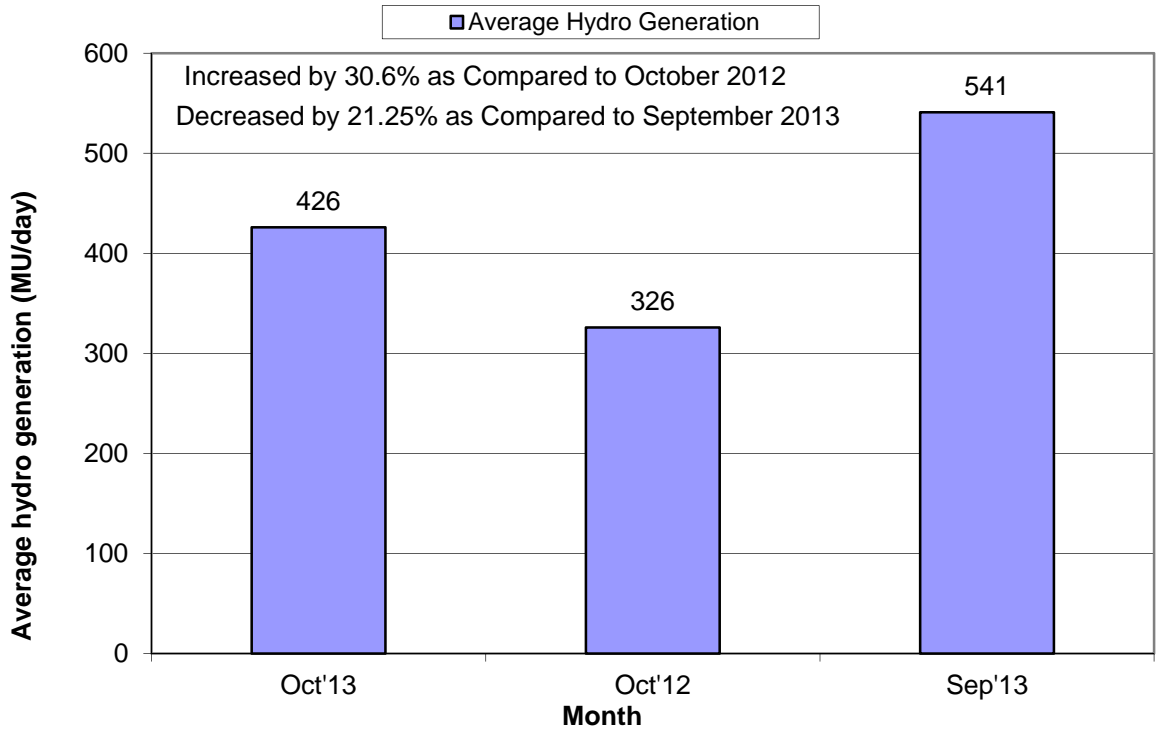


Hydro generation

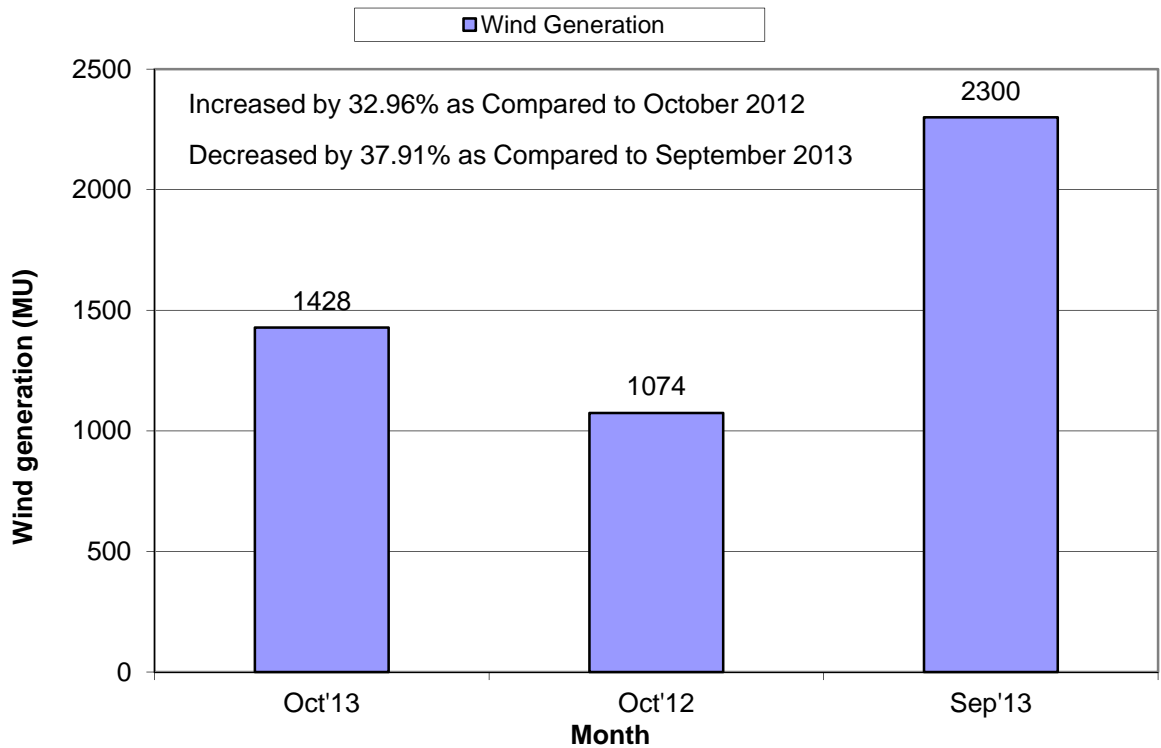


1. SUMMARY OF REPORT FOR THE MONTH OF OCTOBER 2013

Average Hydro Generation

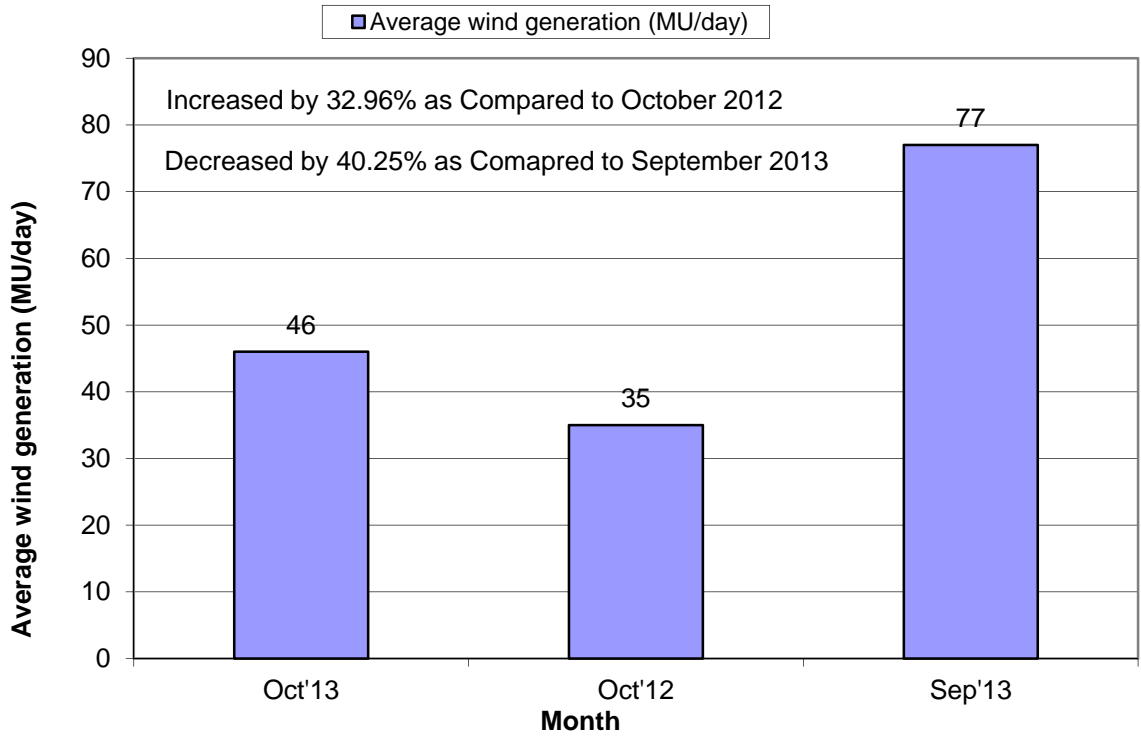


Wind Generation

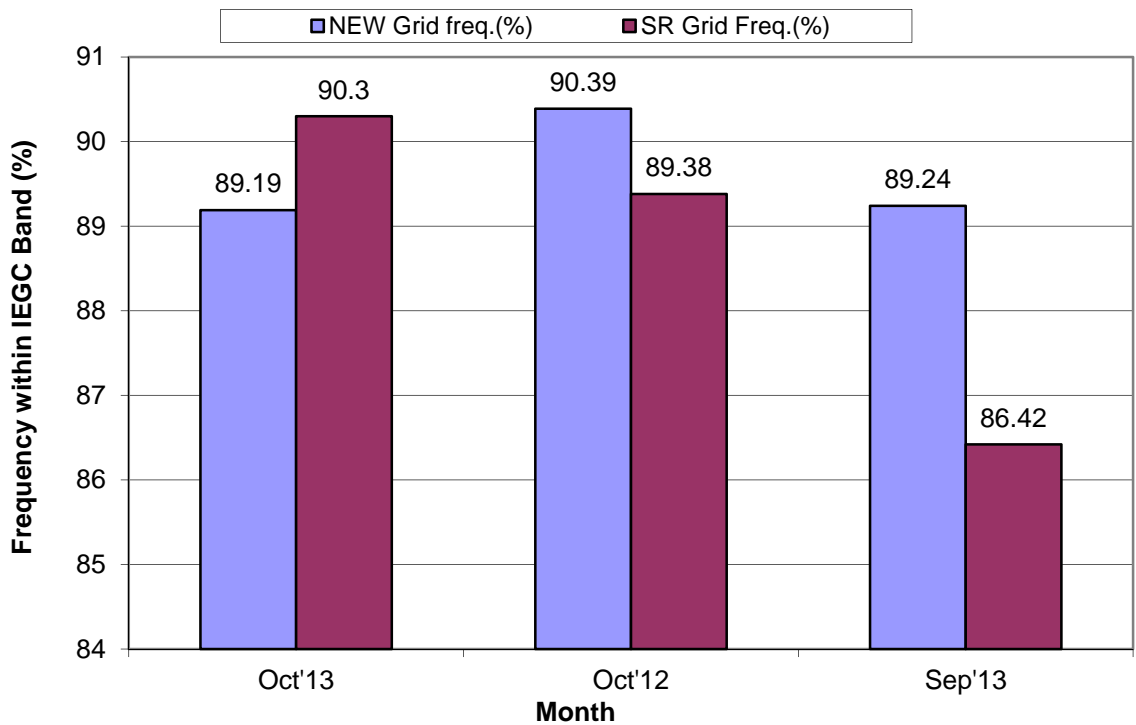


1. SUMMARY OF REPORT FOR THE MONTH OF OCTOBER 2013

Average wind generation (MU/day)



Frequency within IEGC Band



2. ALL INDIA REGIONWISE INSTALLED CAPACITY

As on 30.09.2013
(All figures are in MW)

| SL. NO. | REGION | THERMAL | | | | NUCLEAR | HYDRO | R.E.S. @ (MNRE) | TOTAL |
|------------------|---------------|---------------|--------------|-------------|---------------|-------------|--------------|-----------------|---------------|
| | | COAL | GAS | DSL | TOTAL | | | | |
| 1 | NORTHERN | 33424 | 5031 | 13 | 38468 | 1620 | 15570 | 5643 | 61301 |
| 2 | WESTERN | 51045 | 8988 | 17 | 60050 | 1840 | 7466 | 9402 | 78757 |
| 3 | SOUTHERN | 25783 | 4963 | 939 | 31685 | 1320 | 11398 | 12421 | 56823 |
| 4 | EASTERN | 24078 | 190 | 17 | 24285 | 0 | 4113 | 460 | 28858 |
| 5 | NORTH EASTERN | 60 | 1209 | 143 | 1411 | 0 | 1242 | 253 | 2906 |
| 6 | ISLANDS | 0 | 0 | 70 | 70 | 0 | 0 | 6 | 76 |
| All India | | 134388 | 20381 | 1200 | 155969 | 4780 | 39788 | 28184 | 228722 |

Remarks: Data taken from CEA website

**3. राष्ट्रीय स्तर पर संध्याकालीन शिखर विद्युत मांग पूर्ति
PEAK DEMAND MET AT NATIONAL LEVEL**

माह:- अक्टूबर 2013

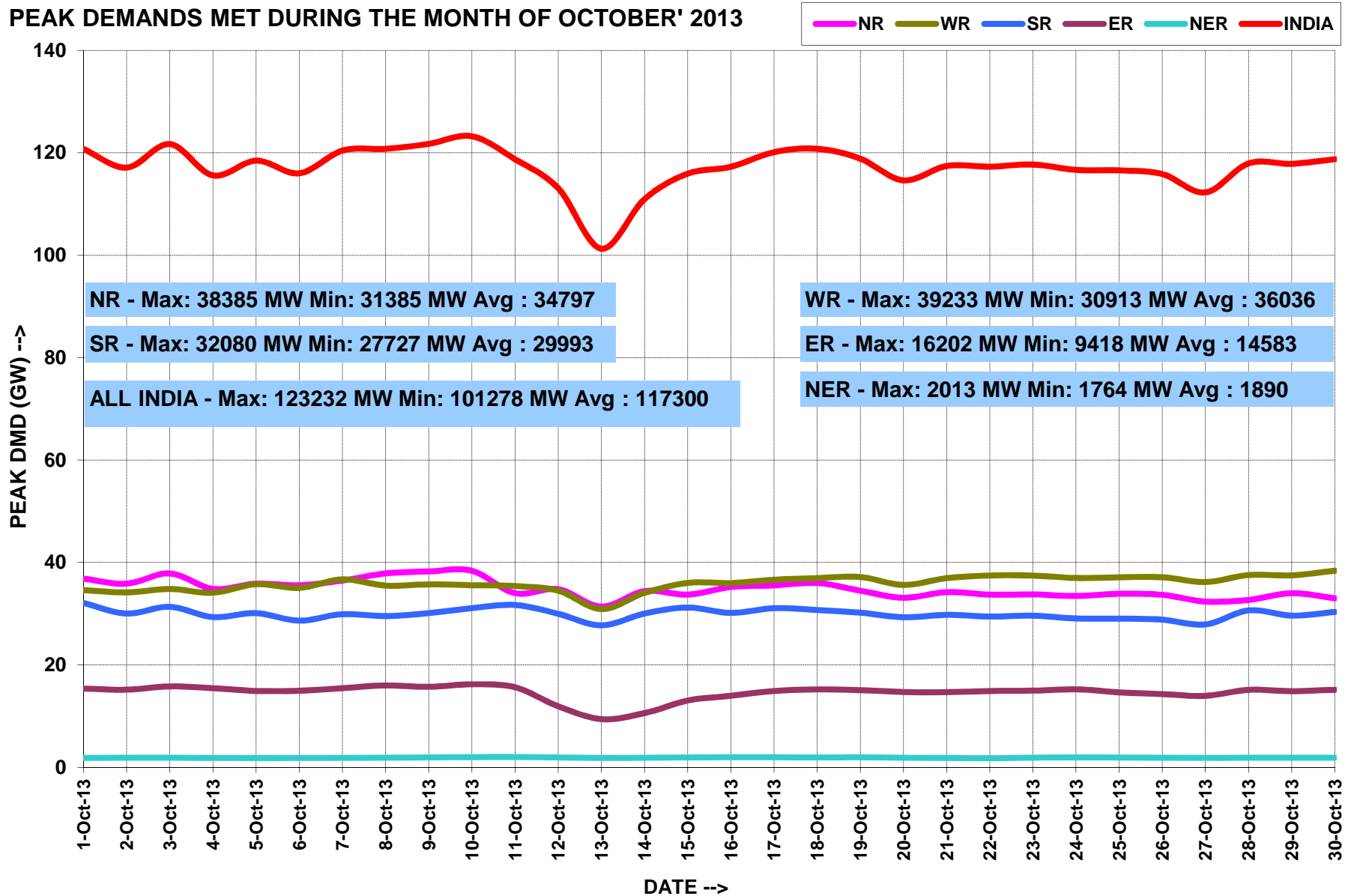
MONTH:- October 2013

सभी आंकड़े मेगावाट में All figures in MW

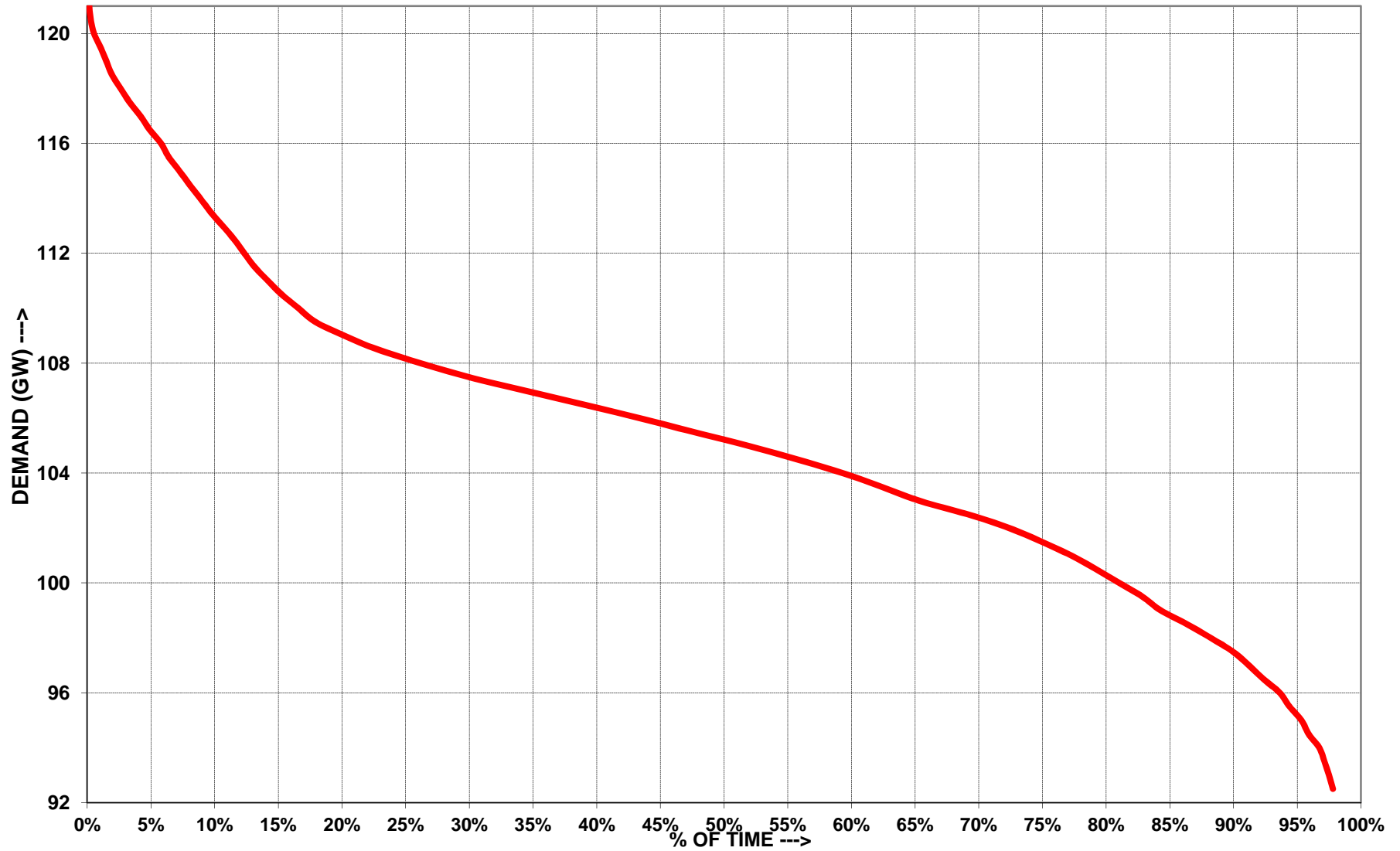
| दिनांक Date | उत्तरी क्षे. NR | पश्चिमी क्षे. WR | दक्षिणी क्षे. SR | पूर्वी क्षे. ER | पूर्वोत्तर क्षे. NER | कुल TOTAL |
|-------------------------------------|--------------------|---------------------|---------------------|--------------------|-------------------------|--------------|
| 01-Oct-13 | 36854 | 34587 | 32080 | 15369 | 1855 | 120745 |
| 02-Oct-13 | 35862 | 34164 | 30041 | 15161 | 1883 | 117111 |
| 03-Oct-13 | 37864 | 34819 | 31344 | 15804 | 1885 | 121716 |
| 04-Oct-13 | 34856 | 34100 | 29342 | 15457 | 1828 | 115583 |
| 05-Oct-13 | 35851 | 35759 | 30108 | 14914 | 1846 | 118478 |
| 06-Oct-13 | 35557 | 35046 | 28639 | 14962 | 1796 | 116000 |
| 07-Oct-13 | 36489 | 36711 | 29900 | 15467 | 1871 | 120438 |
| 08-Oct-13 | 37862 | 35496 | 29538 | 15978 | 1898 | 120772 |
| 09-Oct-13 | 38246 | 35724 | 30114 | 15722 | 1943 | 121749 |
| 10-Oct-13 | 38385 | 35564 | 31086 | 16202 | 1996 | 123232 |
| 11-Oct-13 | 34003 | 35390 | 31705 | 15644 | 2013 | 118755 |
| 12-Oct-13 | 34786 | 34492 | 29977 | 11917 | 1926 | 113098 |
| 13-Oct-13 | 31385 | 30913 | 27727 | 9418 | 1835 | 101278 |
| 14-Oct-13 | 34404 | 34062 | 30028 | 10580 | 1873 | 110947 |
| 15-Oct-13 | 33737 | 36018 | 31205 | 13040 | 1926 | 115926 |
| 16-Oct-13 | 35201 | 35984 | 30156 | 13972 | 1966 | 117279 |
| 17-Oct-13 | 35528 | 36633 | 31073 | 14913 | 1971 | 120118 |
| 18-Oct-13 | 35991 | 36966 | 30708 | 15228 | 1914 | 120807 |
| 19-Oct-13 | 34495 | 37161 | 30192 | 15061 | 1960 | 118869 |
| 20-Oct-13 | 33108 | 35626 | 29322 | 14712 | 1859 | 114627 |
| 21-Oct-13 | 34203 | 36930 | 29768 | 14667 | 1857 | 117425 |
| 22-Oct-13 | 33721 | 37452 | 29450 | 14912 | 1764 | 117299 |
| 23-Oct-13 | 33770 | 37442 | 29613 | 14969 | 1919 | 117713 |
| 24-Oct-13 | 33465 | 36975 | 29075 | 15239 | 1914 | 116668 |
| 25-Oct-13 | 33895 | 37112 | 29041 | 14634 | 1894 | 116576 |
| 26-Oct-13 | 33690 | 37132 | 28832 | 14305 | 1899 | 115858 |
| 27-Oct-13 | 32373 | 36178 | 27900 | 13959 | 1854 | 112264 |
| 28-Oct-13 | 32706 | 37555 | 30651 | 15134 | 1894 | 117940 |
| 29-Oct-13 | 33993 | 37498 | 29635 | 14869 | 1861 | 117856 |
| 30-Oct-13 | 33011 | 38395 | 30344 | 15144 | 1863 | 118757 |
| 31-Oct-13 | 33431 | 39233 | 31191 | 14731 | 1817 | 120403 |
| उच्चतम MAXIMUM | 38385 | 39233 | 32080 | 16202 | 2013 | 123232 |
| निम्नतम MINIMUM | 31385 | 30913 | 27727 | 9418 | 1764 | 101278 |
| औसत AVERAGE | 34797 | 36036 | 29993 | 14583 | 1890 | 117300 |
| अब तक का उच्चतम All Time Max. | 42255 | 40699 | 33602 | 16115 | 2013 | 128251 |
| दिनांक Date | 14.09.13 | 20.10.12 | 28.08.13 | 23.07.13 | 11.10.13 | 11.09.13 |

नोट : सभी आंकड़े 1900 बजे की मांगपूर्ति पर आधारित है । Note: The above figures corresponds to value at 1900 Hrs

PEAK DEMANDS MET DURING THE MONTH OF OCTOBER' 2013



ALL INDIA LOAD DURATION CURVE FOR OCTOBER' 2013



4. राष्ट्रीय स्तर पर विद्युत ऊर्जा आपूर्ति ENERGY MET AT NATIONAL LEVEL

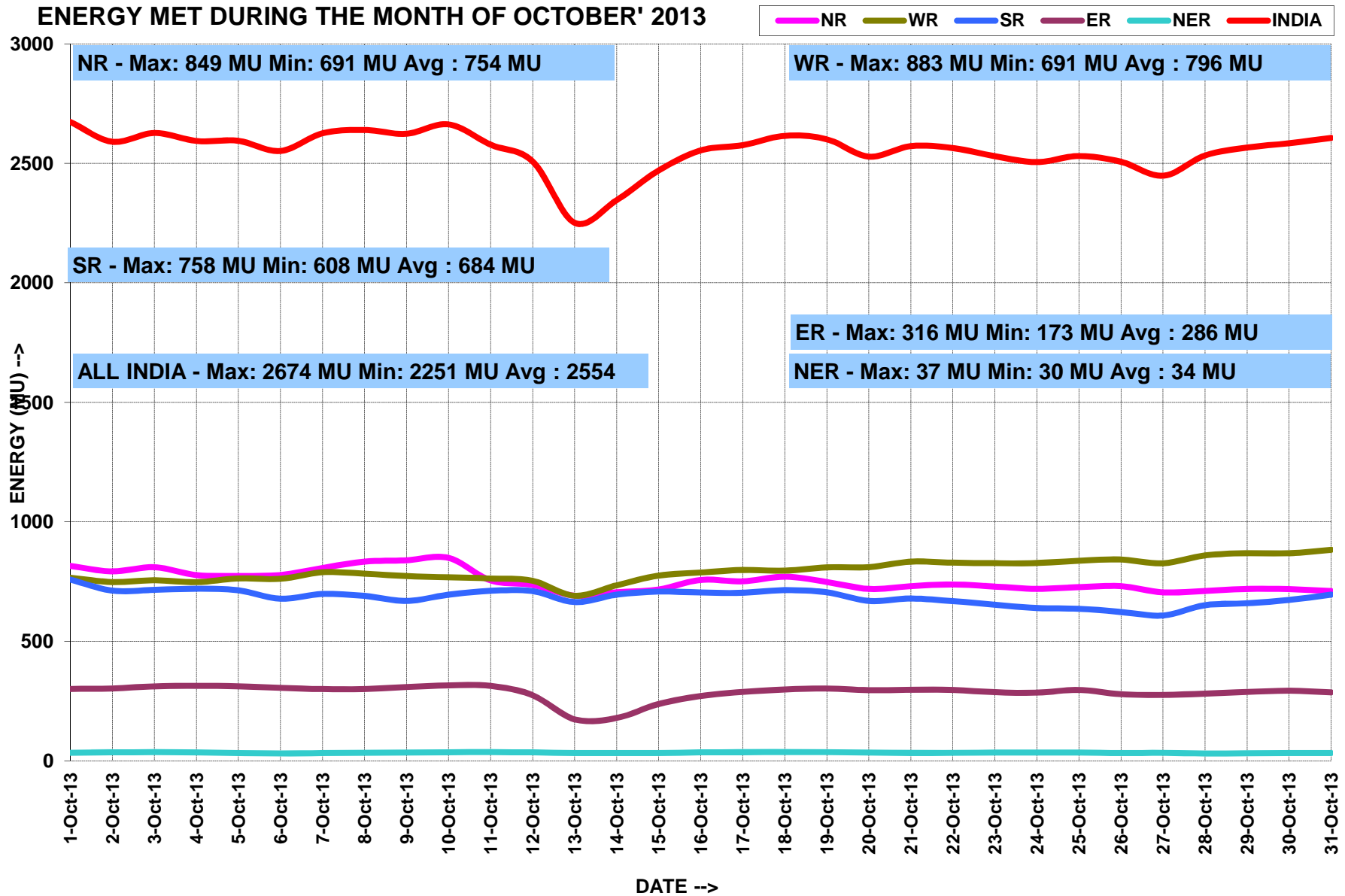
माह:- अक्टूबर 2013

MONTH:- October 2013

सभी आंकड़े मिलियन यूनिट में All figures in MU

| दिनांक Date | उत्तरी क्षे. NR | पश्चिमी क्षे. WR | दक्षिणी क्षे. SR | पूर्वी क्षे. ER | पूर्वोत्तर क्षे. NER | कुल TOTAL |
|--|--------------------|---------------------|---------------------|--------------------|-------------------------|-----------------|
| 1-Oct-13 | 815 | 766 | 758 | 301 | 34 | 2674 |
| 2-Oct-13 | 793 | 748 | 712 | 303 | 35 | 2590 |
| 3-Oct-13 | 810 | 755 | 715 | 312 | 35 | 2627 |
| 4-Oct-13 | 777 | 747 | 720 | 314 | 35 | 2594 |
| 5-Oct-13 | 774 | 763 | 713 | 312 | 33 | 2594 |
| 6-Oct-13 | 777 | 761 | 678 | 305 | 30 | 2552 |
| 7-Oct-13 | 807 | 789 | 698 | 300 | 32 | 2626 |
| 8-Oct-13 | 833 | 783 | 690 | 300 | 33 | 2640 |
| 9-Oct-13 | 839 | 773 | 669 | 309 | 34 | 2624 |
| 10-Oct-13 | 849 | 768 | 695 | 316 | 36 | 2663 |
| 11-Oct-13 | 755 | 763 | 711 | 313 | 36 | 2578 |
| 12-Oct-13 | 736 | 753 | 710 | 274 | 35 | 2508 |
| 13-Oct-13 | 691 | 691 | 664 | 173 | 33 | 2251 |
| 14-Oct-13 | 705 | 734 | 695 | 179 | 32 | 2346 |
| 15-Oct-13 | 717 | 775 | 708 | 238 | 33 | 2470 |
| 16-Oct-13 | 757 | 788 | 704 | 271 | 35 | 2554 |
| 17-Oct-13 | 751 | 798 | 703 | 288 | 36 | 2576 |
| 18-Oct-13 | 770 | 796 | 714 | 299 | 37 | 2615 |
| 19-Oct-13 | 748 | 810 | 705 | 302 | 36 | 2601 |
| 20-Oct-13 | 719 | 810 | 669 | 295 | 34 | 2528 |
| 21-Oct-13 | 731 | 833 | 679 | 297 | 32 | 2572 |
| 22-Oct-13 | 738 | 829 | 668 | 296 | 33 | 2564 |
| 23-Oct-13 | 729 | 827 | 653 | 287 | 34 | 2530 |
| 24-Oct-13 | 719 | 828 | 639 | 285 | 35 | 2505 |
| 25-Oct-13 | 727 | 837 | 636 | 297 | 34 | 2531 |
| 26-Oct-13 | 731 | 842 | 623 | 278 | 32 | 2507 |
| 27-Oct-13 | 705 | 827 | 608 | 276 | 33 | 2448 |
| 28-Oct-13 | 711 | 859 | 651 | 281 | 31 | 2533 |
| 29-Oct-13 | 719 | 869 | 659 | 288 | 31 | 2566 |
| 30-Oct-13 | 718 | 868 | 673 | 293 | 32 | 2584 |
| 31-Oct-13 | 710 | 883 | 695 | 286 | 32 | 2606 |
| कुल TOTAL | 23360 | 24673 | 21215 | 8867 | 1044 | 79159 |
| उच्चतम MAXIMUM | 849 | 883 | 758 | 316 | 37 | 2674 |
| निम्नतम MINIMUM | 691 | 691 | 608 | 173 | 30 | 2251 |
| औसत AVERAGE | 754 | 796 | 684 | 286 | 34 | 2554 |
| अब तक का उच्चतम All Time Max. | 969 | 902 | 758 | 338 | 38 | 2893 |
| दिनांक Date | 12.09.13 | 22.10.12 | 01.10.13 | 18.07.13 | 22.09.13 | 05.09.13 |

ENERGY MET DURING THE MONTH OF OCTOBER' 2013



5. अक्टूबर 2013 के लिए आवृत्ति रूपरेखा FREQUENCY PROFILE FOR OCT' 2013

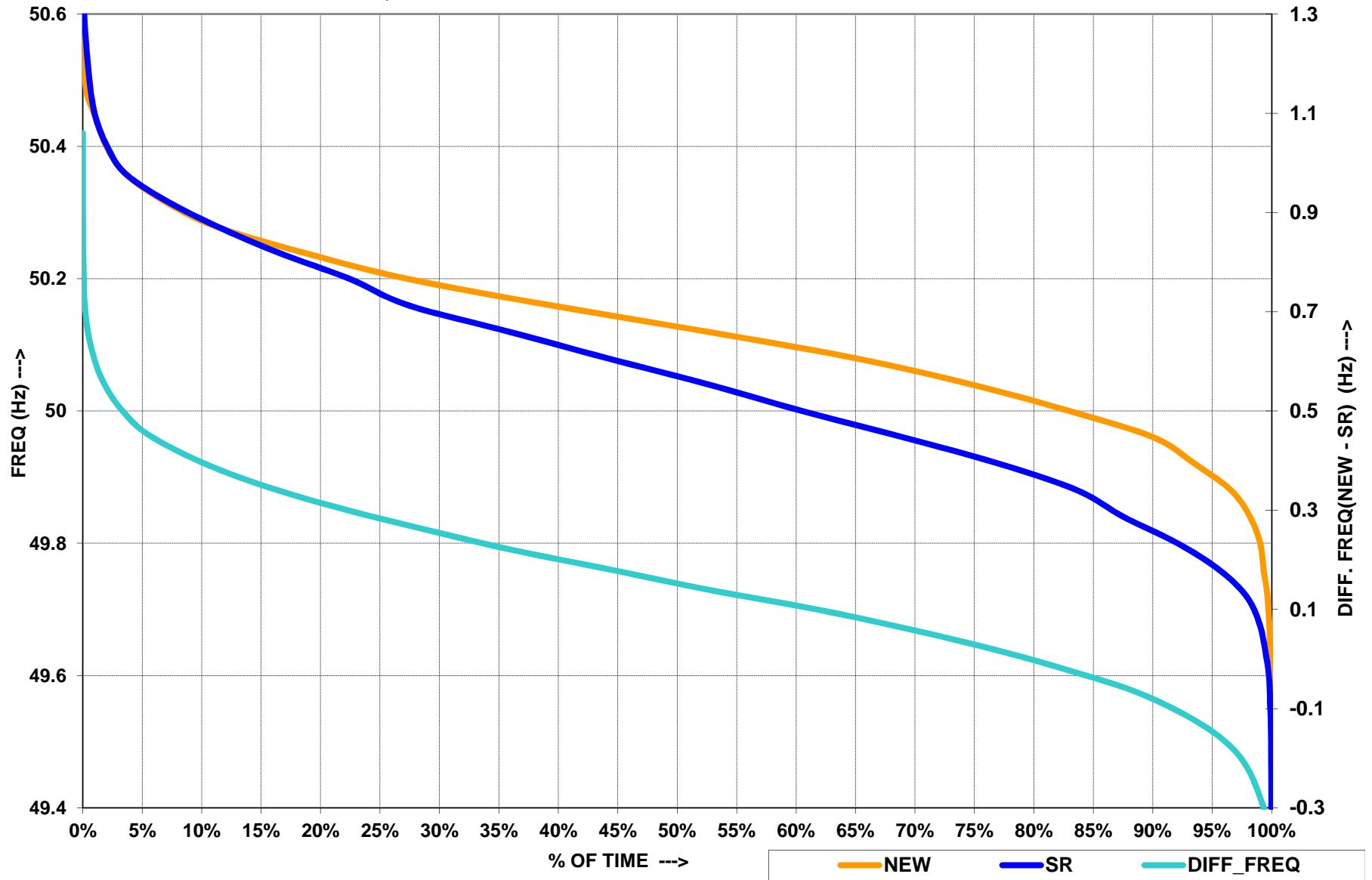
दक्षिणी क्षेत्रीय ग्रिड SR GRID

| फ्रिक्वेंसी रूपरेखा (Hz) | | <49.0 | 49.0-49.7 | <49.7 | 49.7-50.2 | >50.2 | उच्चतम फ्रिक्वेंसी | निम्नतम फ्रिक्वेंसी | औसत फ्रिक्वेंसी |
|--------------------------|--------|-------|-----------|-------|-----------|-------|--------------------|---------------------|-----------------|
| % समय | Apr-13 | 0.00 | 12.00 | 12.00 | 86.1 | 1.91 | 50.81 | 49.27 | 49.84 |
| | May-13 | 0.00 | 8.14 | 8.14 | 86.92 | 4.94 | 50.79 | 49.01 | 49.90 |
| | Jun-13 | 0.01 | 3.59 | 3.60 | 88.14 | 8.26 | 50.71 | 48.84 | 49.97 |
| | Jul-13 | 0.01 | 2.07 | 2.08 | 88.34 | 9.58 | 50.72 | 49.93 | 50.00 |
| | Aug-13 | 0.00 | 2.60 | 2.60 | 84.36 | 13.04 | 50.62 | 49.01 | 50.03 |
| | Sep-13 | 0.00 | 3.14 | 3.14 | 86.42 | 10.44 | 50.61 | 49.21 | 50.00 |
| | Oct-13 | 0.00 | 3.50 | 3.50 | 90.3 | 6.20 | 50.53 | 49.2 | 49.97 |

एन - ई - डब्ल्यू ग्रिड NEW GRID

| फ्रिक्वेंसी रूपरेखा (Hz) | | <49.0 | 49.0-49.7 | <49.7 | 49.7-50.2 | >50.2 | उच्चतम फ्रिक्वेंसी | निम्नतम फ्रिक्वेंसी | औसत फ्रिक्वेंसी |
|--------------------------|--------|-------|-----------|-------|-----------|-------|--------------------|---------------------|-----------------|
| % समय | Apr-13 | 0.00 | 3.24 | 3.24 | 89.8 | 7.00 | 50.67 | 49.33 | 50.03 |
| | May-13 | 0.00 | 1.00 | 0.96 | 87.05 | 11.99 | 50.94 | 49.25 | 50.05 |
| | Jun-13 | 0.00 | 1.60 | 1.60 | 80.85 | 17.55 | 50.77 | 49.05 | 50.07 |
| | Jul-13 | 0.00 | 0.50 | 0.50 | 84.74 | 14.76 | 50.63 | 49.02 | 50.07 |
| | Aug-13 | 0.00 | 0.72 | 0.72 | 75.17 | 24.11 | 50.77 | 49.31 | 50.11 |
| | Sep-13 | 0.00 | 1.51 | 1.51 | 89.24 | 9.25 | 50.62 | 49.21 | 50.02 |
| | Oct-13 | 0.00 | 1.01 | 1.01 | 89.19 | 9.80 | 50.63 | 49.28 | 50.03 |

FREQUENCY DURATION CURVES FOR OCTOBER' 2013



**6.राष्ट्रीय स्तर पर जल विद्युत उत्पादन
HYDRO GENERATION AT NATIONAL LEVEL**

माह:- अक्टूबर 2013

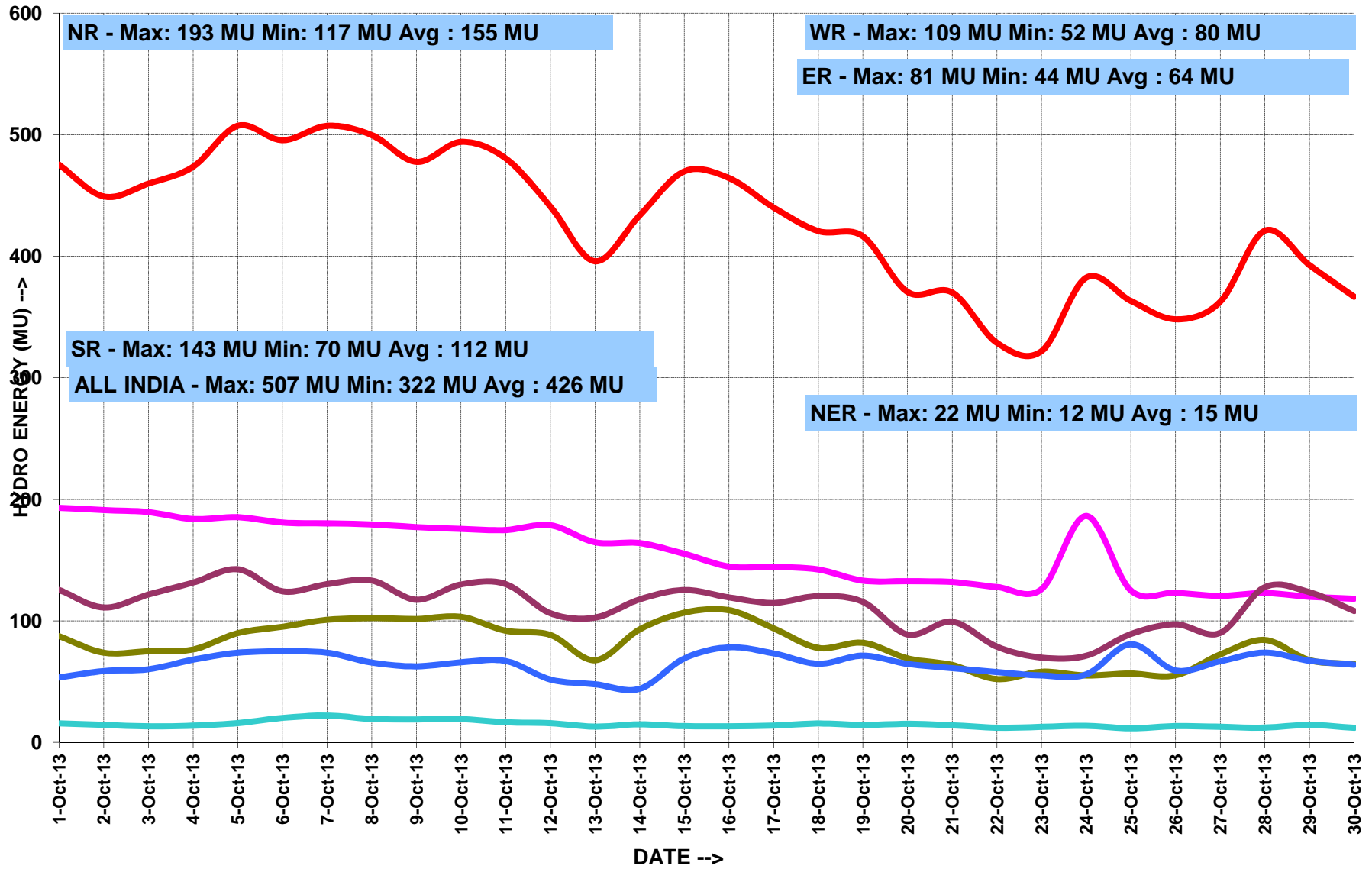
MONTH:- October 2013

सभी आंकड़े मिलियन यूनिट में All figures in MU

| दिनांक Date | ऊत्तरी क्षे. NR | पश्चिमी क्षे. WR | दक्षिणी क्षे. SR | पूर्वी क्षे. ER | पूर्वोत्तर क्षे. NER | कुल TOTAL |
|--|--------------------|---------------------|---------------------|--------------------|-------------------------|-----------------|
| 1-Oct-13 | 193 | 88 | 126 | 54 | 16 | 475 |
| 2-Oct-13 | 191 | 74 | 111 | 59 | 14 | 449 |
| 3-Oct-13 | 190 | 75 | 122 | 60 | 13 | 460 |
| 4-Oct-13 | 184 | 76 | 132 | 68 | 14 | 474 |
| 5-Oct-13 | 185 | 90 | 143 | 74 | 16 | 507 |
| 6-Oct-13 | 181 | 95 | 124 | 75 | 20 | 496 |
| 7-Oct-13 | 180 | 101 | 130 | 74 | 22 | 507 |
| 8-Oct-13 | 179 | 102 | 133 | 66 | 19 | 500 |
| 9-Oct-13 | 177 | 102 | 117 | 63 | 19 | 478 |
| 10-Oct-13 | 176 | 103 | 130 | 66 | 19 | 494 |
| 11-Oct-13 | 175 | 92 | 130 | 67 | 17 | 481 |
| 12-Oct-13 | 179 | 88 | 106 | 52 | 16 | 441 |
| 13-Oct-13 | 165 | 68 | 103 | 48 | 13 | 396 |
| 14-Oct-13 | 164 | 93 | 118 | 44 | 15 | 434 |
| 15-Oct-13 | 155 | 107 | 125 | 69 | 13 | 470 |
| 16-Oct-13 | 145 | 109 | 119 | 78 | 13 | 464 |
| 17-Oct-13 | 144 | 94 | 115 | 73 | 14 | 440 |
| 18-Oct-13 | 142 | 78 | 120 | 65 | 16 | 421 |
| 19-Oct-13 | 133 | 82 | 116 | 71 | 14 | 416 |
| 20-Oct-13 | 133 | 69 | 89 | 65 | 15 | 371 |
| 21-Oct-13 | 132 | 64 | 99 | 61 | 14 | 370 |
| 22-Oct-13 | 128 | 52 | 79 | 58 | 12 | 329 |
| 23-Oct-13 | 126 | 58 | 70 | 55 | 13 | 322 |
| 24-Oct-13 | 186 | 55 | 71 | 56 | 14 | 382 |
| 25-Oct-13 | 125 | 57 | 89 | 81 | 12 | 363 |
| 26-Oct-13 | 123 | 55 | 97 | 59 | 13 | 348 |
| 27-Oct-13 | 121 | 72 | 90 | 67 | 13 | 363 |
| 28-Oct-13 | 123 | 84 | 128 | 74 | 12 | 421 |
| 29-Oct-13 | 120 | 68 | 124 | 67 | 14 | 393 |
| 30-Oct-13 | 118 | 64 | 108 | 64 | 12 | 367 |
| 31-Oct-13 | 117 | 68 | 108 | 59 | 12 | 364 |
| कुल TOTAL | 4790 | 2483 | 3472 | 1990 | 460 | 13195 |
| उच्चतम MAXIMUM | 193 | 109 | 143 | 81 | 22 | 507 |
| निम्नतम MINIMUM | 117 | 52 | 70 | 44 | 12 | 322 |
| औसत AVERAGE | 155 | 80 | 112 | 64 | 15 | 426 |
| अब तक का उच्चतम All Time Max. | 319 | 142 | 202 | 91 | 27 | 712 |
| दिनांक Date | 22.08.13 | 29.09.11 | 08.08.13 | 07.09.13 | 14.09.10 | 27.08.13 |

HYDRO ENERGY DURING THE MONTH OF OCTOBER' 2013

NR WR SR ER NER INDIA



**7. राष्ट्रीय स्तर पर पवन ऊर्जा उत्पादन
WIND GENERATION AT NATIONAL LEVEL**

माह:- अक्टूबर 2013

MONTH:- October 2013

सभी आंकड़े मिलियन यूनिट में All figures in MU

| दिनांक Date | ऊत्तरी क्षे. NR | पश्चिमी क्षे. WR | दक्षिणी क्षे. SR | पूर्वी क्षे. ER | पूर्वोत्तर क्षे. NER | कुल TOTAL |
|--|--------------------|---------------------|---------------------|--------------------|-------------------------|--------------|
| 1-Oct-13 | 4.3 | 23.0 | 47.9 | | | 75.2 |
| 2-Oct-13 | 4.2 | 12.7 | 37.4 | | | 54.3 |
| 3-Oct-13 | 3.1 | 12.6 | 56.5 | | | 72.2 |
| 4-Oct-13 | 2.3 | 20.1 | 71.3 | | | 93.7 |
| 5-Oct-13 | 2.1 | 15.4 | 64.5 | | | 82.0 |
| 6-Oct-13 | 2.5 | 16.0 | 44.2 | | | 62.7 |
| 7-Oct-13 | 1.7 | 8.1 | 45.0 | | | 54.8 |
| 8-Oct-13 | 2.7 | 12.1 | 38.6 | | | 53.4 |
| 9-Oct-13 | 3.9 | 10.0 | 37.5 | | | 51.4 |
| 10-Oct-13 | 3.1 | 10.9 | 32.2 | | | 46.2 |
| 11-Oct-13 | 2.0 | 13.0 | 50.7 | | | 65.7 |
| 12-Oct-13 | 6.4 | 10.4 | 57.2 | | | 74.0 |
| 13-Oct-13 | 1.5 | 8.3 | 40.8 | | | 50.6 |
| 14-Oct-13 | 4.6 | 8.5 | 45.6 | | | 58.7 |
| 15-Oct-13 | 2.8 | 7.9 | 35.0 | | | 45.7 |
| 16-Oct-13 | 6.4 | 6.2 | 16.2 | | | 28.8 |
| 17-Oct-13 | 7.4 | 5.8 | 6.2 | | | 19.4 |
| 18-Oct-13 | 4.9 | 9.1 | 7.9 | | | 21.9 |
| 19-Oct-13 | 1.9 | 5.6 | 10.5 | | | 18.0 |
| 20-Oct-13 | 1.7 | 6.3 | 6.6 | | | 14.6 |
| 21-Oct-13 | 2.3 | 6.8 | 12.4 | | | 21.5 |
| 22-Oct-13 | 4.1 | 11.9 | 15.8 | | | 31.8 |
| 23-Oct-13 | 4.8 | 19.4 | 18.1 | | | 42.3 |
| 24-Oct-13 | 6.9 | 18.9 | 19.6 | | | 45.4 |
| 25-Oct-13 | 5.8 | 15.7 | 29.0 | | | 50.5 |
| 26-Oct-13 | 4.1 | 11.3 | 33.4 | | | 48.8 |
| 27-Oct-13 | 1.9 | 4.6 | 34.2 | | | 40.7 |
| 28-Oct-13 | 3.1 | 4.8 | 29.3 | | | 37.2 |
| 29-Oct-13 | 14.8 | 5.0 | 8.0 | | | 27.8 |
| 30-Oct-13 | 7.7 | 5.2 | 8.0 | | | 20.9 |
| 31-Oct-13 | 6.1 | 5.2 | 6.4 | | | 17.7 |
| कुल TOTAL | 131 | 331 | 966 | ... | ... | 1428 |
| उच्चतम MAXIMUM | 15 | 23 | 71 | ... | ... | 94 |
| निम्नतम MINIMUM | 2 | 5 | 6 | ... | ... | 15 |
| औसत AVERAGE | 4 | 11 | 31 | ... | ... | 46 |
| अब तक का उच्चतम All Time Max. | 34.9 | 83.5 | 114.8 | ... | ... | 223.8 |
| दिनांक Date | 12.06.12 | 03.08.12 | 14.06.13 | ... | ... | 03.08.12 |

8. ACTUAL POWER SUPPLY POSITION - OCTOBER 2013

| REGION | STATE | Requirement/Availability in MU/DAY | | | Requirement/Availability in MU | | | | Peak Demand/Peak Met in MW | | | |
|------------------|-------------------|------------------------------------|-------------|---------------------------|--------------------------------|--------------|---------------------------|---------------|----------------------------|----------------|---------------------------|---------------|
| | | Requirement | Energy met | Surplus(+)/ Deficit(-) | Requirement | Energy met | Surplus(+)/ Deficit(-) | % Shortage | Requirement | Peak Demand | Surplus(+)/ Deficit(-) | % Shortage |
| NR | Chandigarh | 4 | 4 | 0 | 123 | 123 | 0 | 0.0 | 245 | 245 | 0 | 0.0 |
| | Delhi | 75 | 75 | 0 | 2317 | 2315 | -1 | -0.1 | 4316 | 4306 | -10 | -0.2 |
| | Haryana | 113 | 112 | -1 | 3502 | 3485 | -17 | -0.5 | 6430 | 6243 | -187 | -2.9 |
| | H.P. | 23 | 23 | 0 | 723 | 719 | -4 | -0.5 | 1270 | 1270 | 0 | 0.0 |
| | J&K | 40 | 32 | -8 | 1240 | 991 | -249 | -20.1 | 2320 | 1852 | -468 | -20.2 |
| | Punjab | 120 | 120 | 0 | 3712 | 3712 | 0 | 0.0 | 7332 | 7332 | 0 | 0.0 |
| | Rajasthan | 149 | 149 | 0 | 4610 | 4611 | 2 | 0.0 | 7899 | 7707 | -192 | -2.4 |
| | U.P. | 247 | 209 | -38 | 7648 | 6483 | -1165 | -15.2 | 12134 | 10984 | -1150 | -9.5 |
| | Uttarakhand | 31 | 30 | -1 | 966 | 937 | -28 | -2.9 | 1670 | 1670 | 0 | 0.0 |
| | NFF/Railway | 2 | 2 | 0 | 68 | 68 | 0 | 0.0 | 100 | 100 | 0 | 0.0 |
| | TOTAL | 961 | 756 | -205 | 29798 | 23443 | -6356 | -21.3 | 41153 | 38385 | -2768 | -6.7 |
| WR | Gujarat | 224 | 224 | 0 | 6959 | 6953 | -6 | -0.1 | 11351 | 11357 | 6 | 0.1 |
| | Madhya Pradesh | 134 | 134 | 0 | 4167 | 4167 | 0 | 0.0 | 7932 | 7937 | 5 | 0.1 |
| | Chhattisgarh | 58 | 58 | 0 | 1794 | 1790 | -4 | -0.2 | 3048 | 3024 | -24 | -0.8 |
| | Maharashtra | 350 | 345 | -5 | 10844 | 10692 | -152 | -1.4 | 17291 | 16925 | -366 | -2.1 |
| | Goa | 8 | 8 | 0 | 250 | 249 | -1 | -0.3 | 425 | 411 | -14 | -3.3 |
| | D&D | 6 | 6 | 0 | 185 | 185 | 0 | 0.0 | 271 | 266 | -5 | -1.8 |
| | DNH | 15 | 15 | 0 | 460 | 459 | 0 | -0.1 | 658 | 653 | -5 | -0.8 |
| | ESIL | 6 | 6 | 0 | 177 | 177 | 0 | -0.1 | 376 | 321 | -55 | -14.6 |
| | TOTAL | 801 | 796 | -5 | 24835 | 24672 | -162 | -0.7 | 39273 | 39233 | -40 | -0.1 |
| SR | AP-TRANSCO | 236 | 227 | -9 | 7314 | 7039 | -275 | -3.8 | 13032 | 11914 | -1118 | -8.6 |
| | KPTCL | 159 | 150 | -10 | 4944 | 4639 | -305 | -6.2 | 8307 | 7957 | -350 | -4.2 |
| | KSEB | 58 | 57 | -1 | 1798 | 1761 | -37 | -2.1 | 3528 | 2814 | -714 | -20.2 |
| | TNEB | 252 | 245 | -7 | 7811 | 7587 | -224 | -2.9 | 12810 | 12118 | -692 | -5.4 |
| | PONDICHERRY | 6 | 6 | 0 | 196 | 185 | -11 | -5.6 | 356 | 319 | -37 | -10.4 |
| | TOTAL | 712 | 684 | -28 | 22064 | 21211 | -853 | -3.9 | 37173 | 35156 | -2017 | -5.4 |
| ER | Bihar | 43 | 39 | -4 | 1345 | 1209 | -136 | -10.1 | 2700 | 2230 | -470 | -17.4 |
| | JSEB | 23 | 19 | -5 | 720 | 578 | -142 | -19.7 | 1200 | 984 | -216 | -18.0 |
| | DVC | 54 | 53 | -1 | 1670 | 1648 | -22 | -1.3 | 2695 | 2718 | 23 | 0.9 |
| | Odisha | 74 | 59 | -15 | 2290 | 1836 | -454 | -19.8 | 3650 | 3658 | 8 | 0.2 |
| | West Bengal | 138 | 118 | -20 | 4270 | 3651 | -619 | -14.5 | 7480 | 7132 | -348 | -4.7 |
| | TOTAL | 332 | 288 | -44 | 10295 | 8922 | -1373 | -13.3 | 17301 | 16260 | -1041 | -6.0 |
| NER | Arunachal Pradesh | 1 | 1 | 0 | 43 | 40 | -2 | -5.0 | 115 | 113 | -2 | -1.3 |
| | Assam | 22 | 21 | -1 | 676 | 646 | -31 | -4.5 | 1266 | 1220 | -46 | -3.6 |
| | Manipur | 1 | 1 | 0 | 45 | 42 | -3 | -7.4 | 114 | 111 | -3 | -2.7 |
| | MeSEB | 5 | 4 | 0 | 149 | 138 | -10 | -7.0 | 278 | 276 | -2 | -0.7 |
| | Mizoram | 1 | 1 | 0 | 38 | 36 | -1 | -4.0 | 61 | 60 | 0 | -0.6 |
| | Nagaland | 1 | 1 | 0 | 44 | 42 | -2 | -4.0 | 99 | 99 | -1 | -0.8 |
| | Tripura | 4 | 3 | 0 | 109 | 105 | -4 | -3.3 | 254 | 250 | -4 | -1.7 |
| | TOTAL | 36 | 34 | -2 | 1104 | 1050 | -53 | -4.8 | 2187 | 2129 | -58 | -2.7 |
| ALL INDIA | | 2842 | 2554 | -284 | 88095 | 79159 | -8797 | -10.1 | 137087 | 123232 | -13855 | -10.1 |

9. ENERGY COMPARISON OF OCTOBER 2013 Vs OCTOBER 2012

| REGION | STATE | Energy Requirement (MU) | | | | | Energy Met (MU) | | | | |
|------------------|-------------------|-------------------------|--------------|--------------|-------------|--------------------|-----------------|--------------|--------------|-------------|--------------------|
| | | Oct-12 | Oct-13 | Difference | % Change | Average for Oct-13 | Oct-12 | Oct-13 | Difference | % Change | Average for Oct-13 |
| NR | Chandigarh | 117 | 123 | 6 | 5 | 4.0 | 117 | 123 | 6 | 5 | 4.0 |
| | Delhi | 2099 | 2317 | 218 | 10 | 74.7 | 2097 | 2315 | 218 | 10 | 74.7 |
| | Haryana | 3537 | 3502 | -36 | -1 | 113.0 | 3401 | 3485 | 84 | 2 | 112.4 |
| | H.P. | 714 | 723 | 9 | 1 | 23.3 | 704 | 719 | 15 | 2 | 23.2 |
| | J&K | 1288 | 1240 | -48 | -4 | 40.0 | 966 | 991 | 25 | 3 | 32.0 |
| | Punjab | 3679 | 3712 | 34 | 1 | 119.8 | 3536 | 3712 | 176 | 5 | 119.8 |
| | Rajasthan | 4913 | 4610 | -303 | -6 | 148.7 | 4809 | 4611 | -198 | -4 | 148.8 |
| | U.P. | 7956 | 7648 | -309 | -4 | 246.7 | 6424 | 6483 | 58 | 1 | 209.1 |
| | Uttarakhand | 926 | 966 | 40 | 4 | 31.2 | 874 | 937 | 64 | 7 | 30.2 |
| | NFF/Railway | 73 | 68 | -5 | -7 | 2.2 | 73 | 68 | -5 | -7 | 2.2 |
| | TOTAL | 25302 | 29798 | 4496 | 18 | 961.2 | 23002 | 23443 | 441 | 2 | 756.2 |
| WR | Gujarat | 8255 | 6959 | -1296 | -16 | 224.5 | 8244 | 6953 | -1291 | -16 | 224.3 |
| | Madhya Pradesh | 4731 | 4167 | -564 | -12 | 134.4 | 4358 | 4167 | -191 | -4 | 134.4 |
| | Chhattisgarh | 1994 | 1794 | -200 | -10 | 57.9 | 1982 | 1790 | -192 | -10 | 57.7 |
| | Maharashtra | 10894 | 10844 | -50 | 0 | 349.8 | 10600 | 10692 | 92 | 1 | 344.9 |
| | Goa | 236 | 250 | 14 | 6 | 8.1 | 231 | 249 | 18 | 8 | 8.0 |
| | D&D | 185 | 185 | 0 | 0 | 6.0 | 171 | 185 | 13 | 8 | 6.0 |
| | DNH | 415 | 460 | 45 | 11 | 14.8 | 415 | 459 | 45 | 11 | 14.8 |
| | ESIL | | 177 | | | 5.7 | | 177 | | | 5.7 |
| | TOTAL | 26709 | 24835 | -1874 | -7 | 801.1 | 26000 | 24672 | -1328 | -5 | 795.9 |
| SR | AP-TRANSCO | 8592 | 7314 | -1278 | -15 | 235.9 | 6965 | 7039 | 74 | 1 | 227.1 |
| | KPTCL | 5278 | 4944 | -334 | -6 | 159.5 | 4596 | 4639 | 43 | 1 | 149.6 |
| | KSEB | 1763 | 1798 | 35 | 2 | 58.0 | 1671 | 1761 | 90 | 5 | 56.8 |
| | TNEB | 7226 | 7811 | 585 | 8 | 252.0 | 5568 | 7587 | 2019 | 36 | 244.7 |
| | PONDY | 178 | 196 | 18 | 10 | 6.3 | 175 | 185 | 10 | 6 | 6.0 |
| | | TOTAL | 23037 | 22064 | -973 | -4 | 711.7 | 18974 | 21211 | 2237 | 12 |
| ER | Bihar | 1280 | 1345 | 65 | 5 | 43.4 | 981 | 1209 | 228 | 23 | 39.0 |
| | JSEB | 630 | 720 | 90 | 14 | 23.2 | 569 | 578 | 9 | 2 | 18.6 |
| | DVC | 1570 | 1670 | 100 | 6 | 53.9 | 1695 | 1648 | -47 | -3 | 53.2 |
| | Odisha | 2170 | 2290 | 120 | 6 | 73.9 | 1973 | 1836 | -137 | -7 | 59.2 |
| | West Bengal | 3863 | 4270 | 407 | 11 | 137.7 | 3805 | 3651 | -154 | -4 | 117.8 |
| | TOTAL | 9513 | 10295 | 782 | 8 | 332.1 | 9023 | 8922 | -101 | -1 | 287.8 |
| NER | Arunachal Pradesh | 51 | 43 | -8 | -16 | 1.4 | 47 | 40 | -7 | -14 | 1.3 |
| | Assam | 584 | 676 | 92 | 16 | 21.8 | 564 | 646 | 82 | 15 | 20.8 |
| | Manipur | 55 | 45 | -10 | -17 | 1.5 | 52 | 42 | -10 | -19 | 1.4 |
| | MeSEB | 154 | 149 | -5 | -3 | 4.8 | 131 | 138 | 8 | 6 | 4.5 |
| | Mizoram | 35 | 38 | 2 | 7 | 1.2 | 32 | 36 | 4 | 12 | 1.2 |
| | Nagaland | 50 | 44 | -6 | -12 | 1.4 | 47 | 42 | -5 | -10 | 1.4 |
| | Tripura | 101 | 109 | 8 | 8 | 3.5 | 96 | 105 | 9 | 10 | 3.4 |
| | TOTAL | 1029 | 1104 | 75 | 7 | 35.6 | 969 | 1050 | 81 | 8 | 33.9 |
| ALL INDIA | | 85590 | 88095 | 2505 | 3 | 2841.8 | 77968 | 79159 | 1330 | 2 | 2553.5 |

10. DEMAND COMPARISON OF OCTOBER 2013 Vs OCTOBER 2012

| REGION | STATE | Peak Requirement (MW) | | | | Peak Met (MW) | | | |
|------------------|-------------------|-----------------------|---------------|--------------|-------------|---------------|---------------|--------------|-------------|
| | | Oct-12 | Oct-13 | Difference | % Change | Oct-12 | Oct-13 | Difference | % Change |
| NR | Chandigarh | 242 | 245 | 3 | 1.2 | 242 | 245 | 3 | 1.2 |
| | Delhi | 3995 | 4316 | 321 | 8.0 | 3995 | 4306 | 311 | 7.8 |
| | Haryana | 6429 | 6430 | 1 | 0.0 | 5989 | 6243 | 254 | 4.2 |
| | H.P. | 1298 | 1270 | -28 | -2.2 | 1298 | 1270 | -28 | -2.2 |
| | J&K | 2248 | 2320 | 72 | 3.2 | 1686 | 1852 | 166 | 9.8 |
| | Punjab | 8441 | 7332 | -1109 | -13.1 | 6860 | 7332 | 472 | 6.9 |
| | Rajasthan | 7454 | 7899 | 445 | 6.0 | 7430 | 7707 | 277 | 3.7 |
| | U.P. | 11883 | 12134 | 251 | 2.1 | 10471 | 10984 | 513 | 4.9 |
| | Uttarakhand | 1672 | 1670 | -2 | -0.1 | 1592 | 1670 | 78 | 4.9 |
| | NFF/Railway | 108 | 100 | -8 | -7.4 | 108 | 100 | -8 | -7.4 |
| | TOTAL | 40856 | 41153 | 297 | 0.7 | 36518 | 38385 | 1867 | 5.1 |
| WR | Gujarat | 12387 | 11351 | -1036 | -8.4 | 12348 | 11357 | -991 | -8.0 |
| | Madhya Pradesh | 9130 | 7932 | -1198 | -13.1 | 9013 | 7937 | -1076 | -11.9 |
| | Chhattisgarh | 3457 | 3048 | -409 | -11.8 | 3320 | 3024 | -296 | -8.9 |
| | Maharashtra | 18437 | 17291 | -1146 | -6.2 | 17268 | 16925 | -343 | -2.0 |
| | Goa | 473 | 425 | -48 | -10.1 | 418 | 411 | -7 | -1.7 |
| | D&D | 276 | 271 | -5 | -1.8 | 247 | 266 | 19 | 7.7 |
| | DNH | 586 | 658 | 72 | 12.3 | 579 | 653 | 74 | 12.8 |
| | ESIL | | 376 | | | | 321 | | |
| | TOTAL | 41478 | 39273 | -2205 | -5.3 | 40890 | 39233 | -1657 | -4.1 |
| SR | AP-TRANSCO | 12657 | 13032 | 375 | 3.0 | 10901 | 11914 | 1013 | 9.3 |
| | KPTCL | 8772 | 8307 | -465 | -5.3 | 7601 | 7957 | 356 | 4.7 |
| | KSEB | 3389 | 3528 | 139 | 4.1 | 3037 | 2814 | -223 | -7.3 |
| | TNEB | 12753 | 12810 | 57 | 0.4 | 10477 | 12118 | 1641 | 15.7 |
| | PONDY | 317 | 356 | 39 | 12.3 | 315 | 319 | 4 | 1.3 |
| | | TOTAL | 36372 | 37173 | 801 | 2.2 | 29971 | 35156 | 5185 |
| ER | Bihar | 2500 | 2700 | 200 | 8.0 | 1684 | 2230 | 546 | 32.4 |
| | JSEB | 1155 | 1200 | 45 | 3.9 | 1058 | 984 | -74 | -7.0 |
| | DVC | 2530 | 2695 | 165 | 6.5 | 2575 | 2718 | 143 | 5.6 |
| | Odisha | 3600 | 3650 | 50 | 1.4 | 3435 | 3658 | 223 | 6.5 |
| | West Bengal | 6909 | 7480 | 571 | 8.3 | 7104 | 7132 | 28 | 0.4 |
| | | TOTAL | 16309 | 17301 | 992 | 6.1 | 14878 | 16260 | 1382 |
| NER | Arunachal Pradesh | 105 | 115 | 10 | 9.4 | 101 | 113 | 12 | 11.9 |
| | Assam | 1124 | 1266 | 142 | 12.7 | 1098 | 1220 | 122 | 11.1 |
| | Manipur | 117 | 114 | -2 | -2.0 | 110 | 111 | 1 | 1.0 |
| | MeSEB | 263 | 278 | 15 | 5.6 | 264 | 276 | 12 | 4.5 |
| | Mizoram | 68 | 61 | -7 | -10.6 | 65 | 60 | -5 | -7.3 |
| | Nagaland | 110 | 99 | -10 | -9.4 | 109 | 99 | -11 | -9.6 |
| | Tripura | 229 | 254 | 25 | 10.9 | 228 | 250 | 22 | 9.4 |
| | | TOTAL | 2015 | 2187 | 172 | 8.5 | 1975 | 2129 | 153 |
| ALL INDIA | | 137030 | 137087 | 57 | 0.0 | 117236 | 123232 | 5996 | 5 |

11. SCHEDULE AND DRAWAL OF CONSTITUENTS - OCTOBER 2013

| REGION | STATE | SCHEDULE (MU) | ACTUAL DRAWAL (MU) | Over drawal(+)/ Under Drawal(-) (MU) | % OD/UD | SCHEDULE (MU/DAY) | ACTUAL DRAWAL (MU/DAY) | Over drawal(+)/ Under Drawal(-) (MU/DAY) |
|--------|-------------------|---------------|--------------------|--------------------------------------|---------|-------------------|------------------------|--|
| NR | Chandigarh | 124 | 129 | 4.8 | 3.9 | 4.0 | 4.2 | 0.2 |
| | Delhi | 1705 | 1719 | 13.9 | 0.8 | 55.0 | 55.5 | 0.4 |
| | Haryana | 1807 | 1775 | -32.4 | -1.8 | 58.3 | 57.2 | -1.0 |
| | H.P. | 299 | 352 | 52.7 | 17.6 | 9.7 | 11.3 | 1.7 |
| | J&K | 606 | 649 | 42.1 | 6.9 | 19.6 | 20.9 | 1.4 |
| | Punjab | 2140 | 2084 | -55.9 | -2.6 | 69.0 | 67.2 | -1.8 |
| | Rajasthan | 2391 | 2293 | -97.9 | -4.1 | 77.1 | 74.0 | -3.2 |
| | U.P. | 2703 | 2615 | -88.3 | -3.3 | 87.2 | 84.4 | -2.8 |
| | Uttarakhand | 474 | 502 | 28.1 | 5.9 | 15.3 | 16.2 | 0.9 |
| | NFF/Railway | 68 | 68 | -0.5 | -0.7 | 2.2 | 2.2 | 0.0 |
| WR | Gujarat | 1291 | 1297 | 5.6 | 0.4 | 41.7 | 41.8 | 0.2 |
| | Madhya Pradesh | 2109 | 1994 | -114.1 | -5.4 | 68.0 | 64.3 | -3.7 |
| | Maharashtra | 3269 | 3341 | 72.2 | 2.2 | 105.4 | 107.8 | 2.3 |
| | Chhattisgarh | 343 | 292 | -51.7 | -15.0 | 11.1 | 9.4 | -1.7 |
| | Goa | 221 | 234 | 13.2 | 6.0 | 7.1 | 7.5 | 0.4 |
| | D&D | 184 | 185 | 0.2 | 0.1 | 5.9 | 6.0 | 0.0 |
| | D&NH | 452 | 459 | 7.3 | 1.6 | 14.6 | 14.8 | 0.2 |
| | ESIL | 175 | 177 | 2.0 | 1.1 | 5.6 | 5.7 | 0.1 |
| SR | APTRANSCO | 2440 | 2502 | 62.0 | 2.5 | 78.7 | 80.7 | 2.0 |
| | KPTCL | 531 | 520 | -11.1 | -2.1 | 17.1 | 16.8 | -0.4 |
| | KSEB | 679 | 722 | 42.5 | 6.3 | 21.9 | 23.3 | 1.4 |
| | TNEB | 2231 | 2214 | -17.1 | -0.8 | 72.0 | 71.4 | -0.6 |
| | PONDICHERRY | 184 | 185 | 1.3 | 0.7 | 5.9 | 6.0 | 0.0 |
| | Goa(SR) | 44 | 43 | -0.8 | -1.7 | 1.4 | 1.4 | 0.0 |
| ER | Bihar | 1224 | 1202 | -21.9 | -1.8 | 39.5 | 38.8 | -0.7 |
| | JSEB | 408 | 365 | -43.3 | -10.6 | 13.2 | 11.8 | -1.4 |
| | DVC | -612 | -588 | 24.3 | -4.0 | -19.7 | -19.0 | 0.8 |
| | GRIDCO | 279 | 219 | -59.7 | -21.4 | 9.0 | 7.1 | -1.9 |
| | WBSEB | 779 | 798 | 18.9 | 2.4 | 25.1 | 25.7 | 0.6 |
| | Sikkim | 41 | 31 | -10.2 | -25.0 | 1.3 | 1.0 | -0.3 |
| NER | Arunachal Pradesh | 38 | 47 | 8.7 | 22.6 | 1.2 | 1.5 | 0.3 |
| | Assam | 408 | 416 | 8.4 | 2.1 | 13.2 | 13.4 | 0.3 |
| | Manipur | 58 | 55 | -3.4 | -5.8 | 1.9 | 1.8 | -0.1 |
| | MeSEB | 51 | 57 | 6.5 | 12.9 | 1.6 | 1.8 | 0.2 |
| | Mizoram | 30 | 35 | 5.4 | 18.3 | 1.0 | 1.1 | 0.2 |
| | Nagaland | 36 | 38 | 2.2 | 6.2 | 1.2 | 1.2 | 0.1 |
| | Tripura | 30 | 26 | -4.1 | -13.6 | 1.0 | 0.8 | -0.1 |

12. अंतर-क्षेत्रीय विद्युत विनिमय(2013-14)

Inter-Regional Exchanges (2013-2014)

सभी आंकड़े मिलियन यूनिट्स में All figures in Mus

अंतरिम आंकड़े Provisional data - subject to change

| | | Apr-13 | May-13 | Jun-13 | Jul-13 | Aug-13 | Sep-13 | Oct-13 | Total FINANCIAL YEAR 2013-14 (till Sep'13) |
|--|--|---------|---------|---------|---------|---------|---------|---------|--|
| * प.क्ष. से | एचवीडीसी विंध्याचल बैक टू बैक HVDC Vindhyachal B/B | 40.73 | 58.17 | 180.29 | 196.13 | 79.75 | 234.93 | 78.04 | 868.04 |
| उ.क्ष. | एचवीडीसी मुन्द्रा - महेन्द्रगढ़ HVDC Mundra-M'garh# | 855.76 | 969.50 | 889.97 | 888.94 | 788.77 | 818.55 | 1076.49 | 6287.98 |
| WR-NR | 220 कि.वो. औरैया - मालनपुर+ मेहगाँव 220KV Aur.-Mal.+ Mehgaon | 0.00 | 0.00 | 0.00 | 0.89 | 0.26 | 0.74 | 0.00 | 1.90 |
| | 220 कि.वो. कोटा/मोड़क - बदोद 220KV Kota/Morak-Badod | 0.00 | 0.00 | 3.31 | 8.53 | 4.73 | 13.96 | 20.99 | 51.53 |
| | 765कि.वो. आगरा - ग्वालियर दु.प. 765KV Agra-Gwalior D/C | 515.57 | 721.15 | 990.17 | 1025.26 | 790.69 | 923.43 | 833.47 | 5799.73 |
| | 400 कि.वो. जेरदा - कांकरोली 400KV Zerda - Kankroli | 0.00 | 0.00 | 1.31 | 3.16 | 0.00 | 7.62 | 4.56 | 16.65 |
| | 400 कि.वो. जेरदा - भिनमाल 400KV Zerda - Bhinmal | 0.00 | 0.00 | 2.86 | 5.40 | 0.22 | 22.63 | 28.06 | 59.16 |
| | Total WR-NR | 1412.06 | 1748.82 | 2067.91 | 2128.30 | 1664.41 | 2021.86 | 2041.61 | 13084.98 |
| * एचवीडीसी सासाराम बैक टू बैक HVDC Sasaram B/B (Bypass wef 1 DEC'08) | | 95.68 | 31.96 | 59.41 | 45.76 | 54.01 | 52.56 | 46.50 | 385.88 |
| ER-NR | 765 कि.वो. गया - फतेहपुर 765 kV Gaya - Fatehpur | 25.30 | 74.53 | 64.51 | 46.91 | 27.80 | 124.14 | 164.54 | 527.73 |
| | 765 कि.वो. सासाराम- फतेहपुर 765 kV Sasaram - Fatehpur | | | | | 83.63 | 0.00 | 0.00 | 83.63 |
| | 400 कि.वो. मुजफ्फरपुर - गोरखपुर दु.प. 400KV Mzp-Gkp D/C | 102.27 | 434.16 | 502.81 | 490.95 | 409.41 | 532.41 | 520.33 | 2992.34 |
| | 220/132 कि.वो. लाईन 220/132kV Lines | 85.99 | 109.72 | 105.98 | 110.23 | 100.33 | 106.23 | 86.27 | 704.75 |
| | 400 कि.वो. पटना - बलिया 2x दु.प. 400KV Patna-Balia 2xD/C | 213.17 | 412.30 | 448.89 | 369.45 | 274.21 | 472.54 | 356.21 | 2546.77 |
| | 400 कि.वो. पुसौली - बलिया 400kV Pusauli- Balia | 1.05 | 21.86 | 8.01 | 4.78 | 5.49 | 47.78 | 34.05 | 123.02 |
| | 400 कि.वो. बिहारशरीफ - बलिया दु.प. 400KV Biharsharif -Balia D/C | 82.16 | 211.68 | 217.12 | 221.54 | 164.94 | 367.15 | 295.96 | 1560.55 |
| | Total ER-NR | 605.62 | 1296.21 | 1406.72 | 1289.61 | 1119.84 | 1702.81 | 1503.86 | 8924.67 |
| * उ.क्ष. से प.क्ष. | एचवीडीसी विंध्याचल बैक टू बैक HVDC Vindhyachal B/B | 59.40 | 76.94 | 29.58 | 27.87 | 119.80 | 29.35 | 65.95 | 408.88 |
| NR-WR | 220 कि.वो. औरैया - मालनपुर+ मेहगाँव 220KV Aur.-Mal.+ Mehgaon | 51.34 | 34.57 | 29.67 | 34.46 | 38.02 | 39.57 | 50.34 | 277.97 |
| | 220 कि.वो. कोटा/मोड़क - बदोद 220KV Kota/Morak-Badod | 89.42 | 69.45 | 22.79 | 19.54 | 26.54 | 12.34 | 27.21 | 267.29 |
| | 765 कि.वो. आगरा - ग्वालियर दु.प. 765KV Agra-Gwalior D/C | 0.00 | 0.00 | 0.00 | 0.00 | 0.00 | 0.00 | 0.00 | 0.00 |
| | 400 कि.वो. जेरदा - कांकरोली 400KV Zerda - Kankroli | 132.00 | 119.55 | 83.03 | 50.98 | 114.31 | 52.14 | 36.41 | 588.41 |
| | 400 कि.वो. जेरदा - भिनमाल 400KV Zerda - Bhinmal | 90.16 | 84.41 | 69.87 | 41.31 | 87.11 | 33.99 | 7.15 | 414.00 |
| | Total NR-WR | 422.32 | 384.92 | 234.94 | 174.16 | 385.77 | 167.39 | 187.06 | 1956.55 |
| उ.क्ष. से प.क्ष. | 220/132 कि.वो. लाईन 220/132kV Lines | 25.40 | 23.18 | 23.18 | 23.18 | 23.64 | 23.08 | 19.60 | 161.26 |
| | 400 कि.वो. मुजफ्फरपुर - गोरखपुर दु.प. 400KV Mzp-Gkp D/C | 1.14 | 0.00 | 0.00 | 0.00 | 0.00 | 0.00 | 0.00 | 1.14 |
| NR-ER | 765 कि.वो. गया - फतेहपुर 765 kV Gaya - Fatehpur | 6.43 | 0.07 | 0.75 | 0.00 | 5.61 | 0.00 | 0.00 | 12.86 |
| | 765 कि.वो. सासाराम- फतेहपुर 765 kV Sasaram - Fatehpur | | | | | 0.86 | 0.00 | 0.00 | 0.86 |
| | एचवीडीसी सासाराम बैक टू बैक HVDC Sasaram B/B (Bypass wef 1 DEC'08) | 28.32 | 77.85 | 88.05 | 136.14 | 97.78 | 45.75 | 50.69 | 524.59 |
| | 400 कि.वो. पटना - बलिया 2x दु.प. 400KV Patna-Balia 2xD/C | 0.00 | 0.00 | 0.00 | 0.00 | 0.00 | 0.00 | 0.00 | 0.00 |
| | 400 कि.वो. पुसौली - बलिया 400kV Pusauli- Balia | 55.85 | 13.45 | 18.58 | 19.62 | 24.13 | 1.40 | 0.07 | 133.10 |
| | 400 कि.वो. बिहारशरीफ - बलिया दु.प. 400KV Biharsharif -Balia D/C | 0.00 | 0.00 | 0.00 | 0.00 | 0.00 | 0.00 | 0.00 | 0.00 |
| | Total NR-ER | 117.14 | 114.55 | 130.56 | 178.94 | 152.02 | 70.23 | 70.36 | 833.80 |
| * NR-Nepal | उत्तरी क्षेत्र - नेपाल | 18.43 | 11.30 | 11.30 | 11.30 | 5.80 | 7.33 | 1.16 | 66.62 |
| ** ER-SR | एचवीडीसी गजुवाका बैक टू बैक HVDC-Gaz. B/B | 275.20 | 365.04 | 325.98 | 427.93 | 369.32 | 322.29 | 382.50 | 2468.26 |
| | एचवीडीसी तालचर - कोलार HVDC-Talchar-Kolar | 1257.13 | 1376.83 | 1259.09 | 1294.91 | 1277.57 | 1179.02 | 1283.90 | 8928.45 |
| ** SR-ER | एचवीडीसी गजुवाका बैक टू बैक HVDC-Gaz. B/B | 0.00 | 0.00 | 0.00 | 0.00 | 0.00 | 0.00 | 0.00 | 0.00 |
| *** ER-WR | एसी लिंक्स AC links | 299.00 | 544.00 | 233.00 | 30.00 | 37.00 | 289.00 | 359.00 | 1791.00 |
| *** WR-ER | एसी लिंक्स AC links | 18.00 | 4.00 | 25.00 | 174.00 | 136.00 | 43.00 | 16.00 | 416.00 |
| *** ER-NER | एसी लिंक्स AC links | 306.00 | 93.00 | 189.00 | 128.00 | 182.00 | 145.00 | 131.00 | 1174.00 |
| *** NER-ER | एसी लिंक्स AC links | 0.00 | 32.00 | 16.00 | 12.00 | 8.00 | 8.00 | 15.00 | 91.00 |
| ** SR-WR | एचवीडीसी चंद्रपुर बैक टू बैक Chandrapur HVDC B/B | 0.00 | 0.00 | 0.00 | 0.00 | 0.00 | 0.00 | 0.00 | 0.00 |
| ** WR-SR | एचवीडीसी चंद्रपुर बैक टू बैक Chandrapur HVDC B/B | 693.89 | 699.71 | 547.42 | 641.59 | 633.41 | 588.88 | 707.00 | 4511.90 |
| | TOTAL | 5425 | 6670 | 6447 | 6491 | 5971 | 6545 | 6698 | 44247 |
| ER-SR | तालचर इंटरकनेक्टर Talchar Interconnector | 381.00 | 562.0 | 282.0 | 233.0 | 179.0 | 37.0 | 225.0 | 1899.00 |
| Net IR | तालचर II को छोड़कर (Excl. Tal.-II) | 3787 | 4732 | 4906 | 4963 | 4515 | 5329 | 5190 | 33420 |

** Data is taken from SRLDC

*** Data is taken from ERLDC # dedicated transmission line of M/s Adani Power Ltd. and not part of ISTS

13. एसटीओए (द्विपक्षीय एवं सामूहिक) एवं यू आई बिलिंग का ब्योरा – माह अक्टूबर 2013
STOA (BILATERAL AND COLLECTIVE) & UI BILLING DETAILS- OCT' 2013

द्विपक्षीय एसटीओए BILATERAL SHORT TERM OPEN ACCESS

| क्षे.भा.प्रे.के. का नाम Name of RLDC | अक्टूबर 2013 October'13 | | Apr-Oct'13 | |
|---|---|---|---|--|
| | लेन – देनों की संख्या No. of Transactions | अनुमोदित ऊर्जा (मि.यु.) Energy Approved(MU) | लेन – देनों की संख्या No. of Transactions | अनुमोदित ऊर्जा (मि.यु.) Energy Approved (MU) |
| ऊ.क्षे. NR | 324 | 1385 | 2153 | 14023 |
| प.क्षे. WR | 135 | 1296 | 891 | 5341 |
| द.क्षे. SR | 408 | 1180 | 1438 | 7958 |
| पू.क्षे. ER | 236 | 523 | 1673 | 5335 |
| पूर्वात्तर क्षे. NER | 37 | 87 | 119 | 708 |
| कुल TOTAL | 1140 | 4471 | 6274 | 33364 |

एसटीओए SHORT TERM OPEN ACCESS

| माह MONTH | सामूहिक एसटीओए STO A | | द्विपक्षीय एसटीओए Bilateral STO A | |
|---------------------|--|--|--|--|
| | क्रेताओं / विक्रेताओं की सं. NO. of Buyers/Sellers | अनुमोदित ऊर्जा (मि.यु.) Approved Energy (MU) | क्रेताओं / विक्रेताओं की सं. NO. of Buyers/Sellers | अनुमोदित ऊर्जा (मि.यु.) Approved Energy (MU) |
| अप्रैल 2013 APR'13 | 1613 | 2577 | 805 | 3505 |
| मई 2013 MAY'13 | 1666 | 2573 | 885 | 4218 |
| जून 2013 June'13 | 1779 | 2168 | 772 | 5018 |
| जुलाई 2013 July'13 | 2343 | 2358 | 900 | 6637 |
| अगस्त 2013 Aug'13 | 1955 | 2428 | 782 | 5043 |
| सितम्बर 2013 Sep'13 | 1891 | 2940 | 990 | 4472 |
| अक्टूबर 2013 Oct'13 | 2066 | 2755 | 1140 | 4471 |
| कुल TOTAL | 13313 | 17799 | 6274 | 33364 |

मासिक यु.आई. बिलिंग का ब्योरा 2013-14
MONTHLY UI BILLING DETAILS 2013-14

अनंतिम आकड़े
 provisional data subject to change

करोड़ रु. में (RS. IN CRORES)

| क्षेत्र REGION | उत्तरी क्षेत्र NORTH | पश्चिमी क्षेत्र WEST | पूर्वी क्षेत्र EAST | दक्षिणी क्षेत्र SOUTH | पूर्वोत्तर क्षेत्र NORTH EAST | अखिल भारतीय स्तर ALL INDIA |
|----------------------|----------------------|----------------------|---------------------|-----------------------|-------------------------------|----------------------------|
| (Upto 28th APR'13) | 82 | 70 | 55 | 42 | 11 | 260 |
| (Upto 26th MAY'13) | 145 | 124 | 110 | 68 | 28 | 476 |
| (Upto 30th JUNE'13) | 239 | 184 | 168 | 98 | 41 | 730 |
| (Upto 28th JULY'13) | 318 | 259 | 237 | 117 | 50 | 980 |
| (Upto 25th AUG'13) | 387 | 322 | 285 | 135 | 58 | 1187 |
| (Up to 22nd SEP'13) | 467 | 381 | 346 | 152 | 72 | 1417 |
| (Up to 20th OCT'13) | 531 | 435 | 396 | 171 | 84 | 1617 |

14. पावर मार्केट की सूचना (स्रोत : आई.ई.एक्स. एवं पी.एक्स.आई.एल.)
POWER MARKET INFORMATION (Source IEX & PXIL)
पावर एक्सचेंज के माध्यम से विनिमय – माह अक्टूबर 2013
EXCHANGES THROUGH POWER EXCHANGES -OCT' 2013

| क्र. स. S. No. | क्षेत्रीय ईकाई Regional Entity | क्षेत्र Region | पावर एक्सचेंज के माध्यम से (मि.यु. मे) Through Power Exchange in MU | |
|----------------|---|--------------------|---|---------------|
| | | | विक्रय Sale | क्रय Purchase |
| 1 | पंजाब Punjab | उत्तरी क्षेत्र NR | 0.00 | 358.99 |
| 2 | हरियाणा Haryana | | 61.25 | 174.12 |
| 3 | राजस्थान Rajasthan | | 36.44 | 263.75 |
| 4 | दिल्ली Delhi | | 307.30 | 11.47 |
| 5 | उत्तर प्रदेश Uttar Pradesh | | 0.00 | 333.72 |
| 6 | उत्तराखंड Uttarakhand | | 16.96 | 69.73 |
| 7 | हिमाचल प्रदेश Himachal Pradesh | | 73.03 | 31.60 |
| 8 | जम्मू और कश्मीर J & K | | 19.40 | 73.60 |
| 9 | केंद्र शासित चंडीगढ़ UT Chandigarh | | 6.49 | 1.76 |
| 10 | ए डी हाइड्रो AD Hydro | | 12.03 | 0.00 |
| 11 | करचम वांगतू KW | | 204.65 | 0.00 |
| 12 | श्री सीमेंट Shree Cement | | 34.36 | 0.00 |
| 13 | नाथपा झाकरी Nathpa Jhakri | | 12.57 | 0.00 |
| 14 | बैरासूल Baira Siul HEP(BS0) | | 0.00 | 0.00 |
| 15 | चमेरा -1 Chamera-I HEP(CM1) | | 0.00 | 0.00 |
| 16 | चमेरा -2 Chamera-II HEP(CM2) | | 0.00 | 0.00 |
| 17 | धौलीगंगा Dhauliganga HEP(DG0) | | 0.00 | 0.00 |
| 18 | धौलीगंगा Dulahasti HEP(DU0) | | 0.00 | 0.00 |
| 19 | सलाल Salal HEP(SL0) | | 0.00 | 0.00 |
| 20 | सेवा -2 Sewa-II NHPC(SW2) | | 0.00 | 0.00 |
| 21 | टनकपुर Tanakpur HEP(TP0) | | 0.00 | 0.00 |
| 22 | उरी Uri HEP(UR0) | | 0.00 | 0.00 |
| 23 | लांको बुधिल LANCO Budhil | | 13.44 | 0.00 |
| 24 | चमेरा-3 chamera 3 | | 0.00 | 0.00 |
| 25 | अदानी एचवीडीसी ADANI HVDC(NORGU0) | | 0.00 | 0.00 |
| 26 | मध्य प्रदेश MP | पश्चिमी क्षेत्र WR | 448.38 | 48.53 |
| 27 | महाराष्ट्र Maharashtra | | 16.75 | 217.14 |
| 28 | गुजरात Gujarat | | 382.44 | 645.43 |
| 29 | छत्तीसगढ़ Chattisgarh | | 205.08 | 0.00 |
| 30 | गोवा Goa | | 0.00 | 0.00 |
| 31 | दमन और दीव Daman and Diu | | 0.00 | 23.24 |
| 32 | दादरा और नगर हवेली Dadra & Nagar Haveli | | 0.00 | 0.00 |
| 33 | जिंदल JD | | 31.65 | 0.00 |
| 34 | लांको अमरकंटक LANCO AMK | | 0.00 | 0.00 |
| 35 | आर्यन कोल ACB India Limited | | 11.82 | 0.00 |
| 36 | जिंदल स्टील एंड पावर Jindal Steel and Power Ltd | | 29.71 | 0.00 |
| 37 | बालको -2 Balco-II | | 7.80 | 0.00 |
| 38 | स्टरलाइट Sterlite(w3rse0) | | 141.38 | 0.00 |
| 39 | एमको EMCO | | 29.97 | 0.00 |
| 40 | वन्दना विद्युत VANDANA VIDYUT | | 0.00 | 0.00 |
| 41 | एस्सार पावर ESSAR POWER | | 32.43 | 0.00 |
| 42 | एस्सार स्टील ESSAR STEEL | | 0.00 | 39.78 |
| 43 | के एस के महानदी KSK Mahanadi | | 20.50 | 0.00 |

14. पावर मार्केट की सूचना (स्रोत : आई.ई.एक्स. एवं पी.एक्स.आई.एल.)
POWER MARKET INFORMATION (Source IEX & PXIL)
 पावर एक्सचेंज के माध्यम से विनिमय – माह अक्टूबर 2013
EXCHANGES THROUGH POWER EXCHANGES -OCT' 2013

| क्र. स. S. No. | क्षेत्रीय ईकाई Regional Entity | क्षेत्र Region | पावर एक्सचेंज के माध्यम से (मि.यु. मे) Through Power Exchange in MU | | |
|----------------|---------------------------------------|------------------------|---|---------------|-------|
| | | | विक्रय Sale | क्रय Purchase | |
| 44 | आंध्र प्रदेश Andhra Pradesh | दक्षिणी क्षेत्र SR | 27.74 | 258.03 | |
| 45 | कर्नाटक Karnataka | | 84.47 | 25.63 | |
| 46 | केरल Kerala | | 15.54 | 4.54 | |
| 47 | तमिलनाडु Tamilnadu | | 0.00 | 46.25 | |
| 48 | पॉण्डिचेरी Pondicherry | | 0.00 | 0.00 | |
| 49 | गोवा Goa | | 0.00 | 0.00 | |
| 50 | लांको कोंडापल्ली LANCO_KONDPLY | | 0.00 | 0.00 | |
| 51 | सिमापुरी SIMHAPURI | | 19.97 | 0.00 | |
| 52 | मीनाक्षी MINAXI | | 0.70 | 0.00 | |
| 53 | पश्चिम बंगाल West Bengal | | पूर्वी क्षेत्र ER | 147.39 | 6.48 |
| 54 | उड़ीशा Odisha | 146.80 | | 5.07 | |
| 55 | बिहार Bihar | 0.00 | | 87.52 | |
| 56 | झारखंड Jharkhand | 0.00 | | 0.00 | |
| 57 | सिक्किम Sikkim | 12.47 | | 0.00 | |
| 58 | दामोदर घाटी परियोजना DVC | 14.79 | | 0.00 | |
| 59 | स्टरलाइट STERLITE | 0.00 | | 0.00 | |
| 60 | मैथन पावर लिमिटेड Maithon Power Ltd | 29.52 | | 0.00 | |
| 61 | आधुनिक पावर लिमिटेड Adhunik Power Ltd | 46.00 | | 0.00 | |
| 62 | Chuzachen | 16.34 | | 0.00 | |
| 63 | अरुणाचल प्रदेश Arunachal Pradesh | पूर्वोत्तर क्षेत्र NER | | 1.77 | 1.05 |
| 64 | असम Assam | | | 13.00 | 20.61 |
| 65 | मणिपुर Manipur | | | 0.00 | 0.00 |
| 66 | मेघालय Meghalaya | | | 6.99 | 5.46 |
| 67 | मिज़ोरम Mizoram | | 1.33 | 0.00 | |
| 68 | नागालैंड Nagaland | | 2.44 | 0.00 | |
| 69 | त्रिपुरा Tripura | | 1 | 1.16 | |
| 70 | अगरतला जीटीपीपी Agartala GTPP_AG0 | | 1 | 0.00 | |
| 71 | कोपिली KOPI LI_KP1 | | 0 | 0.00 | |
| 72 | असम जीबीपीपी Assam GBPP_KT0 | | 4 | 0.00 | |
| 73 | लोकटक LOKTAK | | 0 | 0.00 | |
| 74 | Ranganadi | | 6 | 0.00 | |
| कुल Total | | | 2755 | 2755 | |

15. RENEWABLE ENERGY CERTIFICATE MECHANISM

MONTH:-October 2013

RE Source & Unit wise break up (October,13)

| Sr.No | Source Wise | Accreditation | | Registration | |
|-------|--------------------------|---------------|-----------|---------------|-----------|
| | | Capacity (MW) | Unit | Capacity (MW) | Unit |
| 1 | Wind | 39.91 | 16 | 4.5 | 1 |
| 2 | Urban or Municipal Waste | 0 | 0 | 8 | 1 |
| 3 | Solar Thermal | 0 | 0 | 0 | 0 |
| 4 | Solar PV | 91.29 | 47 | 20.35 | 15 |
| 5 | Small Hydro | 4.5 | 1 | 10 | 1 |
| 6 | Others | 0 | 0 | 0 | 0 |
| 7 | Geothermal | 0 | 0 | 0 | 0 |
| 8 | Biomass | 20 | 2 | 0 | 0 |
| 9 | Bio-fuel cogeneration | 7.8 | 2 | 2.67 | 1 |
| | Total | 163.5 | 68 | 45.52 | 19 |

RECs Issued (October,13)

| Sr.No. | Non Solar | Solar | Total |
|--------|-----------|-------|--------|
| 1 | 490425 | 20783 | 511208 |

Redemption of REC (October,13)

| Sr.No. | Non Solar | Solar | Total |
|--------|-----------|-------|--------|
| 1 | 150640 | 9257 | 159897 |

15. RENEWABLE ENERGY CERTIFICATE MECHANISM

MONTH:-October 2013

RE Source & Unit wise break up (Apr,13-Oct,13)

| Sr.No | Source Wise | Accreditation | | Registration | |
|-------|--------------------------|---------------|------------|---------------|------------|
| | | Capacity (MW) | Unit | Capacity (MW) | Unit |
| 1 | Wind | 169.99 | 40 | 203.63 | 33 |
| 2 | Urban or Municipal Waste | 0 | 0 | 8 | 1 |
| 3 | Solar Thermal | 0 | 0 | 0 | 0 |
| 4 | Solar PV | 206.97 | 110 | 138.12 | 76 |
| 5 | Small Hydro | 39.5 | 4 | 20 | 2 |
| 6 | Others | 0 | 0 | 0 | 0 |
| 7 | Geothermal | 0 | 0 | 0 | 0 |
| 8 | Biomass | 71 | 5 | 47.5 | 4 |
| 9 | Bio-fuel cogeneration | 17.8 | 5 | 19.67 | 6 |
| | Total | 505.25 | 164 | 436.92 | 122 |

RECs Issued (Apr,13-Oct,13)

| Sr.No. | Non Solar | Solar | Total |
|--------|-----------|-------|---------|
| 1 | 2855231 | 84047 | 2939278 |

Redemption of REC (Apr,13-Oct,13)

| Sr.No. | Non Solar | Solar | Total |
|--------|-----------|-------|--------|
| 1 | 572675 | 25756 | 598431 |

15. RENEWABLE ENERGY CERTIFICATE MECHANISM

MONTH:-October 2013

RE Source & Unit wise break up Since Inception to Oct,13

| Sr.No | Source Wise | Accreditation | | Registration | |
|-------|--------------------------|----------------|------------|---------------|------------|
| | | Capacity (MW) | Unit | Capacity (MW) | Unit |
| 1 | Wind | 2297.29 | 583 | 2111.34 | 539 |
| 2 | Urban or Municipal Waste | 16 | 2 | 8 | 1 |
| 3 | Solar Thermal | 3 | 1 | 0 | 0 |
| 4 | Solar PV | 288.82 | 140 | 200.03 | 96 |
| 5 | Small Hydro | 247.5 | 28 | 207.5 | 24 |
| 6 | Others | 1.67 | 1 | 1.67 | 1 |
| 7 | Geothermal | 0 | 0 | 0 | 0 |
| 8 | Biomass | 659.9 | 67 | 610.4 | 62 |
| 9 | Bio-fuel cogeneration | 777.67 | 80 | 674.97 | 73 |
| | Total | 4291.84 | 902 | 3813.9 | 796 |

RECs Issued since Inception to Oct,13

| Sr.No. | Non Solar | Solar | Total |
|--------|-----------|-------|---------|
| 1 | 8223026 | 98693 | 8321719 |

Redemption of REC since Inception to Oct,13

| Sr.No. | Non Solar | Solar | Total |
|--------|-----------|-------|---------|
| 1 | 3725925 | 39769 | 3765694 |

REC Closing balance as on 31.10.2013

| Sr.No. | Non Solar | Solar | Total |
|--------|-----------|-------|---------|
| 1 | 4497101 | 58924 | 4556025 |

16. Important Events/ Disturbances October 2013

| A | B | | C | D | E | F | G | H | | I |
|-------|----------|----------|--------|--|----------------|--|---|----------|----------|------------------------------------|
| S.NO. | Outage | | Region | Name of Element | Owner / Agency | Event | Generation/Load Loss | Revival | | Category as per CEA Grid Standards |
| | Date | Time | | | | | | Date | Time | |
| 1 | 04.10.13 | 0037 hrs | NR | 1) 220 kV RSD-Sarna T/C 2) 220 kV Dasuya(PSEB)-Sarna(PSEB) D/C 3) 220 kV Kishenpur(PG)-Sarna(PSEB) D/C 4) 220 kV Sarna(PSEB)-Udhampur(JK) 5) 220 kV Sarna-Wadala Granthian T/C 6) 220 kV Sarna-Tibber 7) 220 kV Heeranagar(JK)-Sarna(PSEB) | PG/PSEB | Due to lightening and bad weather lines given in Column D tripped. | Load Loss=60 MW | 04.10.13 | 0155 hrs | GD-I |
| 2 | 04.10.13 | 1456 hrs | SR | 1) All 220 kV lines from VTPS 2) VTPS Unit-2,3,4,5,6(210 MW each) | APTRANSCO | Due to B-Phase CT failure of 220 kV VTPS-Narsaraopeta at VSTPS elements given in column D tripped. | Gen. Loss=900 MW | 06.10.13 | | GD-I |
| 3 | 05.10.13 | 1045 hrs | NR | 1) 220 kV Meerut-Modipuram D/C 2) 220 kV Modipuram-Shatabdinagar 3) 220 kV Modipuram-Muzzafarnagar 4) 220 kV Modipuram-Muradnagar | UP | Due to sparking of isolator of 220 kV Meerut-Modipuram-II all 220 kV lines at 220 kV Modipuram S/S tripped. | Load Loss=150 MW | 05.10.13 | 1200 hrs | GD-I |
| 4 | 05.10.13 | 1740 hrs | ER | 1) 220 kV Mendhasal-Chandaka-I,II,III,IV | GRIDCO | Due to R-N fault in 220 kV Mendhasal-Chandaka-I,all the elements given in Column D tripped. | Load Loss=150 MW | 05.10.13 | 1805 hrs | GD-I |
| 5 | 08.10.13 | 0910 hrs | ER | 1) 220 kV Ramchandrapur-Chandil 2) 220 kV Santaldih-Chandil 3) 220 kV Ranchi-Chandil 4) 132 kV Hatia-Chandil 5) 100 MVA ICT-I,II,III at Chandil | JSEB | Due to bursting of 220 kV side R-Phase Lightening Arrester of 100 MVA ICT-III at Chandil S/S elements given in Column D tripped. | Load Loss=150 MW | 08.10.13 | 1054 hrs | GD-I |
| 6 | 09.10.13 | 1626 hrs | ER | 1) CESC System 2) Unit-3 of Budge Budge(250 MW) | WBSETCL/CESC | Due to Bus differential protection operation at 132 kV Bus of EM Bypass S/S of CESC, CESC system got separated from NEW grid. | Load Loss=200 MW Generation Loss= 220 MW | 09.10.13 | 1700 hrs | GD-I |
| 7 | 10.10.13 | 1108 hrs | ER | 1) 220 kV Bus Tie 2) 220 kV Chandrapur-Kalyaneswari-I 3) 220 kV Kalyaneswari-Mejia TPS D/C 4) 220 kV Kalyaneswari-Maithon(PG)-I 5) 150 MVA Kalyaneswari Autotransformer | DVC | Due to bus fault occurred in 220 kV Main Bus-I at Kalyaneswari S/S due to which all the 220 kV lines & ATRs connected to the said bus tripped. | Load Loss=335 MW | 10.10.13 | 1230 hrs | GD-I |

16. Important Events/ Disturbances October 2013

| A | B | | C | D | E | F | G | H | | I |
|-------|----------|----------|--------|--|----------------|--|---------------------------------------|----------|----------|------------------------------------|
| S.NO. | Outage | | Region | Name of Element | Owner / Agency | Event | Generation/Load Loss | Revival | | Category as per CEA Grid Standards |
| | Date | Time | | | | | | Date | Time | |
| 8 | 10.10.13 | 1511 hrs | NR | 1) 400 kV Abdullapur-Karcham Wangatoo D/C 2) 400 kV Karcham Wangtoo-Jhakri 3) Karcham Wangatoo Unit-I & II (250 MW each) | JPL | Due to tripping of lines on B-N fault generating units of K.Wangtoo tripped. | Generation Loss= 400 MW | 10.10.13 | 1536 hrs | GD-I |
| 9 | 11.10.13 | 2055 hrs | ER | 1) 220 kV Ramchandrapur-Chandil 2) 220 kV Santaldih-Chandil 3) 220 kV Ranchi-Chandil 4) 132 kV Hatia-Chandil | JSEB | Due to jumper snapping between CB & CT of 220 kV Ramchandrapur-Chandil Bay at Chandil S/S elements given in Column D tripped. | Load Loss=160 MW | 11.10.13 | 2235 hrs | GD-I |
| 10 | 12.10.13 | 2359 hrs | ER/SR | Talcher-Kolar HVDC Bipole | PG/NTPC | Due to line fault at cyclone area, both the poles of Tacher-Kolar HVDC Bipole tripped. | Load Loss=500 MW(approx) | 13.10.13 | 0106 hrs | GD-I |
| 11 | 16.10.13 | 1107 hrs | WR | 1) 220 kV Amarkantak-Annupur-I 2) 220 kV Amarkantak-JBL-I 3) 220 kV Amarkantak-Sukha S/C 4) 220 kV Amarkantak-Sidhi S/C 5) Amarkantak Unit-III(120 MW) & V(210 MW) | MPSEB | Due to BusBar protection operation at 220 kV Amarkantak the lines given in Column D tripped and which led to the tripping of units on loss of evacuation path. | Gen. Loss=240 MW | 16.10.13 | 1211 hrs | GD-I |
| 12 | 18.10.13 | 1232 hrs | NR | 1) 220 kV Lehra Mohabbat-Barnala 2) Lehra Mohabbat Unit-III & IV(250 MW each) | PSEB | Due to Y-Phase CT blast of 220 kV Lehra Mohabbat-Barnala line, generation tripped on loss of evacuation. | Gen. Loss=300 MW | 18.10.13 | 1623 hrs | GD-I |
| 13 | 22.10.13 | 1003 hrs | WR | 1) 220 kV Korba(E)-Budhipadar-D/C 2) 220 kV Korba(E)-Raigarh | CSEB | Due to heavy sparking occurring in 220 kV/6.6 kV station transformer isolator at Korba(East) S/S of CSEB, consequently running units in Korba(East) tripped. | Gen. Loss=160 MW | 22.10.13 | | GD-I |
| 14 | 26.10.13 | 1805 hrs | ER | 1) 150 MVA & 100 MVA, 220/132 KV Auto Transformers. 2) 220 kv Jaypore-Jaynagar D/C 3) 220 kv Jaynagar -Therubali D/C 4) 220 kv Jaynagar-Balimela T/C 5) 220 kv Jaynagar-UKolab D/C. 6) Balimela HEP 7) Upper Kolab HEP | GRIDCO | Due to BusBar protection operation all 220 KV feeders emanating from Jaynagar S/S tripped which led to the tripping of all running units of BALIMELA & UPPER KOLAB HEP tripped due to loss of evacuation paths | Gen. Loss= 450 MW Load Loss= 80 MW | 26.10.13 | 1853 hrs | GD-I |

16. Important Events/ Disturbances October 2013

| A | B | | C | D | E | F | G | H | | I |
|-------|----------|----------|--------|--|----------------|---|----------------------|----------|----------|------------------------------------|
| S.NO. | Outage | | Region | Name of Element | Owner / Agency | Event | Generation/Load Loss | Revival | | Category as per CEA Grid Standards |
| | Date | Time | | | | | | Date | Time | |
| 15 | 27.10.13 | 1051 hrs | WR | 1) 500 kV HVDC Pole-I 2) 400 kV Chandrapur-Chandrapur HVDC Pole-I 3) 400 kV Chandrapur-Bhadrawati-I & III 4) 400 kV Chandrapur-Chandrapur-II 5) 400 kV Chandrapur-Kaparkheda 6) 400 kV Chandrapur II-parli 7) 400 kV Chandrapur-Parli-II 8) Chandrapur Unit-3(210 MW) & Unit 6(500 MW) 9) ICT-II of 400/220 kV at Chandrapur | MSEB/NTPC | During taking out of unit 7, GT 7 Circuit breaker did not open leading to LBB operation of 400 kV Chandrapur Bus 1. This has resulted in tripping of all the elements on Bus 1 of Chandrapur. LBB protection resulted in tripping of 400 kV Chandrapur Chandrapur II line which led to overloading of 400 kV Chandrapur II- Parli resulting in tripping on over current protection. This has lead to zero power at Chandrapur II with only incoming feeder i.e. 400 kV Warora-Chandrapur II. This has led to increase in loading of Wardha flow-gate resulting in SPS operation and 84 MW backing down at Tirora. | Gen. Loss= 490 MW | 27.10.13 | 1238 hrs | GD-I |
| 16 | 29.10.13 | 0506 hrs | ER | 1) 220/132 kV, 160 MVA ICT-I at Jeerat 2) 400/220 kV, 315 MVA ICT-II at Jeerat | WBSETCL | B phase CT of 160MVA ,220/132 kV Transformer-I failed at 400/220/132 Kv JEERAT SS(WBSETCL) resulting to fire hazard. Fire extinguished immediately. 315 MVA, ,400/220 KV ICT-II also tripped on differential protection inter - tripping with 132 kV load of Bongaon and Ashoknagar/Basirhat | Load Loss=85 MW | 29.10.13 | 0530 hrs | GD-I |

17. NEW ELEMENTS in OCTOBER-2013

| A) COMMISSIONING OF NEW GENERATING UNITS | | | | | | | |
|---|--------|---------------------|-------------------------------------|----------|-----------------|----------|------|
| REGION | SL.NO. | CONSTITUENT | UNIT NAME | UNIT NO | CAPACITY (MW) | DATE | TIME |
| WR | 1 | IPP in Chhattisgarh | Korba West Power Ltd | 1 | 600 | 08.10.13 | 0815 |
| SR | 2 | NPCIL | Kundalkulam | 1 | 1000 | 25.10.13 | 2143 |
| B) COMMISSIONING OF NEW TRANSMISSION LINES | | | | | | | |
| REGION | SL.NO. | CONSTITUENT | LINE NAME | CKT NO | KV | DATE | TIME |
| NR | 1 | PGCIL | AGRA - FATEHPUR | II | 765 | 01.10.13 | 2019 |
| WR | 2 | PGCIL | Kotra(Raigarh) - Tamnar Pooling Stn | II | 765 | 31.10.13 | 2155 |
| | 3 | Torrent Power Ltd | DGEN - Navsari | I | 400 | 31.10.13 | 1109 |
| | 4 | Torrent Power Ltd | DGEN - Navsari | II | 400 | 31.10.13 | 1145 |
| C) COMMISSIONING OF NEW ICTS | | | | | | | |
| REGION | SL.NO. | CONSTITUENT | STATION NAME | KV RATIO | CAPACITY (MVA) | DATE | TIME |
| ER | 1 | DVC | Koderma | 400/220 | 315 | 09.10.13 | 1607 |
| NR | 2 | RVPN | Didwana | 400/220 | 315 | 11.10.13 | 2215 |
| | 3 | PGCIL | Abdullapur | 400/220 | 500 | 24.10.13 | 2359 |
| WR | 4 | PGCIL | Kotra (Raigarh) | 765/400 | 1500 | 31.10.13 | 2345 |
| | 5 | PGCIL | Tamnar | 765/400 | 1500 | 31.10.13 | 2241 |
| | 6 | PGCIL | Mapusa | 400/220 | 315 | 31.10.13 | 1845 |
| D)COMMISSIONING OF BUS REACTORS | | | | | | | |
| REGION | SL.NO. | CONSTITUENT | STATION NAME | KV | CAPACITY (MVAR) | DATE | TIME |
| NR | 1 | RVPN | Didwana | 400 | 50 | 11.10.13 | 2045 |
| WR | 2 | Torrent Power Ltd | DGEN | 400 | 125 | 31.10.13 | 1322 |
| | 3 | PGCIL | Angul | 400 | 125 | 31.10.13 | 2255 |

18.विद्युत विभव रूपरेखा माह –अक्टूबर 2013
VOLTAGE PROFILE - OCTOBER 2013

| क्र.स. Sl. No. | क्षेत्र REGION | उपकेंद्र SUBSTATION | VOLTAGE < V(lower)* (V=122,380,728 kV) | V(lower) < VOLTAGE < V(upper)* | VOLTAGE > V(upper)* (V=145, 420, 800 kV) | उच्चतम (कि.वो.) Maximum (kV) | निम्नतम (कि.वो.) Minimum (kV) | औसत (कि.वो.) Average (kV) |
|----------------------|---------------------------|-----------------------------|---|--------------------------------------|---|---------------------------------------|--|------------------------------------|
| 1 | पूर्वी क्षेत्र ER | फरक्का FARAKKA | 0% | 97% | 3% | 424 | 396 | 410 |
| 2 | | कहलगांव KAHALGAON | 0% | 68% | 32% | 432 | 399 | 417 |
| 3 | | तालचर TALCHER | 0% | 92% | 8% | 431 | 376 | 408 |
| 4 | | पुर्णिया PURNEA | 0% | 99% | 1% | 430 | 405 | 407 |
| 5 | | मुजफ्फरपुर MUZAFFARPUR | 0% | 80% | 0% | 428 | 397 | 411 |
| 6 | | जमशेदपुर JAMSHEDPUR | 0% | 73% | 27% | 436 | 421 | 429 |
| 7 | | रेंगाली RENGALI | 0% | 75% | 25% | 434 | 401 | 416 |
| 8 | | जेयपुर JEYPORE | 0% | 36% | 64% | 430 | 399 | 413 |
| 1 | उत्तरी क्षेत्र NR | नल्लागढ़ NALLAGARH | 0% | 73% | 27% | 431 | 401 | 416 |
| 2 | | भिवाड़ी BHIWADI | 0% | 54% | 46% | 434 | 402 | 419 |
| 3 | | बल्लभगढ़ BALLABGARH | 0% | 61% | 39% | 434 | 404 | 418 |
| 4 | | इलाहाबाद ALLAHABAD | 0% | 67% | 33% | 429 | 405 | 418 |
| 5 | | हिसार HISSAR | 0% | 100% | 0% | 422 | 392 | 407 |
| 6 | | बवाना BAWANA | 0% | 76% | 24% | 430 | 401 | 416 |
| 7 | | कानपुर KANPUR | 0% | 97% | 3% | 424 | 397 | 412 |
| 8 | | बस्सी BASSI | 0% | 66% | 34% | 433 | 393 | 416 |
| 9 | | लखनऊ LUCKNOW 765 kV | 0% | 100% | 0% | 773 | 732 | 739 |
| 10 | | मोगा MOGA | 0% | 97% | 3% | 424 | 396 | 410 |
| 11 | | रतनगढ़ RATANGARH | 0% | 100% | 0% | 422 | 397 | 411 |
| 1 | पश्चिमी क्षेत्र WR | आसोज ASOJ | 0% | 100% | 0% | 419 | 396 | 409 |
| 2 | | इटारसी ITARSI | 0% | 81% | 19% | 426 | 387 | 415 |
| 3 | | जेतपुर JETPUR | 0% | 100% | 0% | 421 | 398 | 409 |
| 4 | | कासोर KASOR | 0% | 100% | 0% | 420 | 400 | 412 |
| 5 | | कोल्हापुर KOLHAPUR | 0% | 1% | 99% | 435 | 411 | 428 |
| 6 | | बीना BINA | 0% | 100% | 0% | 421 | 385 | 410 |
| 7 | | ग्वालियर GWALIOR | 0% | 88% | 0% | 418 | 384 | 406 |
| 8 | | रायपुर RAIPUR | 0% | 11% | 88% | 433 | 413 | 421 |
| 9 | | जबलपुर JABALPUR | 0% | 48% | 49% | 431 | 396 | 409 |
| 10 | | धुले DHULE | 0% | 57% | 42% | 438 | 396 | 418 |
| 1 | दक्षिणी क्षेत्र SR | श्रीपेरुपुडूर SRIPERUMPUDUR | 0% | 100% | 0% | 418 | 392 | 399 |
| 2 | | नेवेली NEVELI | 0% | 69% | 27% | 428 | 403 | 402 |
| 3 | | सेलम SALEM | 0% | 100% | 0% | 418 | 388 | 402 |
| 4 | | बंगलूरु BANGALORE | 0% | 100% | 0% | 420 | 380 | 400 |
| 5 | | होसूर HOSUR | 0% | 100% | 0% | 414 | 382 | 396 |
| 6 | | रामागुंडम RAMAGUNDAM | 0% | 100% | 0% | 425 | 404 | 414 |
| 7 | | विजयवाड़ा VIJAYAWADA | 0% | 100% | 0% | 436 | 410 | 424 |
| 8 | | तिरुवनंतपुरम TIRIVANDRUM | 0% | 100% | 0% | 430 | 398 | 412 |
| 9 | | हैदराबाद HYDERABAD | 0% | 100% | 0% | 434 | 406 | 419 |
| 1 | पूर्वोत्तर क्षेत्र NER | मिसा MISA | 0% | 100% | 0% | 417 | 393 | 406 |
| 2 | | बलिपारा BALIPARA | 0% | 100% | 0% | 414 | 388 | 403 |
| 3 | | बोंगाईगांव BONGAIGAON | 0% | 100% | 0% | 413 | 390 | 400 |
| 4 | | हाफ्लोंग HAFLONG 132 kV | 0% | 100% | 0% | 137 | 128 | 134 |
| 5 | | आइज़ोल AIZWAL 132 kV | 1% | 99% | 0% | 135 | 114 | 130 |
| 6 | | कुमारघाट KUMARGHAT 132 kV | 0% | 100% | 0% | 134 | 125 | 131 |
| 7 | | इम्फाल IMPHAL 132 kV | 0% | 100% | 0% | 142 | 120 | 132 |
| 8 | | खलेरियट Khlieriat PG 132 kV | 0% | 100% | 0% | 137 | 127 | 134 |

*Percentage is calculated w.r.t. Time of one month.



POWER SYSTEM OPERATION CORPORATION LIMITED

पावर सिस्टम ऑपरेशन कारपोरेशन लिमिटेड

NATIONAL LOAD DESPATCH CENTRE - राष्ट्रीय भार प्रेषण केन्द्र

POWERGRID, B-9, Qutab Institutional Area,
Katwaria Sarai, New Delhi-110016.