

पावर सिस्टम ऑपरेशन कॉरपोरेशन लिमिटेड

(पावरग्रिड की पूर्ण स्वामित्व प्राप्त सहायक कंपनी)

POWER SYSTEM OPERATION CORPORATION LIMITED

(A wholly owned subsidiary of POWERGRID)



पंजीकृत एवं केन्द्रीय कार्यालय: बी-9, प्रथम तल, कुतुब इंस्टीट्यूशनल एरिया, कटवारिया सराय, नई दिल्ली-110 016
Registered & Corporate Office : B - 9, 1st Floor, Qutub Institutional Area, Katwaria Sarai, New Delhi - 110 016
Website : www.posoco.in, www.nldc.in, Tel: 011-26536832, 26524522, Fax: 011-26524525, 26536901

संदर्भ संख्या:-POSOCO/NLDC/GM/

दिनांक: 21.11.2014

सेवा में,

वितरण सूची के अनुसार

विषय:- निष्पादन रिपोर्ट - अक्टूबर 2014

महोदय,

आई०ई०जी०सी०-2010 के प्रावधान के अनुसार, - अक्टूबर 2014 माह की अखिल भारतीय प्रणाली की निष्पादन रिपोर्ट संलग्न है ।

धन्यवाद

भवदीय

एन नल्लारसन
21/11/14
एन नल्लारसन
(उप महाप्रबंधक)
(रा०भा०प्रे०के०)

संलग्नक: मासिक प्रणाली रिपोर्ट



POWER SYSTEM OPERATION CORPORATION LIMITED

(A wholly owned subsidiary of POWERGRID)

पाँवर सिस्टम ऑपरेशन कारपोरेशन लिमिटेड

NATIONAL LOAD DESPATCH CENTRE –राष्ट्रीय भार प्रेषण केन्द्र

मासिक ऑपरेशन रिपोर्ट

Monthly
Operation Report



अक्तूबर 2014

पावर सिस्टम ऑपरेशन कार्पोरेशन
राष्ट्रीय भार पारेषण केंद्र , नई दिल्ली

POWER SYSTEM OPERATION CORPORATION LTD
NATIONAL LOAD DESPATCH CENTRE, NEW DELHI



माह अक्टूबर 2014 की मासिक परिचालन निष्पादन रिपोर्ट
OPERATIONAL PERFORMANCE REPORT FOR THE
MONTH OF OCTOBER 2014

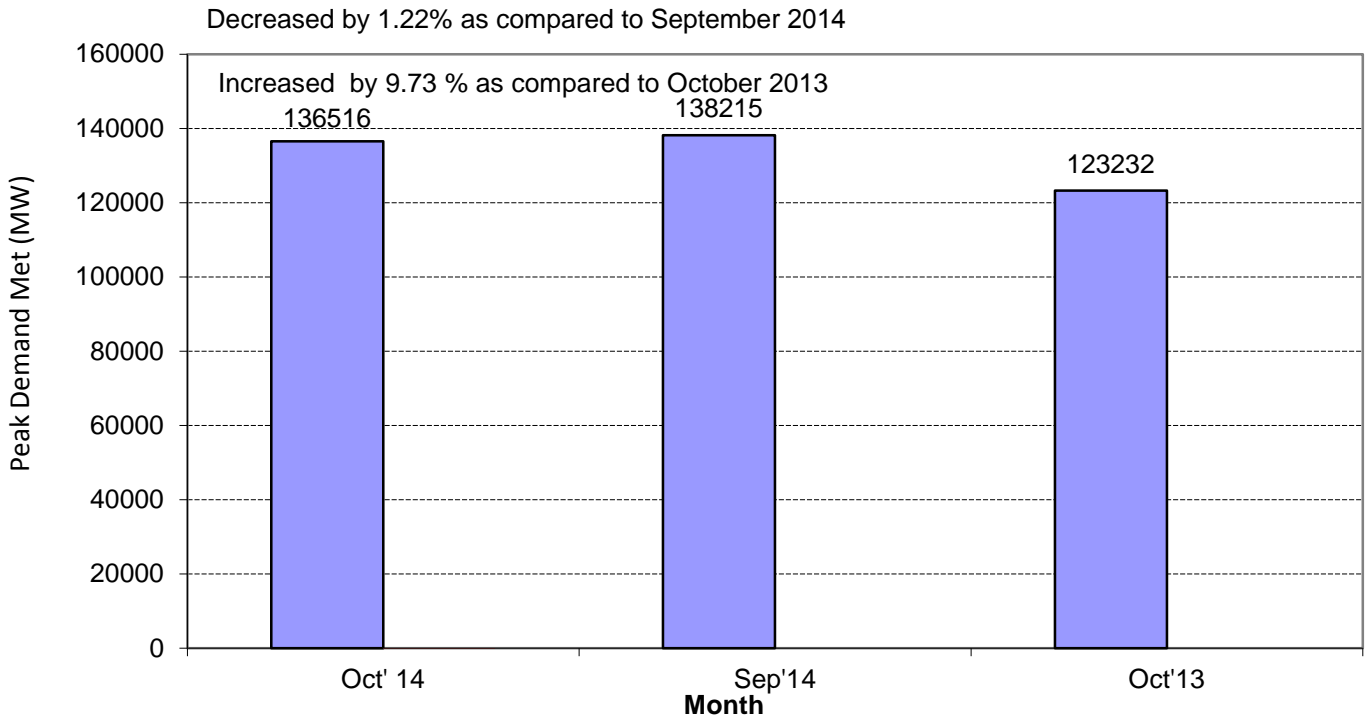
पृष्ठ सूची CONTENTS

1. माह अक्टूबर 2014 की सारांश रिपोटर SUMMARY OF REPORT FOR THE MONTH OF OCTOBER 2014	1-4
2. क्षेत्रवार स्थापित विद्युत क्षमता REGION WISE INSTALLED CAPACITY	5
3. राष्ट्र स्तर पर सांध्यकालीन शिखर मांग पूर्ति PEAK DEMAND MET AT NATIONAL LEVEL	6-8
4. राष्ट्र स्तर पर विद्युत ऊर्जा खपत ENERGY CONSUMPTION AT NATIONAL LEVEL	9-10
5. फ्रिक्वेन्सी रूपरेखा FREQUENCY PROFILE	11-15
6. राष्ट्र स्तर पर जल विद्युत उत्पादन HYDRO GENERATION AT NATIONAL LEVEL	16-17
7. राष्ट्र स्तर पर पवन विद्युत ऊर्जा उत्पादन WIND GENERATION AT NATIONAL LEVEL	18
8. ऊर्जा आपूर्ति की वास्तविक स्थिति ACTUAL POWER SUPPLY POSITION	19
9. शिखर मांग आवश्यकता एवं आपूर्ति की पिछले वर्ष अक्टूबर माह से तुलना ENERGY REQUIREMENT & MET COMPARISON WITH OCT 2013	20
10. ऊर्जा आवश्यकता इवान आपूर्ति की पिछले वर्ष अक्टूबर माह से तुलना PEAK DEMAND REQUIREMENT & MET COMPARISON WITH OCT '2013	21
11. शेड्यूल एवं ड्रावल पिछले वर्ष से तुलना SCHEDULE & DRAWAL AT REGIONAL LEVEL	22
12. अंतर क्षेत्रीय विनिमय INTER-REGIONAL EXCHANGES	23-28
13. अंतर राष्ट्रीय विनिमय INTER-NATIONAL EXCHANGES	29
14. एसटीओए (द्विपक्षीय एवं सामूहिक) एवं यू ई का ब्योरा BILATERAL & COLLECTIVE SHORT-TERM OPEN ACCESS & UI DETAILS	30
15. पावर मार्केट की सूचना POWER MARKET INFORMATION	31-32

16. अक्षय ऊर्जा प्रमाण पत्र प्रक्रिया RENEWABLE ENERGY CERTIFICATE MECHANISM	33-35
17. मुख्य घटनाएँ एवं डिस्टर्बेंस IMPORTANT EVENTS/DISTURBANCES	36-37
18. नए पारेषण तत्वों की स्थापना NEW ELEMENTS COMMISSIONED	38
19. विभव रूपरेखा VOLTAGE PROFILE	39

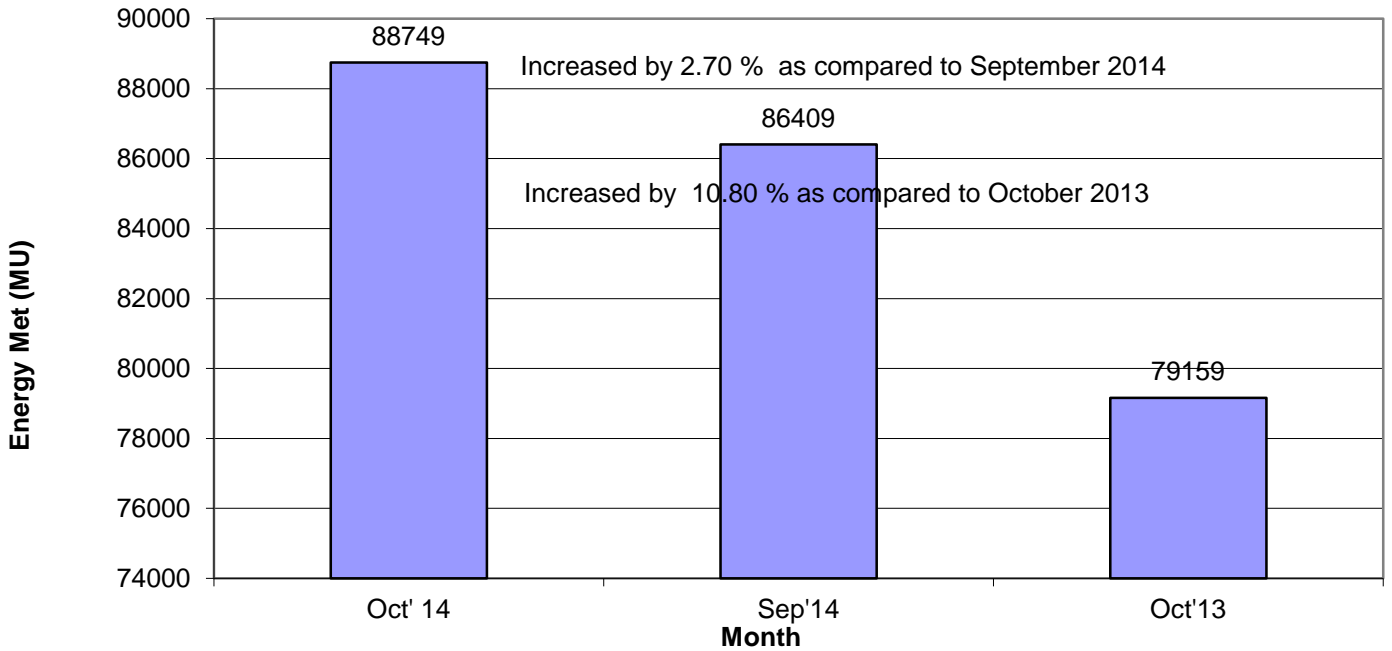
1. SUMMARY REPORT FOR THE MONTH OF OCTOBER 2014

■ Peak Demand Met ■ Oct' 14 Sep'14 Oct'13

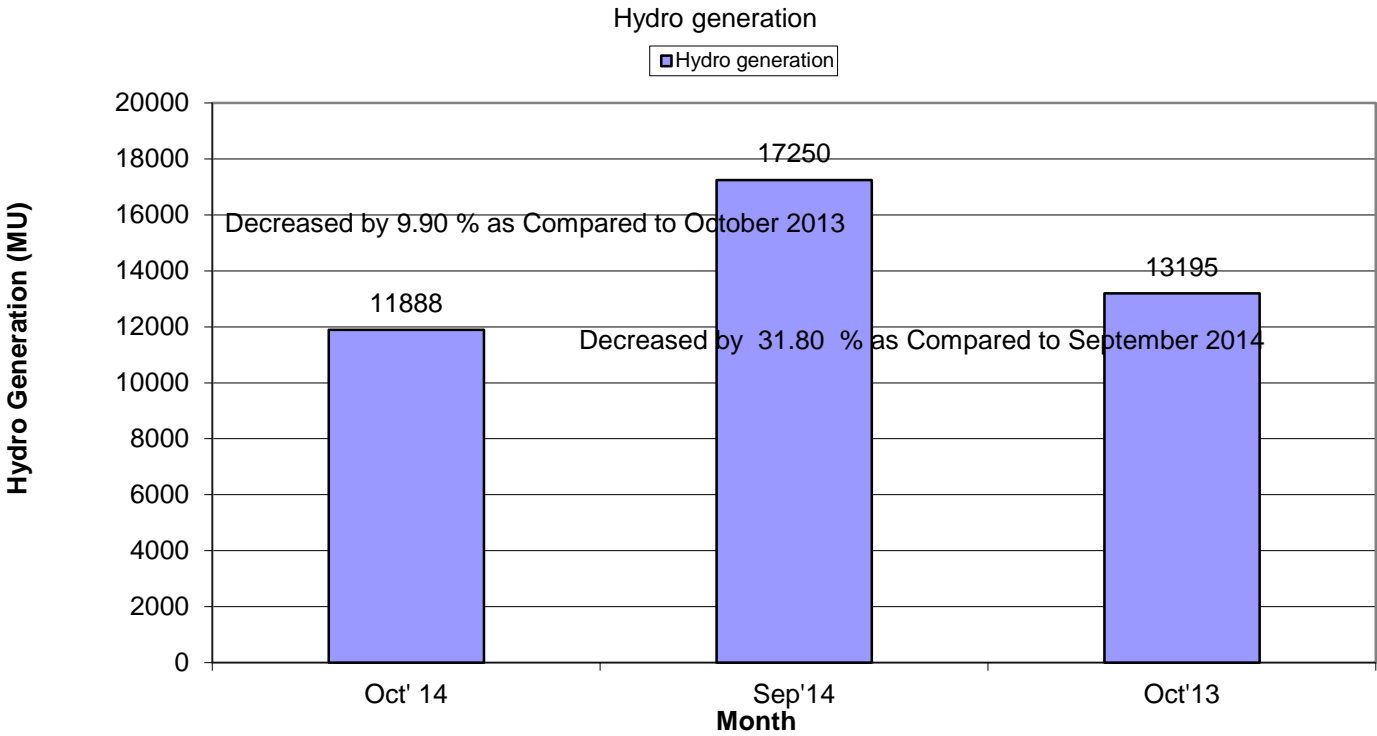
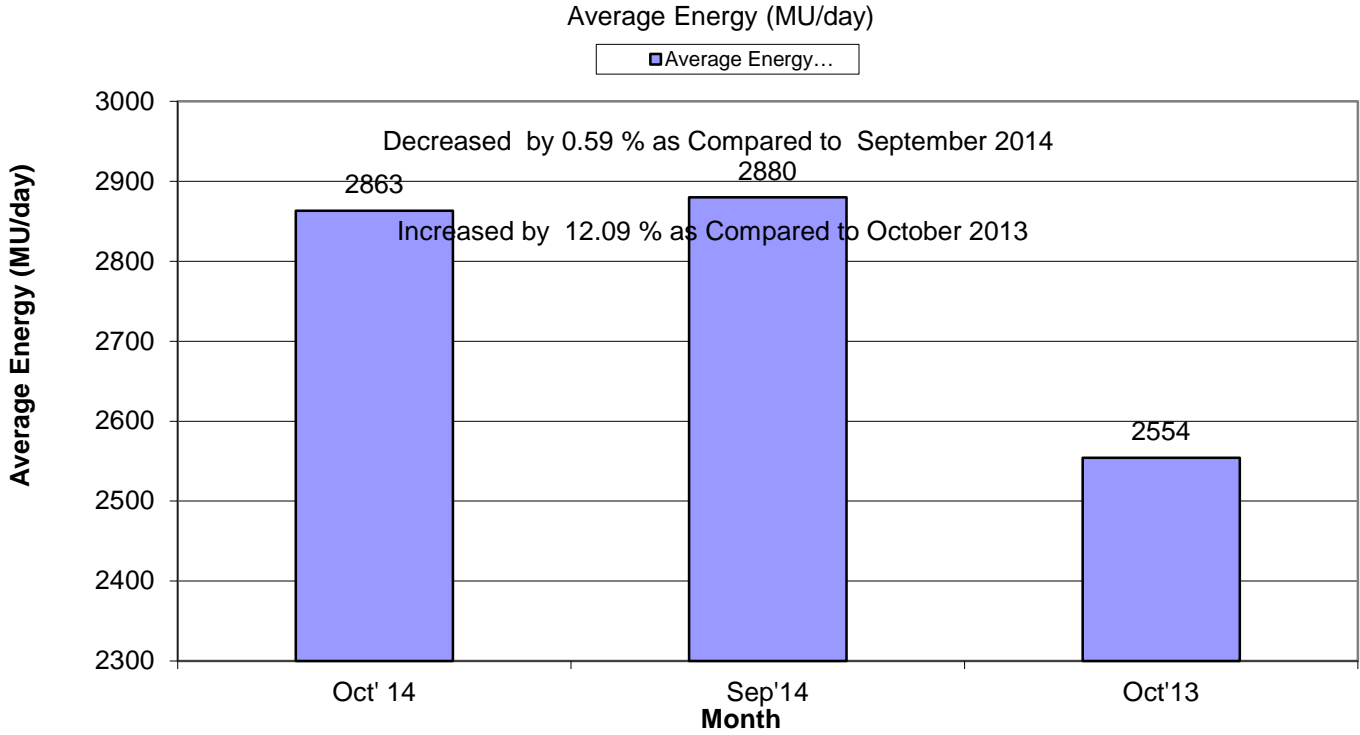


Energy Met

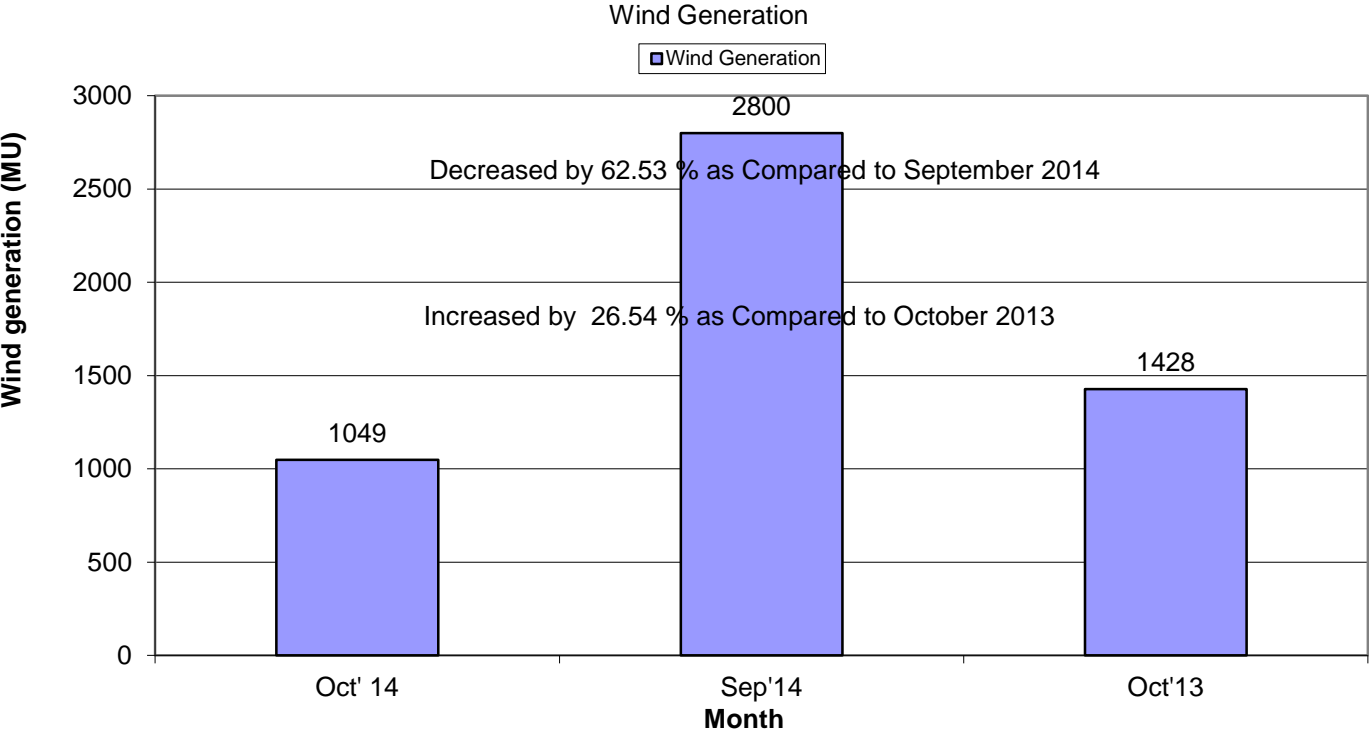
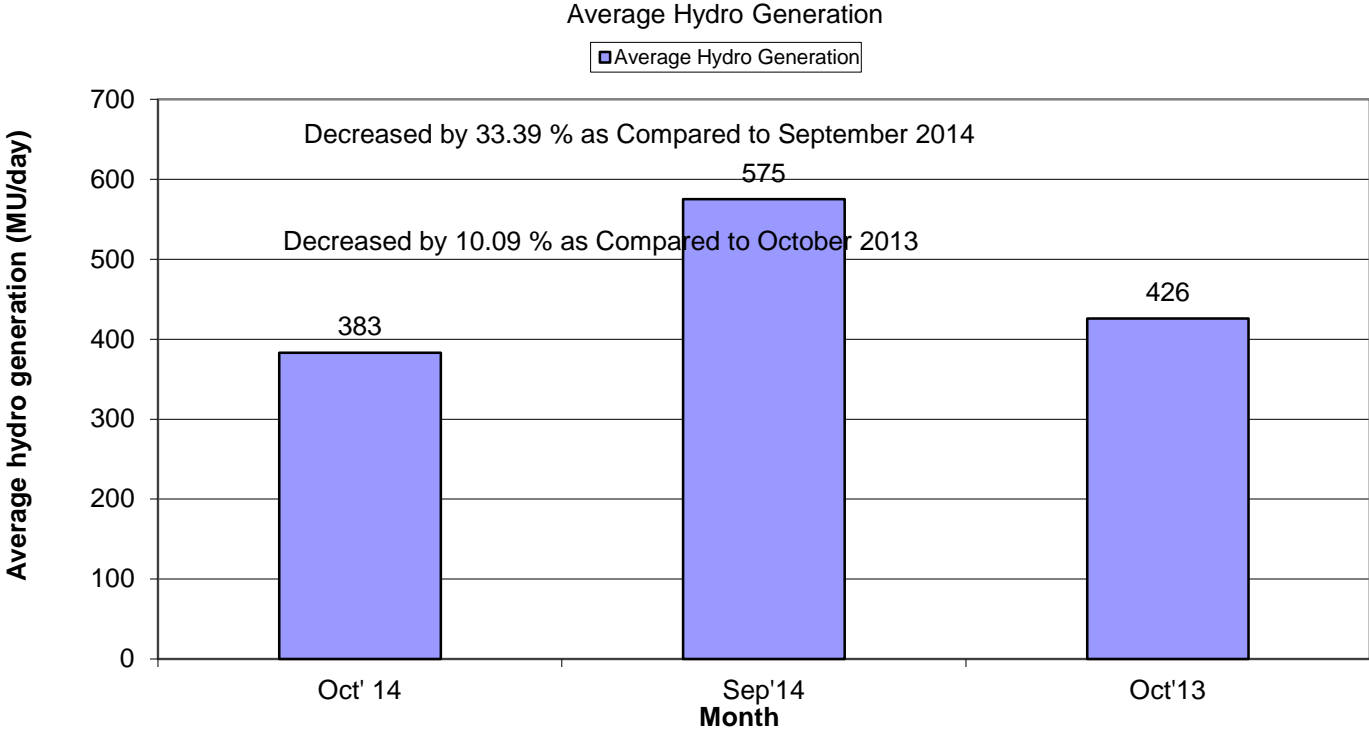
■ Energy Met



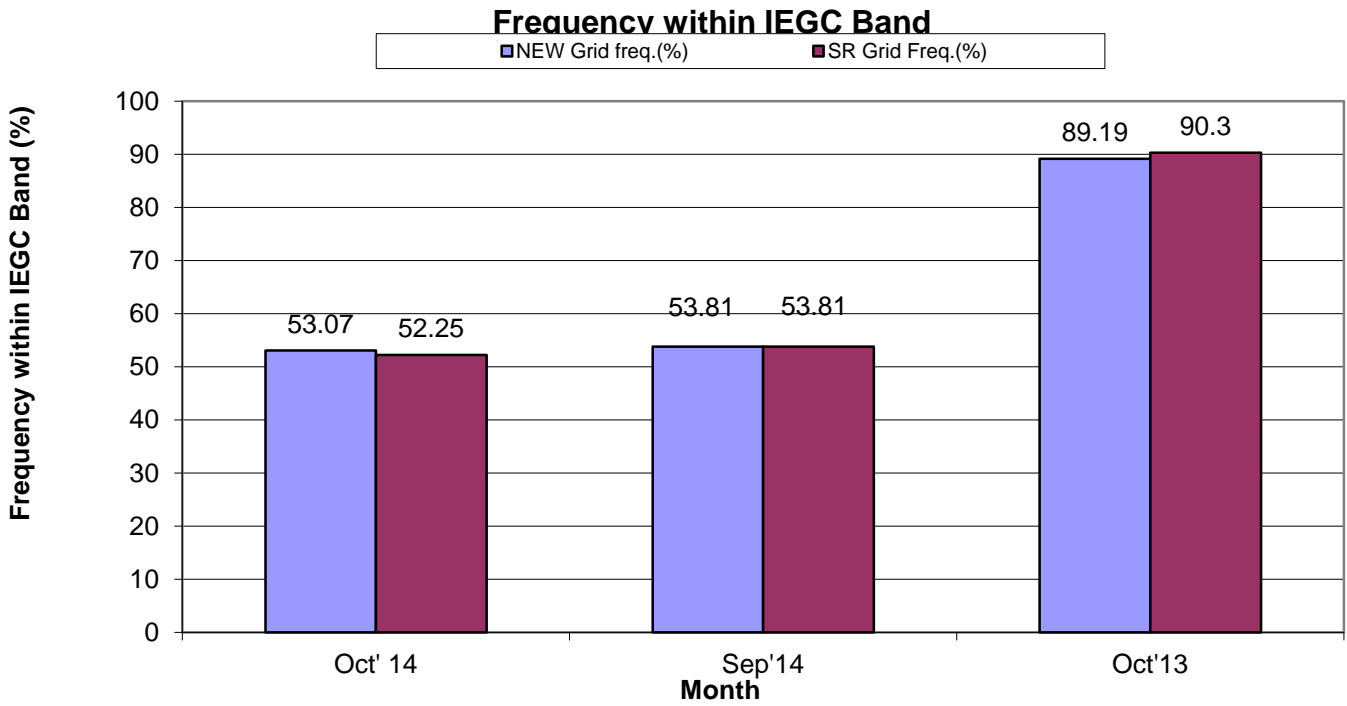
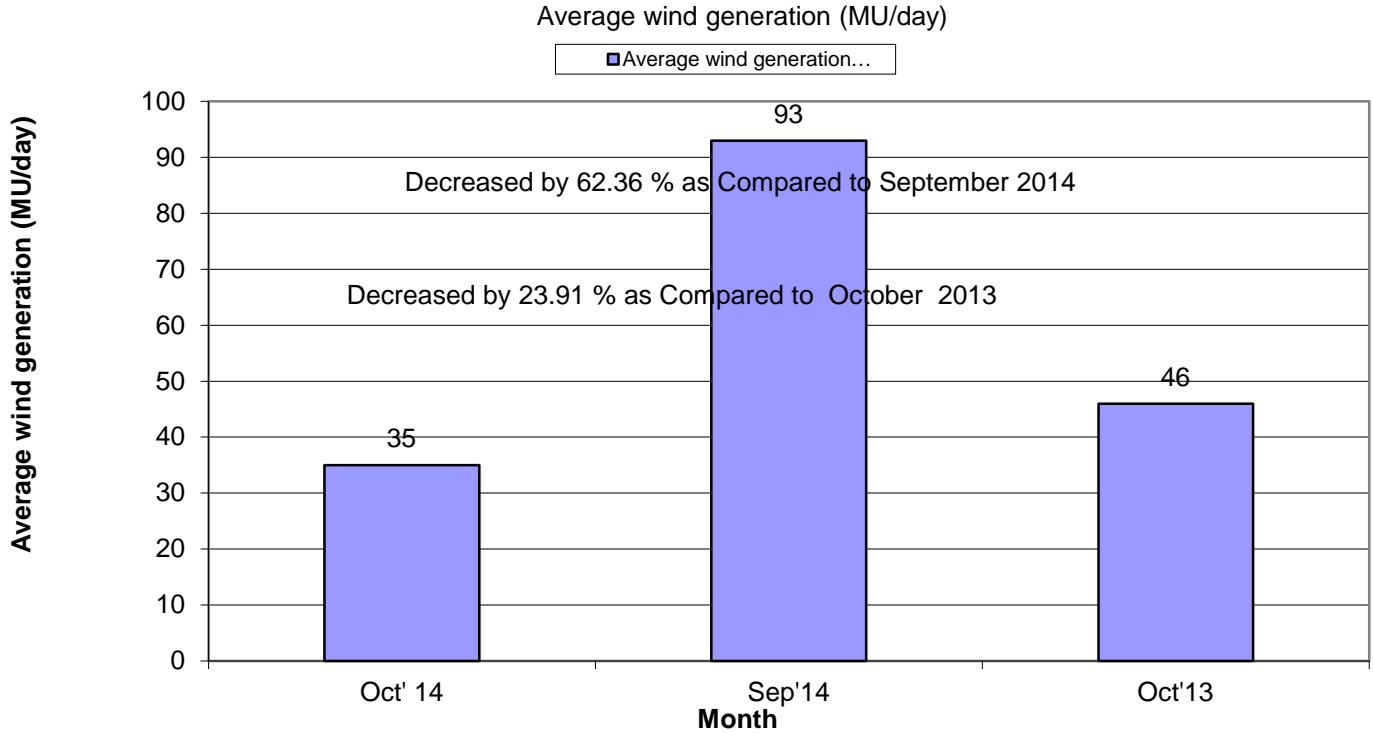
1. SUMMARY REPORT FOR THE MONTH OF OCTOBER 2014



1. SUMMARY REPORT FOR THE MONTH OF OCTOBER 2014



1. SUMMARY REPORT FOR THE MONTH OF OCTOBER 2014



Note: IEGC Frequency band changed from 49.7 -50.2 to 49.9-50.05 wef 17th Feb 2014.

(2) ALL INDIA REGIONWISE INSTALLED CAPACITY

As on 31.08.2014

(All figures are in MW)

S No	Region	THERMAL				NUCLEAR	HYDRO	RES @ MNRE	GRAND TOTAL
		COAL	GAS	DIESEL	TOTAL				
1	NR	39481	5331	13	44825	1620	16598	5936	68979
2	WR	58860	10915	17	69792	1840	7448	11271	90351
3	SR	27383	4963	939	33285	1320	11398	13785	59787
4	ER	26528	190	17	26735	0	4113	433	31281
5	NER	60	1209	143	1411	0	1242	257	2910
6	ISLANDS	0	0	70	70	0	0	11	81
		152311	22608	1200	176119	4780	40799	31692	253389

Remarks: Data from CEA website

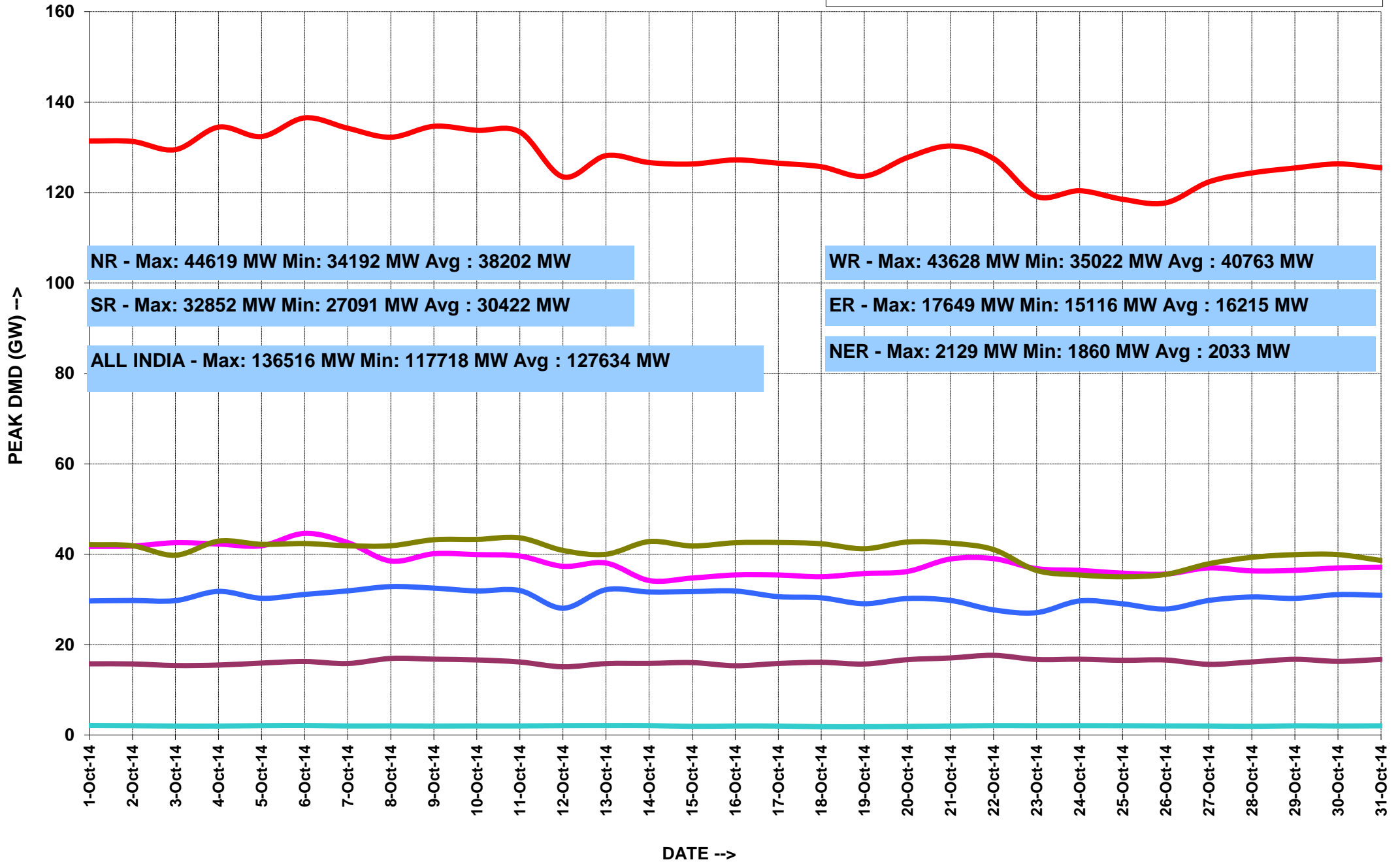
3. राष्ट्रीय स्तर पर संध्याकालीन शिखर विद्युत मांग पूर्ति
PEAK DEMAND MET AT NATIONAL LEVEL

माह:- अक्टूबर 2014 MONTH:- October 2014
सभी आकड़े मेगावाट में All figures in MW

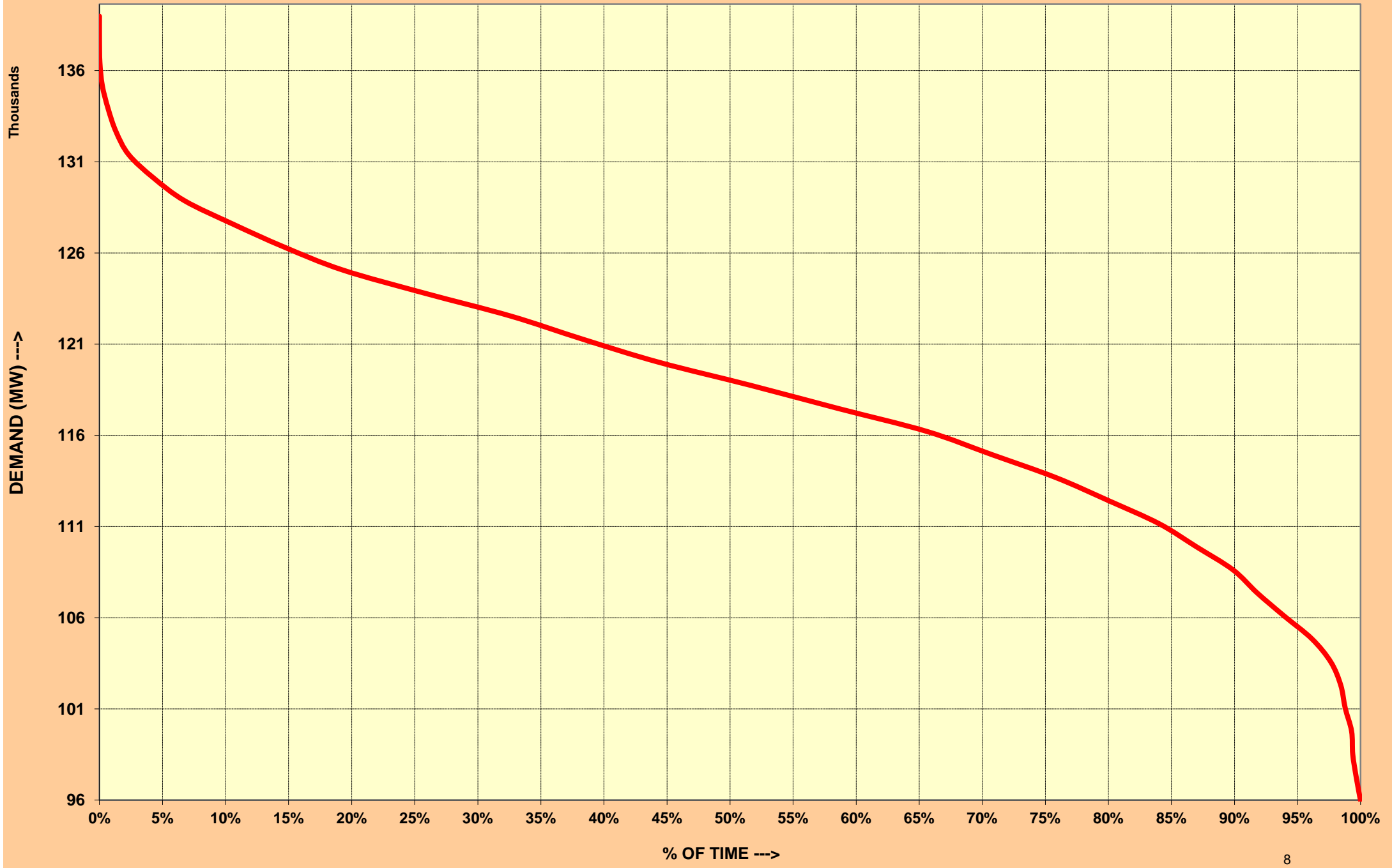
दिनांक Date	उत्तरी क्षे. NR	पश्चिमी क्षे. WR	दक्षिणी क्षे. SR	पूर्वी क्षे. ER	पूर्वोत्तर क्षे. NER	कुल TOTAL
01-Oct-14	41713	42122	29676	15768	2129	131408
02-Oct-14	41818	41882	29772	15747	2079	131298
03-Oct-14	42556	39779	29746	15393	2012	129486
04-Oct-14	42259	42907	31796	15500	2008	134470
05-Oct-14	41882	42198	30271	15938	2092	132381
06-Oct-14	44619	42370	31120	16285	2122	136516
07-Oct-14	42584	41881	31899	15839	2028	134231
08-Oct-14	38499	41881	32852	16962	2039	132233
09-Oct-14	40115	43210	32514	16798	2013	134650
10-Oct-14	39923	43285	31885	16629	2034	133756
11-Oct-14	39609	43628	31971	16169	2034	133411
12-Oct-14	37334	40849	28068	15116	2094	123461
13-Oct-14	38064	40001	32169	15820	2109	128163
14-Oct-14	34192	42809	31661	15867	2102	126631
15-Oct-14	34744	41833	31747	16035	1947	126306
16-Oct-14	35426	42550	31875	15347	2018	127216
17-Oct-14	35414	42603	30622	15846	2005	126490
18-Oct-14	35031	42321	30374	16111	1868	125705
19-Oct-14	35741	41219	29061	15728	1860	123609
20-Oct-14	36195	42705	30219	16694	1925	127738
21-Oct-14	38958	42457	29790	17070	2013	130288
22-Oct-14	39036	41043	27701	17649	2097	127526
23-Oct-14	36819	36423	27091	16732	2078	119143
24-Oct-14	36431	35417	29678	16785	2086	120397
25-Oct-14	35827	35022	29037	16547	2072	118505
26-Oct-14	35621	35548	27898	16613	2038	117718
27-Oct-14	36982	37902	29785	15659	2016	122344
28-Oct-14	36321	39325	30552	16182	1947	124327
29-Oct-14	36440	39914	30248	16769	2061	125432
30-Oct-14	36982	39930	31081	16315	2023	126331
31-Oct-14	37123	38633	30913	16746	2060	125475
उच्चतम MAXIMUM	44619	43628	32852	17649	2129	136516
निम्नतम MINIMUM	34192	35022	27091	15116	1860	117718
औसत AVERAGE	38202	40763	30422	16215	2033	127634
अब तक का उच्चतम All Time Max.	46681	43764	36126	17649	2129	138215
दिनांक Date	26.08.14	29.09.14	24.03.14	22.10.14	01.10.14	25.09.14

नोट : सभी आकड़े 1900 बजे की मांगपूर्ति पर आधारित हैं । Note: The above figures corresponds to value at 1900 Hrs

PEAK DEMANDS MET DURING THE MONTH OF OCTOBER' 2014



ALL INDIA LOAD DURATION CURVE FOR OCTOBER' 2014



4. राष्ट्रीय स्तर पर विद्युत ऊर्जा आपूर्ति ENERGY MET AT NATIONAL LEVEL

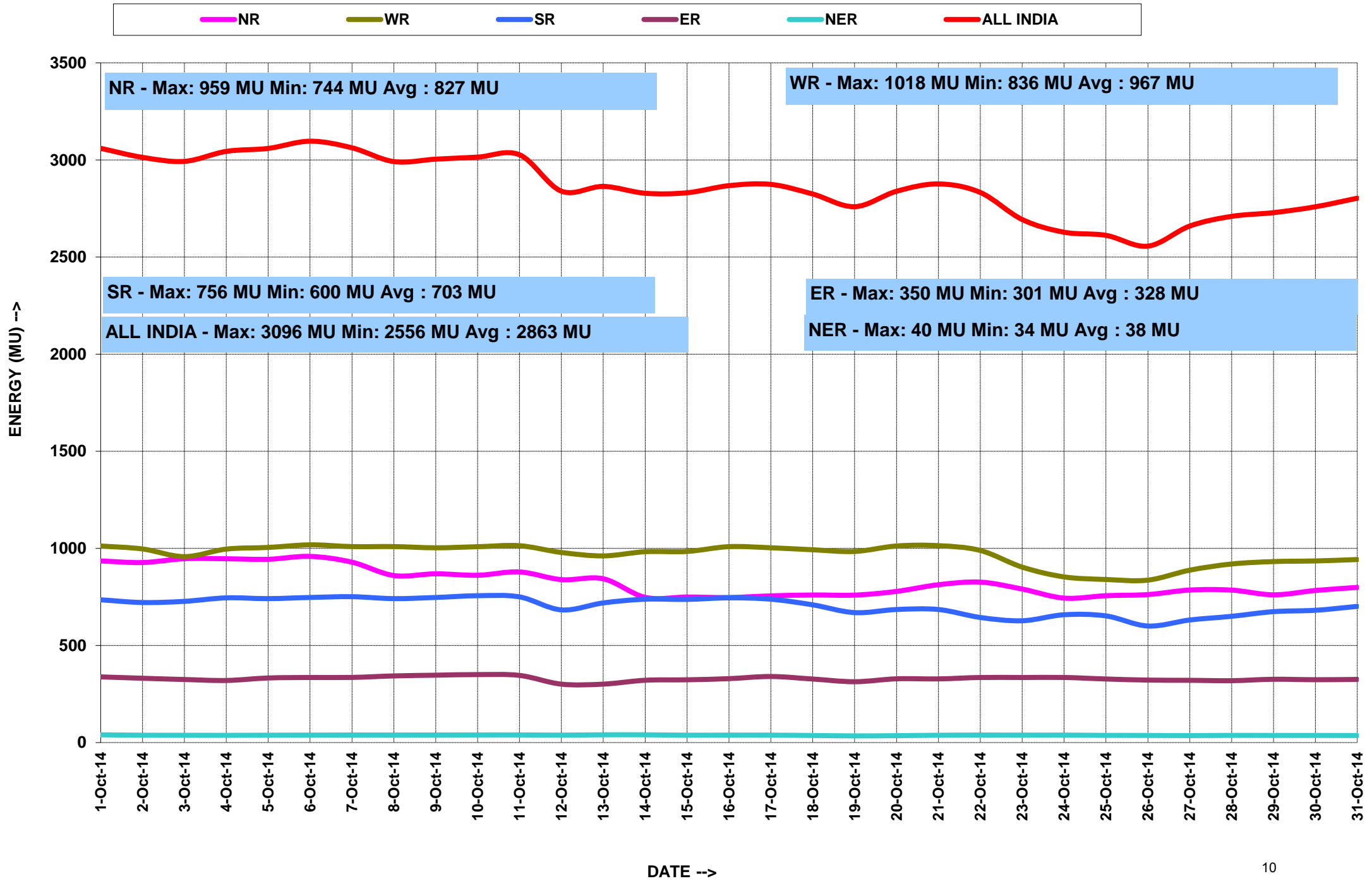
माह:- अक्टूबर 2014

MONTH:- October 2014

सभी आंकड़े मिलियन यूनिट में All figures in MU

दिनांक Date	उत्तरी क्षे. NR	पश्चिमी क्षे. WR	दक्षिणी क्षे. SR	पूर्वी क्षे. ER	पूर्वोत्तर क्षे. NER	कुल TOTAL
01-Oct-14	935	1012	735	338	40	3060
02-Oct-14	927	997	721	331	38	3013
03-Oct-14	947	957	727	325	37	2993
04-Oct-14	946	996	745	320	37	3044
05-Oct-14	944	1005	741	332	38	3059
06-Oct-14	959	1018	747	335	38	3096
07-Oct-14	929	1009	751	335	39	3063
08-Oct-14	860	1009	741	343	39	2992
09-Oct-14	869	1003	747	347	39	3004
10-Oct-14	861	1008	756	350	39	3014
11-Oct-14	878	1014	750	346	39	3027
12-Oct-14	839	979	683	301	38	2839
13-Oct-14	843	961	719	301	40	2864
14-Oct-14	748	983	738	321	40	2828
15-Oct-14	749	984	737	323	38	2831
16-Oct-14	747	1009	745	329	38	2868
17-Oct-14	755	1003	738	340	38	2874
18-Oct-14	760	993	709	327	36	2825
19-Oct-14	759	984	669	313	34	2759
20-Oct-14	778	1012	685	328	35	2839
21-Oct-14	813	1014	685	328	37	2877
22-Oct-14	826	989	644	335	39	2833
23-Oct-14	790	903	627	335	38	2693
24-Oct-14	744	853	658	335	38	2628
25-Oct-14	756	840	652	327	37	2612
26-Oct-14	762	836	600	322	36	2556
27-Oct-14	785	888	631	320	36	2660
28-Oct-14	785	919	650	319	37	2709
29-Oct-14	761	932	674	326	36	2729
30-Oct-14	783	935	681	323	36	2759
31-Oct-14	799	942	701	325	36	2803
कुल TOTAL	25635	29985	21787	10177	1165	88749
उच्चतम MAXIMUM	959	1018	756	350	40	3096
निम्नतम MINIMUM	744	836	600	301	34	2556
औसत AVERAGE	827	967	703	328	38	2863
अब तक का उच्चतम All Time Max.	1096	1028	845	367	40	3120
दिनांक Date	11.07.14	29.09.14	26.03.14	26.04.14	02.07.2014	25.06.14

ENERGY MET DURING THE MONTH OF OCTOBER' 2014



5.वर्ष 2014-15 के लिए आवृत्ति रूपरेखा FREQUENCY PROFILE FOR YEAR 2014-15

राष्ट्रीय ग्रिड NATIONAL GRID									
फ्रिक्वेंसी रूपरेखा (Hz)		49.0-49.9	<49.9	49.9-50.05	>50.05	उच्चतम फ्रिक्वेंसी	निम्नतम फ्रिक्वेंसी	औसत फ्रिक्वेंसी	
ऑल इंडिया ग्रिड NEW GRID**									
% समय	Oct-14		24.82	24.82	53.07	22.11	50.48	49.53	49.97
द. क्षे. ग्रिड SR GRID**									
% समय	Oct-14		25.32	25.32	52.25	22.38	50.48	49.53	49.97
ऑल इंडिया ग्रिड ALL INDIA GRID									
फ्रिक्वेंसी रूपरेखा (Hz)		<49.7	49.0-49.9	<49.9	49.9-50.05	>50.05	उच्चतम फ्रिक्वेंसी	निम्नतम फ्रिक्वेंसी	औसत फ्रिक्वेंसी
% समय	Sep-14	1.59	28.51	28.51	53.81	17.68	50.37	49.34	49.95
% समय	Aug-14	4.50	40.11	40.11	49.04	10.85	50.34	49.36	49.97
% समय	Jul-14	0.00	34.45	34.45	50.36	14.91	50.36	49.40	49.94
ऑल इंडिया ग्रिड NEW GRID*									
% समय	Jun-14	4.99	37.27	37.27	45.32	17.41	50.65	49.32	49.93
% समय	May-14	0.93	22.39	22.39	53.09	24.52	50.56	49.41	49.98
द. क्षे. ग्रिड SR GRID*									
% समय	Jun-14	6.25	40.68	40.68	43.93	15.40	50.65	49.32	49.92
% समय	May-14	1.46	26.88	26.88	51.54	21.58	50.56	49.41	49.97

* On Account of separation of SR GRID from NEW GRID for a brief time during the month of May & June 2014

** On Account of separation of SR GRID from NEW GRID on 16th October 2014

5.1 अक्टूबर 2014 के लिए आवृत्ति रूपरेखा FREQUENCY PROFILE FOR OCTOBER 2014

न्यू ग्रिड NEW GRID									
फ्रिक्वेंसी रूपरेखा (Hz)		<49.0	49.0-49.9	<49.9	49.9-50.05	>50.05	उच्चतम फ्रिक्वेंसी	निम्नत म फ्रिक्वेंसी	औसत फ्रिक्वें सी
% समय	01-Oct-14	0.00	44.10	44.10	46.30	9.60	50.38	49.62	49.91
	02-Oct-14	0.00	27.79	27.79	45.06	27.15	50.48	49.60	49.96
	03-Oct-14	0.00	3.96	3.96	65.21	30.83	50.33	49.83	50.02
	04-Oct-14	0.00	31.05	31.05	56.46	12.49	50.20	49.68	49.95
	05-Oct-14	0.00	32.77	32.77	55.97	11.26	50.27	49.56	49.94
	06-Oct-14	0.00	44.00	44.00	50.00	6.00	50.25	49.64	49.91
	07-Oct-14	0.00	58.52	58.52	35.54	5.94	50.24	49.53	49.88
	08-Oct-14	0.00	13.97	13.97	55.24	30.79	50.24	49.56	50.00
	09-Oct-14	0.00	41.60	41.60	51.39	7.01	50.19	49.55	49.91
	10-Oct-14	0.00	64.70	64.70	32.20	3.10	50.16	49.61	49.87
	11-Oct-14	0.00	24.10	24.10	60.08	15.82	50.21	49.67	49.96
	12-Oct-14	0.00	17.12	17.12	58.13	24.76	50.32	49.70	49.99
	13-Oct-14	0.00	22.44	22.44	52.29	25.27	50.23	49.64	49.98
	14-Oct-14	0.00	12.35	12.35	48.01	39.64	50.27	49.71	50.01
	15-Oct-14	0.00	19.91	19.91	45.74	34.35	50.36	49.63	49.99
	16-10-2014*	0.00	45.30	45.30	47.13	7.57	50.19	49.55	49.91
	17-Oct-14	0.00	39.70	39.70	50.50	9.80	50.20	49.57	49.92
	18-Oct-14	0.00	18.76	18.76	62.62	18.62	50.20	49.62	49.98
	19-Oct-14	0.00	21.00	21.00	55.20	23.80	50.37	49.72	49.98
	20-Oct-14	0.00	7.30	7.30	59.21	33.48	50.35	49.72	50.02
	21-Oct-14	0.00	8.00	8.00	53.70	38.30	50.31	49.70	50.03
	22-Oct-14	0.00	18.50	18.50	51.10	30.40	50.47	49.65	49.99
	23-Oct-14	0.00	2.81	2.81	50.19	47.00	50.39	49.81	50.05
	24-Oct-14	0.00	9.00	9.00	64.10	26.90	50.35	49.67	50.00
	25-Oct-14	0.00	10.25	10.25	58.67	31.08	50.28	49.74	50.01
	26-Oct-14	0.00	6.49	6.49	57.78	35.73	50.27	49.74	50.02
	27-Oct-14	0.00	15.31	15.31	56.74	27.95	50.26	49.67	49.99
	28-Oct-14	0.00	20.81	20.81	57.42	21.77	50.23	49.71	49.98
	29-Oct-14	0.00	18.66	18.66	64.87	16.47	50.24	49.62	49.97
	30-Oct-14	0.00	44.20	44.20	45.40	10.40	50.20	49.57	49.91
	31-Oct-14	0.00	36.25	36.25	44.65	19.10	50.27	49.60	49.94

* On 16th Oct, at 13:14 Hrs NEW Grid & SR Grid were disconnected due tripping of 765 /400 KV ICT-1 at Sholapur. Further NEW Grid and SR Grid were synchronised at 15:38 Hrs.

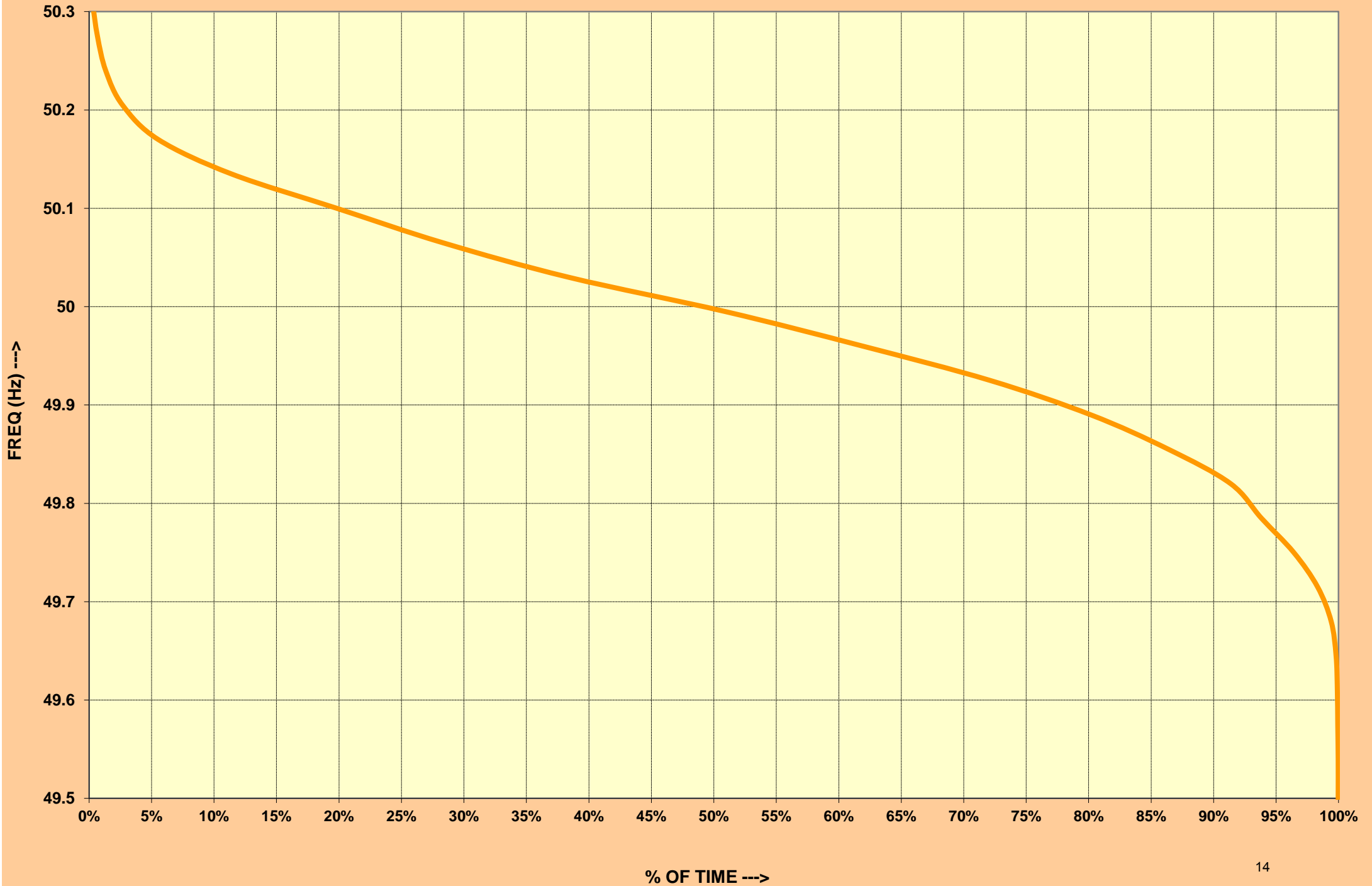
5.2 अक्टूबर 2014 के लिए आवृत्ति रूपरेखा FREQUENCY PROFILE FOR OCTOBER 2014

द क्षेत्र गिड SR GRID

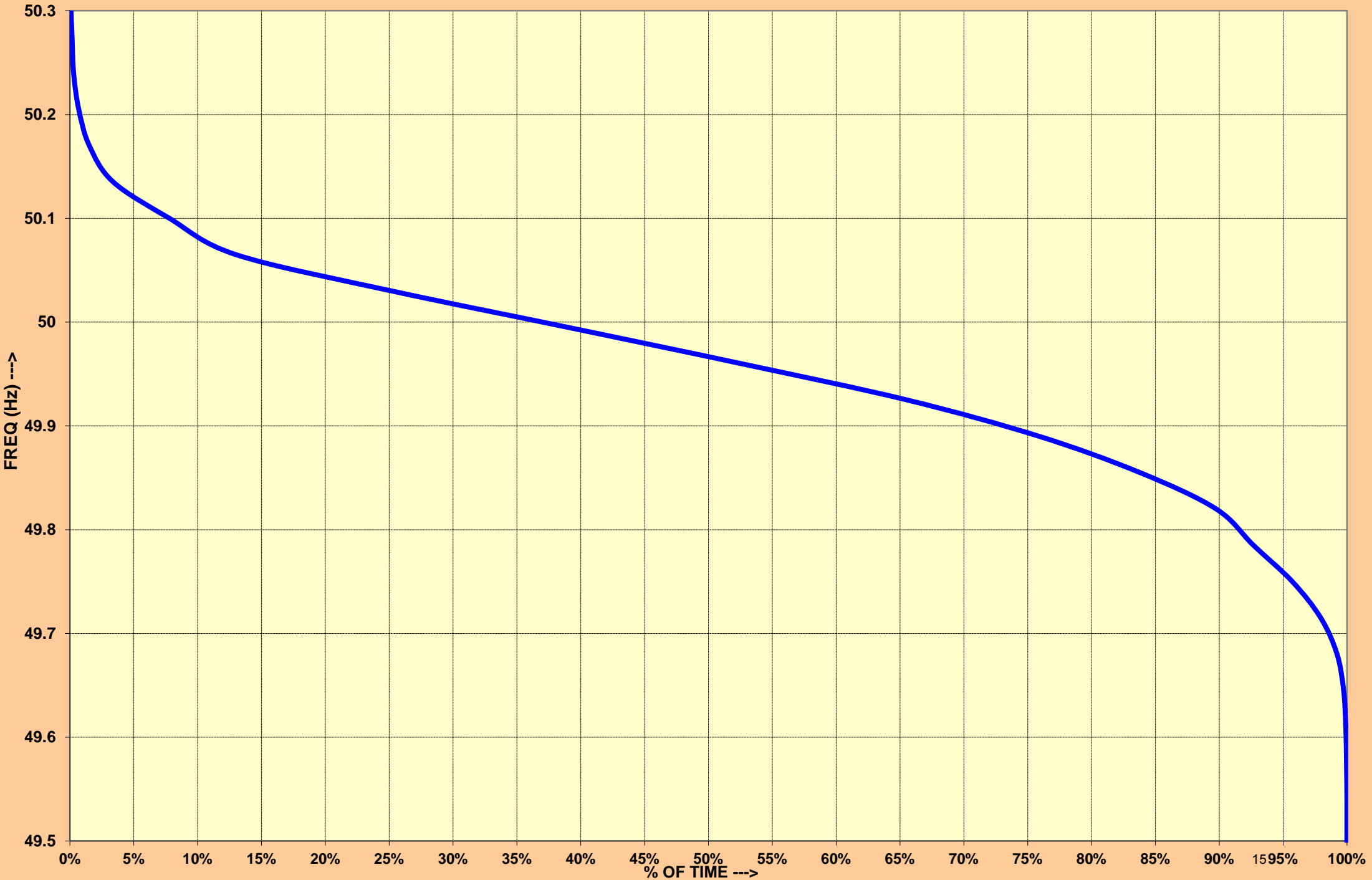
फ्रिक्वेंसी रूपरेखा (Hz)	<49.0	49.0-49.9	<49.9	49.9-50.05	>50.05	उच्चतम फ्रिक्वेंसी	निम्नतम फ्रिक्वेंसी	औसत फ्रिक्वेंसी
01-Oct-14	0.00	44.10	44.10	46.30	9.60	50.38	49.62	49.91
02-Oct-14	0.00	27.79	27.79	45.06	27.15	50.48	49.60	49.96
03-Oct-14	0.00	3.96	3.96	65.21	30.83	50.33	49.83	50.02
04-Oct-14	0.00	31.05	31.05	56.46	12.49	50.20	49.68	49.95
05-Oct-14	0.00	32.77	32.77	55.97	11.26	50.27	49.56	49.94
06-Oct-14	0.00	44.00	44.00	50.00	6.00	50.25	49.64	49.91
07-Oct-14	0.00	58.52	58.52	35.54	5.94	50.24	49.53	49.88
08-Oct-14	0.00	13.97	13.97	55.24	30.79	50.24	49.56	50.00
09-Oct-14	0.00	41.60	41.60	51.39	7.01	50.19	49.55	49.91
10-Oct-14	0.00	64.70	64.70	32.20	3.10	50.16	49.61	49.87
11-Oct-14	0.00	24.10	24.10	60.08	15.82	50.21	49.67	49.96
12-Oct-14	0.00	17.12	17.12	58.13	24.76	50.32	49.70	49.99
13-Oct-14	0.00	22.44	22.44	52.29	25.27	50.23	49.64	49.98
14-Oct-14	0.00	12.35	12.35	48.01	39.64	50.27	49.71	50.01
15-Oct-14	0.00	19.91	19.91	45.74	34.35	50.36	49.63	49.99
16-Oct-2014*	0.00	49.38	49.38	29.93	18.89	50.19	49.54	49.90
17-Oct-14	0.00	39.70	39.70	50.50	9.80	50.20	49.57	49.92
18-Oct-14	0.00	18.76	18.76	62.62	18.62	50.20	49.62	49.98
19-Oct-14	0.00	21.00	21.00	55.20	23.80	50.37	49.72	49.98
20-Oct-14	0.00	7.30	7.30	59.21	33.48	50.35	49.72	50.02
21-Oct-14	0.00	8.00	8.00	53.70	38.30	50.31	49.70	50.03
22-Oct-14	0.00	18.50	18.50	51.10	30.40	50.47	49.65	49.99
23-Oct-14	0.00	2.81	2.81	50.19	47.00	50.39	49.81	50.05
24-Oct-14	0.00	9.00	9.00	64.10	26.90	50.35	49.67	50.00
25-Oct-14	0.00	10.25	10.25	58.67	31.08	50.28	49.74	50.01
26-Oct-14	0.00	6.49	6.49	57.78	35.73	50.27	49.74	50.02
27-Oct-14	0.00	15.31	15.31	56.74	27.95	50.26	49.67	49.99
28-Oct-14	0.00	20.81	20.81	57.42	21.77	50.23	49.71	49.98
29-Oct-14	0.00	18.66	18.66	64.87	16.47	50.24	49.62	49.97
30-Oct-14	0.00	44.20	44.20	45.40	10.40	50.20	49.57	49.91
31-Oct-14	0.00	36.25	36.25	44.65	19.10	50.27	49.60	49.94

* On 16th Oct, at 13:14 Hrs NEW Grid & SR Grid were disconnected due tripping of 765/400 KV ICT-1 at Sholapur. Further NEW Grid and SR Grid were synchronised at 15:38 Hrs.

NEW GRID FREQUENCY DURATION CURVE FOR OCTOBER' 2014



SOUTHERN GRID FREQUENCY DURATION CURVE FOR OCTOBER' 2014



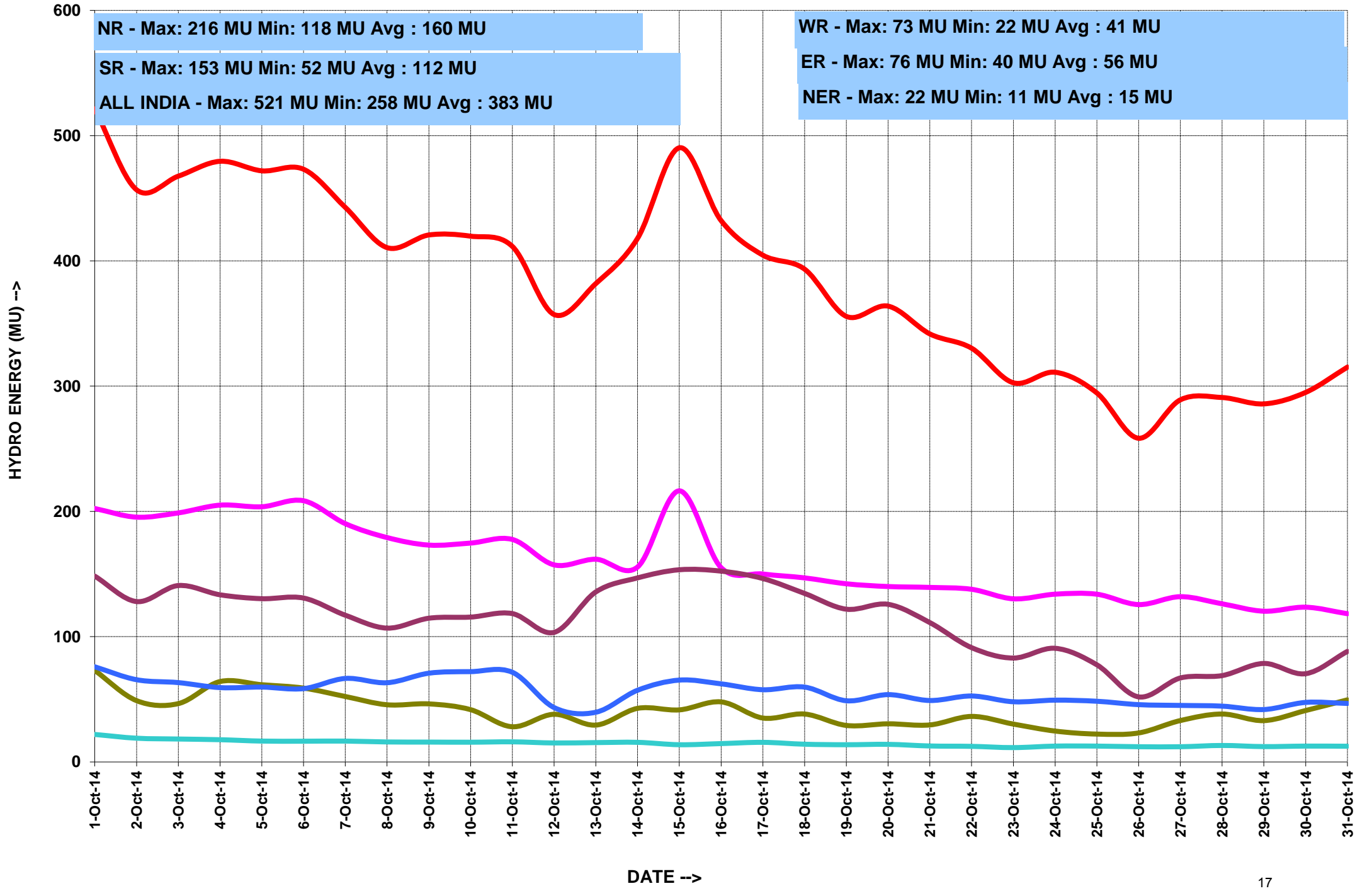
6.राष्ट्रीय स्तर पर जल विद्युत उत्पादन
HYDRO GENERATION AT NATIONAL LEVEL

माह:- अक्टूबर 2014 MONTH:- October 2014

सभी आंकड़े मिलियन यूनिट में All figures in MU

दिनांक Date	उत्तरी क्षे. NR	पश्चिमी क्षे. WR	दक्षिणी क्षे. SR	पूर्वी क्षे. ER	पूर्वोत्तर क्षे. NER	कुल TOTAL
01-Oct-14	202	73	148	76	22	521
02-Oct-14	195	49	128	66	19	457
03-Oct-14	199	47	141	63	18	468
04-Oct-14	205	64	133	59	18	480
05-Oct-14	204	62	130	60	17	472
06-Oct-14	209	59	131	58	17	473
07-Oct-14	190	52	117	67	17	443
08-Oct-14	179	46	107	63	16	411
09-Oct-14	173	46	115	71	16	421
10-Oct-14	175	42	116	72	16	420
11-Oct-14	178	28	118	72	16	412
12-Oct-14	157	38	103	43	15	357
13-Oct-14	162	29	136	40	15	382
14-Oct-14	156	43	147	57	16	418
15-Oct-14	216	42	153	65	14	490
16-Oct-14	155	48	152	62	15	432
17-Oct-14	150	35	146	58	16	405
18-Oct-14	147	38	135	60	14	393
19-Oct-14	142	29	122	49	14	356
20-Oct-14	140	30	126	54	14	364
21-Oct-14	139	30	111	49	13	342
22-Oct-14	138	36	91	53	12	330
23-Oct-14	130	30	83	48	11	303
24-Oct-14	134	25	91	49	13	311
25-Oct-14	134	22	78	48	13	295
26-Oct-14	126	23	52	46	12	258
27-Oct-14	132	33	67	45	12	289
28-Oct-14	126	38	69	45	13	291
29-Oct-14	120	33	79	42	12	286
30-Oct-14	124	41	70	47	13	295
31-Oct-14	118	50	88	47	13	315
कुल TOTAL	4955	1260	3483	1733	458	11888
उच्चतम MAXIMUM	216	73	153	76	22	521
निम्नतम MINIMUM	118	22	52	40	11	258
औसत AVERAGE	160	41	112	56	15	383
अब तक का उच्चतम All Time Max.	332	142	202	94	27	712
दिनांक Date	31.07.14	29.09.11	08.08.13	09.09.13	14.09.10	27.08.13

HYDRO ENERGY DURING THE MONTH OF OCTOBER' 2014



7. राष्ट्रीय स्तर पर पवन ऊर्जा उत्पादन
WIND GENERATION AT NATIONAL LEVEL

माह:- अक्टूबर 2014

MONTH:- October 2014

सभी आंकड़े मिलियन यूनिट में All figures in MU

दिनांक Date	उत्तरी क्षे. NR	पश्चिमी क्षे. WR	दक्षिणी क्षे. SR	पूर्वी क्षे. ER	पूर्वोत्तर क्षे. NER	कुल TOTAL
01-Oct-14	12	7	7	-----	-----	26
02-Oct-14	13	5	5	-----	-----	23
03-Oct-14	22	7	7	-----	-----	36
04-Oct-14	19	10	14	-----	-----	43
05-Oct-14	11	13	20	-----	-----	44
06-Oct-14	5	10	35	-----	-----	50
07-Oct-14	3	11	37	-----	-----	51
08-Oct-14	6	11	27	-----	-----	44
09-Oct-14	5	11	14	-----	-----	30
10-Oct-14	2	7	38	-----	-----	47
11-Oct-14	3	11	51	-----	-----	65
12-Oct-14	4	14	50	-----	-----	68
13-Oct-14	10	16	38	-----	-----	64
14-Oct-14	15	12	11	-----	-----	38
15-Oct-14	10	14	10	-----	-----	34
16-Oct-14	7	13	11	-----	-----	31
17-Oct-14	7	9	11	-----	-----	27
18-Oct-14	3	8	9	-----	-----	20
19-Oct-14	3	7	10	-----	-----	20
20-Oct-14	3	13	18	-----	-----	34
21-Oct-14	3	13	22	-----	-----	38
22-Oct-14	2	13	18	-----	-----	33
23-Oct-14	2	10	12	-----	-----	24
24-Oct-14	2	9	11	-----	-----	22
25-Oct-14	3	22	6	-----	-----	31
26-Oct-14	3	14	4	-----	-----	21
27-Oct-14	2	9	4	-----	-----	15
28-Oct-14	9	4	5	-----	-----	18
29-Oct-14	8	7	8	-----	-----	23
30-Oct-14	1	18	10	-----	-----	29
31-Oct-14	2	18	7	-----	-----	27
कुल TOTAL	198	328	523	1049
उच्चतम MAXIMUM	22	22	51	68
निम्नतम MINIMUM	1	4	4	15
औसत AVERAGE	7	11	17	35
अब तक का उच्चतम All Time Max.	34.9	102.8	125.1	223.8
दिनांक Date	12.06.12	22.06.14	06.08.14	03.08.12

8. ACTUAL POWER SUPPLY POSITION - OCTOBER 2014

REGION	STATE	Requirement/Availability in MU/DAY			Requirement/Availability in MU				Peak Demand/Peak Met in MW			
		Requirement	Energy met	Surplus(+)/ Deficit(-)	Requirement	Energy met	Surplus(+)/ Deficit(-)	% Shortage	Requirement	Peak Demand Met	Surplus(+)/ Deficit(-)	% Shortage
NR	Chandigarh	3.8	3.8	0.0	118.8	118.8	0.0	0.0	248.0	248.0	0.0	0.0
	Delhi	75.7	75.6	0.0	2345.9	2344.7	-1.2	-0.1	4570.0	4570.0	0.0	0.0
	Haryana	126.2	125.4	-0.8	3912.7	3888.5	-24.2	-0.6	7818.0	7818.0	0.0	0.0
	H.P.	22.8	22.8	0.0	707.9	706.4	-1.5	-0.2	1312.0	1312.0	0.0	0.0
	J&K	43.2	34.6	-8.7	1339.5	1071.4	-268.2	-20.0	2521.0	2017.0	-504.0	-20.0
	Punjab	125.8	120.5	-5.3	3900.8	3736.3	-164.5	-4.2	7983.0	7919.0	-64.0	-0.8
	Rajasthan	190.1	188.0	-2.0	5892.4	5829.5	-62.8	-1.1	9339.0	9339.0	0.0	0.0
	U.P.	272.8	228.6	-44.1	8456.0	7087.5	-1368.5	-16.2	13003.0	13003.0	0.0	0.0
	Uttarakhand	32.0	29.9	-2.1	992.9	927.2	-65.7	-6.6	1762.0	1687.0	-75.0	-4.3
	NFF/Railway	2.3	2.3	0.0	72.2	72.2	0.0	0.0	100.0	100.0	0.0	0.0
	TOTAL	894.8	831.7	-63.1	27739.1	25782.4	-1956.7	-7.1	46544.0	44618.0	-1926.0	-4.1
WR	Gujarat	284.6	284.2	-0.4	8823.2	8811.7	-11.5	-0.1	14010.0	14005.0	-5.0	0.0
	Madhya Pradesh	180.1	180.3	0.1	5583.6	5588.0	4.4	0.1	8717.0	8750.0	33.0	0.4
	Chhattisgarh	68.9	68.7	-0.2	2137.4	2130.7	-6.7	-0.3	3530.0	3438.0	-92.0	-2.6
	Maharashtra	410.2	405.8	-4.5	12717.3	12578.4	-138.8	-1.1	20892.0	20399.0	-493.0	-2.4
	Goa	8.2	8.3	0.0	255.6	256.8	1.3	0.5	464.0	464.0	0.0	0.0
	D&D	5.4	5.4	0.0	168.1	168.1	0.0	0.0	261.0	261.0	0.0	0.0
	DNH	13.8	13.7	0.0	426.7	425.8	-0.9	-0.2	681.0	681.0	0.0	0.0
	ESIL	7.1	7.1	0.0	221.4	220.9	-0.5	-0.2	412.0	412.0	0.0	0.0
	TOTAL	978.5	973.6	-4.9	30333.3	30180.5	-152.8	-0.5	46100.0	44988.0	-1112.0	-2.4
SR	AP-TRANSCO	135.0	123.6	-11.4	4185.0	3833.0	-352.0	-8.4	6492.0	6482.0	-10.0	-0.2
	TG - TRANSCO	157.8	136.8	-21.0	4893.0	4242.0	-651.0	-13.3	7422.0	6648.0	-774.0	-10.4
	KPTCL	151.9	145.3	-6.6	4708.0	4503.0	-205.0	-4.4	7995.0	7574.0	-421.0	-5.3
	KSEB	59.0	58.4	-0.6	1828.0	1810.0	-18.0	-1.0	3281.0	3281.0	0.0	0.0
	TNEB	242.8	232.6	-10.2	7528.0	7212.0	-316.0	-4.2	12519.0	11800.0	-719.0	-5.7
	PONDICHERRY	6.1	6.0	-0.1	190.0	187.0	-3.0	-1.6	317.0	312.0	-5.0	-1.6
	TOTAL	752.6	702.8	-49.8	23331.0	21787.0	-1544.0	-6.6	34095.0	34095.0	0.0	0.0
ER	Bihar	44.7	51.7	7.0	1385.0	1602.0	217.0	15.7	2700.0	2831.0	131.0	4.9
	JSEB	21.9	20.7	-1.2	680.0	642.0	-38.0	-5.6	1090.0	1057.0	-33.0	-3.0
	DVC	54.2	55.2	1.0	1680.0	1710.0	30.0	1.8	2710.0	2674.0	-36.0	-1.3
	Odisha	73.9	70.4	-3.5	2292.0	2183.0	-109.0	-4.8	3800.0	3794.0	-6.0	-0.2
	West Bengal	121.7	136.2	14.5	3773.0	4222.0	449.0	11.9	7138.0	7745.0	607.0	8.5
	TOTAL	316.5	334.2	17.7	9810.0	10359.0	549.0	5.6	17027.0	17928.0	901.0	5.3
NER	Arunachal Pradesh	2.3	1.9	-0.3	70.0	59.5	-10.5	-14.9	136.5	126.0	-10.5	-7.7
	Assam	25.5	21.4	-4.0	790.0	664.8	-125.2	-15.8	1388.3	1256.9	-131.4	-9.5
	Manipur	2.2	2.2	0.0	69.0	69.0	0.0	0.0	140.4	134.0	-6.4	-4.6
	MeSEB	5.5	4.6	-0.9	170.0	143.4	-26.6	-15.6	336.8	273.0	-63.8	-18.9
	Mizoram	1.4	1.3	-0.1	43.0	40.4	-2.6	-6.0	87.2	80.0	-7.2	-8.2
	Nagaland	2.1	2.0	-0.1	65.0	60.6	-4.4	-6.7	139.9	118.1	-21.8	-15.6
	Tripura	3.9	3.6	-0.3	120.0	111.3	-8.7	-7.2	310.6	266.0	-44.6	-14.4
	TOTAL	42.8	37.1	-5.7	1327.0	1149.2	-177.8	-13.4	2539.8	2253.9	-285.9	-11.3
ALL INDIA		2985.2	2945.3	-39.9	92540.4	91302.9	-1237.5	-1.3	146305.8	143882.9	-2422.9	-1.7

9. ENERGY COMPARISON OF OCTOBER 2014 Vs OCTOBER 2013

REGION	STATE	Energy Requirement (MU)					Energy Met (MU)				
		Sep-13	Sep-14	Difference	% Change	Average MU/day for Sep-14	Sep-13	Sep-14	Difference	% Change	Average for MU/day Sep -14
NR	Chandigarh	123	119	-4	-3	4	123	119	-4	-3	4
	Delhi	2317	2346	29	1	78	2315	2345	29	1	78
	Haryana	3502	3913	411	12	130	3485	3889	403	12	130
	H.P.	723	708	-15	-2	24	719	706	-13	-2	24
	J&K	1240	1340	100	8	45	991	1071	80	8	36
	Punjab	3712	3901	189	5	130	3712	3736	24	1	125
	Rajasthan	4610	5892	1283	28	196	4611	5830	1218	26	194
	U.P.	7648	8456	808	11	282	6483	7087	605	9	236
	Uttarakhand	966	993	27	3	33	937	927	-10	-1	31
	NFF/Railway	68	72	4	6	2	68	72	4	6	2
TOTAL	24907	27739	2832	11	925	23445	25782	2337	10	859	
WR	Gujarat	6959	8823	1864	27	294	6953	8812	1859	27	294
	Madhya Pradesh	4167	5584	1417	34	186	4167	5588	1421	34	186
	Chhattisgarh	1794	2137	344	19	71	1790	2131	341	19	71
	Maharashtra	10844	12717	1873	17	424	10692	12578	1887	18	419
	Goa	250	256	6	2	9	249	257	8	3	9
	D&D	185	168	-17	-9	6	185	168	-17	-9	6
	DNH	460	427	-33	-7	14	459	426	-34	-7	14
	ESIL	177	221	44	25	7	177	221	44	25	7
TOTAL	24835	30333	5499	22	1011	24671	30181	5509	22	1006	
SR	AP-TRANSCO	7312	4185	1766	24	135	7040	3833	1035	7	128
	TG - TRANSCO		4893			158		4242			141
	KPTCL	5075	4708	-367	-7	157	4649	4503	-146	-3	150
	KSEB	1788	1828	40	2	61	1761	1810	49	3	60
	TNEB	7797	7528	-269	-3	251	7584	7212	-372	-5	240
	PONDY	196	190	-6	-3	6	185	187	2	1	6
TOTAL	22168	23332	1164	5	778	21219	21787	568	3	726	
ER	Bihar	1345	1385	40	3	46	1209	1602	393	33	53
	JSEB	720	680	-40	-6	23	578	642	64	11	21
	DVC	1670	1680	10	1	56	1648	1710	62	4	57
	Odisha	2290	2292	2	0	76	1836	2183	347	19	73
	West Bengal	4270	3773	-497	-12	126	3651	4222	571	16	141
TOTAL	10295	9810	-485	-5	327	8922	10359	1437	16	345	
NER	Arunachal Pradesh	43	70	27	64	2	40	60	19	47	2
	Assam	676	790	114	17	26	646	665	19	3	22
	Manipur	45	69	24	52	2	42	69	27	64	2
	MeSEB	149	170	21	14	6	138	143	5	4	5
	Mizoram	38	43	5	14	1	36	40	4	11	1
	Nagaland	44	65	21	48	2	42	61	19	44	2
	Tripura	109	120	11	10	4	105	111	6	6	4
TOTAL	1104	1327	223	20	44	1050	1149	99	9	38	
ALL INDIA	83309	92541	9233	11	3085	79308	89258	9950	13	2975	

10. DEMAND COMPARISON OF OCTOBER 2014 Vs OCTOBER 2013

REGION	STATE	Peak Requirement (MW)				Peak Met (MW)			
		Oct-13	Oct-14	Difference	% Change	Oct-13	Oct-14	Difference	% Change
NR	Chandigarh	245	248	3	1.2	245	248	3	1.2
	Delhi	4316	4570	254	5.9	4306	4570	264	6.1
	Haryana	6430	7818	1388	21.6	6243	7818	1575	25.2
	H.P.	1270	1312	42	3.3	1270	1312	42	3.3
	J&K	2320	2521	201	8.7	1852	2017	165	8.9
	Punjab	7332	7983	651	8.9	7332	7919	587	8.0
	Rajasthan	7899	9339	1440	18.2	7707	9339	1632	21.2
	U.P.	12134	13003	869	7.2	10984	13003	2019	18.4
	Uttarakhand	1670	1762	92	5.5	1670	1687	17	1.0
	NFF/Railway	100	100	0	0.0	100	100	0	0.0
WR	Gujarat	11351	14010	2659	23	11357	14005	2648	23.3
	Madhya Pradesh	7932	8717	785	10	7937	8750	813	10.2
	Chhattisgarh	3048	3530	482	16	3024	3438	414	13.7
	Maharashtra	17291	20892	3601	21	16925	20399	3474	20.5
	Goa	425	464	39	9	411	464	53	12.9
	D&D	271	261	-10	-3.7	266	261	-5	-1.9
	DNH	658	681	23	3.5	653	681	28	4.3
	ESIL	376	412	36	9.6	321	412	91	28.3
SR	AP-TRANSCO	11914	6492	2000	16.8	10901	6482	2229	20.4
	TG - TRANSCO		7422				6648		
	KPTCL	8754	7995	-759	-8.7	7601	7574	-27	-0.4
	KSEB	3329	3281	-48	-1.4	3037	3281	244	8.0
	TNEB	12287	12519	232	1.9	10477	11800	1323	12.6
	PONDY	374	317	-57	-15.2	315	312	-3	-1.0
ER	Bihar	2700	2700	0	0.0	2230	2831	601	27.0
	JSEB	1200	1090	-110	-9.2	984	1057	73	7.4
	DVC	2695	2710	15	0.6	2718	2674	-44	-1.6
	Odisha	3650	3800	150	4.1	3658	3794	136	3.7
	West Bengal	7480	7138	-342	-4.6	7132	7745	613	8.6
NER	Arunachal Pradesh	115	137	22	19.2	113	126	13	11.5
	Assam	1266	1388	122	9.7	1220	1257	37	3.0
	Manipur	114	140	26	23.0	111	134	23	20.6
	MeSEB	278	337	59	21.1	276	273	-3	-1.1
	Mizoram	61	87	27	43.8	60	80	20	32.7
	Nagaland	99	140	41	40.9	99	118	20	19.8
	Tripura	254	311	56	22.2	250	266	16	6.4

11. SCHEDULE AND DRAWAL OF CONSTITUENTS - OCTOBER 2014

REGION	STATE	SCHEDULE (MU)	ACTUAL DRAWAL (MU)	Over drawal(+)/ Under Drawal(-) (MU)	% OD/UD	SCHEDULE (MU/DAY)	ACTUAL DRAWAL (MU/DAY)	Over drawal(+)/ Under Drawal(-) (MU/DAY)
NR	Chandigarh	112.77	127.77	15.00	13.31	3.64	4.12	0.48
	Delhi	1536.89	1503.91	-32.98	-2.15	49.58	48.51	-1.06
	Haryana	2027.29	1989.67	-37.62	-1.86	65.40	64.18	-1.21
	H.P.	365.60	393.23	27.63	7.56	11.79	12.68	0.89
	J&K	673.78	705.22	31.44	4.67	21.73	22.75	1.01
	Punjab	1819.15	1720.17	-98.98	-5.44	58.68	55.49	-3.19
	Rajasthan	1467.96	1578.49	110.54	7.53	47.35	50.92	3.57
	U.P.	3174.52	3296.86	122.34	3.85	102.40	106.35	3.95
	Uttarakhand	535.85	577.34	41.49	7.74	17.29	18.62	1.34
NFF/Railway	42.52	72.47	29.96	70.46	1.37	2.34	0.97	
WR	Gujarat	1662.37	1665.53	3.16	0.19	53.62	53.73	0.10
	Madhya Pradesh	2950.09	2954.72	4.63	0.16	95.16	95.31	0.15
	Maharashtra	4432.69	4478.83	46.14	1.04	142.99	144.48	1.49
	Chhattisgarh	430.20	413.77	-16.43	-3.82	13.88	13.35	-0.53
	Goa	260.38	246.46	-13.92	-5.35	8.40	7.95	-0.45
	D&D	193.54	168.06	-25.48	-13.17	6.24	5.42	-0.82
	D&NH	416.74	425.78	9.04	2.17	13.44	13.73	0.29
ESIL	228.31	220.93	-7.38	-3.23	7.36	7.13	-0.24	
SR	AP TRANSCO	877.58	885.38	7.80	0.89	28.31	28.56	0.25
	TG TRANSCO	1984.74	2088.58	103.84	5.23	64.02	67.37	3.35
	KPTCL	404.45	454.70	50.25	12.42	13.05	14.67	1.62
	KSEB	842.42	907.12	64.70	7.68	27.17	29.26	2.09
	TNEB	1943.58	1982.43	38.85	2.00	62.70	63.95	1.25
	PONDICHERRY	182.49	186.79	4.30	2.36	5.89	6.03	0.14
ER	Bihar	1561.32	1525	-36.04	-2.31	50.37	49.20	-1.16
	JSEB	387.83	388	0.50	0.13	12.51	12.53	0.02
	DVC	-471.73	-459	12.70	-2.69	-15.22	-14.81	0.41
	GRIDCO	493.69	520	26.44	5.36	15.93	16.78	0.85
	WBSEB	1004.77	1049	44.00	4.38	32.41	33.83	1.42
	Sikkim	39.34	30	-9.65	-24.54	1.27	0.96	-0.31
NER	Arunachal Pradesh	49.25	59.54	10.29	20.89	1.59	1.92	0.33
	Assam	453.48	468.37	14.89	3.28	14.63	15.11	0.48
	Manipur	65.20	68.99	3.79	5.81	2.10	2.23	0.12
	MeSEB	46.71	45.35	-1.36	-2.90	1.51	1.46	-0.04
	Mizoram	32.63	37.91	5.28	16.18	1.05	1.22	0.17
	Nagaland	43.53	48.32	4.79	11.01	1.40	1.56	0.15
	Tripura	42.60	44.83	2.23	5.24	1.37	1.45	0.07

12. INTER REGIONAL EXCHANGES 2014-15

	April'14	May'14	June'14	July'14	Aug'14	Sep'14	Oct'14	Fin. Year 2014-15 Till October 2014
Name of Line								
Import of NR from WR (WR-NR)								
WR - NR 765 kV Gwalior - Agra D/C	1131.41	1094.02	1169.37	1136.35	1056.36	961.21	931.72	7480.44
WR - NR HVDC Vindhyachal	226.93	146.02	220.87	76.68	102.45	87.66	42.38	902.99
WR - NR 400 kV Zerda Kankroli	0.00	0.00	0.00	1.12	0.35	0.00	0.00	1.47
WR - NR 400 kV Zerda Bhinmal	0.00	0.00	0.11	0.11	4.56	0.00	0.00	4.78
WR - NR 220 kV Badod - Kota/ Modak	0.00	0.00	5.46	3.26	6.72	3.34	1.34	20.12
WR - NR 220 kV Auraiya - Malanpur/Mehgaon	0.00	0.00	2.26	0.00	0.00	2.36	0.00	4.61
WR - NR HVDC Mundra - Mohindergarh	1435.93	1407.11	1420.90	1508.24	1425.60	1113.54	241.32	8552.64
Total WR - NR	2794.27	2647.15	2818.96	2725.76	2877.20	2168.12	1319.67	17351.13
Import of NR from ER (ER-NR)								
ER - NR 765 kV Sasaram - Fatehpur	15.63	29.42	61.54	63.42	127.24	60.30	145.50	503.05
ER - WR 765 kV Gaya - Fatehpur	0.00	5.45	7.52	10.10	47.03	119.40	132.67	322.17
ER - WR 400 kV Pusauli - Balia	1.80	0.00	2.18	1.89	10.35	4.91	0.00	21.13
ER-NR 400 kV Patna - Balia 2xD/C	199.41	188.18	196.33	216.02	228.67	174.58	306.75	1509.93
ER - NR 400 kV Muzaffarpur - Gorakhpur D/C	60.87	153.36	338.00	356.61	407.36	323.35	309.24	1948.79
ER - NR 400 kV Biharshariff - Balia D/C	73.20	134.72	234.73	161.92	210.72	162.99	169.34	1147.61
ER - NR HVDC Sasaram (Bypass)	214.12	275.04	232.52	300.59	130.61	206.35	247.26	1606.49
ER - NR 220 kV Pusauli - Sahupuri	112.59	109.26	117.30	106.27	99.97	95.07	108.72	749.17
ER - NR 132 kV Sahupuri - Karamnasa	0.00	0.00	0.00	0.00	6.72	15.36	0.96	23.04
ER - NR 132 kV Rihand - Son Nagar	0.00	0.00	0.00	0.00	0.00	-0.54	0.00	-0.54
Total NR - ER	677.62	895.41	1190.11	1216.83	1268.66	1268.66	1268.66	7785.95
Export of NR to WR (NR-WR)								
NR - WR 765 kV Gwalior - Agra D/C	0.00	0.00	0.00	0.00	0.00	0.00	0.00	0.00
NR - WR HVDC Vindhyachal	7.75	36.56	10.16	68.79	110.02	105.84	172.27	511.39
NR - WR 400 kV Zerda Kankroli	180.30	135.80	123.34	131.77	112.67	101.46	145.09	930.42
NR - WR 400 kV Zerda Bhinmal	133.65	98.67	104.05	114.09	93.08	92.64	97.44	733.62
NR - WR 220 kV Badod - Kota/ Modak	88.03	68.11	90.43	54.24	69.10	31.14	93.79	494.85
NR - WR 220 kV Auraiya - Malanpur/Mehgaon	26.51	28.54	26.76	37.59	50.65	47.78	68.24	286.06
NR - WR HVDC Mundra - Mohindergarh	0.00	0.00	0.00	0.00	0.00	0.00	0.00	0.00
Total NR - WR	436.24	367.68	354.74	406.49	435.52	378.86	576.82	2956.34
Export of NR to ER (NR-ER)								
NR - ER 765 kV Sasaram - Fatehpur	39.73	10.26	1.31	1.06	0.79	0.90	0.00	54.05
NR - ER 765 kV Gaya - Fatehpur	50.11	22.91	1.64	3.28	2.64	4.07	0.00	84.65
NR - ER 400 kV Pusauli - Balia	66.02	53.18	20.67	43.56	13.45	39.91	41.91	278.71
NR - ER 400 kV Patna - Balia 2xD/C	0.00	0.00	0.65	0.00	0.00	0.00	0.00	0.65
NR - ER 400 kV Muzaffarpur - Gorakhpur D/C	5.12	1.26	0.00	0.00	0.00	5.63	0.00	12.01
NR - ER 400 kV Biharshariff - Balia D/C	2.38	0.00	0.00	0.00	0.00	0.00	0.00	2.38
NR - ER HVDC Sasaram (Bypass)	25.06	0.70	1.72	0.00	47.93	7.07	5.78	88.27
NR - ER 220 kV Pusauli - Sahupuri	0.00	0.03	0.00	3.28	3.72	0.00	0.00	7.03
NR - ER 132 kV Sahupuri - Karamnasa	0.00	0.94	0.00	-0.50	0.48	2.19	7.88	10.99
NR - ER 132 kV Rihand - Son Nagar	12.54	7.36	3.28	6.11	19.90	23.09	22.81	95.08
Total NR - ER	200.97	96.65	29.27	56.78	88.91	82.84	78.38	633.80

12. INTER REGIONAL EXCHANGES 2014-15

	April'14	May'14	June'14	July'14	Aug'14	Sep'14	Oct'14	Fin. Year 2014-15 Till October 2014
Name of Line								
Export of WR to ER (WR-ER)								
WR - ER 765 kV Ranchi - Dharamjaygarh	4.29	72.09	2.90	-84.11	-112.10	-94.49	-39.32	-250.75
WR - ER 400 kV Sipat - Ranchi D/C	5.57	97.73	44.48	-64.65	-69.00	-77.39	-17.12	-80.39
WR - ER 400 kV Raigarh - Sterlite D/C	0.00	0.00	0.37	-79.86	-55.03	-58.80	-17.77	-211.09
WR - ER 400 kV Raigarh - Jharsuguda D/C	2.20	78.59	45.11	-134.56	-59.72	-70.43	-37.98	-176.78
WR - ER 220 kV Korba - Budhipadar D/C	0.19	10.23	8.18	-4.97	-19.97	-36.32	-4.98	-47.64
WR - ER 220 kV Raigarh - Budhipadar	0.00	0.49	0.08	-0.80	-6.35	-15.72	-0.19	-22.49
Total WR - ER	7.95	259.13	141.09	-368.94	-322.17	-353.15	-117.37	-753.46
Import of WR from ER (ER - WR)								
ER - WR 765 kV Ranchi - Dharamjaygarh	0.00	0.73	5.28	6.08	4.84	1.84	22.71	41.49
ER - WR 400 kV Sipat - Ranchi D/C	2.42	0.00	2.53	3.75	5.35	2.95	31.44	48.44
ER - WR 400 kV Raigarh - Sterlite D/C	115.86	115.02	172.47	118.86	129.37	147.84	235.79	1035.21
ER - WR 400 kV Raigarh - Jharsuguda D/C	0.00	0.00	13.84	2.72	3.53	3.31	13.38	36.78
ER - WR 220 kV Korba - Budhipadar D/C	4.66	9.39	12.19	33.53	11.44	4.15	32.28	107.65
ER - WR 220 kV Raigarh - Budhipadar	70.98	63.40	64.54	34.75	33.26	31.17	76.47	374.58
Total ER - WR	193.92	188.55	270.86	199.69	187.79	191.26	412.07	1644.14
Export of ER to NER								
ER - NER 400 kV Binaguri - Bongaigaon D/C	231.89	201.50	128.44	48.77	16.46	7.67	69.79	704.53
ER - NER 220 kV Birpara - Salakati D/C	41.64	59.03	63.64	25.26	37.33	27.02	44.48	298.40
Total ER - NER	273.52	260.53	192.08	74.03	53.80	34.69	114.27	1002.93
Import of ER from NER (NER - ER)								
NER - ER 400 kV Binaguri - Bongaigaon D/C	0.00	0.00	6.92	-34.70	-87.32	-114.52	-15.20	-244.82
NER - ER 220 kV Birpara - Salakati D/C	0.00	0.00	0.00	-0.46	-2.02	-8.20	-0.03	-10.71
Total NER - ER	0.00	0.00	6.92	-35.16	-89.34	-122.73	-15.23	-255.54
Export of ER to SR (ER - SR)	0.00							
ER - SR HVDC Gazuwaka	534.56	526.50	394.52	488.09	480.65	428.23	182.83	3035.39
ER - SR HVDC Talchar - Kolar	1419.85	1299.16	1345.00	1431.12	199.57	1344.73	1454.94	8494.37
Total ER - SR	1954.41	1825.70	1739.53	1919.21	680.22	1772.96	1637.77	11529.80
Import of ER from SR (SR - ER)								
SR - ER HVDC Gazuwaka	0.00	0.00	0.00	0.00	0.00	0.00	0.00	0.00
SR - ER HVDC Talchar - Kolar	0.00	0.00	0.00	0.00	0.00	0.00	0.00	0.00
Total SR - ER	0.00	0.00	0.00	0.00	0.00	0.00	0.00	0.00
Export of WR to SR (WR-SR)								
WR - SR HVDC Bhadravati	691.96	692.54	675.04	727.00	9.81	701.99	732.95	4231.29
WR - SR 765 kV Sholapur - Raichur	78.84	68.83	79.31	118.00	7.80	218.95	225.86	797.58
Total WR - SR	770.80	761.36	754.35	845.00	17.61	920.94	958.81	5028.87
Import of WR from SR (SR - WR)								
SR - WR HVDC Bhadravati	0.00	0.00	0.00	0.00	0.00	0.00	0.00	0.00
SR - WR 765 kV Raichur - Sholapur	35.99	47.17	50.50	51.39	0.56	-28.88	-30.80	125.93
Total SR - WR	35.99	47.17	50.50	51.39	0.56	-28.88	-28.88	127.84
TOTAL ALL INDIA	7346	7349	7548	7091	5199	6314	6205	47052

Date	12.1 Import of NR from WR & ER during October 2014																			
	Import of NR from WR (WR-NR)									Import of NR from ER (ER-NR)										
	WR - NR 765 kV Gwalior - Agra D/C	WR - NR HVDC V'chal	WR - NR 400 kV Zerda- Kankroli	WR - NR 400 kV Zerda- Bhinmal	WR - NR 220 kV Badod - Kota / Modak	WR - NR 220 kV Auraiya - Malanpur / Mehgaon	WR-NR 400 KV Rihand Vindhychal	WR - NR HVDC Mundra - M'garh	Total WR - NR	ER - NR 765 kV Sasaram - Fatehpur	ER - WR 765 kV Gaya - Fatehpur	ER - WR 400 kV Pusauli - Balua	ER-NR 400 kV Patna - Balua 2xD/C	ER - NR 400 kV Muzaffarpur - G'pur D/C	ER - NR 400 kV B'shariff - Balua D/C	ER - NR HVDC Sasaram (Byepass)	ER - NR 220 kV Pusauli - Sahupuri	ER - NR 132 kV Sahupuri - K'nasa	ER - NR 132 kV Rihand - Son Nagar	Total NR -WR
1-Oct-14	19.66	0.00	0.00	0.00	0.00	0.00	11.90	29.06	60.61	7.10	7.79	0.00	5.35	10.22	5.06	0.00	3.83	0.00	0.00	39.36
2-Oct-14	17.18	0.00	0.00	0.00	0.00	0.00	10.64	29.06	56.88	7.38	8.51	0.00	6.92	11.76	6.18	0.00	3.74	0.00	0.00	44.49
3-Oct-14	33.98	0.00	0.00	0.00	0.00	0.00	8.39	35.72	78.09	5.33	8.06	0.00	7.51	12.82	6.46	3.08	4.16	0.00	0.00	47.42
4-Oct-14	28.86	0.00	0.00	0.00	1.34	0.00	10.43	44.29	84.92	4.79	7.78	0.00	6.62	11.10	4.42	4.90	4.25	0.00	0.00	43.86
5-Oct-14	25.03	0.00	0.00	0.00	0.00	0.00	10.77	48.38	84.18	3.85	6.36	0.00	6.62	11.10	4.42	4.76	3.27	0.00	0.00	40.37
6-Oct-14	34.14	0.39	0.00	0.00	0.00	0.00	0.00	48.38	82.92	4.26	7.26	0.00	8.76	9.67	4.98	4.95	4.27	0.00	0.00	44.15
7-Oct-14	38.69	5.11	0.00	0.00	0.00	0.00	0.00	48.38	92.18	4.19	8.15	0.00	7.03	10.82	5.46	4.83	3.51	0.00	0.00	43.99
8-Oct-14	34.96	5.85	0.00	0.00	0.00	0.00	0.00	47.56	88.38	3.72	1.24	0.00	7.24	9.31	5.38	4.84	4.05	0.00	0.00	35.77
9-Oct-14	36.41	5.08	0.00	0.00	0.00	0.00	0.22	48.09	89.80	3.68	2.55	0.00	7.34	10.42	6.29	7.21	3.58	0.00	0.00	41.06
10-Oct-14	32.36	1.07	0.00	0.00	0.00	0.00	9.80	48.37	91.61	4.11	1.26	0.00	8.02	10.94	6.58	9.80	4.05	0.00	0.00	44.75
11-Oct-14	27.58	0.00	0.00	0.00	0.00	0.00	11.88	45.86	85.32	4.13	2.50	0.00	11.58	10.77	4.95	9.69	3.94	0.00	0.00	47.54
12-Oct-14	25.92	0.00	0.00	0.00	0.00	0.00	11.68	43.55	81.16	2.61	8.44	0.00	10.21	10.08	5.67	9.57	4.07	0.00	0.00	50.66
13-Oct-14	28.23	0.00	0.00	0.00	0.00	0.00	11.48	40.75	80.46	4.47	9.83	0.00	9.29	10.73	5.73	9.73	4.03	0.00	0.00	53.81
14-Oct-14	23.54	0.00	0.00	0.00	0.00	0.00	11.22	30.00	64.76	5.20	8.10	0.00	13.97	7.33	6.28	9.81	2.28	0.00	0.00	52.98
15-Oct-14	22.85	0.00	0.00	0.00	0.00	0.00	11.68	28.93	63.46	7.00	2.69	0.00	13.38	9.89	7.94	9.36	3.14	0.00	0.00	53.41
16-Oct-14	22.91	0.09	0.00	0.00	0.00	0.00	11.85	34.74	69.58	7.18	3.84	0.00	14.49	11.43	6.32	9.72	3.22	0.00	0.00	56.19
17-Oct-14	14.93	0.62	0.00	0.00	0.00	0.00	11.97	39.07	66.59	5.40	3.02	0.00	14.44	8.60	5.30	9.78	3.42	0.00	0.00	49.96
18-Oct-14	15.01	1.93	0.00	0.00	0.00	0.00	11.82	36.03	64.79	6.89	2.20	0.00	16.00	9.74	5.60	9.72	3.93	0.00	0.00	54.08
19-Oct-14	24.86	0.00	0.00	0.00	0.00	0.00	11.91	30.85	67.62	8.05	1.23	0.00	16.72	11.18	5.55	9.69	3.48	0.00	0.00	55.89
20-Oct-14	30.26	0.00	0.00	0.00	0.00	0.00	8.06	33.33	71.66	6.19	4.41	0.00	17.29	11.28	5.03	9.69	3.71	0.00	0.00	57.60
21-Oct-14	39.96	3.14	0.00	0.00	0.00	0.00	0.00	39.20	82.30	6.08	2.63	0.00	15.98	12.70	6.87	9.78	3.93	0.00	0.00	57.98
22-Oct-14	40.29	6.72	0.00	0.00	0.00	0.00	3.89	47.28	98.17	5.08	0.58	0.00	12.19	9.81	6.28	9.64	3.94	0.00	0.00	47.52
23-Oct-14	36.91	1.10	0.00	0.00	0.00	0.00	9.34	49.18	96.52	0.80	1.95	0.00	8.37	9.81	4.70	9.74	4.16	0.00	0.00	39.52
24-Oct-14	32.86	1.58	0.00	0.00	0.00	0.00	8.46	48.54	91.44	0.45	2.09	0.00	6.49	7.31	4.33	9.55	3.42	0.00	0.00	33.64
25-Oct-14	32.66	1.81	0.00	0.00	0.00	0.00	2.10	45.96	82.53	0.70	1.76	0.00	6.33	6.79	4.11	9.67	3.05	0.00	0.00	32.41
26-Oct-14	37.98	4.08	0.00	0.00	0.00	0.00	0.00	45.96	88.02	3.34	2.64	0.00	8.01	9.50	5.24	9.72	2.77	0.00	0.00	41.20
27-Oct-14	41.19	2.97	0.00	0.00	0.00	0.00	2.63	51.80	98.59	4.24	3.24	0.00	8.23	9.64	5.32	9.38	2.58	0.00	0.00	42.63
28-Oct-14	36.58	0.00	0.00	0.00	0.00	0.00	10.37	53.57	100.52	4.05	2.89	0.00	7.77	8.31	4.66	9.90	2.86	0.48	0.00	40.93
29-Oct-14	31.79	0.00	0.00	0.00	0.00	0.00	9.97	49.23	90.99	4.77	3.08	0.00	7.95	8.44	4.58	9.45	2.72	0.48	0.00	41.47
30-Oct-14	34.94	0.56	0.00	0.00	0.00	0.00	7.76	46.08	89.34	5.45	3.32	0.00	8.54	9.47	5.12	9.62	2.71	0.00	0.00	44.23
31-Oct-14	29.23	0.28	0.00	0.00	0.00	0.00	11.09	52.47	93.06	5.02	3.27	0.00	8.12	8.28	4.54	9.70	2.68	0.00	0.00	41.59
Total	931.72	42.38	0.00	0.00	1.34	0.00	241.32	1319.67	2536.42	145.50	132.67	0.00	306.75	309.24	169.34	247.26	108.72	0.96	0.00	1420.44

Date	12.2 Export of NR to WR & ER during October 2014																		
	Export of NR to WR (NR- WR)								Export of NR to ER (NR- ER)										
	WR - NR 765 kV Gwalior - Agra D/C	WR - NR HVDC V'chal	WR - NR 400 kV Zerda- Kankroli	WR - NR 400 kV Zerda- Bhinmal	WR - NR 220 kV Badod - Kota / Modak	WR - NR 220 kV Auraiya - Malanpur / Mehgaon	WR - NR HVDC Mundra - M'garh	Total WR - NR	ER - NR 765 kV Sasaram - Fatehpur	ER - WR 765 kV Gaya - Fatehpur	ER - WR 400 kV Pusauli - Balua	ER-NR 400 kV Patna - Balua 2xD/C	ER - NR 400 kV Muzaffarpur - G'pur D/C	ER - NR 400 kV B'shariff - Balua D/C	ER - NR HVDC Sasaram (Byepass)	ER - NR 220 kV Pusauli - Sahupuri	ER - NR 132 kV K'nasa	ER - NR 132 kV Rihand - Son Nagar	Total NR -WR
1-Oct-14	0.00	12.13	5.32	4.60	2.36	3.20	0.00	27.61	0.00	0.00	0.77	0.00	0.00	0.00	2.42	0.00	0.78	0.77	4.73
2-Oct-14	0.00	12.11	5.67	4.79	2.13	3.17	0.00	27.87	0.00	0.00	0.31	0.00	0.00	2.47	0.00	0.67	0.92	4.36	
3-Oct-14	0.00	12.11	1.58	1.27	0.53	2.04	0.00	17.53	0.00	0.00	0.57	0.00	0.00	0.89	0.00	0.72	0.80	2.98	
4-Oct-14	0.00	12.11	3.25	2.63	0.00	2.33	0.00	20.31	0.00	0.00	0.98	0.00	0.00	0.00	0.00	0.76	0.70	2.44	
5-Oct-14	0.00	12.11	4.68	2.63	2.45	2.76	0.00	24.62	0.00	0.00	0.98	0.00	0.00	0.00	0.00	0.79	0.90	2.67	
6-Oct-14	0.00	3.87	4.25	2.85	1.13	0.80	0.00	12.89	0.00	0.00	1.17	0.00	0.00	0.00	0.00	-0.78	-0.93	-0.54	
7-Oct-14	0.00	0.00	4.45	3.16	3.02	0.64	0.00	11.27	0.00	0.00	1.01	0.00	0.00	0.00	0.00	0.57	0.94	2.52	
8-Oct-14	0.00	2.42	5.62	3.92	1.04	0.67	0.00	13.67	0.00	0.00	1.38	0.00	0.00	0.00	0.00	0.83	0.88	3.10	
9-Oct-14	0.00	0.71	5.19	3.01	1.47	0.67	0.00	11.06	0.00	0.00	1.34	0.00	0.00	0.00	0.00	0.00	0.86	2.20	
10-Oct-14	0.00	4.22	4.53	2.78	1.25	1.87	0.00	14.64	0.00	0.00	1.88	0.00	0.00	0.00	0.00	0.00	0.79	2.67	
11-Oct-14	0.00	7.32	4.12	2.38	1.90	2.33	0.00	18.05	0.00	0.00	1.88	0.00	0.00	0.00	0.00	0.00	0.75	2.63	
12-Oct-14	0.00	7.43	4.74	2.78	4.50	2.63	0.00	22.07	0.00	0.00	1.70	0.00	0.00	0.00	0.00	0.00	0.67	2.37	
13-Oct-14	0.00	7.39	7.29	5.77	4.31	2.25	0.00	27.01	0.00	0.00	1.39	0.00	0.00	0.00	0.00	0.53	0.67	2.59	
14-Oct-14	0.00	8.58	8.13	7.15	4.89	2.83	0.00	31.57	0.00	0.00	1.53	0.00	0.00	0.00	0.00	0.36	0.53	2.42	
15-Oct-14	0.00	7.05	6.73	5.17	4.49	2.71	0.00	26.14	0.00	0.00	1.28	0.00	0.00	0.00	0.00	0.62	0.79	2.69	
16-Oct-14	0.00	6.70	6.15	4.40	3.78	2.77	0.00	23.80	0.00	0.00	2.40	0.00	0.00	0.00	0.00	0.64	0.83	3.87	
17-Oct-14	0.00	1.20	6.46	4.45	3.78	1.42	0.00	17.31	0.00	0.00	2.38	0.00	0.00	0.00	0.00	0.63	0.89	3.90	
18-Oct-14	0.00	1.66	4.92	2.92	5.07	1.24	0.00	15.80	0.00	0.00	-1.85	0.00	0.00	0.00	0.00	-0.67	-0.89	-3.41	
19-Oct-14	0.00	9.68	4.50	2.70	4.42	2.69	0.00	23.98	0.00	0.00	1.96	0.00	0.00	0.00	0.00	0.71	0.93	3.60	
20-Oct-14	0.00	11.82	4.93	3.29	4.34	2.39	0.00	26.77	0.00	0.00	1.77	0.00	0.00	0.00	0.00	0.73	0.94	3.43	
21-Oct-14	0.00	2.17	3.47	1.95	3.14	1.75	0.00	12.48	0.00	0.00	1.44	0.00	0.00	0.00	0.00	0.00	0.87	2.31	
22-Oct-14	0.00	1.49	3.11	1.39	3.17	1.81	0.00	10.97	0.00	0.00	1.48	0.00	0.00	0.00	0.00	0.00	0.89	2.37	
23-Oct-14	0.00	5.15	3.11	1.39	0.00	-1.75	0.00	7.90	0.00	0.00	1.95	0.00	0.00	0.00	0.00	0.00	0.92	2.87	
24-Oct-14	0.00	4.00	4.87	2.92	7.15	1.82	0.00	20.76	0.00	0.00	1.23	0.00	0.00	0.00	0.00	0.00	0.88	2.11	
25-Oct-14	0.00	0.00	3.97	2.21	5.22	2.13	0.00	13.53	0.00	0.00	1.43	0.00	0.00	0.00	0.00	0.00	0.93	2.37	
26-Oct-14	0.00	0.00	3.84	2.25	4.55	3.68	0.00	14.32	0.00	0.00	1.41	0.00	0.00	0.00	0.00	0.00	0.94	2.35	
27-Oct-14	0.00	1.97	4.44	2.74	4.76	5.84	0.00	19.74	0.00	0.00	1.42	0.00	0.00	0.00	0.00	0.00	0.95	2.37	
28-Oct-14	0.00	9.36	5.11	3.85	5.34	4.82	0.00	28.48	0.00	0.00	1.58	0.00	0.00	0.00	0.00	0.00	0.95	2.53	
29-Oct-14	0.00	3.05	4.39	2.99	-5.15	2.21	0.00	7.49	0.00	0.00	1.79	0.00	0.00	0.00	0.00	0.00	0.92	2.71	
30-Oct-14	0.00	2.23	3.07	1.58	3.95	2.09	0.00	12.93	0.00	0.00	1.60	0.00	0.00	0.00	0.00	0.00	0.92	2.51	
31-Oct-14	0.00	2.25	3.20	1.55	4.81	2.44	0.00	14.24	0.00	0.00	1.78	0.00	0.00	0.00	0.00	0.00	0.91	2.68	
Total	0.00	172.27	145.09	97.44	93.79	68.24	0.00	576.82	0.00	0.00	41.91	0.00	0.00	5.78	0.00	7.88	22.81	78.38	

Date	12.3 Import - Export of ER with WR & NER during October 2014																			
	Export of WR to ER (WR-ER)							Import of WR from ER (ER - WR)							Export of ER to NER (ER - NER)			Import of ER from NER (NER - ER)		
	WR - ER 765 kV Dharamjyag arh - Ranchi D/C	WR - ER 400 kV Sipat - Ranchi D/C	WR - ER 400 kV Raigarh - Sterlite D/C	WR - ER 400 kV Raigarh - Jharsugud a D/C	WR - ER 220 kV Korba - Budhipad ar D/C	WR - ER 220 kV Raigarh - Budhipad ar	Total WR - ER	WR - ER 765 kV Dharamjyag arh - Ranchi D/C	ER - WR 400 kV Sipat - Ranchi D/C	ER - WR 400 kV Raigarh - Sterlite D/C	ER - WR 400 kV Raigarh - Jharsugud a D/C	ER - WR 220 kV Korba - Budhipada r D/C	ER - WR 220 kV Raigarh - Budhipada r	Total ER - WR	ER - NER 400 kV Binaguri - Bongaigaon D/C	ER - NER 220 kV Birpara - Salakati D/C	Total ER - NER	NER - ER 400 kV Binaguri - Bongaigao n D/C	NER - ER 220 kV Birpara - Salakati D/C	Total NER - ER
1-Oct-14	-0.54	-0.15	-0.31	-0.46	-0.07	0.00	-1.53	0.8	1.2	6.7	0.38	0.49	1.33	10.92	0.31	0.66	0.97	-3.37	-0.03	-3.41
2-Oct-14	-0.17	-0.01	-0.10	-0.15	-0.02	0.00	-0.45	1.9	2.4	7.6	1.32	0.71	1.58	15.60	0.33	0.91	1.24	-2.94	0.00	-2.94
3-Oct-14	-1.23	-0.46	-1.39	-2.95	-0.02	0.00	-6.04	0.2	0.8	6.7	0.00	0.54	1.44	9.74	0.32	0.90	1.22	-2.71	0.00	-2.71
4-Oct-14	-1.48	-0.47	-1.18	-2.28	-0.02	0.00	-5.42	0.5	1.0	7.3	0.05	0.38	1.42	10.69	0.21	0.99	1.20	-2.15	0.00	-2.15
5-Oct-14	-1.07	-0.17	-1.02	-1.76	-1.43	-0.01	-5.47	0.3	0.9	7.8	0.00	0.00	0.39	9.30	0.68	1.26	1.93	-1.46	0.00	-1.46
6-Oct-14	-1.23	-0.28	-1.20	-2.72	-0.46	0.00	-5.89	0.2	0.7	7.9	0.00	0.12	1.23	10.12	0.66	1.27	1.93	-0.86	0.00	-0.86
7-Oct-14	-1.00	-0.27	-0.55	-1.77	0.00	0.00	-3.59	0.4	1.0	8.8	0.06	1.62	3.24	15.13	0.46	1.25	1.71	-0.78	0.00	-0.78
8-Oct-14	-1.93	-1.01	-1.04	-2.08	0.00	0.00	-6.06	0.4	0.6	8.1	0.00	1.35	3.30	13.82	0.76	1.36	2.13	-0.32	0.00	-0.32
9-Oct-14	-2.70	-1.43	-1.25	-1.59	0.00	0.00	-6.97	0.0	0.1	8.4	0.00	1.34	3.29	13.11	0.63	1.31	1.94	-0.15	0.00	-0.15
10-Oct-14	-1.55	-0.62	-0.50	-1.49	0.00	0.00	-4.15	0.2	0.5	9.4	0.01	1.75	3.36	15.25	1.25	1.39	2.64	-0.01	0.00	-0.01
11-Oct-14	-2.18	-0.95	-0.94	-2.42	0.00	0.00	-6.49	0.2	0.4	8.7	0.00	1.85	3.28	14.36	1.35	1.39	2.74	-0.03	0.00	-0.03
12-Oct-14	-1.30	-0.49	-0.33	-1.10	0.00	0.00	-3.22	1.0	1.0	7.5	0.73	1.69	3.16	15.08	1.23	1.29	2.52	-0.12	0.00	-0.12
13-Oct-14	-0.45	-0.12	-0.18	-0.94	0.00	0.00	-1.69	0.3	0.8	9.6	0.12	2.36	3.35	16.58	1.93	1.52	3.45	0.00	0.00	0.00
14-Oct-14	-0.24	-0.15	-0.31	-1.89	0.00	0.00	-2.60	0.2	1.2	8.3	0.00	1.50	3.09	14.21	2.01	1.44	3.45	-0.01	0.00	-0.01
15-Oct-14	-0.34	-0.07	-0.17	-0.76	-0.54	-0.01	-1.89	1.0	1.2	9.0	0.27	0.72	1.77	13.89	1.41	1.59	3.00	-0.02	0.00	-0.02
16-Oct-14	-0.55	-0.14	-0.17	-0.42	-1.18	-0.17	-2.63	1.5	1.7	10.7	0.71	0.00	0.25	14.89	1.41	1.51	2.91	-0.08	0.00	-0.08
17-Oct-14	-0.25	-0.01	-0.05	-0.24	-0.27	0.00	-0.82	1.3	1.5	10.4	1.14	0.53	1.75	16.64	6.58	2.80	9.38	0.00	0.00	0.00
18-Oct-14	-0.02	0.00	-0.04	-0.06	-0.57	0.00	-0.70	3.5	3.0	11.5	2.49	0.21	0.99	21.67	6.40	2.76	9.16	0.00	0.00	0.00
19-Oct-14	-0.01	0.00	-0.01	-0.30	0.00	0.00	-0.31	2.9	2.4	9.7	0.25	1.72	3.43	20.41	5.22	2.51	7.72	0.00	0.00	0.00
20-Oct-14	-0.23	-0.03	-0.14	-0.42	0.00	0.00	-0.82	1.2	1.9	9.5	0.19	1.75	3.68	18.22	5.81	2.67	8.47	0.00	0.00	0.00
21-Oct-14	-0.86	-0.06	-0.13	-0.44	0.00	0.00	-1.50	0.6	1.4	9.2	0.30	1.72	3.22	16.45	4.87	2.06	6.93	0.00	0.00	0.00
22-Oct-14	-1.21	-0.19	-0.06	-0.22	0.00	0.00	-1.68	0.1	0.6	8.6	0.38	1.73	2.95	14.34	3.77	1.47	5.24	0.00	0.00	0.00
23-Oct-14	-3.27	-1.67	-0.68	-1.13	0.00	0.00	-6.76	0.0	0.1	6.6	0.33	1.00	2.97	11.01	3.90	1.56	5.46	0.00	0.00	0.00
24-Oct-14	-4.30	-2.61	-2.09	-3.46	-0.05	0.00	-12.51	0.0	0.0	6.3	0.00	0.94	3.03	10.30	2.46	1.30	3.76	0.00	0.00	0.00
25-Oct-14	-3.63	-2.19	-1.93	-2.76	-0.12	0.00	-10.64	0.0	0.0	1.9	0.00	0.63	1.93	4.52	2.15	1.18	3.33	-0.01	0.00	-0.01
26-Oct-14	-2.23	-1.26	-0.97	-1.92	-0.12	0.00	-6.49	0.1	0.2	2.6	0.00	0.29	1.97	5.24	2.11	1.21	3.32	0.00	0.00	0.00
27-Oct-14	-1.53	-0.72	-0.45	-0.94	-0.01	0.00	-3.64	0.2	0.4	3.7	0.12	1.21	2.70	8.31	1.54	0.93	2.48	-0.14	0.00	-0.14
28-Oct-14	-1.19	-0.68	-0.28	-0.58	-0.10	0.00	-2.83	0.5	0.6	5.0	0.49	0.48	2.61	9.61	2.86	1.16	4.03	0.00	0.00	0.00
29-Oct-14	-1.21	-0.62	-0.18	-0.42	-0.01	0.00	-2.44	1.2	1.1	5.8	1.17	0.82	2.60	12.68	2.33	0.97	3.30	-0.01	0.00	-0.01
30-Oct-14	-0.82	-0.21	-0.10	-0.30	0.00	0.00	-1.44	0.8	1.3	6.2	0.74	1.65	3.54	14.10	2.15	0.84	2.99	-0.02	0.00	-0.02
31-Oct-14	-0.61	-0.10	0.00	0.00	0.00	0.00	-0.71	1.3	1.7	5.9	2.12	1.19	3.64	15.87	2.68	1.02	3.70	-0.02	0.00	-0.02
Total	-39.32	-17.12	-17.77	-37.98	-4.98	-0.19	-117.37	22.71	31.44	235.79	13.38	32.28	76.47	412.07	69.79	44.48	114.27	-15.20	-0.03	-15.23

Date	12.4 Import and Export of SR with ER & WR during October 2014											
	Export of ER to SR (ER - SR)			Import of ER from SR (SR - ER)			Export of WR to SR (WR-SR)			Import of WR from SR (SR - WR)		
	ER - SR HVDC Gazuwaka	ER - SR HVDC Talchar -Kolar	Total ER - SR	SR - ER HVDC Gazuwaka	SR - ER HVDC Talchar -	Total SR - ER	WR - SR HVDC Bhadrawati	WR - SR 765 kV Sholapur - Raichur	Total WR - SR	SR - WR HVDC Bhadrawati	SR - WR 765 kV Raichur - Sholapur	Total SR - WR
1-Oct-14	17.15	49.84	66.99	0.00	0.00	0.00	23.65	8.53	32.18	0.00	-0.31	-0.31
2-Oct-14	17.63	49.43	67.06	0.00	0.00	0.00	23.66	14.14	37.79	0.00	-0.02	-0.02
3-Oct-14	18.13	49.76	67.89	0.00	0.00	0.00	23.71	14.79	38.50	0.00	0.00	0.00
4-Oct-14	17.25	49.79	67.04	0.00	0.00	0.00	23.72	10.29	34.02	0.00	-0.05	-0.05
5-Oct-14	18.25	48.65	66.90	0.00	0.00	0.00	23.66	10.17	33.83	0.00	-0.01	-0.01
6-Oct-14	16.41	49.22	65.63	0.00	0.00	0.00	23.61	10.38	33.99	0.00	-0.01	-0.01
7-Oct-14	14.30	48.66	62.96	0.00	0.00	0.00	23.68	8.47	32.15	0.00	-0.16	-0.16
8-Oct-14	14.94	48.55	63.49	0.00	0.00	0.00	23.66	7.73	31.39	0.00	-0.54	-0.54
9-Oct-14	15.69	45.98	61.67	0.00	0.00	0.00	23.64	4.34	27.97	0.00	-1.22	-1.22
10-Oct-14	15.72	43.89	59.61	0.00	0.00	0.00	23.70	2.30	26.00	0.00	-2.20	-2.20
11-Oct-14	12.39	46.41	58.80	0.00	0.00	0.00	23.67	0.90	24.57	0.00	-4.57	-4.57
12-Oct-14	4.97	35.10	40.07	0.00	0.00	0.00	23.69	5.54	29.23	0.00	-2.11	-2.11
13-Oct-14	0.00	39.32	39.32	0.00	0.00	0.00	23.67	3.04	26.71	0.00	-2.77	-2.77
14-Oct-14	0.00	48.22	48.22	0.00	0.00	0.00	23.58	9.01	32.60	0.00	-0.16	-0.16
15-Oct-14	0.00	48.88	48.88	0.00	0.00	0.00	23.59	7.94	31.54	0.00	-0.16	-0.16
16-Oct-14	0.00	48.82	48.82	0.00	0.00	0.00	23.53	5.70	29.23	0.00	-0.52	-0.52
17-Oct-14	0.00	48.10	48.10	0.00	0.00	0.00	23.59	4.05	27.63	0.00	-1.07	-1.07
18-Oct-14	0.00	48.03	48.03	0.00	0.00	0.00	23.67	8.53	32.20	0.00	-0.32	-0.32
19-Oct-14	0.00	49.30	49.30	0.00	0.00	0.00	23.62	9.09	32.71	0.00	0.00	0.00
20-Oct-14	0.00	49.05	49.05	0.00	0.00	0.00	23.65	9.10	32.75	0.00	-0.06	-0.06
21-Oct-14	0.00	47.41	47.41	0.00	0.00	0.00	23.63	2.75	26.38	0.00	-2.09	-2.09
22-Oct-14	0.00	46.59	46.59	0.00	0.00	0.00	23.71	4.65	28.35	0.00	-1.87	-1.87
23-Oct-14	0.00	47.81	47.81	0.00	0.00	0.00	23.68	6.45	30.13	0.00	-2.11	-2.11
24-Oct-14	0.00	47.52	47.52	0.00	0.00	0.00	23.67	5.93	29.59	0.00	-0.40	-0.40
25-Oct-14	0.00	47.60	47.60	0.00	0.00	0.00	23.73	6.13	29.86	0.00	-0.34	-0.34
26-Oct-14	0.00	45.63	45.63	0.00	0.00	0.00	23.71	6.32	30.03	0.00	-1.59	-1.59
27-Oct-14	0.00	38.65	38.65	0.00	0.00	0.00	23.66	7.06	30.72	0.00	-1.88	-1.88
28-Oct-14	0.00	43.13	43.13	0.00	0.00	0.00	23.61	5.70	29.30	0.00	-2.01	-2.01
29-Oct-14	0.00	49.03	49.03	0.00	0.00	0.00	23.61	9.54	33.15	0.00	-1.95	-1.95
30-Oct-14	0.00	49.05	49.05	0.00	0.00	0.00	23.59	9.96	33.55	0.00	-0.20	-0.20
31-Oct-14	0.00	47.51	47.51	0.00	0.00	0.00	23.39	7.33	30.72	0.00	-0.09	-0.09
Total October'14	182.83	1454.94	1637.77	0.00	0.00	0.00	732.95	225.86	958.81	0.00	-30.80	-30.80

13. भूटान , नेपाल एवं बांग्लादेश के साथ अंतरराष्ट्रीय विद्युत विनिमय
INTERNATIONAL EXCHANGE WITH BHUTAN, NEPAL AND BANGLADESH

अप्रैल 2014 से अक्टूबर 2014 April 2014 to October 2014

अंतरराष्ट्रीय विद्युत विनिमय [भारत से दूसरे देश को आयात (+) / निर्यात (-)]
Exchange (Import=(+ve) /Export =(-ve))

Transnational

माह MONTH	भूटान BHUTAN	नेपाल NEPAL	बांग्लादेश BANGLADESH
	Energy Exchange (In MU)	Energy Exchange (In MU)	Energy Exchange (In MU)
अप्रैल 2014 APR'14	78.02	-79.85	-276.56
मई 2014 MAY'14	271.28	-76.50	-273.69
जून 2014 JUN'14	586.46	-65.04	-282.55
जुलाई 2014 JULY 14	988.60	-66.50	-290.60
अगस्त 2014 AUG 2014	1003.78	-65.26	-269.45
सितम्बर 2014 SEP 2014	979.83	-72.10	-272.36
अक्टूबर 2014 OCT 2014	607.90	-66.90	-310.50
कुल Total	4515.87	-492.15	-1975.70

**14. एसटीओए (द्विपक्षीय एवं सामूहिक) एवं डी एस एम बिलिंग का ब्योरा – माह अक्टूबर 2014
STOA (BILATERAL AND COLLECTIVE) & DSM BILLING DETAILS- October 2014**

द्विपक्षीय एसटीओए BILATERAL SHORT TERM OPEN ACCESS

अक्टूबर 2014 October 14			April'14- September'14	
क्षे.भा.प्रे.के. का नाम Name of RLDC	लेन - देनों की संख्या No. of Transactions	अनुमोदित ऊर्जा (मि.यु.) Energy Units Approved(MU)	लेन - देनों की संख्या No. of Transactions	अनुमोदित ऊर्जा (मि.यु.) Energy Approved (MU)
उ. क्षे. NR	384	899	3252	15236
प.क्षे. WR	214	822	1467	3866
द.क्षे. SR	256	838	1414	7202
पू.क्षे. ER	121	657	1099	5981
पूर्वोत्तर क्षे. NER	30	42	135	377
कुल TOTAL	1005	3257	7367	32662

एसटीओए SHORT TERM OPEN ACCESS

माह MONTH	सामूहिक एसटीओए Collective STOA		द्विपक्षीय एसटीओए Bilateral STOA	
	क्र्रेताओं / विक्रेताओं की सं. NO. of Buyers/Sellers	अनुमोदित ऊर्जा (मि.यु.) Approved Energy (MU)	क्र्रेताओं / विक्रेताओं की सं. NO. of Buyers/Sellers	अनुमोदित ऊर्जा (मि.यु.) Approved Energy (MU)
अप्रैल 2014 APR'14	2015	2143	783	3765
मई 2014 MAY'14	1962	2383	930	3872
जून 2014 JUN'14	2123	2643	1058	4719
जुलाई 2014 JUL 2014	2240	2351	1110	5556
अगस्त 2014 AUG 2014	2106	2522	1244	5589
सितम्बर 2014 Sep 2014	2550	2073	1201	4934
अक्टूबर 2014 Oct 2014	2143	2800	1005	3257
कुल TOTAL	15139	16915	7331	31693

मासिक डी एस एम बिलिंग का ब्योरा 2014-15
MONTHLY DSM BILLING DETAILS 2014-15

अनंतिम आकड़े
Provisional data
subject to change

करोड़ रु. में (RS. IN CRORES)

क्षेत्र REGION	उत्तरी क्षेत्र NORTH	पश्चिमी क्षेत्र WEST	दक्षिणी क्षेत्र SOUTH	पूर्वी क्षेत्र EAST	पूर्वोत्तर क्षेत्र NORTH EAST
29/09/2014 to 05/10/14	57.09	42.54	11.74	21.20	2.52
06/10/14 to 12/10/2014	91.72	56.78	20.09	29.88	4.09
13/10/2014 to 19/10/2014	52.34	31.59	16.42	38.49	3.08
20/10/2014 to 26/10/2014	32.64	25.21	11.02	13.84	1.56

15. पावर मार्केट की सूचना (स्रोत : आई.ई.एक्स. एवं पी.एक्स.आई.एल.)

POWER MARKET INFORMATION (Source IEX & PXIL)

पावर एक्सचेंज के माध्यम से विनिमय - माह अक्टूबर 2014

EXCHANGES

THROUGH POWER EXCHANGES - OCTOBER 2014

क्र.स. S. No.	क्षेत्रीय ईकाई Regional Entity	क्षेत्र Region	पावर एक्सचेंज के माध्यम से (मि.यु.मे) Through Power Exchange in MU	
			विक्रय Sale	क्रय Purchase
1	पंजाब Punjab	उत्तरी क्षेत्र NR	0.58	46.12
2	हरियाणा Haryana		46.93	36.25
3	राजस्थान Rajasthan		85.25	190.09
4	दिल्ली Delhi		66.01	59.31
5	उत्तर प्रदेश Uttar Pradesh		0.00	270.13
6	उत्तराखंड Uttarakhand		14.37	101.37
7	हिमाचल प्रदेश Himachal Pradesh		132.18	26.68
8	जम्मू और कश्मीर J & K		31.60	10.68
9	केंद्र शासित चंडीगढ़ UT Chandigarh		0.01	3.87
10	ए डी हाइड्रो AD Hydro		24.00	0.00
11	करचम बांगतू KW		75.56	0.00
12	श्री सीमेंट Shree Cement		64.95	0.00
13	नाथपा झाकरी Nathpa Jhakri		9.77	0.00
14	बैरासूल Baira Siul HEP(BS0)		0.00	0.00
15	चमेरा -1 Chamera-I HEP(CM1)		0.00	0.00
16	चमेरा -2 Chamera-II HEP(CM2)		0.00	0.00
17	धौलीगंगा Dhauliganga HEP(DGO)		0.00	0.00
18	धौलीगंगा Dulahasti HEP(DU0)		0.00	0.00
19	सलाल Salal HEP(SL0)		0.00	0.00
20	सेवा -2 Sewa-II NHPC(SW2)		0.00	0.00
21	टनकपुर Tanakpur HEP(TP0)		0.00	0.00
22	उरी Uri HEP(UR0)		0.00	0.00
23	लांको बुधिल LANCO Budhil		11.32	0.00
24	चमेरा-3 chamera 3		0.00	0.00
25	अदाना एचवाडासा ADANI HVDC(NDRGUA)		0.00	0.00
26	मलाना MALANA		0.00	0.00
27	उरी-II Uri-II HEP(UR2)		0.00	0.00
28	मध्य प्रदेश MP	पश्चिमी क्षेत्र WR	46.72	32.53
29	महाराष्ट्र Maharashtra		23.33	772.15
30	गुजरात Gujarat		168.35	247.06
31	छत्तीसगढ़ Chattisgarh		210.62	0.00
32	गोवा Goa		8.32	0.00
33	दमन और दीव Daman and Diu		0.00	23.82
34	दादरा और नगर हवेली Dadra & Nagar Haveli		0.00	0.00
35	जिंदल JD		173.50	0.00
36	लांको अमरकंटक LANCO AMK		0.00	0.00
37	आर्यन कोल ACB India Limited		43.21	0.00
38	जिंदल स्टील एंड पावर Jindal Steel and Power Ltd		167.60	0.00
39	बालको -2 Balco-II		0.00	9.73
40	स्टरलाइट Sterlite(w3rse0)		244.27	0.00
41	एमको EMCO		35.72	0.00
42	वन्दना विद्युत VANDANA VIDYUT		28.53	0.00
43	एस्सार पावर ESSAR POWER		1.20	0.00
44	एस्सार स्टील ESSAR STEEL		0.00	183.64
45	के एस के महानदी KSK Mahanadi		20.04	0.00
46	जिंदल स्टील -II Jindal Stg-II		165.82	0.00
47	कोरबा (प.) Korba(W) Comp. Ltd.		0.00	0.00
48	डी बी पावर D B Power		0.00	0.00
49	धारीवाल Dhariwal		0.23	0.00
50	जे पी निगी Jaypee Nigire		59.95	0.00

15. पावर मार्केट की सूचना (स्रोत : आई.ई.एक्स. एवं पी.एक्स.आई.एल.)

POWER MARKET INFORMATION (Source IEX & PXIL)

पावर एक्सचेंज के माध्यम से विनिमय - माह अक्टूबर 2014

EXCHANGES

THROUGH POWER EXCHANGES - OCTOBER 2014

क्र. स. S. No.	क्षेत्रीय ईकाई Regional Entity	क्षेत्र Region	पावर एक्सचेंज के माध्यम से (मि.यु. मे) Through Power Exchange in MU	
			विक्रय Sale	क्रय Purchase
51	आंध्र प्रदेश Andhra Pradesh	दक्षिणी क्षेत्र SR	4.98	74.14
52	कर्नाटक Karnataka		227.29	14.44
53	केरल Kerala		2.42	68.84
54	तमिलनाडु Tamilnadu		0.00	39.39
55	पोण्डिचेरी Pondicherry		0.00	0.00
56	गोवा Goa		0.00	0.00
57	लान्को कोंडापल्ली LANCO_KONDPLY		0.00	0.00
58	सिमापुरी SIMHAPURI		16.67	0.00
59	मीनाक्षी MINAXI		9.58	0.00
60	तेलंगाना TELANGANA		24.31	248.24
61	पश्चिम बंगाल West Bengal		46.54	177.17
62	उड़ीशा Odisha	166.83	0.00	
63	बिहार Bihar	0.49	122.74	
64	झारखंड Jharkhand	0.00	0.00	
65	सिक्किम Sikkim	33.39	0.00	
66	दामोदर घाटी परियोजना DVC	38.49	0.00	
67	स्टरलाइट STERLITE	0.00	0.00	
68	मैथन पावर लिमिटेड Maithon P. Ltd	पूर्वी क्षेत्र ER	75.75	0.00
69	आधुनिक पा. लिमिटेड Adhunik P.Ltd		37.75	0.00
70	चुजाचैन Chuzachen HEP		37.25	0.00
71	रंगित Rangit HEP		8.44	0.00
72	तीस्ता Teesta HEP		20.74	0.00
73	जीएमआर कमलंगा GMR Kamalanga		0.00	0.00
74	जिंदल आई पी टी एल JIPTL		0.00	0.00
75	अरुणाचल प्रदेश Arunachal Pradesh	पूर्वोत्तर क्षेत्र NER	0.99	3.27
76	असम Assam		23.27	18.28
77	मणिपुर Manipur		1.36	8.27
78	मेघालय Meghalaya		6.68	10.90
79	मिज़ोरम Mizoram		6.11	0.00
80	नागालैंड Nagaland		1.80	0.00
81	त्रिपुरा Tripura		33.51	0.72
82	अगरतला जीटीपीपी Agartala GTPP AGO		0.00	0.00
83	कोपिली KOPILI KP1		0.00	0.00
84	असम जीबीपीपी Assam GBPP_KTO		0.00	0.00
85	लोकटक LOKTAK		5.37	0.00
86	रंगानदी Ranganadi		0.00	0.00
87	दोयांग Doyang		0.00	0.00
88	पलाताना Palatana	9.85	0.00	
कुल Total			2799.79	2799.79

16. RENEWABLE ENERGY CERTIFICATE MECHANISM**MONTH:-OCTOBER 2014****RE Source & Unit wise break up (October 14)**

Sr.No	Source Wise	Accreditation		Registration	
		Capacity (MW)	Unit	Capacity (MW)	Unit
1	Wind	0	0	2.55	2
2	Urban or Municipal Waste	0	0	0	0
3	Solar Thermal	0	0	0	0
4	Solar PV	10.6	6	4.5	5
5	Small Hydro	0	0	0	0
6	Others	0	0	0	0
7	Geothermal	0	0	0	0
8	Biomass	0	0	0	0
9	Bio-fuel cogeneration	0	0	6.15	1
	Total	10.6	6	13.2	5

RECs Issued (October 14)

Sr.No.	Non Solar	Solar	Total
1	840238	87955	928193

Redemption of REC (October 14)

Sr.No.	Non Solar	Solar	Total
1	74002	379	74381

16. RENEWABLE ENERGY CERTIFICATE MECHANISM**MONTH:-OCTOBER 2014****RE Source & Unit wise break up (Apr-14- Oct14)**

Sr.No	Source Wise	Accreditation		Registration	
		Capacity (MW)	Unit	Capacity (MW)	Unit
1	Wind	116.86	11	119.01	20
2	Urban or Municipal Waste	0	0	0	0
3	Solar Thermal	0	0	0	0
4	Solar PV	94.91	57	152.8	75
5	Small Hydro	46.98	5	85.48	8
6	Others	0	0	0	0
7	Geothermal	0	0	0	0
8	Biomass	33.8	2	63.7	6
9	Bio-fuel cogeneration	70.56	10	13.13	2
	Total	363.11	85	434.12	111

RECs Issued (April14- October14)

Sr.No.	Non Solar	Solar	Total
1	5450841	338734	5789575

Redemption of REC (April 14 - October 14)

Sr.No.	Non Solar	Solar	Total
1	427205	14301	441506

16. RENEWABLE ENERGY CERTIFICATE MECHANISM

MONTH:-OCTOBER 2014

RE Source & Unit wise break up Since Inception to October 14

Sr.No	Source Wise	Accreditation		Registration	
		Capacity (MW)	Unit	Capacity (MW)	Unit
1	Wind	2447.84	618	2293.19	584
2	Urban or Municipal Waste	8	1	0	0
3	Solar Thermal	3	1	0	0
4	Solar PV	545.93	258	521.68	234
5	Small Hydro	347.49	38	288.49	31
6	Others	1.67	1	1.67	1
7	Geothermal	0	0	0	0
8	Biomass	701.16	73	697.16	73
9	Bio-fuel cogeneration	812.98	92	751.2	82
	Total	4868.07	1082	4553.39	1005

RECs Issued since Inception to October 14

Sr.No.	Non Solar	Solar	Total
1	17239993	559765	17799758

Redemption of REC since Inception to October 14

Sr.No.	Non Solar	Solar	Total
1	6700718	94994	6795712

REC Closing balance as on 31.10.2014

Sr.No.	Non Solar	Solar	Total
1	10539275	464771	11004046

Major Grid Incidences for October,2014

A	B		C	D	E	F	G	H		I
S.NO.	Outage		Region	Name of Element	Owner / Agency	Event	Generation/Load Loss	Revival		Category as per CEA Grid Standards
	Date	Time						Date	Time	
1	01-Oct-14	10:23 hrs	WR	1)400 KV BOISOR - PADGHE 2)TAPS Unit-3 3)ICT – I AT PADGHE 4)ICT – II AT PADGHE 5)ICT – III AT PADGHE 6)ICT – IV AT PADGHE 7)BUS – I AT PADGHE	MSETCL	Y-Phase CT Blast of ICT-IV at Padghe caused Bus Bar protection operation and elements given in column E tripped. Tarapur APS Unit-III tripped on undervoltage.	Load Loss=800 MW Gen Loss=540 MW	01-Oct-14	11:17 hrs	GD-1
2	01-Oct-14	10:36 hrs	ER	1)220kV FSTPP-Lalmatia 2)132 KV KHSTPP(NTPC)-Lalmatia	JSEB	Total power interrupted at 220/132 kv Lalmatia S.S	Load Loss=120 MW	01-Oct-14		GD-1
3	07-Oct-14	21:54hrs	NR	400kV Kishenpur(PG)-Dulhasli(NHPC) All runnig Unit #1, #2 & #3(130MW each) at Dulhasli HEP	PG/NHPC	Tripping of all the running unit of Dulhasli HEP due to tripping of evacuating line 400kV Kishenpur(PG)-Dulhasli(NHPC)	Gen Loss=390MW	--	--	GD-1
4	07-Oct-14	22:21hrs	NR	400kV New Wanpoh-Wagoora D/C 400kV Uri(NHPC)-Wagoora(PG) D/C 400kV Uri-II(NHPC)-Wagoora(PG) D/C 220kV Pampore(J&K)-Wagoora(PG) D/C 220kV Wagoora(PG)-Zainkot(JK) D/C 220kV Kishenpur-Mirbazar 220kV KishenpurRamban All runnig Unit #2, #3, #4 (60MW each) at Uri-II HEP All runnig Unit #1, #2, #3, #4(120MW each) at Uri-II HEP	PG/NHPC/J&K	Tripping of Uri HEP on over frequency protection operation & bus voltage at Wagoora(PG) became zero due to isolation of the load-generation complex from the grid through 220kV Mirbazar station of J&K. 400kV Kishenpur-New Wanpoh was already tripped at 21:47hrs	Gen Loss=700MW Load Loss=400MW	07-Oct-14	23:04hrs	GD-1
5	08.10.2014	07:53hrs	NR	400kV Dadri-HarshVihar D/C Unit #4(210MW) at Dadri TPS Stg-1 Both 400/220kV, 315MVA ICT #1 at HarshVihar	NTPC/DTL	Tripping of 400kV Dadri-Harsh Vihar D/C along with two ICT's at Harsh Vihar	Gen Loss=210MW Load Loss=100MW	08-Oct-14	09:47hrs	GD-1
6	09-Oct-14	13:09hrs	NR	220kV Muzaffarnagar-Shamli 400/220kV 315MVA ICT #1, #2 & #3	UP	Tripping of all three 315MVA 400/220kV ICTs at Muzaffarnagar	Load Loss=170MW	09-Oct-14	14:35hrs	GD-1
7	10-Oct-14	10:08hrs	NR	220kV Chhabra-Kawai Unit #1 & #2 at Chhabra TPS	Rajasthan	Tripping of Unit #1 & #2 at Chhabra along with 220kV Chhabra-Kawai ckt	Gen Loss=480MW Load Loss=50MW	10-Oct-14	12:44hrs	GD-1
8	18-Oct-14	0750 hrs	NR	1). Unit-3&5 of Salal HEP 2). 220kV Salal-Kishenpur ckt-1 &2 3). 220kV Salal-Jammu ckt	NHPC/PG/J&K	B-phase breaker of unit-5 stucked during opening of unit CB, it resulted into operation of LBB protection for Bus-B and all the elements connected to Bus-B tripped.	Load Loss=50MW Generation Loss= 120MW	18-Oct-14	0940 hrs	GD-1
9	14-Oct-14	2056 hrs	ER	1). 400kV Meramundali-GMR 2). 220 kV Meramandali- Bhanjanagar D/C , 3). 220 kV Meramandali- Old Duburi- D/C 4). 220 kV Meramandali- TSTPS D/C 5). 220 kV Meramandali- TTPS D/C 6). 220 kV Meramandali- Nalco D/C 7). 220 kV Meramandali- BSL D/C 8). 315MVA, 400/220kV ICT-I and II at Meramundali	OPTCL	Due to failure of Y phase PT of 220kV Meramundali Bus-I, given elements in coulum D tripped.	Load Loss=477MW	14-Oct-14	2213 hrs	GD-1

A	B		C	D	E	F	G	H		I
S.NO.	Outage		Region	Name of Element	Owner / Agency	Event	Generation/Load Loss	Revival		Category as per CEA Grid Standards
	Date	Time						Date	Time	
10	16-Oct-14	1314 hrs	WR/SR	1). 1500MVA 765/400kV ICT-I and II at Sholapur 2). 765kV Sholapur-Raichur D/C (Hand Tripped).	PG	While taking emergency S/D of ICT-II at Sholapur, ICT-I also tripped which leads to desynchronization of NEW and SR Grid.	Load Loss=Nil	16-Oct-14	1544 hrs	GI-II
11	18-Oct-14	1412 hrs	NER	1). 132kV Dimapur-Imphal 2). 132kV Loktak-Jiribam-II 3). 132kV Loktak-Ninthoukhong 3). Unit-I and III at Loktak(35X2)	PG/NHPC	132kV Loktak-Jiribam-II tripped on R-Y phase fault, due to this, given elements tripped.	Load Loss=98MW Gen Loss=53MW	18-Oct-14	1649 hrs	GD-I
12	23-Oct-14	0239 hrs	WR	1). 400kV Chandrapur-Chandrapur-II 2). 400kV Chandrapur -Parli-III 3). 400kV Chandrapur-Bhadrawati-II and IV 4). Unit II,IV and VI at Chandrapur	PG	Due to the tripping of Chandrapur Bus-II, given elements tripped	Gen Loss=600MW	23-Oct-14	0456hrs	GD-I

18. NEW ELEMENTS COMMISSIONED IN SEPTEMBER-2014								
COMMISSIONING OF NEW GENERATING UNITS								
REGION	SL. NO.	CONSTITUENT	UNIT NAME	UNIT NO	CAPACITY (MW)	DATE	TIME	
WR	1	GMR Energy	GMR Chhattisgarh	1	685 MW	02-Oct-14	05:07	
COMMISSIONING OF NEW TRANSMISSION LINES								
REGION	SL. NO.	CONSTITUENT	LINE NAME	CKT NO	KV	DATE	TIME	
ER	1	POWERGRID	Jamshedpur-Chaibasa(LILO)	I	400	30-Oct-14	18:44	
	2	POWERGRID	Chaibasa-Rourkela(LILO)	II	400	30-Oct-14	19:36	
	3	POWERGRID	Teesta-Rangpo(LILO)	I	400	28-Oct-14	18:48	
	4	POWERGRID	Teesta-Rangpo(LILO)	II	400	29-Oct-14	20:28	
	5	POWERGRID	Binaguri-Rangpo(LILO)	I	400	28-Oct-14	18:48	
	6	POWERGRID	Binaguri-Rangpo(LILO)	II	400	29-Oct-14	20:28	
SR	1	POWERGRID	Kurnool-Nellore Pooling Station	I	765	29-Oct-14	11:07	
	2	POWERGRID	Kurnool-Nellore Pooling Station	II	765	28-Oct-14	18:56	
COMMISSIONING OF NEW ICTS								
REGION	SL. NO.	CONSTITUENT	STATION NAME	KV RATIO	CAPACITY (MVA)	DATE	TIME	
ER	1	POWERGRID	JHARSUGUDA	765/400	1500	31-10-2014	19:30	
COMMISSIONING OF BUS REACTORS								
REGION	SL.NO.	CONSTITUENT	STATION NAME	KV	CAPACITY (MVAR)	DATE	TIME	
NR	1	POWERGRID	GORAKHPUR	400	80	31-Oct-14	20:32	
WR	1	BDTCL	BHOPAL	765	3x80	16-Oct-14	13:22	
COMMISSIONING OF LINE REACTORS								
REGION	SL. NO.	CONSTITUENT	STATION NAME	LINE NAME	KV	CAPACITY (MVAR)	DATE	TIME
WR	1	BDTCL	INDORE	Indore-Bhopal	765 KV	240	03-Oct-14	20:58
ER	1	POWERGRID	Jharsuguda	Angul-Jharsuguda-II	765 KV	240	31-Oct-14	22:50

19.विद्युत विभव रूपरेखा माह – अक्टूबर 2014			VOLTAGE PROFILE - October 2014					
क्र.स. Sl. No.	क्षेत्र REGION	उपकेंद्र SUBSTATION	VOLTAGE < V(lower)* (V=122,380,728 kV)	V(lower) < VOLTAGE < V(upper)*	VOLTAGE > V(upper)* (V=145, 420, 800 kV)	उच्चतम (कि.वो.) Maximum (kV)	निम्नतम (कि.वो.) Minimum (kV)	औसत (कि.वो.) Average (kV)
1	पूर्वी क्षेत्र ER	फरक्का FARAKKA	0.0%	99.5%	0.5%	421	404	414
2		कहलगांव KAHALGAON	0.0%	0.0%	100.0%	421	421	421
3		तालचर TALCHER	0.0%	100.0%	0.0%	417	403	410
4		पूणिया PURNEA	0.0%	96.7%	3.3%	427	397	412
5		मुजफ्फरपुर MUZAFFARPUR	0.0%	99.9%	0.1%	421	385	405
6		जमशेदपुर JAMSHEDPUR	0.0%	20.8%	79.2%	429	413	422
7		रंगाली RENGALI	0.0%	100.0%	0.0%	412	400	405
8		जेयपुर JEYPORE	0.2%	68.2%	31.6%	439	378	417
1	उत्तरी क्षेत्र NR	नल्लागढ़ NALLAGARH	0.8%	49.1%	50.1%	434	379	417
2		भिवाड़ी BHIWADI	0.0%	62.3%	37.7%	432	403	419
3		बल्लभगढ़ BALLABGARH	0.0%	77.1%	22.9%	430	400	415
4		इलाहाबाद ALLAHABAD	0.2%	80.0%	19.8%	431	163	416
5		हिसार HISSAR	0.0%	100.0%	0.0%	420	392	406
6		बवाना BAWANA	1.6%	87.1%	11.4%	428	377	406
7		कानपुर KANPUR	0.0%	95.8%	4.2%	425	396	412
8		बरसी BASSI	0.0%	77.4%	22.6%	430	393	414
9		लखनऊ LUCKNOW 765 kV	0.2%	99.8%	0.0%	782	723	756
10		मोगा MOGA	2.7%	88.9%	8.5%	425	379	405
11		रतनगढ़ RATANGARH	4.2%	94.0%	1.8%	423	379	394
1	पश्चिमी क्षेत्र WR	आसोज ASOJ	0.9%	95.7%	3.5%	424	380	408
2		इटारसी ITARSI	0.0%	100.0%	0.0%	420	399	405
3		जैतपुर JETPUR	0.0%	100.0%	0.0%	411	395	400
4		कासोर KASOR	0.0%	100.0%	0.0%	420	402	412
5		कोल्हापुर KOLHAPUR	0.0%	62.9%	37.1%	436	409	417
6		बीना BINA	1.1%	98.5%	0.5%	422	377	406
7		ग्वालियर GWALIOR	0.0%	100.0%	0.0%	413	392	401
8		रायपुर RAIPUR	0.0%	98.3%	1.7%	427	399	413
9		जबलपुर JABALPUR	0.0%	100.0%	0.0%	418	397	404
10		धुले DHULE	0.0%	98.8%	1.2%	423	399	408
1	दक्षिणी क्षेत्र SR	श्रीपेरुपुडूर SRIPERUMPUDUR	0.0%	93.5%	6.5%	425	397	412
2		नेवेली NEYVELI	0.0%	43.3%	56.7%	434	400	417
3		सेलम SALEM	0.0%	98.8%	1.2%	423	388	407
4		बंगलूरु BANGALORE	0.0%	99.9%	0.1%	421	382	401
5		होसूर HOSUR	0.0%	99.8%	0.2%	421	388	403
6		रामागुंडम RAMAGUNDAM	0.0%	100.0%	0.0%	420	400	410
7		विजयवाड़ा VIJAYAWADA	0.0%	60.1%	39.9%	429	407	419
8		तिरुवनंतपुरम TIRIVANDRUM	0.0%	99.8%	0.2%	421	385	407
9		हैदराबाद HYDERABAD	0.0%	96.9%	3.1%	424	395	409
1	पूर्वोत्तर क्षेत्र NER	मिसा MISA	0.0%	99.9%	0.0%	420	392	408
2		बलिपारा BALIPARA	0.0%	95.0%	4.3%	429	381	404
3		बोंगईगांव BONGAIGAON	0.0%	100.0%	0.0%	409	381	398
4		हाफ्लोंग HAFLONG 132 kV	0.0%	100.0%	0.0%	138	127	133
5		आइजोल AIZWAL 132 kV	0.0%	99.9%	0.0%	135	122	129
6		कुमारघाट KUMARGHAT 132 kV	0.0%	100.0%	0.0%	135	125	131
7		इम्फाल IMPHAL 132 kV	8.3%	91.7%	0.0%	142	119	128
8		ख्लेरियट Khlieriat_PG 132 kV	0.0%	100.0%	0.0%	137	125	133

*Percentage is calculated w.r.t. Time of one month.



POWER SYSTEM OPERATION CORPORATION LIMITED

पावर सिस्टम ऑपरेशन कारपोरेशन लिमिटेड

NATIONAL LOAD DESPATCH CENTRE - राष्ट्रीय भार प्रेषण केन्द्र

POWERGRID, B-9, Qutab Institutional Area,
Katwaria Sarai, New Delhi-110016.